

2141259-1 ✓ ACTIVE

HVA 630

TE Internal #: 2141259-1

12 V / 240 V / 48 V, 2 Position, Automotive Housing for Female Terminals, 9.4 mm [.37 in] Centerline, Black, Wire & Cable, Power, HVA 630

[View on TE.com >](#)



Automotive Parts > Automotive Connectors > Automotive Housings



Nominal Voltage Architecture: 12 V, 24 V, 42 V, 48 V, 80 V, 90 V, 125 V, 240 V, 500 V, 550 V, 600 V

Connector & Housing Type: **Housing for Female Terminals**

Number of Positions: 2

Sealable: **No**

Operating Temperature Range: -40 – 140 °C [ -40 – 284 °F ]

## Features

### Product Type Features

Mixed & Hybrid Connector	Yes
Connector Shape	Rectangular
Connector & Housing Type	Housing for Female Terminals
Sealable	No
Primary Locking Feature	Locking Lance
Connector & Contact Terminates To	Wire & Cable

### Configuration Features

Number of Positions	2
Number of Rows	1

### Electrical Characteristics

Operating Voltage	850 VDC
Nominal Voltage Architecture	12 V, 24 V, 42 V, 48 V, 80 V, 90 V, 125 V, 240 V, 500 V, 550 V, 600 V

### Body Features



Cable Exit Angle	180 °
------------------	-------

Primary Product Color	Black
-----------------------	-------

### Contact Features

Contact Size	1.2mm, 4.8mm, 6.3mm
--------------	---------------------

Contact Type	Receptacle
--------------	------------

Mating Tab Width	6.3 mm[.248 in]
------------------	-----------------

### Mechanical Attachment

Strain Relief	Without
---------------	---------

Terminal Position Assurance	Yes
-----------------------------	-----

Mating Alignment Type	Polarization
-----------------------	--------------

Mating Alignment	With
------------------	------

Connector Mounting Type	Cable Mount (Free-Hanging)
-------------------------	----------------------------

### Housing Features

Housing Material	PA 66 GF30
------------------	------------

Centerline (Pitch)	9.4 mm[.37 in]
--------------------	----------------

### Dimensions

Product Width	19.79 mm[.779 in]
---------------	-------------------

Product Length	40.5 mm[1.59 in]
----------------	------------------

Connector Height	21.28 mm[.837 in]
------------------	-------------------

### Usage Conditions

Operating Temperature Range	-40 – 140 °C[-40 – 284 °F]
-----------------------------	----------------------------

Operating Temperature (Max)	140 °C[284 °F]
-----------------------------	----------------

### Operation/Application

Circuit Application	Power
---------------------	-------

### Industry Standards

IP Rating	IP4K9K
-----------	--------

### Packaging Features

Packaging Method	Box
------------------	-----

Packaging Quantity	400
--------------------	-----

### Other

Serviceable	No
-------------	----



Connector Position Assurance Capable

No

### Product Compliance

[For compliance documentation, visit the product page on TE.com>](#)

EU RoHS Directive 2011/65/EU	Compliant
EU ELV Directive 2000/53/EC	Compliant
China RoHS 2 Directive MIIT Order No 32, 2016	有害物质含量符合标准要求 No Restricted Substance(s) Above Threshold
EU REACH Regulation (EC) No. 1907/2006	Current ECHA Candidate List: JUNE 2025 (250) Candidate List Declared Against: JUNE 2025 (250) Does not contain REACH SVHC
Halogen Content	Low Halogen - Br, Cl, F < 900 ppm per homogenous material. Also BFR/CFR/PVC Free
Solder Process Capability	Not reviewed for solder process capability

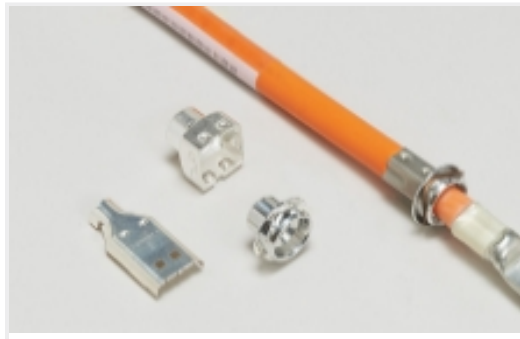
#### Product Compliance Disclaimer

This information is provided based on reasonable inquiry of our suppliers and represents our current actual knowledge based on the information they provided. This information is subject to change. The part numbers that TE has identified as EU RoHS compliant have a maximum concentration of 0.1% by weight in homogenous materials for lead, hexavalent chromium, mercury, PBB, PBDE, DBP, BBP, DEHP, DIBP, and 0.01% for cadmium, or qualify for an exemption to these limits as defined in the Annexes of Directive 2011/65/EU (RoHS2). Finished electrical and electronic equipment products will be CE marked as required by Directive 2011/65/EU. Components may not be CE marked. Additionally, the part numbers that TE has identified as EU ELV compliant have a maximum concentration of 0.1% by weight in homogenous materials for lead, hexavalent chromium, and mercury, and 0.01% for cadmium, or qualify for an exemption to these limits as defined in the Annexes of Directive 2000/53/EC (ELV). Regarding the REACH Regulation, the information TE provides on SVHC in articles for this part number is based on the latest European Chemicals Agency (ECHA) 'Guidance on requirements for substances in articles' posted at this URL: <https://echa.europa.eu/guidance-documents/guidance-on-reach>

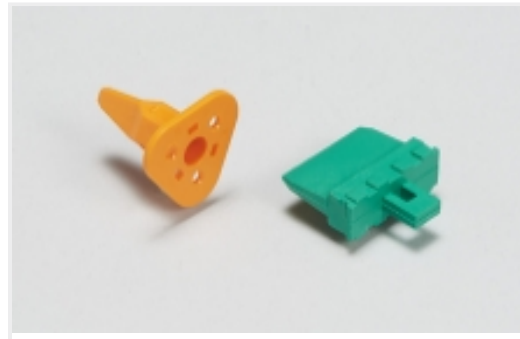
### Compatible Parts

 <p>TE Part # 1-2282291-5 2POS,HVA630,180 DEG,6 SQMM, PIGTAIL</p>	 <p>TE Part # 2141256-6 2POS,AMP MCP6.3/4.8K,REC HSG, ASSY,CODF</p>	 <p>TE Part # 2141256-1 2POS,AMP MCP6.3/4.8K,REC HSG, ASSY</p>	 <p>TE Part # 9-2141264-2 SINGLE WIRE SEAL,AMP MCP6.3/4.8K</p>
--	--	---	---

### Also in the Series | **HVA 630**



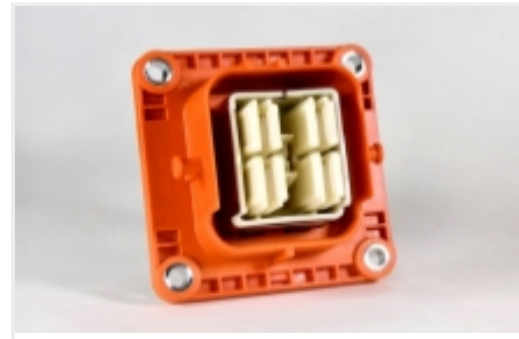
Automotive Connector EMC Shielding (2)



Automotive Connector Locks & Position Assurance(1)



Automotive E-Mobility Connector Housings(8)



Automotive E-Mobility Headers(3)



Automotive Housings(8)



Connector Seals & Cavity Plugs(3)



Electric, Hybrid & Fuel Cell Cable Assemblies(9)

## Customers Also Bought



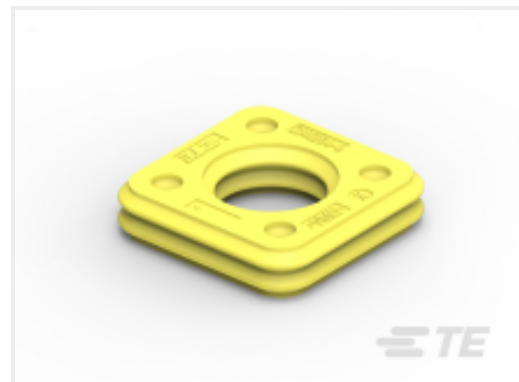
TE Part #4-2103177-5  
PLUG ASSY, KEY E, FA,CPA, HVA280-2PHI XE



TE Part #2141256-1  
2POS,AMP MCP6.3/4.8K,REC HSG, ASSY



TE Part #2141262-3  
SHIELDING,EMC



TE Part #2141264-4  
SINGLE WIRE SEAL,AMP MCP6.3/4.8K



TE Part #2141265-3  
COVER,SEAL



TE Part #2141608-4  
5POS,AMP MCP6.3/4.8K,REC HSG,A



TE Part #2141630-1  
5POS,HVA630,REC HSG ASSY, 180DEG,HVIL



TE Part #2307011-1  
CU ALLOY,FERRULE,8MM HV,90DEG, 50 SQMM



TE Part #1-2141256-1  
2POS,AMP MCP6.3/4.8K,REC HSG, COD.A,ASSY



TE Part #2141613-2  
CARRIER, SEAL,YW

## Documents



## Product Drawings

[2POS, MIXED, REC HSG, ASSY](#)

English

---

## CAD Files

[3D PDF](#)

3D

Customer View Model

[ENG\\_CVM\\_CVM\\_2141259-1\\_C.2d\\_dxf.zip](#)

English

Customer View Model

[ENG\\_CVM\\_CVM\\_2141259-1\\_C.3d\\_igs.zip](#)

English

Customer View Model

[ENG\\_CVM\\_CVM\\_2141259-1\\_C.3d\\_stp.zip](#)

English

By downloading the CAD file I accept and agree to the [Terms and Conditions](#) of use.

---

## Product Specifications

[Application Specification](#)

English