


SEARCH KEYWORD, PART NUMBER 



Part Number: 12176387

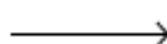
Product Name: [Metri-Pack Terminal Series](#)

2.8 M/P Female Locking Lance Sealed Terminal

 [Share](#)  [Print](#) [Contact Us About This Item](#)

This part is not currently offered in our sample program.

SEND REQUEST



Request this part be added to the sample program.

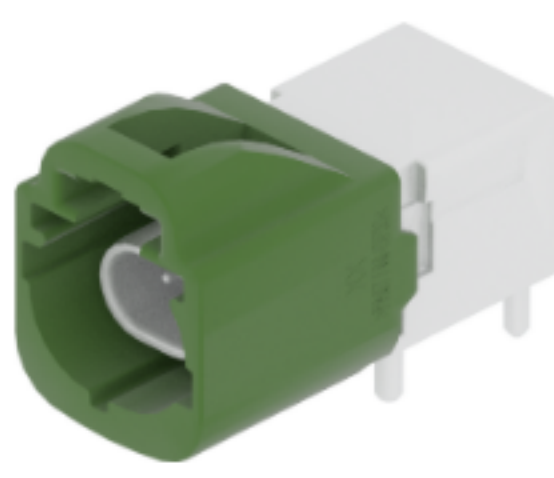


ATTRIBUTES DOCUMENTS ECAD

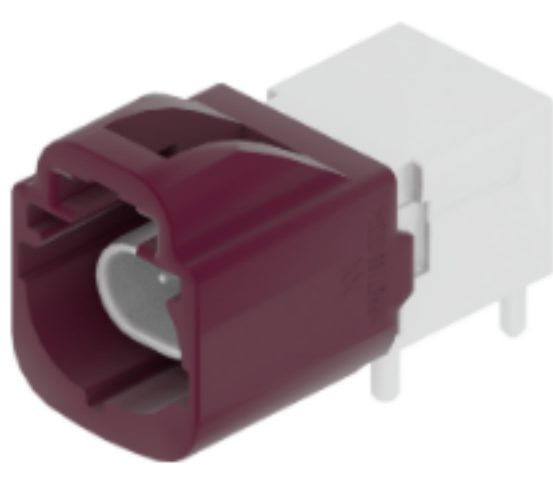
Attributes

Product Family Metri-Pack	Cable Diameter (mm) - Maximum 3.65
Product Series Terminal Series	Net Weight 1Piece (g) 0.83
Gender Female	Blade Size (mm) 2.8
Sealing Sealed	Plating AG
Cable Cross Section (mm) - Minimum 3	Locking Mechanism LOCKING LANCE
Cable Cross Section (mm) - Maximum 3	
Cable Diameter (mm) - Minimum 3.49	

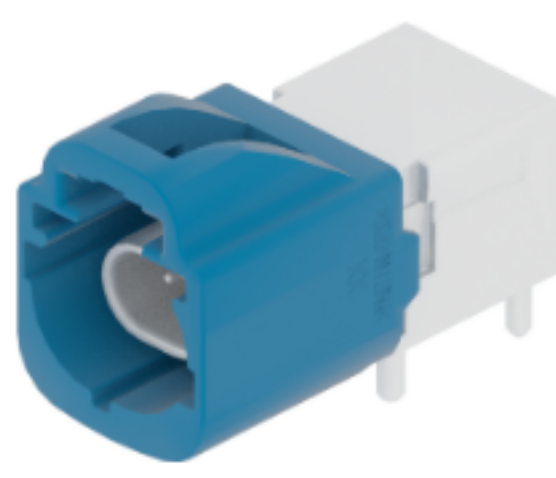
Other Products



35829171
2 Way Male 0.5 Unsealed Green



35829170
2 Way Male 0.5 Unsealed Violet

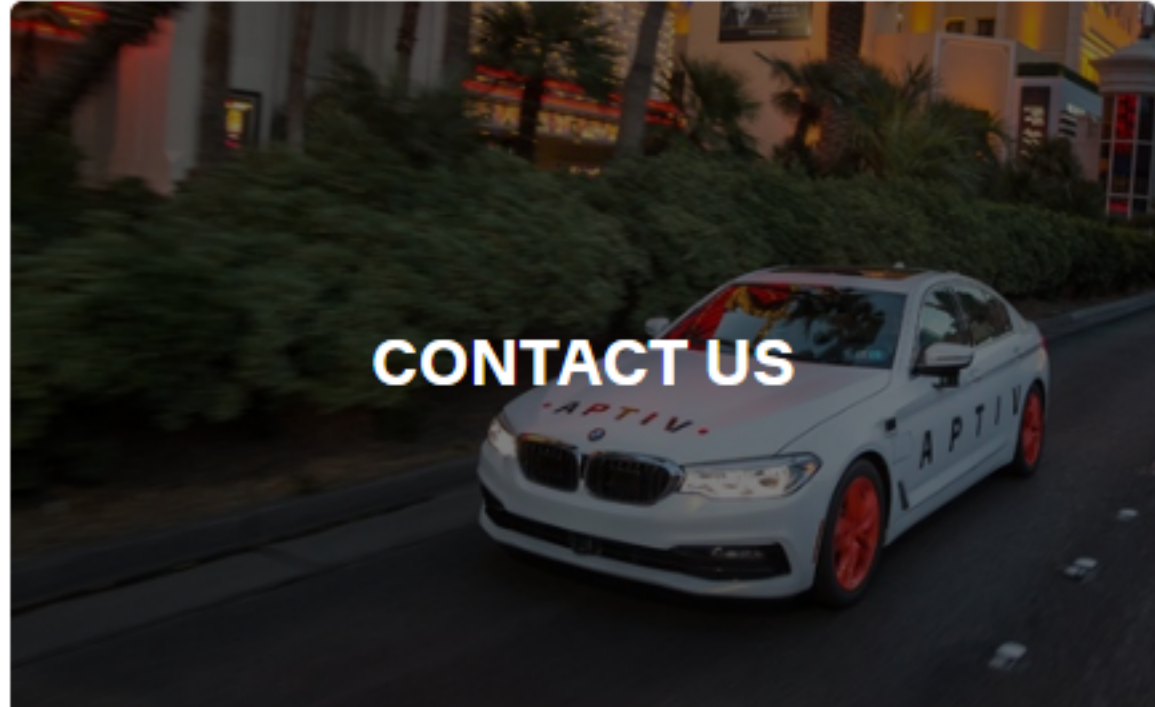


35829169
2 Way Male 0.5 Unsealed Blue

RESOURCE-CENTER-ITEM
COV CONN CLIP CDT BLACK



Next Steps



Keep pace with where mobility is going.

See what's next and get the latest updates.

SIGN UP TO GET UPDATES



Don't worry. We won't flood your inbox or share your email.

INSIGHTS

EXPLORE ALL ARTICLES
CASE STUDIES
MOBILITY INSIDER
RESEARCH PUBLICATIONS
WHITE PAPERS

SOLUTIONS

Advanced Safety
Connected Services
Connection Systems
Connectivity and Security
Electrical Distribution Systems
Middleware & DevOps
Smart Vehicle Architecture
User Experience
Vehicle Electrification Systems
HellermannTyton
Intercable Automotive Solutions
Motional
Winchester Interconnect
Wind River

CATALOG

ABOUT

Our Mission
Our Businesses
Our Locations
Our Foundation
Sustainability
Suppliers

PRIVACY

Terms of Use
Cookie Policy

LEGAL & COMPLIANCE

CAREERS

INVESTORS
NEWSROOM
CONTACT