
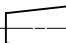
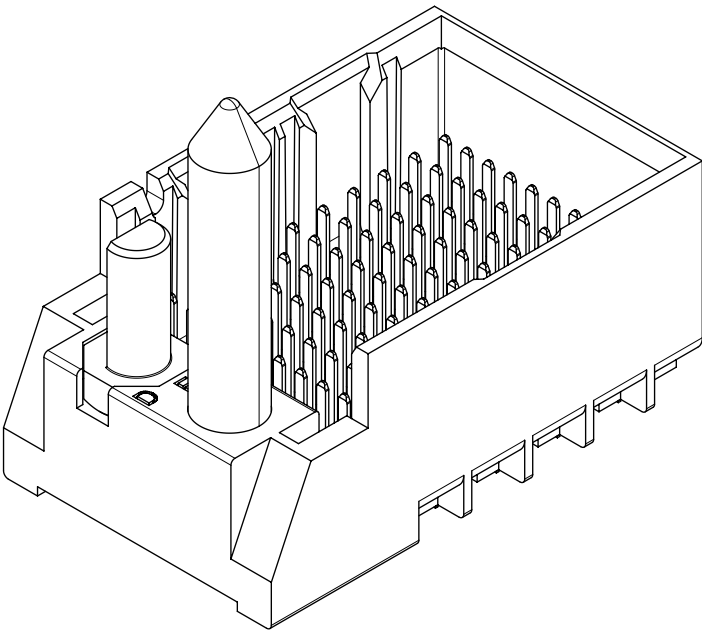


- NOTES:
1. MATERIALS: HOUSING - LIQUID CRYSTAL POLYMER (LCP)
GLASS-FILLED, UL94V-0
TERMINALS - HIGH PERFORMANCE COPPER ALLOY
 2. FINISH: 30μ MIN GOLD IN CONTACT AREA.
SELECTIVE TIN ON PCB TAILS.
NICKEL OVERALL.
 3. REFER TO MOLEX PRODUCT SPECIFICATION PS-76060-999
FOR PERFORMANCE SPECIFICATIONS AND ADDITIONAL PCB INFORMATION.
 4. THIS PART CONFORMS TO CLASS B REQUIREMENTS OF
MOLEX COSMETIC SPEC PS-45499-002.
 5. PACKAGE PER: PK-70873-758.
 6. SEE SHEETS 2 & 3 FOR PART NUMBERS AND BOARD RELATIONSHIPS.
 7. FOR GROUNDED GUIDE PINS USE DIA. 3.56 +/-0.08 (PTH)
DIA. 3.66 (DRILL) AND DIA 6.5 (PAD).
 8. MATES WITH IMPACT DC SERIES NO. 76170.
 9. KEEP OUT ZONE FOR BP HOUSING LENGTH INCLUDES AN ADDITIONAL 1.0MM
TO ACCOMMODATE FOR SPACE REQUIRED BY DC FRONT HOUSING.
 10. REFER TO MOLEX PCB ROUTING GUIDE AS-76060-990 FOR ANTIPAD AND ROUTING RECOMMENDATIONS.
 11. CONNECTORS SUPPLIED WITH A 2-56 UNC-2A SCREW.
 12. "THESE DIMENSIONS REPRESENT THE AREA NEEDED TO ACCOMMODATE CONNECTOR INSERTION AND
REPAIR ON THE PC BOARD. THIS IS REFERRED TO AS THE "CONNECTOR KEEP OUT ZONE" AND
DOES NOT REPRESENT THE ACTUAL PERIMETER OF THE CONNECTOR. WHEN LAYING OUT A PC BOARD
FOR CONNECTORS STACKED TOGETHER, USE A 1.9mm PROGRESSION."

THIS DRAWING CONTAINS INFORMATION THAT IS PROPRIETARY TO MOLEX ELECTRONIC TECHNOLOGIES, LLC AND SHOULD NOT BE USED WITHOUT WRITTEN PERMISSION																	
DIMENSION UNITS		SCALE		CURRENT REV DESC: UPDATE VIEW													
mm		NTS															
GENERAL TOLERANCES (UNLESS SPECIFIED)				<div>molex</div> <div>IMPACT BP 3 PAIR LEFT GUIDED ASSEMBLY SALES DRAWING</div>													
ANGULAR TOL ± 0.5°																	
4 PLACES		±															
3 PLACES		±															
2 PLACES		± 0.13		PRODUCT CUSTOMER DRAWING													
1 PLACE		± 0.25															
0 PLACES		±															
DRAFT WHERE APPLICABLE MUST REMAIN WITHIN DIMENSIONS				THIRD ANGLE PROJECTION		DRAWING		SERIES		DOCUMENT NUMBER		DOC TYPE		DOC PART		REVISION	
				 		D-SIZE		76165		SEE TABLE		GENERAL MARKET		SD-76165-002		PSD	

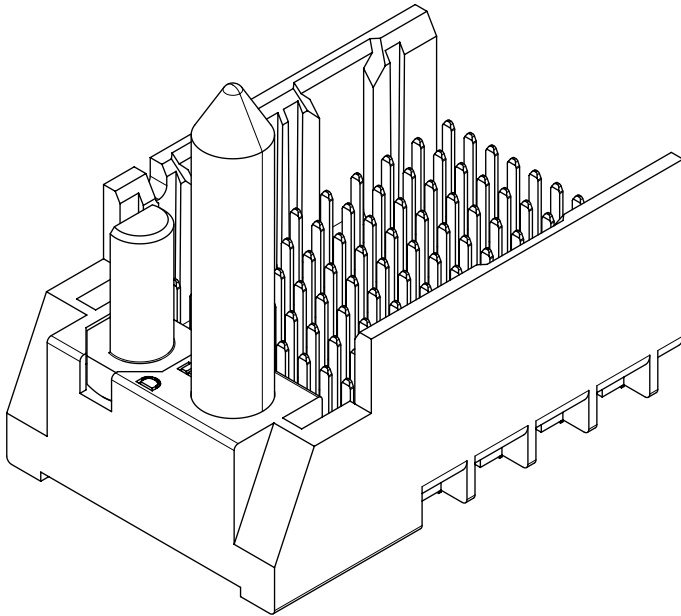
PART NUMBER CHART

MATERIAL NUMBER	# OF COLUMNS	# OF DIFF PAIR	DIM "A"	DIM "B"	GUIDE LEFT END WALL OPTION
76165-*3**	6	18	19.3	9.50	
76165-*8**	8	24	23.1	13.30	
76165-*1**	10	30	26.9	17.10	
76165-*6**	16	48	38.3	28.50	



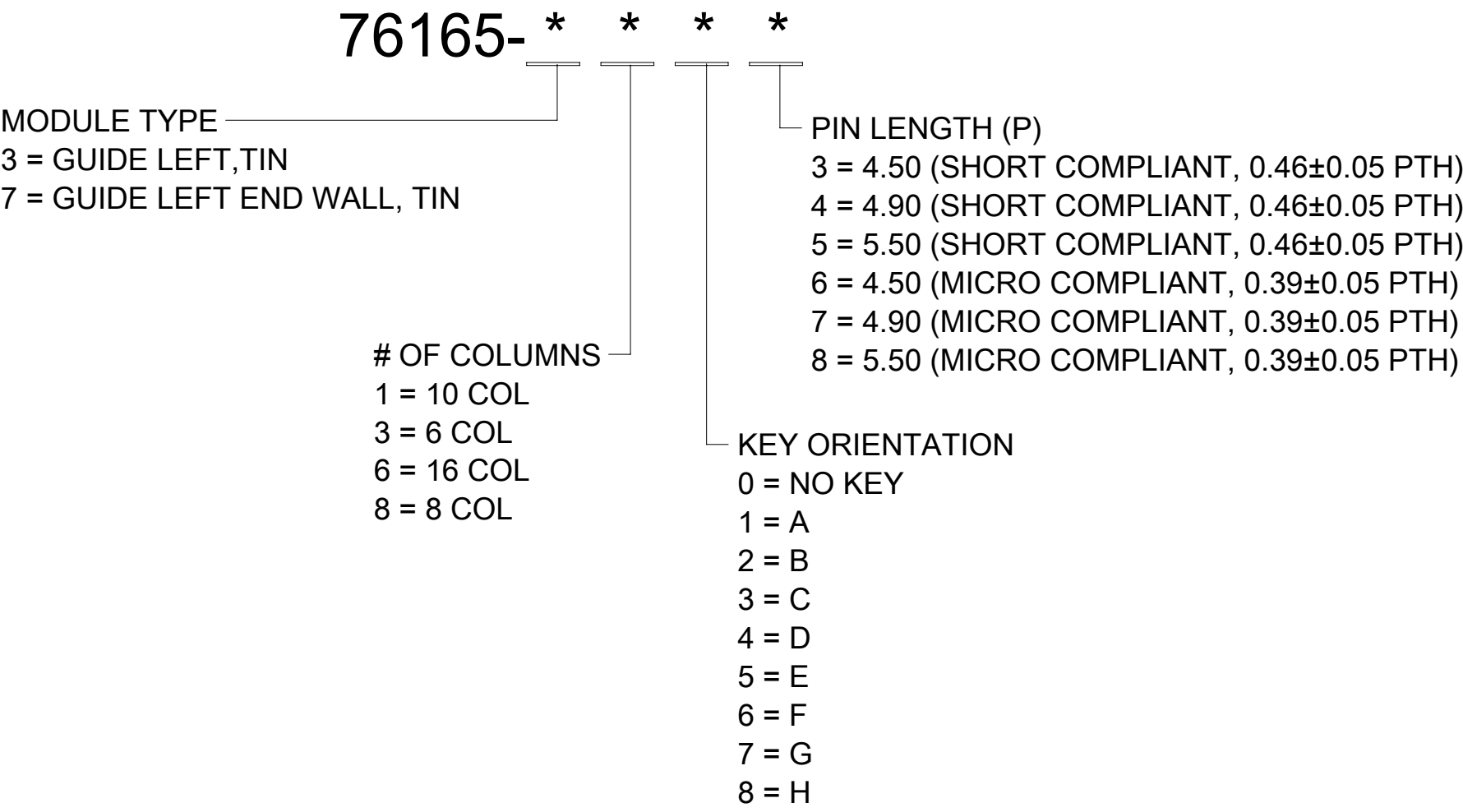
GUIDE LEFT
END WALL
OPTION

MATERIAL NUMBER	# OF COLUMNS	# OF DIFF PAIR	DIM "A"	DIM "B"	GUIDE LEFT OPEN WALL OPTION
76165-*3**	6	18	17.9	9.50	
76165-*8**	8	24	21.7	13.30	
76165-*1**	10	30	25.5	17.10	
76165-*6**	16	48	36.9	28.50	

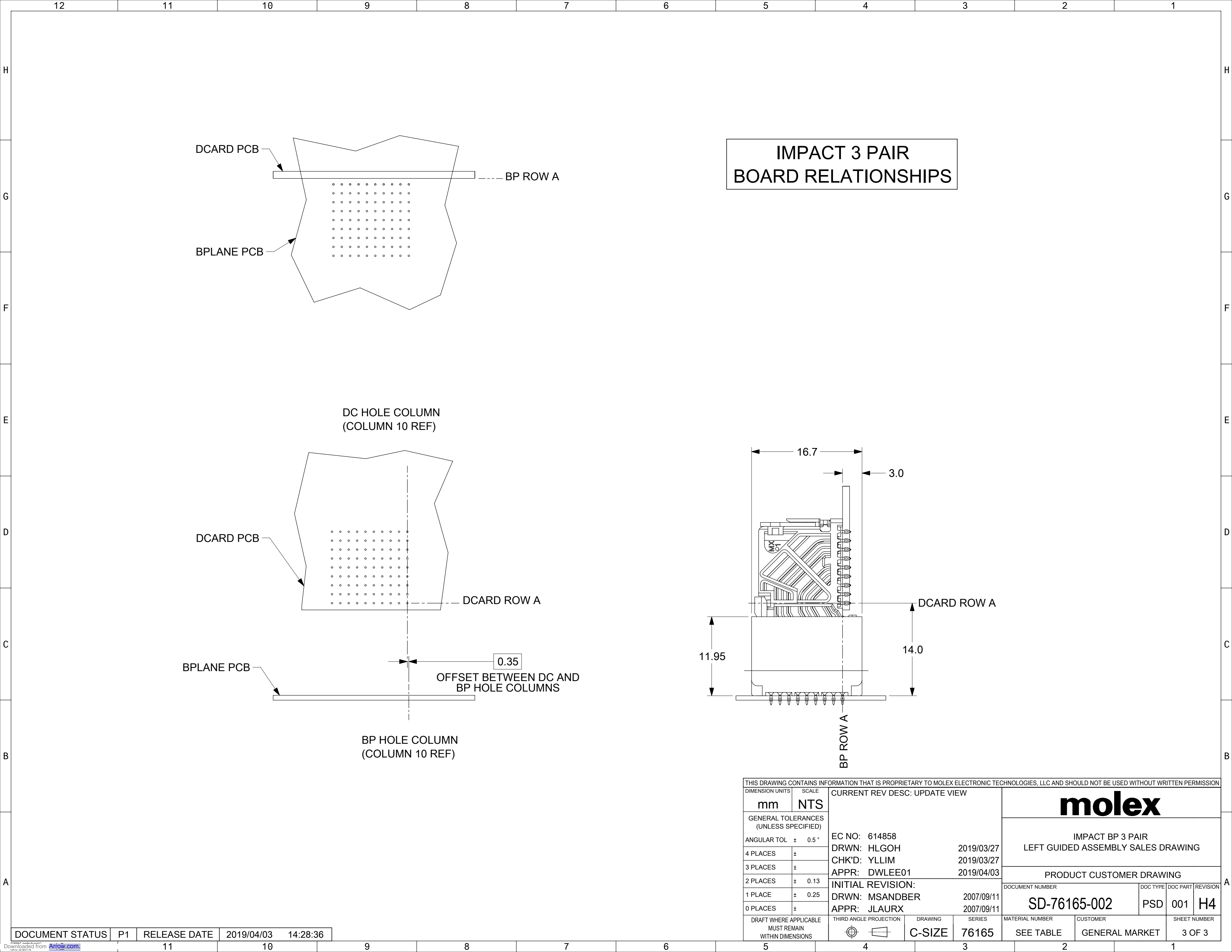


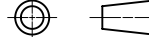
GUIDE LEFT
OPEN WALL
OPTION

PART NUMBER LOGIC



THIS DRAWING CONTAINS INFORMATION THAT IS PROPRIETARY TO MOLEX ELECTRONIC TECHNOLOGIES, LLC AND SHOULD NOT BE USED WITHOUT WRITTEN PERMISSION															
DIMENSION UNITS		SCALE		CURRENT REV DESC: UPDATE VIEW				<div>molex</div>							
mm		NTS													
GENERAL TOLERANCES (UNLESS SPECIFIED)				EC NO: 614858 DRWN: HLGOH2019/03/27 CHK'D: YLLIM2019/03/27 APPR: DWLEE012019/04/03				IMPACT BP 3 PAIR LEFT GUIDED ASSEMBLY SALES DRAWING							
ANGULAR TOL		± 0.5 °						PRODUCT CUSTOMER DRAWING							
4 PLACES		±						DOCUMENT NUMBER				DOC TYPE		DOC PART	
3 PLACES		±						SD-76165-002				PSD		001	
2 PLACES		± 0.13													
1 PLACE		± 0.25		INITIAL REVISION:				REVISION							
0 PLACES		±		DRWN: MSANDBER2007/09/11				H4							
APPR: JLAURX2007/09/11															
DRAFT WHERE APPLICABLE MUST REMAIN WITHIN DIMENSIONS				THIRD ANGLE PROJECTION		DRAWING		SERIES		MATERIAL NUMBER		CUSTOMER		SHEET NUMBER	
						C-SIZE		76165		SEE TABLE		GENERAL MARKET		2 OF 3	



THIS DRAWING CONTAINS INFORMATION THAT IS PROPRIETARY TO MOLEX ELECTRONIC TECHNOLOGIES, LLC AND SHOULD NOT BE USED WITHOUT WRITTEN PERMISSION													
DIMENSION UNITS		SCALE		CURRENT REV DESC: UPDATE VIEW				<div>molex</div> <div>IMPACT BP 3 PAIR LEFT GUIDED ASSEMBLY SALES DRAWING</div>					
mm		NTS											
GENERAL TOLERANCES (UNLESS SPECIFIED)				EC NO: 614858									
ANGULAR TOL ± 0.5 °				DRWN: HLG0H 2019/03/27									
4 PLACES ±				CHK'D: YLLIM 2019/03/27									
3 PLACES ±				APPR: DWLEE01 2019/04/03									
2 PLACES ± 0.13				INITIAL REVISION: DRWN: MSANDBER 2007/09/11 APPR: JLAURX 2007/09/11									
1 PLACE ± 0.25													
0 PLACES ±													
DRAFT WHERE APPLICABLE MUST REMAIN WITHIN DIMENSIONS				PRODUCT CUSTOMER DRAWING									
				DOCUMENT NUMBER SD-76165-002				DOC TYPE PSD		DOC PART 001		REVISION H4	
THIRD ANGLE PROJECTION 				DRAWING C-SIZE		SERIES 76165		MATERIAL NUMBER SEE TABLE		CUSTOMER GENERAL MARKET		SHEET NUMBER 3 OF 3	

DOCUMENT STATUS	P1	RELEASE DATE	2019/04/03	14:28:36
-----------------	----	--------------	------------	----------