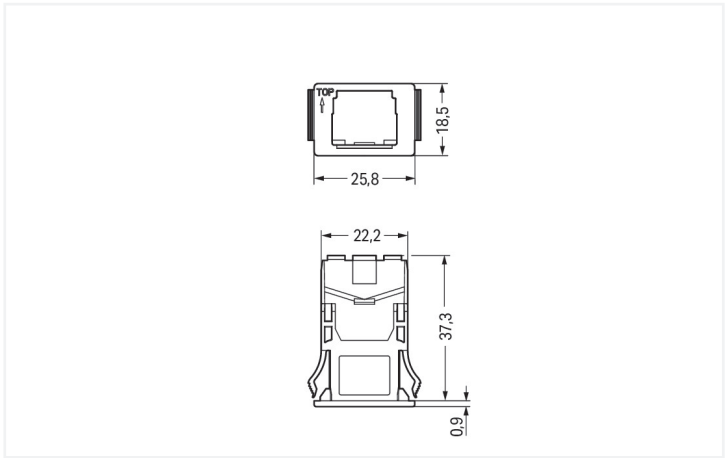




Color: ■ black



Dimensions in mm

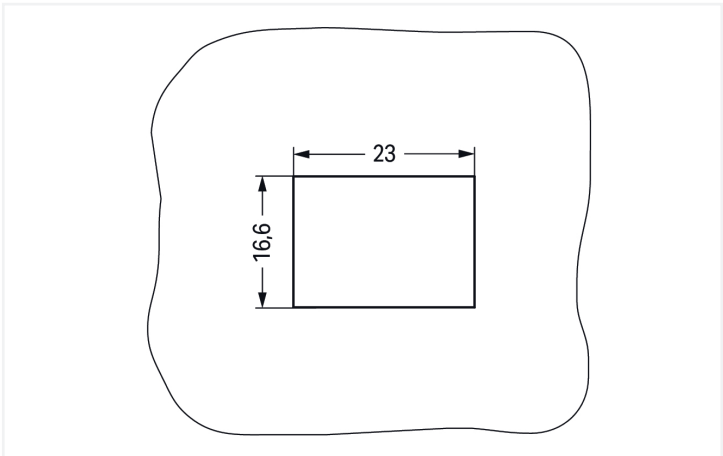


Plate thickness: 1 ... 3 mm  
Cutout tolerance: + 0.1 mm

Please note!



Mounting accessories WINSTA® MIDI 2-pole

When using the mounting accessories from the WINSTA® MIDI product line, zero-defect installation is guaranteed. An extensive range of accessories complements the WINSTA® product line from WAGO. The WINSTA® MIDI Pluggable Connection System with Push-in CAGE CLAMP® spring pressure connection technology facilitates precise electrification. Due to the built-in test slot, connections can be checked even when they are plugged in. This saves time, labor, and money.

Lower costs through fast commissioning and elimination of service expenses – solutions from WINSTA® MIDI

The WINSTA® Pluggable Connection System allows pluggable electrical installation. This saves time, lowers costs, and reduces the need for servicing. Now you can also lower installation expenses without compromising quality and safety: with protection against mismatching reduces the need for servicing and prevents unnecessary downtime.

- simple circuits
- convenient installation and commissioning

Notes		
Note		The snap-in connectors must be relieved of tensile and transverse forces. A surface finish can influence the edge radius of the cutouts. This may affect the snap-in socket fit, so ensure an adequate fit before use. In addition, the punched edge should be on the inside for punched cutouts. The wings of the snap-in connectors must not be mechanically stressed for a long period before use (e.g., due to a pre-locking position).

Connection data		
Connection 1		
Pole number	2	

Physical data		
Width		25.8 mm / 1.016 inches
Height		18.5 mm / 0.728 inches
Depth		38.75 mm / 1.526 inches

Mechanical data		
Housing sheet thickness		1 ... 3 mm / 0.039 ... 0.118 inches
Mounting type		Snap-in flange
Suitable		for socket and plug

Material data		
Note (material data)		<a href="#">Information on material specifications can be found here</a>
Color		black
Insulation material (main housing)		Polyamide (PA66)
Flammability class per UL94		V0
Fire load		0.076 MJ
Weight		2.7 g



Environmental requirements	
Processing temperature	-5 ... +40 °C
Continuous operating temperature	-35 ... +85 °C
Note on continuous operating temperature	Insulating parts for temperatures ≤ 105 °C

Commercial data	
Product Group	20 (Winsta)
PU (SPU)	100 pcs
Packaging type	Box
Country of origin	DE
GTIN	4050821261162
Customs tariff number	39269097900

Product Classification	
UNSPSC	39121402
eCl@ss 10.0	27-44-06-92
eCl@ss 9.0	27-44-06-92
ETIM 9.0	EC002863
ETIM 8.0	EC002863
ECCN	NO US CLASSIFICATION

Environmental Product Compliance	
RoHS Compliance Status	Compliant, No Exemption

Approvals / Certificates	
General approvals	Declarations of conformity and manufacturer's declarations



Approval	Standard	Certificate Name
CCA DEKRA Certification B.V.	EN 61535	71-123228
CCA DEKRA Certification B.V.	IEC 61535	NL -84761

Approval	Standard	Certificate Name
EU-Declaration of Confor- mity WAGO GmbH & Co. KG	-	-

Approvals for marine applications		
-----------------------------------	--	--



Approval	Standard	Certificate Name
ABS American Bureau of Ship- ping	-	24-0095977-PDA
DNV GL Det Norske Veritas, Ger- manischer Lloyd	-	TAE00001Z6
LR Lloyds Register	IEC 61984	LR22429487TA



Downloads

Environmental Product Compliance

Compliance Search			
Environmental Product Compliance 770-317			

Documentation

Bid Text			
770-317	19.02.2019	xml 2.57 KB	
770-317	02.12.2014	doc 23.00 KB	

CAD/CAE-Data

CAD data			
2D/3D Models 770-317			

CAE data	
WSCAD Universe 770-317	
ZUKEN Portal 770-317	

1 Compatible Products

1.1 Optional Accessories

1.1.1 Locking system

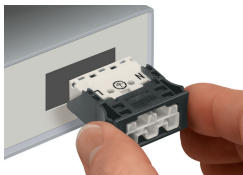
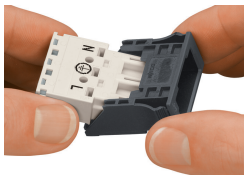
1.1.1.1 Locking system



Item No.: 770-140  
Locking lever; for sockets and plugs; for tool operation; gray

Installation Notes

Installation



Insert the socket or plug into the frame (observe the "TOP" marking on the frame!), then snap the assembled unit into the cutout.

Snap the assembled unit into the cutout.

Subject to changes. Please also observe the further product documentation!

Current addresses can be found at: [www.wago.com](https://www.wago.com)