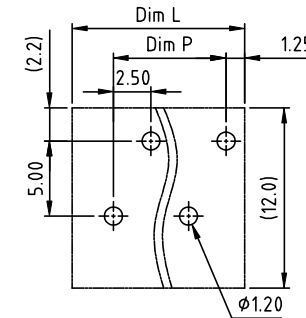
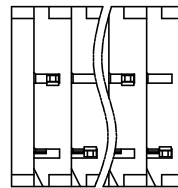
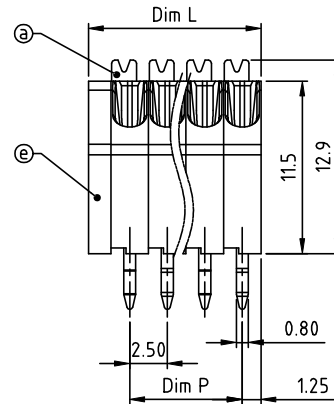
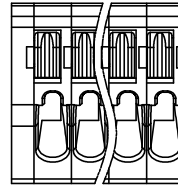
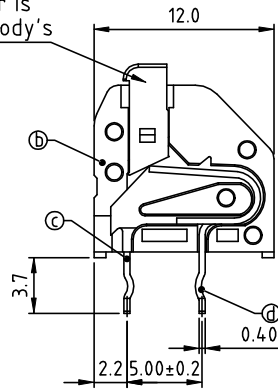


PRODUCT NUMBER	PITCH
HCxxB0x000J0G	2.50mm

The color of lever is consistent with body's



RECOMMENDED P.C.B LAYOUT
TOP VIEW

Material:

- Item③Insulator(lever):Thermoplastic (UL94V-0)
- Item⑤Insulator(housing):Thermoplastic (UL94V-0)
- Item④Side contact pin: PhBz.Tin plated
- Item④Center contact pin: PhBz.Tin plated
- Item⑥Side Cover:Thermoplastic (UL94V-0)

- Electrical:
- | | cULus | CQC | TUV |
|-----------------------------|-----------------|-------|------------------------|
| ●Voltage rating: | 300V | 300V | 150V |
| ●Current rating: | 2A | 2A | 2A |
| ●Wire range: | | | 0.2-0.5mm ² |
| ●Solid wire(AWG): | 20-26 | 20 | |
| ●Stranded wire(AWG): | 20-26 | 20 | |
| ●Wire strip length: | 8.5-10.0mm | | |
| ●Withstanding Voltage: | 1.6KV | 2.5KV | 2.5KV |
| ●Operating temperature: | -40°C to +115°C | | |
| ●The soldering temperature: | 260°C±5°C/5 Sec | | |
| ●Safety Approval: | ULus | CQC | TUV |

N=Number of poles
Dim L=Nx2.5+1.5
Dim P=(N-1)x2.5

Poles	Tolerance
2p/4p/6p/8p	±0.20
10p/12p	±0.30
14p/16p/18p	±0.40
20p/22p/24p	±0.50

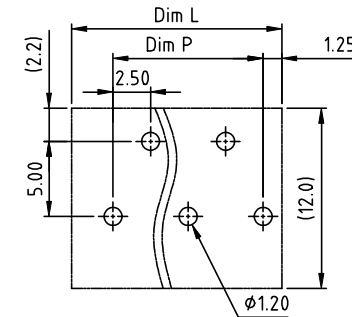
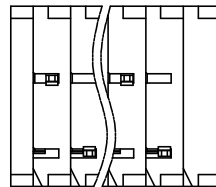
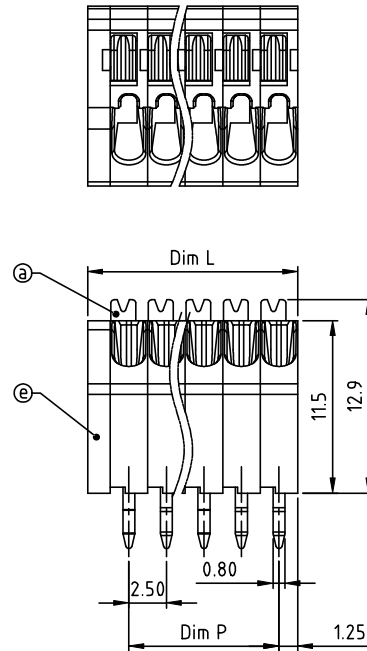
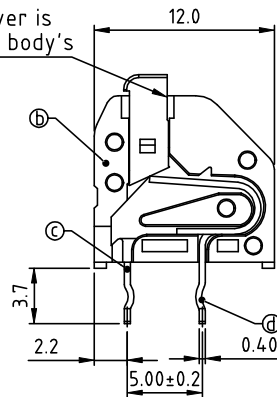
PART NO.: HC xx B0 x 000J0 G

No. of poles	Body Color	RoHS compliant
0	Black (RAL9005)	(lead<4%)
End Stackable 2	Red (RAL3001/D)	In copper Alloy
02 2 poles	Orange(RAL2011/P)	
04 4 poles	Yellow(RAL1018/A)	
...
5	Green(RAL6018/T)	
24 24 poles	6 Blue (RAL5015/A)	
	8 Grey(RAL7004/P)	
	9 White(RAL1102)	
	C Multiple colors	

mat'l. code				surface	tolerance	projection	product family	
				ASME Y14.5	ASME Y14.5		TERMINAL BLOCK	
ltr	ecn no	dr	date	tolerances unless otherwise specified			title	
				angles	X.±0.5		TERMINAL BLOCK	
				mm	X.X±0.3		SPRING CLAMP, 4SD WIRE INLET, WITH LEVER, EVEN POLES	
				X'±1"	X.XX±0.1		scale	
				dr	EVIN ZHONG	052314	dwg no	
				enr	EVIN ZHONG	052314	sheet 1 of 2 size	
				chr	HANKE FENG	052314	HCxxB0x000J0G	
				appd	SHI JUN	052314	A4	
sheet index	revision	A					type	
	sheet	1					CUSTOMER Drawing	

PRODUCT NUMBER	PITCH
HCxxB0x000J0G	2.50mm

The color of lever is consistent with body's



RECOMMENDED P.C.B LAYOUT
TOP VIEW

Material:

- Item③Insulator(lever):Thermoplastic (UL94V-0)
- Item⑤Insulator(housing):Thermoplastic (UL94V-0)
- Item④Side contact pin: PhBz.Tin plated
- Item④Center contact pin: PhBz.Tin plated
- Item⑥Side Cover:Thermoplastic (UL94V-0)

Electrical:	cULus	CQC	TUV
●Voltage rating:	300V	300V	150V
●Current rating:	2A	2A	2A
●Wire range:			0.2-0.5mm ²
●Solid wire(AWG):	20-26	20	
●Stranded wire(AWG):	20-26	20	
●Wire strip length:	8.5-10.0mm		
●Withstanding Voltage:	1.6KV	2.5KV	2.5KV
●Operating temperature:	-40°C to +115°C		
●The soldering temperature:	260°C±5°C/5 Sec		
●Safety Approval:	ULus	CQC	TUV

N=Number of poles
Dim L=Nx2.5+1.5
Dim P=(N-1)x2.5

Poles	Tolerance
3p/5p	±0.20
7p/9p/11p	±0.30
13p/15p/17p	±0.40
19p/21p/23p	±0.50

PART NO.: HC xx B0 x 000J0 G

No. of poles	Body Color	RoHS compliant
0	Black (RAL9005)	(lead<4%)
End Stackable 2	Red (RAL3001/D)	In copper Alloy
03 3 poles	Orange(RAL2011/P)	
05 5 poles	4 Yellow(RAL1018/A)	
...	5 Green(RAL6018/T)	
23 23 poles	6 Blue (RAL5015/A)	
	8 Grey(RAL7004/P)	
	9 White(RAL1102)	
	C Multiple colors	

mat'l. code	surface	tolerance	projection	product family
	ASME Y14.5	ASME Y14.5		TERMINAL BLOCK
ltr	ecn no	dr	date	title
				TERMINAL BLOCK
				SPRING CLAMP,45D WIRE INLET,WITH LEVER,ODD POLES
				dwg no
				sheet 2 of 2 size
				HCxxB0x000J0G
				A4
				type
				CUSTOMER Drawing
sheet index	revision	A		
	sheet	2		