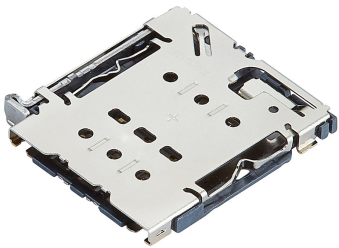




Part Number : 2128460114
Product Description : nano-SIM Card Socket,
Pin-Eject Tray Type, 1.40mm Height, Vertical
Series Number : 212846
Status : Obsolete
Product Category : Memory / SIM Card
Connectors



Documents & Resources

Product Environment Compliance

Compliance

GADSL/IMDS	Not Relevant
China RoHS	Product not active
EU ELV	Product not active
Low-Halogen Status	Product not active
REACH SVHC	Not Contained per D(2024)7663-DC (21 Jan 2025)
EU RoHS	Compliant per EU 2015/863

Multiple Part Product Compliance Statements

- Eu RoHS
- REACH SVHC
- Low-Halogen

Multiple Part Industry Compliance Documents

- IPC 1752A Class C
- IPC 1752A Class D
- Molex Product Compliance Declaration
- IEC-62474
- chemSHERPA (xml)

EU RoHS Certificate of Compliance

Part Details

General

Status	Obsolete
--------	----------

Category	Memory / SIM Card Connectors
Series	212846
Description	nano-SIM Card Socket, Pin-Eject Tray Type, 1.40mm Height, Vertical
Comments	Tray is customer sourced.
Product Name	nano-SIM
Style	Pin-Eject
UPC	193264228140

Electrical

Current - Maximum per Contact	0.5A
Voltage - Maximum	10V AC (RMS)/DC

Physical

Card Detection Switch	Open
Card Entry Location	Front
Circuits (Loaded)	6
Circuits (maximum)	6
Color - Resin	Black
Durability (mating cycles max)	2000 Pin-Eject, 5000 Tray Handle
Ejector Button Side	Left
Material - Contact	Copper Alloy
Material - Plating Mating	Gold over Palladium Nickel
Material - Plating Termination	Gold
Material - Resin	Liquid Crystal Polymer
Material - Shell	Stainless Steel
Net Weight	0.445/g
Packaging Type	Embossed Tape on Reel
PCB Retention	None
Pitch - Mating Interface	1.10mm
Temperature Range - Operating	-40° to +85°C
Termination Interface Style	Surface Mount