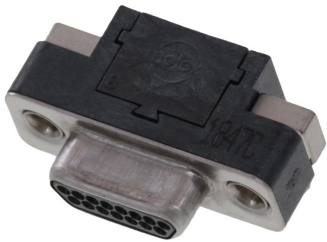




**Part Number :** [836129203](#)  
**Product Description :** 1.27mm Pitch  
Commercial Micro-D, PCB Mount, Right-Angle  
Plug, 15 Circuits  
**Series Number :** 83612  
**Status :** Active  
**Product Category :** I/O Connectors



## Documents & Resources


**Drawings**  
[836129203\\_sd.pdf](#)

**3D Models and Design Files**  
[836129203\\_stp.zip](#)

**Specifications**  
[PS-83421-001-001.pdf](#)

## Product Environment Compliance

### Compliance

GADSL/IMDS	Not Relevant
China RoHS	
EU ELV	Not Relevant
Low-Halogen Status	Low-Halogen per IEC 61249-2-21
REACH SVHC	Not Contained per D(2022)4187-DC (10 June 2022)
EU RoHS	Compliant per EU 2015/863

### Multiple Part Product Compliance Statements

- Eu RoHS
- REACH SVHC
- Low-Halogen

### Multiple Part Industry Compliance Documents

- IPC 1752A Class C
- IPC 1752A Class D
- Molex Product Compliance Declaration

- IEC-62474
- chemSHERPA (xml)

## EU RoHS Certificate of Compliance

---

### Part Details

#### General

Status	Active
Category	I/O Connectors
Series	83612
Description	1.27mm Pitch Commercial Micro-D, PCB Mount, Right-Angle Plug, 15 Circuits
Application	Wire-to-Board
Comments	With Jack Posts Not Installed
Component Type	Plug
Product Name	Commercial Micro-D
Type	N/A
UPC	822348046447

#### Electrical

Current - Maximum per Contact	1.0A
Shield Type	Full Shield
Shielded	Yes
Voltage - Maximum	350V AC

#### Physical

Boot Color	N/A
Circuits (Loaded)	15
Circuits (maximum)	15
Durability (mating cycles max)	500
Gender	Plug
Lock to Mating Part	Yes
Material - Plating Mating	Gold
Number of Rows	2
Orientation	Right Angle

Packaging Type	Tube
Panel Mount	Yes
PC Tail Length	2.79mm
PCB Locator	Yes
PCB Retention	Yes
PCB Thickness - Recommended	1.52mm
Pitch - Mating Interface	1.27mm
Pitch - Termination Interface	1.27mm
Plating min - Mating	0.381µm
Polarized to Mating Part	Yes
Polarized to PCB	Yes
Ports	1
Temperature Range - Operating	-40° to +125°C
Termination Interface Style	Through Hole
Waterproof / Dustproof	No
Wire Size (AWG)	N/A

---

## Mates With / Use With

### Mates with Part(s)

Description	Part Number
Commercial Micro-D Cable Receptacle Kits and Cable Assemblies	<u>83422</u>

---

This document was generated on Mar 08, 2025