

Q search

What is XX series

>

How to select series

>

How it works series

>

Development Boards

>

DFR0049 Analog Gas Sensor (QM-NG1)

>

DFR0100 DFRduino Beginner Kit For Arduino V3

>

DFR0133 X-Board

>

DFR0162 X-Board V2

>

DFR0188 Flymaple V1.1

>

DFR0182 Wirless GamePad V2.0

>

DFR0267 Bluno

>

DFR0282 Beetle

>

DFR0283 Dreamer Maple V1.0

>

DFR0296 Bluno Nano

>

DFR0302 MiniQ 2WD Plus

>

DFR0304 BLE Wireless Gamepad V2

>

DFR0305 RoMeo BLE

>

DFR0306 Bluno Mega 1280

>

DFR0321 Wido-WIFI IoT Node

>

DFR0323 Bluno Mega 2560

>

DFR0329 Bluno M3

>

DFR0339 Bluno Beetle

>

DFR0342 Ultra-Low-power

>

Introduction

Features

Specification

Board Overview

Tutorial

More Documents

## SKU:SEN0570



## Introduction

Fermion: MEMS Smoke sensor employs state-of-the-art microelectromechanical system (MEMS) technology, endowing the sensor with compact dimensions (13x13x2.5mm), low power consumption (<20mA), minimal heat generation, short preheating time, and swift response recovery. The sensor can measure smoke concentration qualitatively and is suitable for smoke alarm and other application scenarios. The MEMS series currently encompasses 11 different types of gas sensors (HCHO, CO, CH4, VOC, NH3, H2S, EtOH, Smoke, Odor, H2, NO2), which can be combined as per specific requirements. Please note: This sensor is capable of qualitative measurements only. For quantitative measurements, kindly consider purchasing the [Factory-calibrated Gas Sensor](#).

## Precautions for use

- Kindly remove the protective film before usage.
- To prevent exposure to volatile silicon compounds vapors (such as silicone adhesive, hair gel, silicone rubber, or other locations where volatile silicon compounds are present).
- Avoid exposure to high concentrations of corrosive gases (such as H2S, SOX, Cl2, HCl, etc.).
- Prevent contamination from alkalis, alkali metal salts, and halogens.
- Refrain from prolonged exposure to extreme environments (such as high temperatures, high humidity, high pollution).
- Avoid contact with water, condensation, and freezing.
- Minimize excessive vibration, impact, and dropping.
- Please refrain from employing this module in systems that involve personal safety concerns.
- For extended periods of non-usage, it is advisable to preheat the module for at least 24 hours.

## Other Mems Gas Sensors

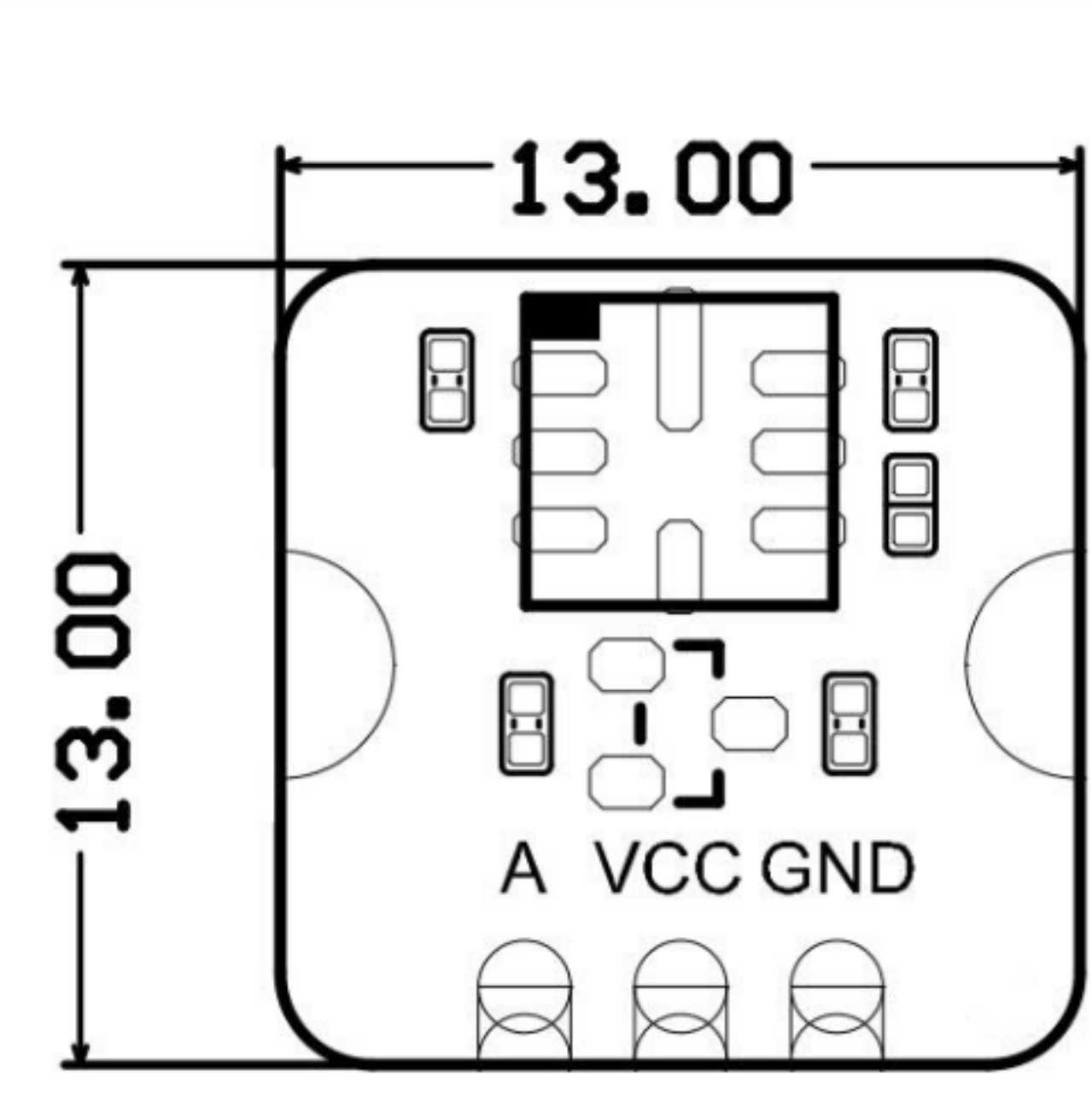
SKU	<a href="#">SEN0563</a>	<a href="#">SEN0564</a>	<a href="#">SEN0565</a>	<a href="#">SEN0566</a>	<a href="#">SEN0567</a>
Gas Type	HCHO	CO	CH4	VOC	NH3

SKU	<a href="#">SEN0569</a>	<a href="#">SEN0570</a>	<a href="#">SEN0571</a>	<a href="#">SEN0572</a>	<a href="#">SEN0573</a>
Gas Type	EtOH	Smoke	Odor	H2	NO2

## Features

- Compact size, measuring only 13\*13\*2.5mm
- Low power consumption, minimal heat generation, operating current <20mA
- High sensitivity and rapid response recovery
- Advanced MEMS technology

## Specification



- Gas detected: EtOH, Smoke
- Detection range: 10-1000ppm
- Operating voltage: 3.3-5V
- Operating current: <20mA
- Output signal: Analog voltage
- Load resistance (RL) : 4.7KΩ
- Sensitivity: R0(in air)/Rs(in 200ppm EtOH) ≥ 3
- Operating temperature: -10-50°C
- Operating humidity: 15-90%RH (non-condensing)
- Lifespan: ≥5 years (in air)
- Dimension: 13×13 x 2.5mm/0.051×0.051x0.1"

## Board Overview

Num	Label	Description
1	A	Analog Voltage Output
2	VCC	+
3	GND	-

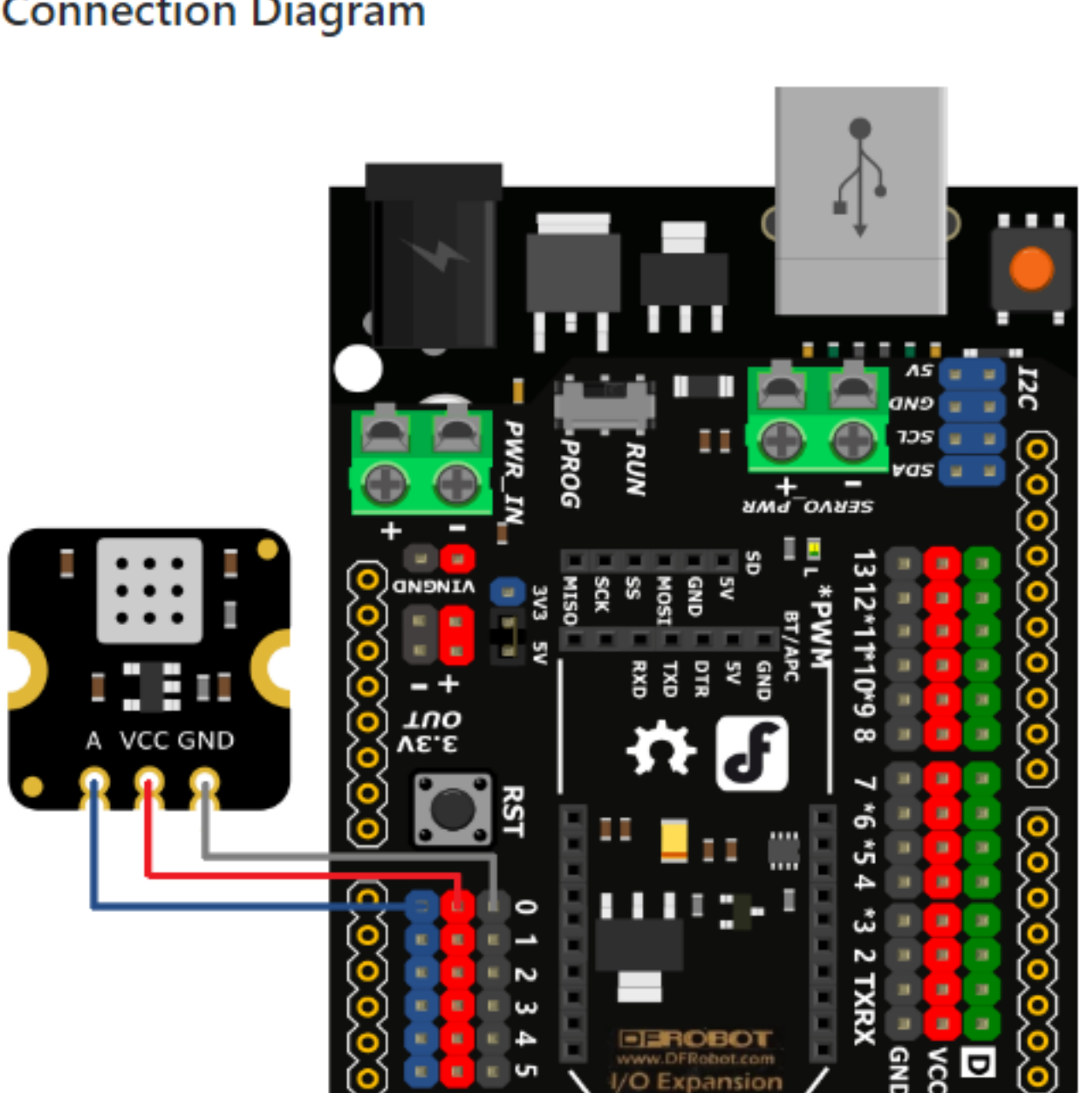
## Tutorial

NOTE: The module needs to be warmed up for more than 5 minutes when powered on for the first time. It is recommended to warm up for more than 24 hours if it has not been used for a long time.

## Requirements

- Hardware
  - [DFRduino UNO R3](#) (or similar) x 1
  - MEMS Gas Sensor x 1
  - Jumper wires
- Software
  - [Arduino IDE](#)

## Connection Diagram



## Sample Code

### 1.Read the sensor raw value

```
int sensorPin = A0;
int sensorValue = 0;

void setup()
{
  Serial.begin(9600); //Set serial baud rate to 9600 bps
}

void loop()
{
  sensorValue = analogRead(sensorPin);
  Serial.println(sensorValue);
  delay(100);
}
```

## Expected Results

Open the serial port monitor and get the original value of the sensor.

## More Documents

- [Schematics & Dimension](#)
- [Characteristic Parameter](#)

Get [CCS811 Air Quality Sensor](#) from [DFRobot Store](#) or [DFRobot Distributor](#).

[Turn to the Top](#)