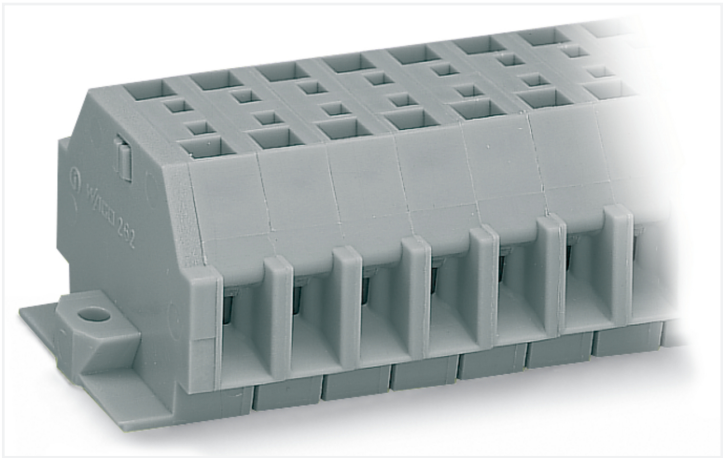


Data Sheet | Item Number: 262-156

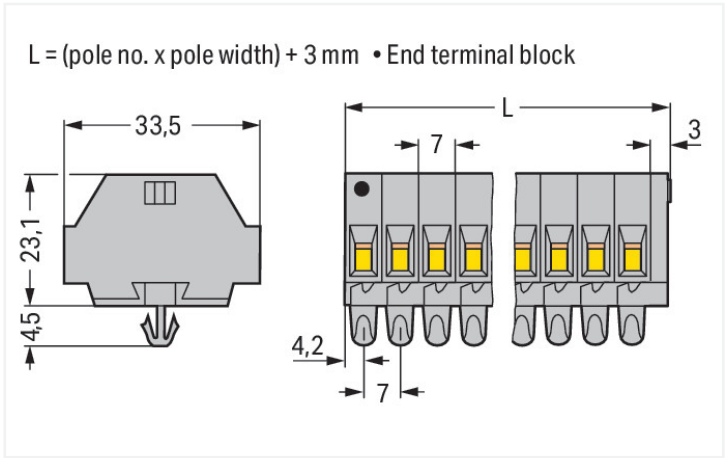
2-conductor terminal strip; without push-buttons; with snap-in mounting feet; 6-pole; for plate thickness 0.6 - 1.2 mm; Fixing hole 3.5 mm Ø; 4 mm²; CAGE CLAMP®; 4,00 mm²; gray

<https://www.wago.com/262-156>



Color: ■ gray

Similar to illustration



Dimensions in mm

Through terminal block, 262 Series, CAGE CLAMP®

This through terminal block (item number 262-156) is designed to connect conductors quickly and easily. Whether in industrial or building applications, our rail-mount through terminal blocks are the perfect solution to quickly and securely connect electrical conductors. Depending on the model, you can use them for either typical through-wiring or potential distribution. This mini rail-mount terminal block has a rated voltage of 690 V and can handle currents up to 32 A. Conductors can only be connected to this through terminal block if their strip length is between 9 mm and 10 mm. Featuring conductor terminals along with CAGE CLAMP®, this connector is highly versatile. Our CAGE CLAMP® connection offers a safe and maintenance-free way to connect all types of conductors. You do not need to prepare the conductor in any way, such as crimping ferrules. Depending on the type of conductor, this through terminal block is designed for conductor cross sections ranging from 0.08 mm² to 4 mm². It features one level and twelve clamping points that you can use to connect six potentials / 6 poles. The gray housing is made of polyamide (PA66) for insulation. This mini rail-mount terminal block is operated with an operating tool. Conductors made of copper can be connected thanks to side-entry wiring.

Electrical data

Ratings per IEC/EN	
Nominal voltage (III/3)	690 V
Rated impulse withstand voltage (III / 3)	8 kV
Rated current	32 A
Legend (ratings)	(III / 3) Δ Overvoltage category III / Pollution degree 3

Approvals per		UL 1059		
Use group	B	C	D	
Rated voltage	300 V	300 V	300 V	
Rated current	20 A	20 A	10 A	

Approvals per		CSA 22.2 No 158		
Use group	B	C	D	
Rated voltage	600 V	300 V	600 V	
Rated current	5 A	25 A	5 A	

Connection data

Clamping units	12
Total number of potentials	6
Number of levels	1

Connection 1	
Connection technology	CAGE CLAMP®
Actuation type	Operating tool
Connectable conductor materials	Copper
Solid conductor	0.08 ... 4 mm² / 28 ... 12 AWG
Fine-stranded conductor	0.08 ... 4 mm² / 28 ... 12 AWG
Strip length	9 ... 10 mm / 0.35 ... 0.39 inches
Pole number	6
Wiring direction	Side-entry wiring



Physical data		
Width		45 mm / 1.772 inches
Height		33.5 mm / 1.319 inches
Height from the surface		23.1 mm / 0.909 inches
Depth		27.5 mm / 1.083 inches
Module width		7 mm / 0.276 inches

Mechanical data		
Design		horizontal type
Mounting type		Snap-in foot
Marking level		Side marking

Material data		
Note (material data)		<a href="#">Information on material specifications can be found here</a>
Color		gray
Material group		I
Insulation material (main housing)		Polyamide (PA66)
Flammability class per UL94		V0
Fire load		0.507 MJ
Halogen-free		Yes
Weight		27.1 g

Commercial data		
PU (SPU)		50 pcs
Packaging type		Box
Country of origin		DE
GTIN		4044918642354
Customs tariff number		85369010000

Product classification		
UNSPSC		39121410
eCl@ss 10.0		27-14-11-06
eCl@ss 9.0		27-14-11-06
ETIM 9.0		EC001284
ETIM 8.0		EC001284
ECCN		NO US CLASSIFICATION

Environmental Product Compliance		
RoHS Compliance Status		Compliant,No Exemption



Approvals / Certificates

General approvals



Approval	Standard	Certificate Name
CCA DEKRA Certification B.V.	EN 60998	NTR NL 7661
CSA DEKRA Certification B.V.	C22.2	70010891
KEMA/KEUR DEKRA Certification B.V.	EN 60998	71-102644
UR Underwriters Laboratories Inc.	UL 1059	E45172

Declarations of conformity and manufacturer's declarations

Approval	Standard	Certificate Name
EU-Declaration of Confor- mity WAGO GmbH & Co. KG	-	-
UK-Declaration of Confor- mity WAGO GmbH & Co. KG	-	-

Approvals for marine applications



Approval	Standard	Certificate Name
ABS American Bureau of Ship- ping	-	19-HG1869868-PDA
BV Bureau Veritas S.A.	EN 60947	07436/F0 BV
DNV GL Det Norske Veritas, Ger- manischer Lloyd	-	TAE00001V2
LR Lloyds Register	IEC 60998	LR22173030TA

Downloads

Environmental Product Compliance

Compliance Search

Environmental Product  
Compliance 262-156



Documentation

Bid Text

262-156	19.02.2019	xml 3.08 KB	
262-156	17.08.2017	doc 25.00 KB	



CAD/CAE-Data	
<div>CAD data</div> <div>2D/3D Models 262-156</div> <div>↓</div>	<div>CAE data</div> <div>EPLAN Data Portal 262-156</div> <div>↓</div>
	<div>WSCAD Universe 262-156</div> <div>↓</div>
	<div>ZUKEN Portal 262-156</div> <div>↓</div>

1 Compatible Products
1.1 Optional Accessories
1.1.1 DIN-rail
1.1.1.1 Mounting accessories



**Item No.: 210-154**  
Aluminum carrier rail; 1000 mm long; 18 mm wide; 7 mm high; silver-colored

1.1.2 Ferrule			
1.1.2.1 Ferrule			
<div>↓</div> <div><b>Item No.: 216-241</b> Ferrule; Sleeve for 0.5 mm² / 20 AWG; insulated; electro-tin plated; electrolytic copper; gastight crimped; acc. to DIN 46228, Part 4/09.90; white</div> <div>↓</div>	<div>↓</div> <div><b>Item No.: 216-141</b> Ferrule; Sleeve for 0.5 mm² / 20 AWG; un-insulated; electro-tin plated; electrolytic copper; gastight crimped; acc. to DIN 46228, Part 1/08.92</div> <div>↓</div>	<div>↓</div> <div><b>Item No.: 216-242</b> Ferrule; Sleeve for 0.75 mm² / 18 AWG; insulated; electro-tin plated; electrolytic copper; gastight crimped; acc. to DIN 46228, Part 4/09.90; gray</div> <div>↓</div>	<div>↓</div> <div><b>Item No.: 216-262</b> Ferrule; Sleeve for 0.75 mm² / 18 AWG; insulated; electro-tin plated; electrolytic copper; gastight crimped; acc. to DIN 46228, Part 4/09.90; gray</div> <div>↓</div>
<div>↓</div> <div><b>Item No.: 216-142</b> Ferrule; Sleeve for 0.75 mm² / 18 AWG; un-insulated; electro-tin plated; electrolytic copper; gastight crimped; acc. to DIN 46228, Part 1/08.92</div> <div>↓</div>	<div>↓</div> <div><b>Item No.: 216-243</b> Ferrule; Sleeve for 1 mm² / AWG 18; insulated; electro-tin plated; electrolytic copper; gastight crimped; acc. to DIN 46228, Part 4/09.90; red</div> <div>↓</div>	<div>↓</div> <div><b>Item No.: 216-263</b> Ferrule; Sleeve for 1 mm² / AWG 18; insulated; electro-tin plated; electrolytic copper; gastight crimped; acc. to DIN 46228, Part 4/09.90; red</div> <div>↓</div>	<div>↓</div> <div><b>Item No.: 216-143</b> Ferrule; Sleeve for 1 mm² / AWG 18; un-insulated; electro-tin plated; electrolytic copper; gastight crimped; acc. to DIN 46228, Part 1/08.92</div> <div>↓</div>
<div>↓</div> <div><b>Item No.: 216-244</b> Ferrule; Sleeve for 1.5 mm² / AWG 16; insulated; electro-tin plated; electrolytic copper; gastight crimped; acc. to DIN 46228, Part 4/09.90; black</div> <div>↓</div>	<div>↓</div> <div><b>Item No.: 216-264</b> Ferrule; Sleeve for 1.5 mm² / AWG 16; insulated; electro-tin plated; electrolytic copper; gastight crimped; acc. to DIN 46228, Part 4/09.90; black</div> <div>↓</div>	<div>↓</div> <div><b>Item No.: 216-284</b> Ferrule; Sleeve for 1.5 mm² / AWG 16; insulated; electro-tin plated; electrolytic copper; gastight crimped; acc. to DIN 46228, Part 4/09.90; black</div> <div>↓</div>	<div>↓</div> <div><b>Item No.: 216-144</b> Ferrule; Sleeve for 1.5 mm² / AWG 16; un-insulated; electro-tin plated; electrolytic copper; gastight crimped; acc. to DIN 46228, Part 1/08.92; silver-colored</div> <div>↓</div>
<div>↓</div> <div><b>Item No.: 216-289</b> Ferrule; Sleeve for 10 mm² / AWG 8; insulated; electro-tin plated; electrolytic copper; gastight crimped; acc. to DIN 46228, Part 4/09.90; red</div> <div>↓</div>	<div>↓</div> <div><b>Item No.: 216-209</b> Ferrule; Sleeve for 10 mm² / AWG 8; insulated; electro-tin plated; red</div> <div>↓</div>	<div>↓</div> <div><b>Item No.: 216-109</b> Ferrule; Sleeve for 10 mm² / AWG 8; un-insulated; electro-tin plated</div> <div>↓</div>	<div>↓</div> <div><b>Item No.: 216-210</b> Ferrule; Sleeve for 16 mm² / AWG 6; insulated; electro-tin plated; electrolytic copper; gastight crimped; acc. to DIN 46228, Part 4/09.90; blue</div> <div>↓</div>
<div>↓</div> <div><b>Item No.: 216-110</b> Ferrule; Sleeve for 16 mm² / AWG 6; un-insulated; electro-tin plated; brown metallic</div> <div>↓</div>	<div>↓</div> <div><b>Item No.: 216-246</b> Ferrule; Sleeve for 2.5 mm² / AWG 14; insulated; electro-tin plated; electrolytic copper; gastight crimped; acc. to DIN 46228, Part 4/09.90; blue</div> <div>↓</div>	<div>↓</div> <div><b>Item No.: 216-266</b> Ferrule; Sleeve for 2.5 mm² / AWG 14; insulated; electro-tin plated; electrolytic copper; gastight crimped; acc. to DIN 46228, Part 4/09.90; blue</div> <div>↓</div>	<div>↓</div> <div><b>Item No.: 216-286</b> Ferrule; Sleeve for 2.5 mm² / AWG 14; insulated; electro-tin plated; electrolytic copper; gastight crimped; acc. to DIN 46228, Part 4/09.90; blue</div> <div>↓</div>



1.1.2.1 Ferrule



**Item No.: 216-267**  
Ferrule; Sleeve for 4 mm² / AWG 12; insulated; electro-tin plated; electrolytic copper; gastight crimped; acc. to DIN 46228, Part 4/09.90; gray



**Item No.: 216-287**  
Ferrule; Sleeve for 4 mm² / AWG 12; insulated; electro-tin plated; electrolytic copper; gastight crimped; acc. to DIN 46228, Part 4/09.90; gray



**Item No.: 216-208**  
Ferrule; Sleeve for 6 mm² / AWG 10; insulated; electro-tin plated; electrolytic copper; gastight crimped; acc. to DIN 46228, Part 4/09.90; yellow



**Item No.: 216-288**  
Ferrule; Sleeve for 6 mm² / AWG 10; insulated; electro-tin plated; electrolytic copper; gastight crimped; acc. to DIN 46228, Part 4/09.90; yellow



**Item No.: 216-108**  
Ferrule; Sleeve for 6 mm² / AWG 10; uninsulated; electro-tin plated; silver-colored

1.1.3 Installation

1.1.3.1 Mounting accessories



**Item No.: 209-137**  
Mounting adapter; can be used as end stop; 6.5 mm wide; gray



**Item No.: 209-120**  
Mounting foot; can be snapped on terminal blocks with snap-in mounting foot; for mounting on relay-modules; 6.4 mm wide; gray

1.1.4 Jumper

1.1.4.1 Jumper



**Item No.: 262-402**  
Jumper; for conductor entry; 2-way; insulated; gray

1.1.5 Marking

1.1.5.1 Marking strip



**Item No.: 210-833**  
Marking strips; 25 m on roll; 6 mm wide; plain; Self-adhesive; white

1.1.6 Test and measurement

1.1.6.1 Testing accessories



**Item No.: 249-137**  
Test plug module; without locking device; modular; for 2-conductor terminal blocks; gray

1.1.7 Tool

1.1.7.1 Operating tool



**Item No.: 210-658**  
Operating tool; Blade: 3.5 x 0.5 mm; with a partially insulated shaft; angled; short; multicoloured



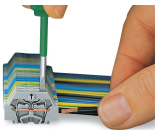
**Item No.: 210-720**  
Operating tool; Blade: 3.5 x 0.5 mm; with a partially insulated shaft; multicoloured



**Item No.: 210-657**  
Operating tool; Blade: 3.5 x 0.5 mm; with a partially insulated shaft; short; multicoloured

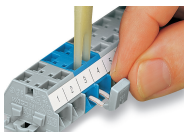
Installation Notes

Conductor termination



**CAGE CLAMP® connection**  
Inserting a conductor.  
With ferruled conductors, it is necessary to use a terminal block one size larger than the conductor's nominal cross-section.

Commoning



Commoning with comb-style jumper bar.

Installation



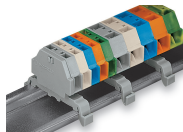
Mounting a terminal strip with snap-in feet into holes.



Mounting a terminal strip with snap-in feet onto aluminum rail.



Terminal strip with snap-in mounting feet  
Snapping a mounting foot (209-120).  
(Distance between mounting feet: approx. 25 ... 30 mm)



Terminal strip; with snap-in mounting feet; for DIN-35 rail



Terminal strip with snap-in mounting feet, for 0.6 ... 1.2 mm plate thickness, 3.5 mm mounting hole diameter (also for 210-154 Aluminum Rail or with 209-120 Mounting Foot for DIN-35 rail)



Marking



Marking with self-adhesive marking strips.

Marking by direct printing (upon request).