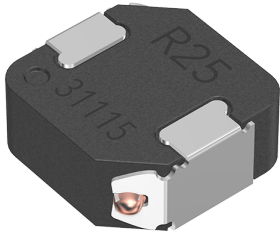


SPM6530T-4R7M



Applications	Commercial Grade
Feature	Wire Wound
	Magnetic Shield
	Metal Core
Series   Type	SPM
Status	Production
Brand	TDK



Size	
Length(L)	7.10mm ±0.30mm
Width(W)	6.50mm ±0.30mm
Thickness   Height	3.00mm Max.
Recommended Land Pattern (A)	1.85mm Nom.
Recommended Land Pattern (B)	3.70mm Nom.
Recommended Land Pattern (C)	3.40mm Nom.

Electrical Characteristics	
Inductance	4.7μH ±20% at 100kHz
Rated Current (L Change) [Typ.]	6.2A (20% Down)
Rated Current (L Change) [Max.]	
Rated Current (Temperature Rise) [Typ.]	5.6A (40°C Rise)
Rated Current (Temperature Rise) [Max.]	
DC Resistance [Typ.]	35.8mΩ
DC Resistance [Max.]	39.4mΩ
Rated Voltage [Max.]	
Self Resonant Frequency [Min.]	
Self Resonant Frequency [Typ.]	
Q [Min.]	
Q [Typ.]	

Other	
Operating Temp. Range	-40 to 125°C (Including Self-Temp. Rise)
Soldering Method	Reflow
	Iron Soldering
AEC-Q200	NO
Packing	Embossed (Plastic)Taping [330mm Reel, Tape width 16mm]
Package Quantity	1000pcs

! Images are for reference only and show exemplary products.  
! This PDF document was created based on the data listed on the TDK Corporation website.  
! All specifications are subject to change without notice.

SPM6530T-4R7M

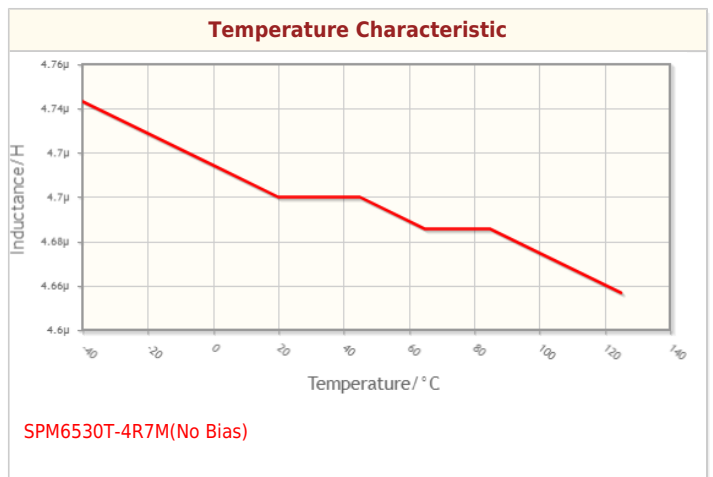
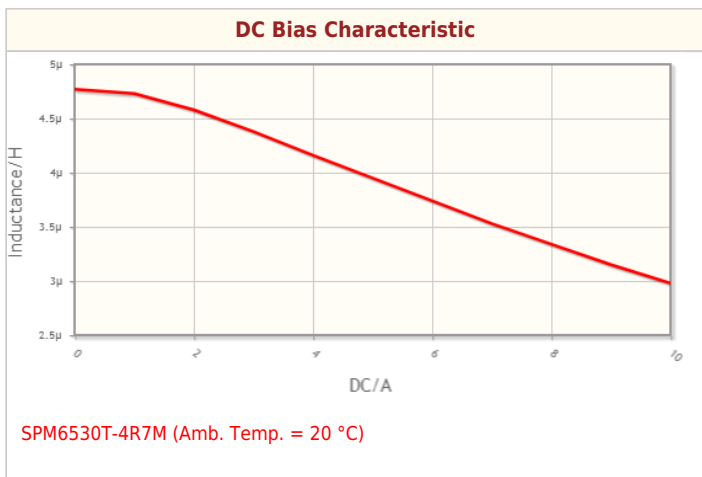
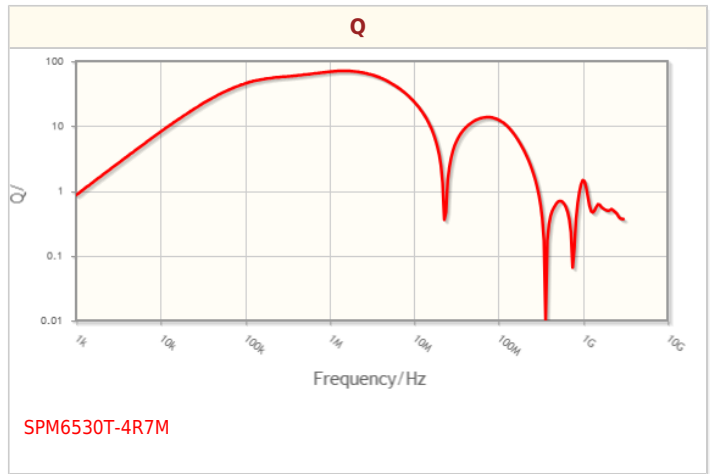
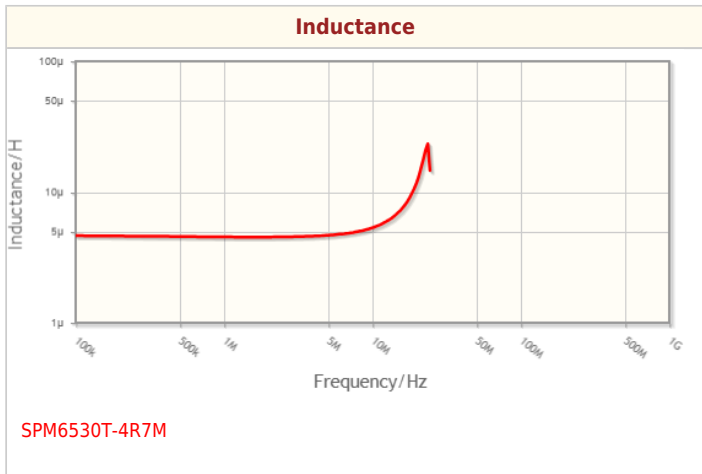
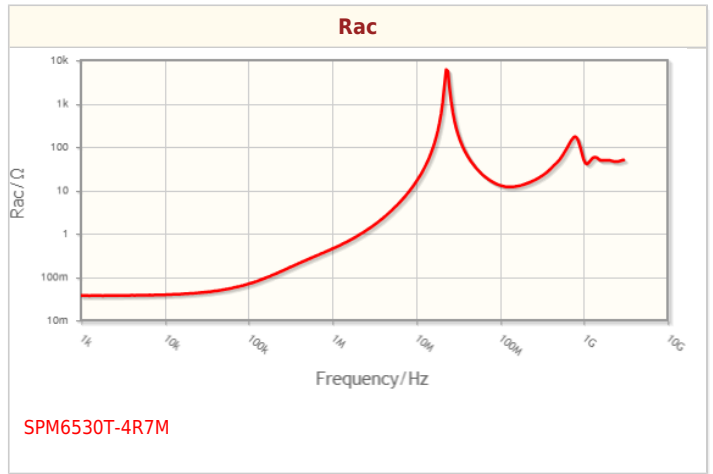
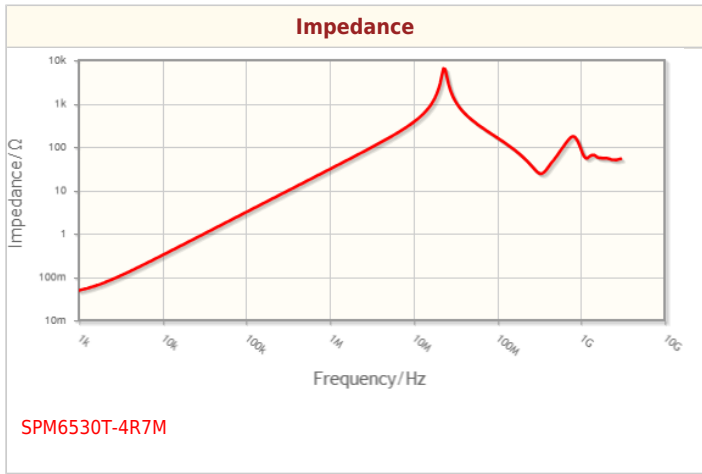


Weight	0.656g
--------	--------

SPM6530T-4R7M



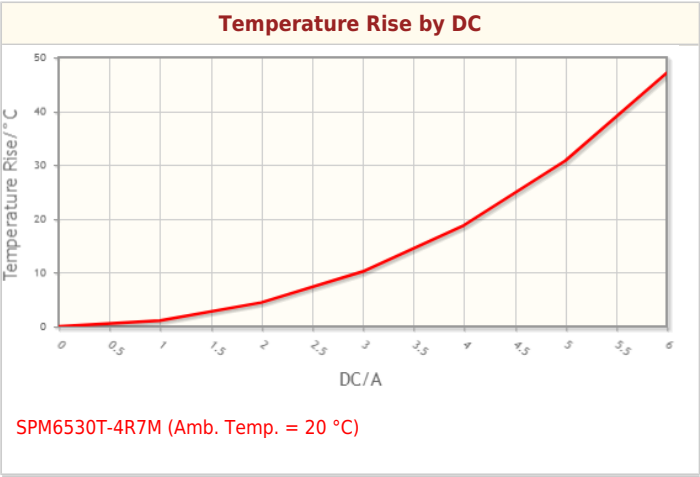
Characteristic Graphs(This is reference data, and does not guarantee the products characteristics.)



SPM6530T-4R7M



# Characteristic Graphs(This is reference data, and does not guarantee the products characteristics.)





# Associated Images

