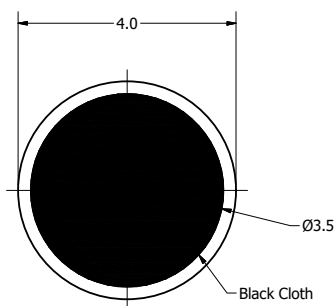
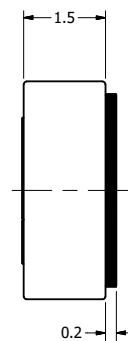


Part Number:	DRAWN	4/25/2017
	CJ	
	CHECKED	4/28/2017
Description:	P.D.	
	APPROVED	4/28/2017
	C.E.	
This document contains data proprietary to DB Unlimited. Any use or reproduction, in any form, without prior written permission of DB Unlimited is prohibited. All terms and conditions can be found at <a href="http://www.dbunlimitedco.com">www.dbunlimitedco.com</a>		

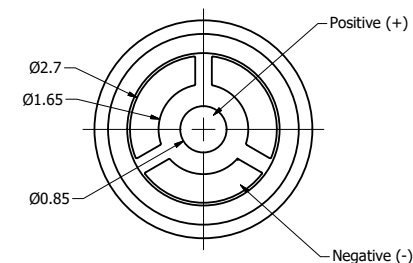
Top View



Side View



Bottom View



Items	Specifications	Conditions				
Directivity	Omnidirectional					
Sensitivity	-44 ± 3	dB				
Frequency Range	40 ~ 20,000	Hz				
Rated Voltage	2	V				
Voltage Range	1 ~ 10	V				
Output Impedance	2,200	Ω				
Max. Rated Current	450	μA				
Storage Temperature	-40 ~ +85	°C				
Operating Temperature	-40 ~ +85	°C				
Signal to Noise Ratio	>60	dB				
Mount Type	Surface Mount					
Connection Method	Surface Mount Pads					

REVISION HISTORY

REV	DESCRIPTION	DATE	APPROVED
	Released from Engineering	10/21/2013	J.S.
1	Updated to new template	4/28/2017	C.E.

NOTES

- 1) All dimensions are in mm unless otherwise noted
- 2) All tolerances are ± 0.1 mm unless otherwise noted
- 3) All parts meet RoHS
- 4) Subject to change or redrawn without notice