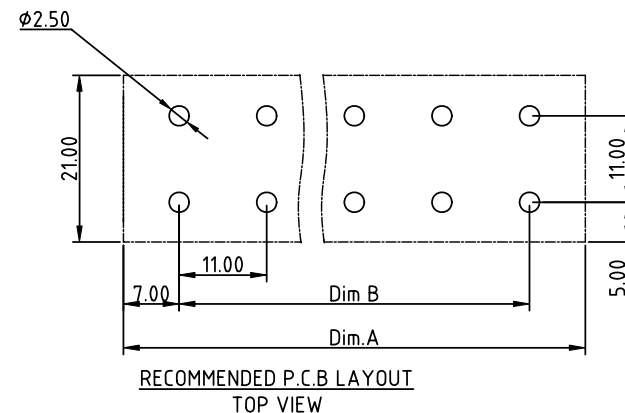
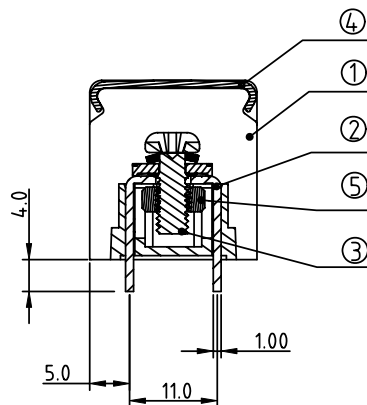
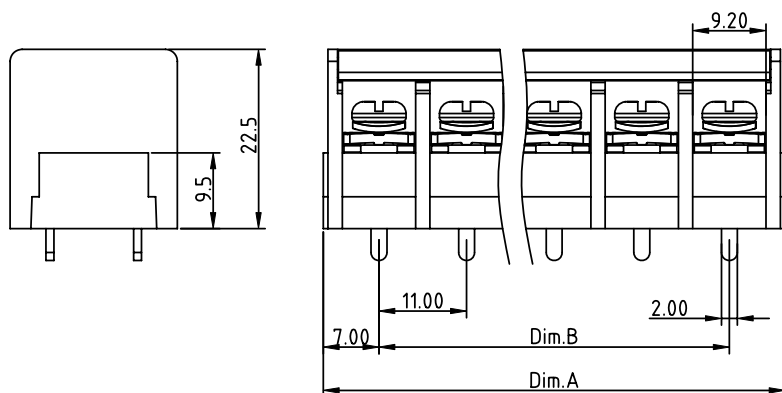
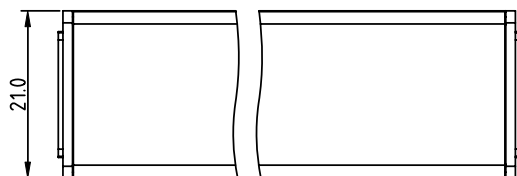


PRODUCT NUMBER	PITCH
YK70Axx2x0J0G	11.00mm



MATERIALS & ELECTRICAL
 RATED VOLTAGE & CURRENT:
 WITHSTAND VOLTAGE:
 INSULATION RESISTANCE:
 OPERATING TEMPERATURE RANG:
 SCREW TORQUE VALUE:

300 V, 40A(B Code)/ 600V, 5A(D Code)
 AC 2500 V/Min
 1000 MΩ OR MORE AT DC 1000 V
 -40 °C ~ +115°C
 16Lb-In.

WIRE RANGE:

18 - 8AWG

1) HOUSING:

THERMOPLASTICS, UL94-V0 BLACK

2) TERMINAL:

BRASS, 1.0t

3) TERMINAL SCREWS:

STEEL, M4.0

4) COVER:

PC

5) TERMINAL NUT:

STEEL, M4.0

APPROVAL:  US

DIMENSION

Dim A	N×11.00±3.0
Dim B	(N-1)×11.0

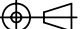

N=Number of poles

Poles	Tolerance
2p-8p	±0.40
9p-16p	±0.50

PART NO.: YK 70Axx 2 x 0 J0G

No. of poles	Plated	RoHS compliant (lead<4%) In copper Alloy
02 2 poles		
03 3 poles		
...		
16 16 poles		

Code	Terminal	Screw	Nut
0	G/F	G/F	G/F
1	G/F	Zinc	Nickel
2	Tin	G/F	G/F
3	Tin	Zinc	Nickel

mat'l. code				surface ASME Y14.5 ✓		tolerance ASME Y14.5		projection 		product family TERMINAL BLOCK							
ltr	ecn	no	dr	date		tolerances unless otherwise specified						title TERMINAL BLOCK					
						linear	angles		MM ↔		BARRIER TYPE, WITH COVER						
							X.±0.5										
							X.X±0.3										
						X'±1"		X.XX±0.1		scale							
						dr	EVAN	LU	061114			dwg no		sheet 1 of 1		size	
						engr	EVAN	LU	061114			YK70Axx2x0J0G				A	
						chr	HANKE	FENG	061114								
						appd	SHI	JUN	061114								
sheet index		revision		A													
sheet		sheet		1													