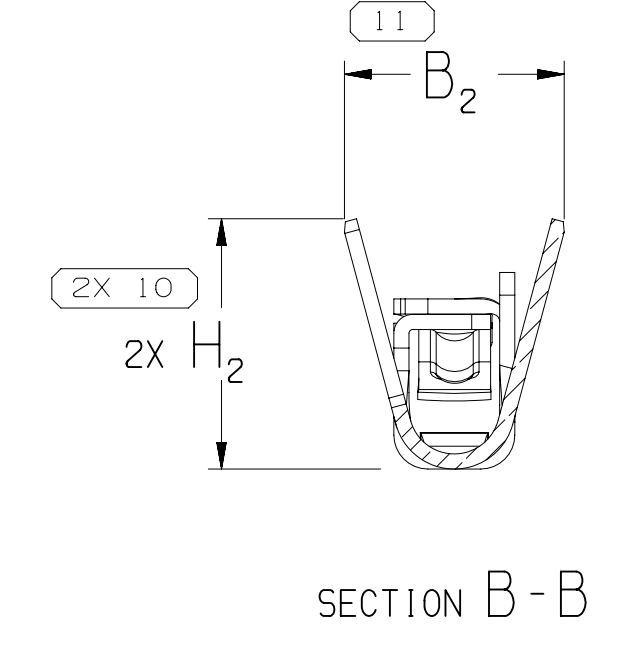
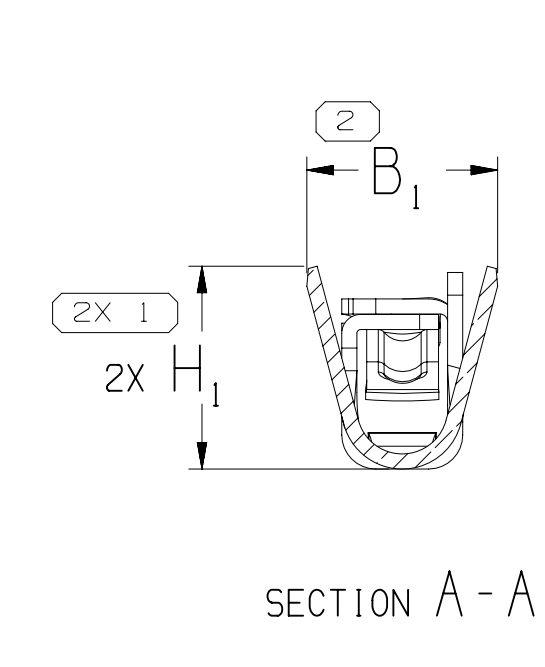
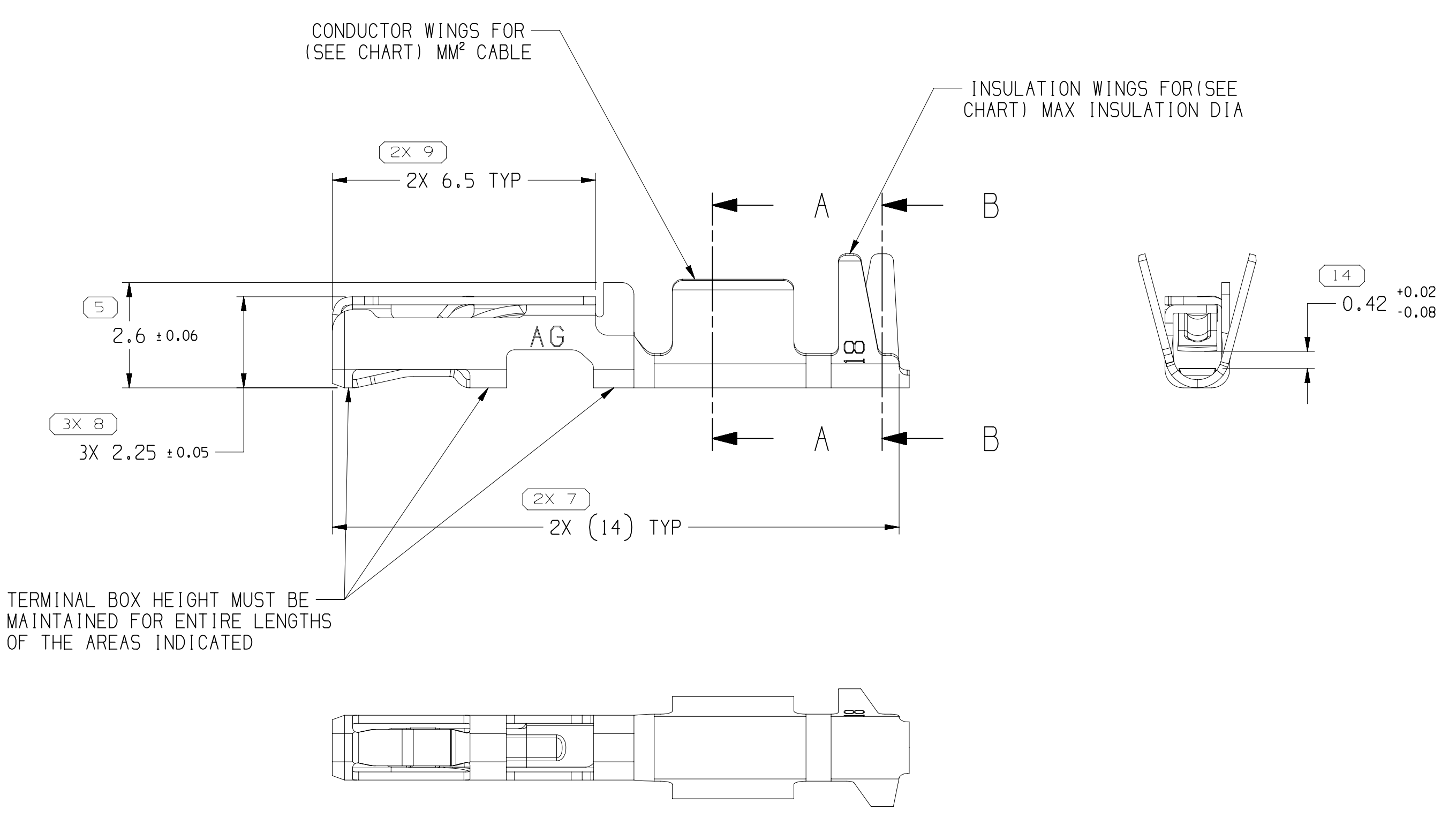
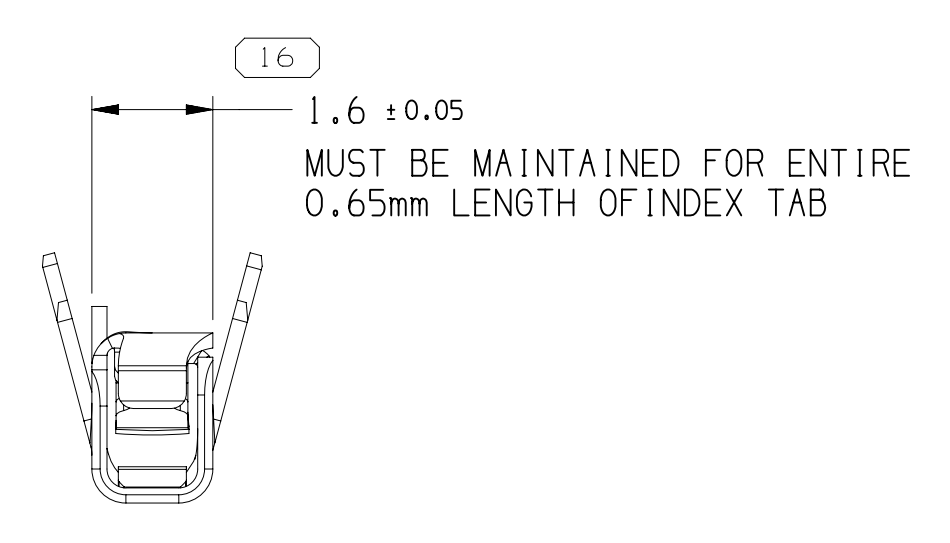
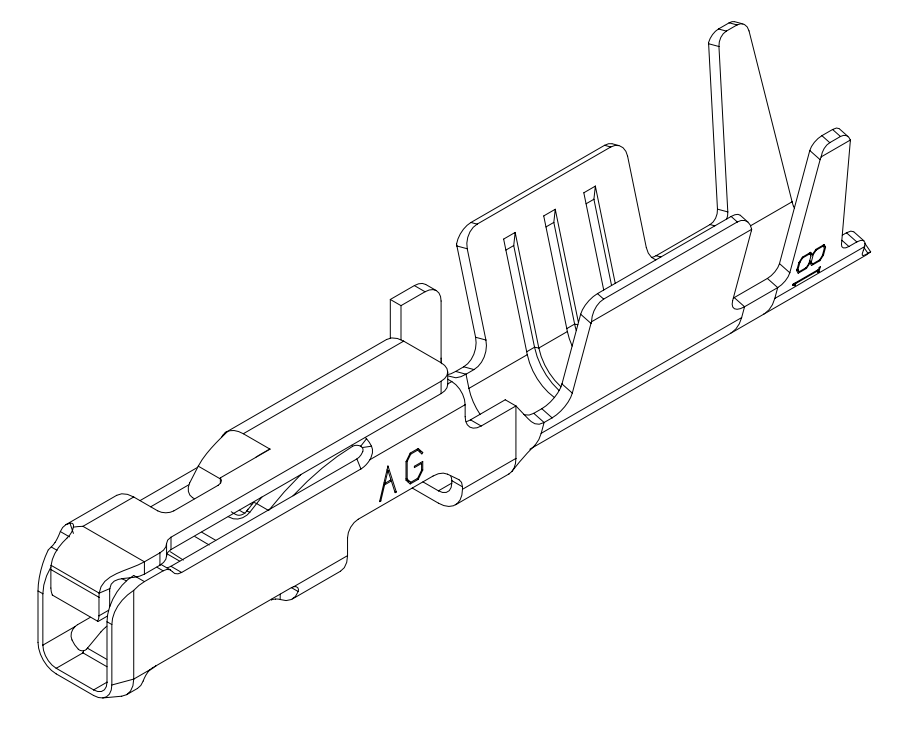
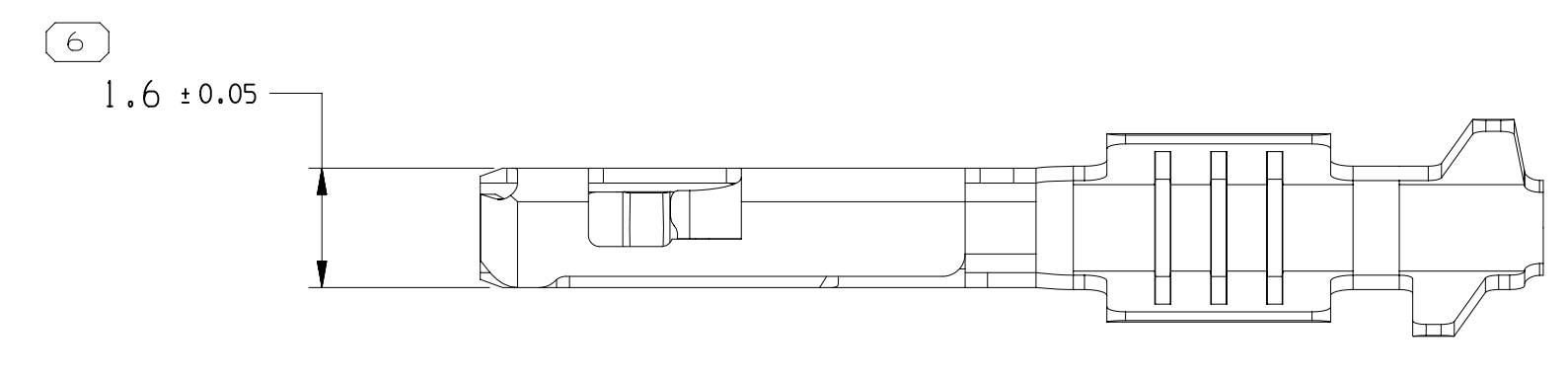


SYMBOL DEFINITION		TOTAL NO OF INSPECTIONS REQUIRED	22
A DIMENSION WITHOUT AN INSPECTION REPORT SYMBOL DOES NOT REQUIRE INSPECTION. IT MAY BE CONTROLLED ON THE INDIVIDUAL COMPONENT DRAWING.		LAST NO. USED	19

DWG STATUS				MISSING SYMBOLS		REVISION HISTORY		AUTH	DR	APVD	APVD
DATE	STG	REV	N/P	CHG	15	17-18					
28.JN.10	R	01	-	-			ALL PARTS - RELEASED (13767043 WAS PE199799, 13767044 WAS PE199780, 13767045 WAS PE199781)	411212	MM	MM	RJB
27.JL.10	R	02	-	-			ALL PARTS - ADDED PLATING TYPE INFORMATION AND REVISED MATERIAL DESCRIPTION	411440	MM	MM	RJB
08OC.10	R	03	-	-			ALL PARTS - REVISED "PLATING TYPE" NOTE	412155	MAB	RJB	RJB
02FE.11	R	04	-	-			13767043 - UPDATED PDM ATTRIBUTES	413237	MAL	MAL	RJB
16MY.14	R	05	-	-			ALL PARTS - MOVED TO TAXI DRAWING 13887649 SHT 01	414274	JAR	JAR	RJB
10SE.14	R	06	-	-			ALL PARTS - RELEASED	427567	APB	APB	RBS
23FE.15	R	07	-	-			33165873 - 33165874 - REVISED CABLE DIAMETER COLUMN CHART	428888	APB	APB	RBS
02.JL.15	R	08	-	-			REVISED TERMINAL LEAD-IN FOR ALL PARTS	430058	JHG	JHG	RBS
10FE.17	R	09	-	-			ALL PARTS - B ₂ ± 0.25 WAS B ₂ ± 0.3	435491	ABH	LES	LES
05AP.19	R	10	-	-			ALL PARTS - DIM #4 WAS 0 ± 2" AND ADDED GDBT PROFILE OF LINE CONTROL FRAME & DATUM [A] OVERALL INFO	441273	DAV	JAA	RBS
07NO.19	R	11	-	-			ALL PARTS - REVISED GRAPHICS	550368	ACC	ACC	AH
14OC.20	R	12	-	-			ALL PARTS - CORRECTED REV LEVEL 02AB WAS 03 PER AUTH 550368	552729	ACC	ACC	RBS
17FE.21	R	13	-	-			33165874 - UPDATED PART AVAILABILITY	553630	AHY	JAA	AGH
24MR.21	R	14	-	-			33165875 - UPDATED PART AVAILABILITY (P/N WAS NOT AVAILABLE)	553878	JAA	JAA	OMS
14.JL.21	R	15	-	-			33165874 - REVISED "CABLE SIZE" & "CABLE DIAMETER" COLUMNS IN CHART;	554625	JGM	JGM	JPS
29MR.22	R	16	-	-			33165875 - UPDATED PART AVAILABILITY (P/N WAS NOT AVAILABLE)	556768	ESG	JAA	JPS
05.JL.22	R	17	-	-			35578199 - UPDATED PART AVAILABILITY (P/N WAS NOT AVAILABLE)	557971	ESG	JAA	AP

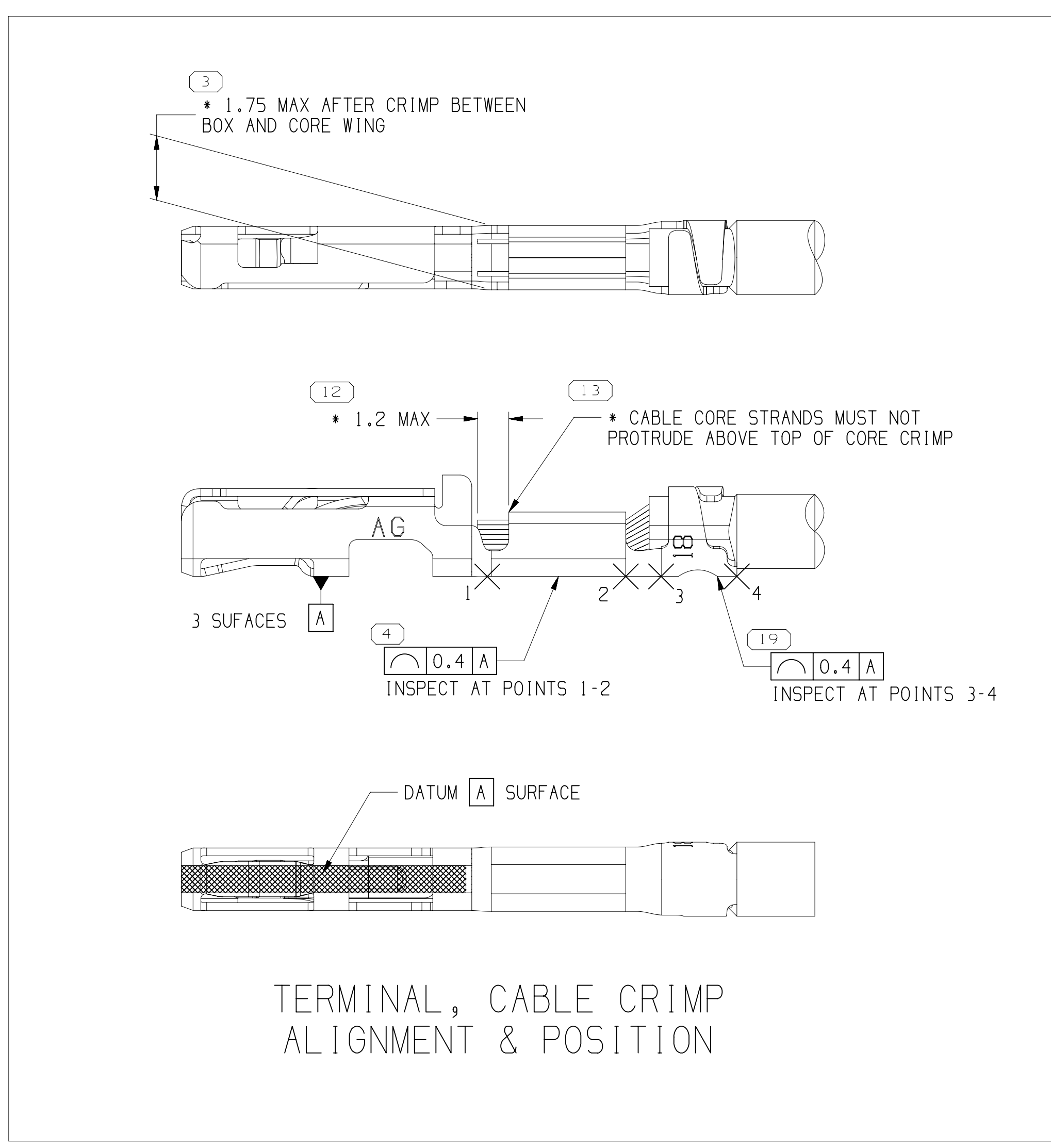


TERMINAL BOX HEIGHT MUST BE MAINTAINED FOR ENTIRE LENGTHS OF THE AREAS INDICATED

NOTES

- UNLESS OTHERWISE SPECIFIED AND/OR INDICATED:
 - DIMENSIONS ARE TO FACE OF VIEW SHOWN AND AUTOMATICALLY ROUNDED BY COMPUTER FOR INSPECTION (SEE MATH MODEL FOR PRECISE DIMENSIONS). FOR ALL OTHER DIMENSIONS NOT SHOWN BUT REQUIRED FOR TOOL BUILD, SEE MATH MODEL FOR PRECISE TOOL PATH DATA.
- RECOMMENDED MATING BLADE THICKNESS 0.64±0.03mm. RECOMMENDED MATING BLADE WIDTH NOT TO EXCEED 1mm AND NO LESS THAN 0.6mm. SEE USCAR EWCAP-001 DRAWING (0.64 PIN) FOR OTHER MATING BLADE REQUIREMENTS.
- MAX. INSULATION CRIMP WIDTH 1.77mm AND HEIGHT 2.3mm FOR CABLE SIZE UP TO 1.9mm O.D.
- MAXIMUM CURRENT CAPACITY IS 7.5 AMPS WITH 0.8mm² COPPER CABLE.
- DENOTES DIMENSIONS MADE AT CUT-OFF AND CRIMP DIE
- SEE TAXI P/N 13887649 FOR SIMILAR TERMINALS WITH DIFFERENT CONNECTOR CAVITY INDEX.
- DO NOT PROBE, TEST OR OTHERWISE CONTACT THE INTERIOR REGION (THE SPRING OR ANY MOVING PART) OF THIS TERMINAL. SEVERE DAMAGE CAN OCCUR, COMPROMISING THE PERFORMANCE OF THE ELECTRICAL INTERFACE.
- PLATING TYPE:
 - REFLOW TIN 1.9-3.3 MICROMETERS THICK OVER NICKEL UNDERPLATE 0.13-0.5 MICROMETERS THICK
 - SILVER 2.0-3.0 MICROMETERS THICK OVER NICKEL UNDERPLATE 0.13-0.51 MICROMETERS THICK
 - MATTE TIN 1.9-7.0 MICROMETERS THICK OVER NICKEL UNDERPLATING 0.13-0.51 MICROMETERS THICK

PLATING TYPE INFORMATION SHOWN ABOVE IS REFERENCE ONLY; PLATING REQUIREMENTS ARE CONTAINED IN APPLICABLE MATERIAL SPECIFICATION



TERMINAL, CABLE CRIMP ALIGNMENT & POSITION

PART NUMBER	REV	N/P	MATERIAL DESCRIPTION	CONTACT AREA PLATING TYPE (SEE NOTE B)	CRIMP AREA PLATING TYPE (SEE NOTE B)	I.D.	CABLE SIZE (mm ²)	CABLE DIAMETER	B ₁ ± 0.15	B ₂ ± 0.25	(H ₁)	(H ₂)
35578199	01	AB	COPPER ALLOY	II	III	22	0.35	1.2 - 1.7	1.85	2.8	1.75	3.17
33165875	03	AB	COPPER ALLOY	II	III	18	0.75 - 0.8	1.7 - 1.9	2.52	2.88	2.68	3.31
33165874	03	AC	COPPER ALLOY	II	III	21	0.5	1.4 - 1.9	2.04	2.8	2.06	3.17
33165873	03	AA	COPPER ALLOY	II	III	25	0.13 - 0.22	0.81 - 1.2	1.54	1.74	1.56	1.77

6 PROCESS SENSITIVE DIMENSION

DIMENSIONS ENCLOSED IN () INDICATE REFERENCE DIMENSIONS AND NO TOLERANCE LIMITS ARE ESTABLISHED.

ORIENTATIONAL RANGE (MM) CHART D

FROM 0 TO 12

TO 12 TO 12

TOLERANCE UNLESS OTHERWISE SPECIFIED

±0.1 ±0.2 ±0.3

ANGULAR TOLERANCE ±2°

THIRD ANGLE PROJECTION

DO NOT SCALE

USE MATH DATA

NX

APTIV

CONNECTION SYSTEMS

WARREN, OH

COPYRIGHT 2010 APTIV. ALL RIGHTS RESERVED.

THIS DRAWING IS THE PROPERTY OF APTIV AND CONTAINS APTIV CONFIDENTIAL INFORMATION. THE REPRODUCTION, DISTRIBUTION AND UTILIZATION OF THIS DOCUMENT OR ITS RELATED CAD DATA, AS WELL AS COMMUNICATION OF ANY CONTENT TO OTHERS, WITHOUT EXPRESS AUTHORIZATION, IS PROHIBITED.

DATE: 28.JN.10

DR: M McCALL

APVD: M McCALL

APVD3: RAY J. BLASKO

APVD4:

APVD5:

SUBSTANCES OF CONCERN AND RECYCLED CONTENT PER APTIV 10949001

DRAWING NUMBER: 13767042

SIZE: A0

SCALE: 10:1

FRAME NO: 1

SHEET NO: 2

REV: R

NOFF: 17