



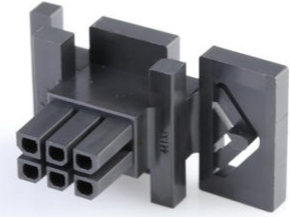
Part Number : [441330600](#)

Product Description : Micro-Fit BMI Receptacle Housing, Dual Row, Panel Mount, 6 Circuits, Polyester, UL 94V-0

Series Number : 44133

Status : Active

Product Category : Connector Housings



Documents and Resources

Drawings

[441330600 sd.pdf](#)

[PK-44133-002-001.pdf](#)

3D Models and Design Files

[STEP AP242](#)

[SOLIDWORKS](#)

[Creo](#)

Specifications

[443000001-AS-000.pdf](#)

[444280001-AS-000.pdf](#)

[PS-44300-001-001.pdf](#)

[TS-43045-001-001.pdf](#)


[TS-43045-002-001.pdf](#)

[447640002-TS-000.pdf](#)

[TS-46235-001-001.pdf](#)

Product Environment Compliance

Compliance

GADSL/IMDS	Not Relevant
China RoHS	 per SJ/T 11365-2006
EU ELV	Not Relevant
Low-Halogen Status	Not Low-Halogen per IEC

	61249-2-21
REACH SVHC	Not Contained per D(2025)7771-DC (04 Feb 2026)
EU RoHS	Compliant per EU 2015/863

Compliance Statements

- EU RoHS
- REACH SVHC
- Low-Halogen

Industry Documents

- IPC 1752A Class C
- IPC 1752A Class D
- Molex Product Compliance Declaration
- IEC-62474
- chemSHERPA (xml)

Substances of Interest

- PFAS

EU RoHS Certificate of Compliance

Additional Product Compliance Information

Part Details

General

Status	Active
Category	Connector Housings
Series	44133
Description	Micro-Fit BMI Receptacle Housing, Dual Row, Panel Mount, 6 Circuits, Polyester, UL 94V-0
Application	Power, Wire-to-Board, Wire-to-Wire
Product Name	Micro-Fit BMI
UPC	800754807968

Agency

CSA	LR19980
UL	E29179

Physical

Circuits (maximum)	6
Color - Resin	Black
Gender	Receptacle
Glow-Wire Capable	No
Lock to Mating Part	No
Material - Resin	Polyester
Net Weight	1.982/g
Number of Rows	2
Packaging Type	Tray
Panel Mount	Yes
Pitch - Mating Interface	3.00mm
Polarized to Mating Part	Yes
Stackable	No
Temperature Range - Operating	-40° to +105°C

Solder Process Data

Lead-Free Process Capability	N/A
------------------------------	-----

Mates With / Use With

Mates with Part(s)

Description	Part Number
Micro-Fit BMI Plug Housing, Dual Row, Panel Mount, 6 Circuits, Black	<u>443000600</u>
Micro-Fit BMI Right-Angle Dual Row Headers	<u>44428</u>
Micro-Fit BMI Vertical Dual Row Headers	<u>44432</u>
Micro-Fit BMI CPI Vertical Dual Row Headers	<u>45280</u>

Use with Part(s)

Description	Part Number
Pre-Crimped Lead Micro-Fit 3.0 Female-to-Micro-Fit 3.0 Female,	<u>797580002</u>

Tin (Sn) Plating, 150.00mm Length, 20 AWG, Black	
Pre-Crimped Lead Micro-Fit 3.0 Female-to-Micro-Fit 3.0 Female, Gold (Au) Plating, 150.00mm Length, 20 AWG, Black	<u>797580004</u>
Pre-Crimped Lead Micro-Fit 3.0 Female-to-Micro-Fit 3.0 Female, Tin (Sn) Plating, 300.00mm Length, 20 AWG, Black	<u>797580010</u>
Pre-Crimped Lead Micro-Fit 3.0 Female-to-Micro-Fit 3.0 Female, Gold (Au) Plating, 300.00mm Length, 20 AWG, Black	<u>797580012</u>
Micro-Fit 3.0 Female Crimp Terminals	<u>43030</u>
Micro-Fit 3.0 Female Crimp Terminals with Lubricant	<u>45773</u>
Micro-Fit Reduced Mating Force Female Crimp Terminals	<u>46235</u>
Pre-Crimped Lead Micro-Fit 3.0 Female-to-Micro-Fit 3.0 Female	<u>214760</u>
Pre-Crimped Lead Micro-Fit 3.0 Female-to-Pigtail	<u>214761</u>

This document was generated on May 23, 2026