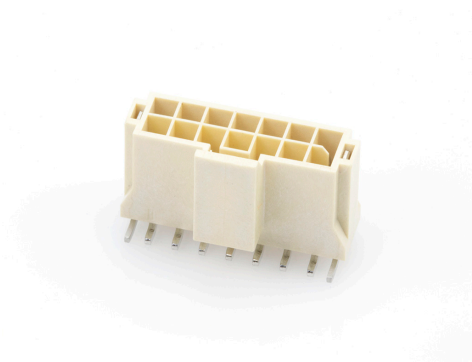




**Part Number :** [1054292114](#)  
**Product Description :** Nano-Fit Vertical Header, Surface Mount, 2.50mm Pitch, Dual Row, 14 Circuits, 0.76µm Tin (Sn) Plating, Natural, Glow-Wire Capable  
**Series Number :** 105429  
**Status :** Active  
**Product Category :** PCB Headers and Receptacles



## Documents & Resources

### Drawings

- [1054292114\\_sd.pdf](#)
- [1054291000-PK-000.pdf](#)

### 3D Models and Design Files

- [1054292114\\_stp.zip](#)

### Specifications

- [AS-105405-001-001.pdf](#)
- [1054051000-PS-CH-000.pdf](#)
- [1054051000-PS-ES-000.pdf](#)
- [1054051000-PS-SK-000.pdf](#)
- [PS-105405-001-001.pdf](#)
- [1054050000-TS-000.pdf](#)

## Product Environment Compliance

### Compliance

GADSL/IMDS	Compliant with Exemption 44; 34; 33
China RoHS	
EU ELV	Not Relevant
Low-Halogen Status	Low-Halogen per IEC 61249-2-21
REACH SVHC	Not Contained per D(2024)7663-DC (21 Jan 2025)
EU RoHS	Compliant per EU 2015/863

### [Multiple Part Product Compliance Statements](#)

- Eu RoHS
- REACH SVHC
- Low-Halogen

#### Multiple Part Industry Compliance Documents

- IPC 1752A Class C
- IPC 1752A Class D
- Molex Product Compliance Declaration
- IEC-62474
- chemSHERPA (xml)

#### EU RoHS Certificate of Compliance

---

## Part Details

### General

Status	Active
Category	PCB Headers and Receptacles
Series	105429
Description	Nano-Fit Vertical Header, Surface Mount, 2.50mm Pitch, Dual Row, 14 Circuits, 0.76µm Tin (Sn) Plating, Natural, Glow-Wire Capable
Application	Power, Wire-to-Board
Component Type	PCB Header
Product Name	Nano-Fit
UPC	191130013173

### Agency

UL	E29179
----	--------

### Electrical

Current - Maximum per Contact	7.0A
Voltage - Maximum	250V AC (RMS)/DC

### Physical

Breakaway	No
Circuits (Loaded)	14
Circuits (maximum)	14
Color - Resin	Natural

Durability (mating cycles max)	25
Glow-Wire Capable	Yes
Keying to Mating Part	Yes
Lock to Mating Part	Yes
Material - Metal	Brass
Material - Plating Mating	Tin
Material - Plating Termination	Tin
Material - Resin	Liquid Crystal Polymer
Net Weight	1.750/g
Number of Rows	2
Orientation	Vertical
Packaging Type	Embossed Tape on Reel
PCB Locator	No
PCB Thickness - Recommended	1.60mm
Pitch - Mating Interface	2.50mm
Pitch - Termination Interface	2.50mm
Plating min - Mating	0.762µm
Plating min - Termination	0.762µm
Polarized to Mating Part	Yes
Polarized to PCB	No
Temperature Range - Operating	-40° to +125°C
Termination Interface Style	Surface Mount

---

## Mates With / Use With

### Mates with Part(s)

Description	Part Number
Nano-Fit Receptacle Housing, TPA Capable, 2.50mm Pitch, Dual Row, 14 Circuits, Natural, Glow-Wire Capable	<u>1053082214</u>
Nano-Fit Receptacle Housing, TPA Capable, 2.50mm Pitch, Dual Row, 14 Circuits, Natural, Glow-Wire Capable, for UL 1569/1007 Wire	<u>2263622214</u>

---



---

This document was generated on Apr 26, 2025