

LOC	DIST	REVISIONS 変更				
		P	LTR	DESCRIPTION	DATE	DWN APVD
J	—		H3	REVISED PER ECO-11-005030	30MAR11	RK HMR
			H4	REVISED PER ECR-18-002978	02JUL2021	BDA AA

△1	OBSOLETE	215032-1	<del>2-170823-9</del>	SEE 7 OF 13
		246225	2-170823-8	SEE 2 OF 13
△1	OBSOLETE	238035-3	<del>2-170823-7</del>	SEE 10 OF 13
	OBSOLETE	235818	2-170823-5	SEE 12 OF 13
	OBSOLETE	234018-4	<del>2-170823-4</del>	SEE 13 OF 13
	OBSOLETE	234025-1	2-170823-3	
	△1 OBSOLETE	234030-1	<del>2-170823-2</del>	SEE 9 OF 13
	OBSOLETE	230032-1	<del>2-170823-1</del>	
		238035-2	2-170823-0	SEE 10 OF 13
		238035-1	1-170823-9	
		238032-1	1-170823-8	
△1	OBSOLETE	238020-1	<del>1-170823-7</del>	
		238038	1-170823-6	SEE 12 OF 13
		238035	1-170823-5	
		235825-1	1-170823-4	SEE 13 OF 13
		235822	1-170823-3	
		234018-2	1-170823-2	
		234018-1	1-170823-1	
		234030	1-170823-0	SEE 10 OF 13
		234018	170823-9	
		234016	170823-8	
△1	OBSOLETE	238060	<del>170823-7</del>	SEE 13 OF 13
		238048	170823-6	
		238032	170823-4	
		238020	170823-3	
		238025	170823-2	SEE 10 OF 13
		234025	170823-1	
		SHINAGAWA SHOKO PN	PN	REMARK

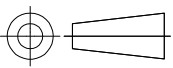
		24623204	5-170823-8	SEE 2 OF 13
	△1 OBSOLETE	248550	<del>5-170823-7</del>	SEE 3 OF 13
		246230	<del>5-170823-6</del>	SEE 2 OF 13
		234025-4	<del>5-170823-4</del>	SEE 13 OF 13
	OBSOLETE	234028	5-170823-3	
	OBSOLETE	224222	5-170823-1	SEE 8 OF 13
△1	OBSOLETE	246232-1	<del>5-170823-0</del>	SEE 2 OF 13
	OBSOLETE	238040	4-170823-9	SEE 10 OF 13
	OBSOLETE	238025-2	4-170823-8	
	OBSOLETE	238025-1	4-170823-7	SEE 13 OF 13
△1	OBSOLETE	234025-3	<del>4-170823-6</del>	
	OBSOLETE	234025-2	4-170823-5	SEE 3 OF 13
	OBSOLETE	248525	4-170823-4	
△1	OBSOLETE	215025W	<del>4-170823-3</del>	SEE 6 OF 13
	OBSOLETE	236525W	4-170823-2	SEE 5 OF 13
		236525	4-170823-1	SEE 11 OF 13
	OBSOLETE	234025W	4-170823-0	SEE 5 OF 13
		246232	3-170823-8	SEE 2 OF 13
	OBSOLETE	230025W	3-170823-7	SEE 4 OF 13
	OBSOLETE	238025W	3-170823-6	SEE 5 OF 13
	△1 OBSOLETE	215028	<del>3-170823-5</del>	SEE 7 OF 13
		224228	<del>3-170823-4</del>	SEE 8 OF 13
		215032W	<del>3-170823-3</del>	SEE 6 OF 13
	OBSOLETE	238032-3	3-170823-2	SEE 10 OF 13
	OBSOLETE	238032-2	3-170823-1	
		SHINAGAWA SHOKO PN	PN	REMARK

X-170892-X	SEE 170892
X-170893-X	SEE 170893
X-170887-X	SEE 170887
X-170889-X	SEE 170889
X-170888-X	SEE 170888
X-170890-X	SEE 170890
X-170891-X	SEE 170891
PN	REMARK

△1 OBSOLETE PARTS: OBSOLETE CIS STREAMLINING PER D.RENAUD/D.SINISI

THIS DRAWING IS A CONTROLLED DOCUMENT.

DIMENSIONS:  
単位： 耗  
mm



TOLERANCES UNLESS OTHERWISE SPECIFIED:  
一般公差

0 PLC ± —  
1 PLC ± —  
2 PLC ± —  
3 PLC ± —  
4 PLC ± —  
ANGLES ± —  
FINISH 仕上

MATERIAL  
材料

—

DWN  
A. YAMAGUCHI  
31AUG00

CHK  
D. MATSUURA  
31AUG00


APVD  
K. BETSUI  
31AUG00

PRODUCT SPEC  
製品規格

APPLICATION SPEC  
取付適用規格

WEIGHT  
—

CUSTOMER DRAWING

 TE Connectivity

NAME  
名称

INSULATION SLEEVE

SIZE  
A3

CAGE CODE  
00779

DRAWING NO  
番号  
C-170823

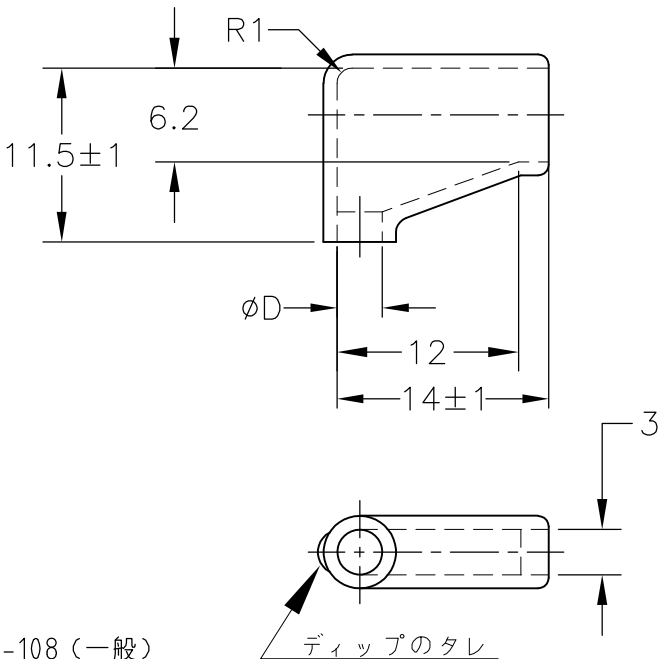
RESTRICTED TO  
—

SCALE  
尺度  
1:1

SHEET  
1 OF 13

REV  
H4

LOC	DIST	REVISIONS 変更				
		P	LTR	DESCRIPTION		DATE
J	—			SEE SHEET 1		—



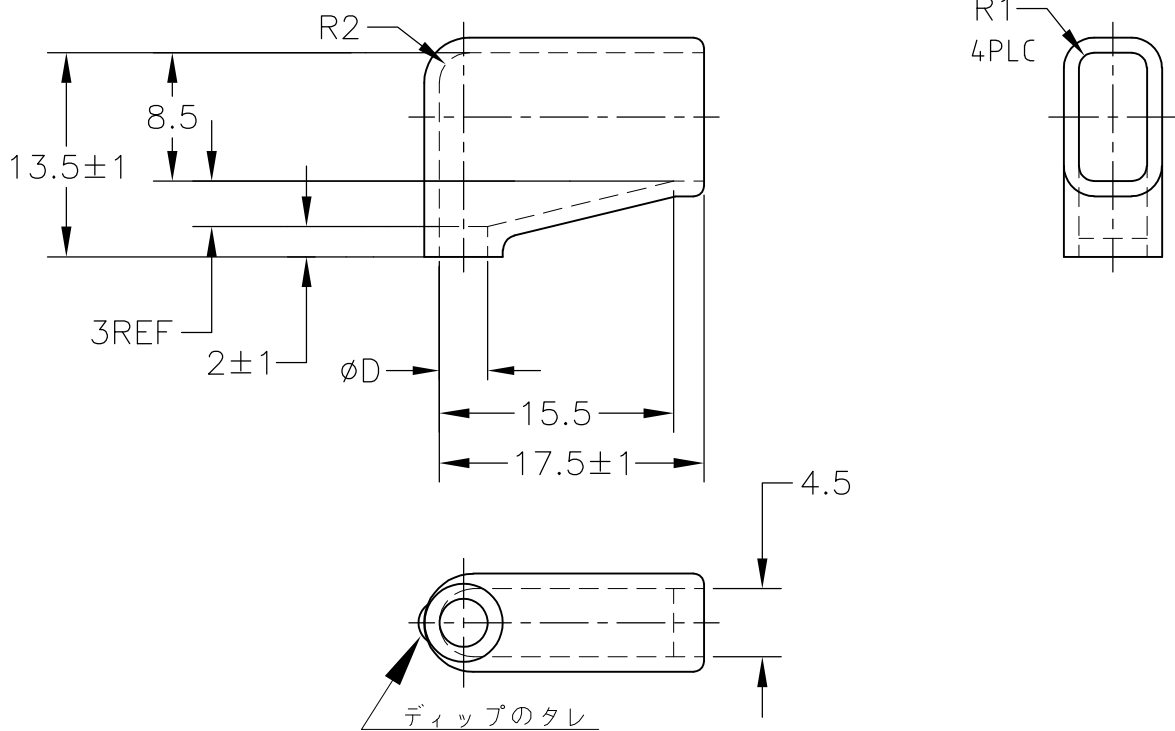
1. 材質：SS-108（一般）  
2. 一般公差： $\pm 0.5$   
3. 適用製品規格は無し  
△ 品川商工発行のカatalogと本図で寸法が異なる場合は本図を優先する。  
5. この製品の名称は旗型コネクトスリーブ187シリーズ

1. MATERIAL:SS-108(GENERAL)  
2. GENERAL TOLERANCE:  $\pm 0.5$   
3. APPLICABLE PRODUCT SPEC NOT AVAILABLE  
△ IN THE EVENT OF CONFLICT BETWEEN THE REQUIREMENTS OF THIS CUSTOMER DRAWING AND THE SHINAGAWA SHOKO CO LTD CATALOG THIS CUSTOMER DRAWING SHALL TAKE PRECEDENCE  
5. THIS PRODUCT NAME FLAG TYPE CONNECT SLEEVE FOR 187 SERIES  
△ OBSOLETE PARTS: OBSOLETE CIS STREAMLINING PER D.RENAUD/D.SINISI

<div>△ OBSOLETE</div>	BLACK	<div>1<sup>+0.3</sup><sub>-0.2</sub></div>	3.2	24623204	5-170823-8
	CLEAR		3	246230	<del>5-170823-6</del>
			3.2	246232-1	<del>5-170823-0</del>
			3.2	246232	3-170823-8
			2.5	246225	2-170823-8
	COLOR	THICKNESS	φ D	△ SHINAGAWA SHOKO PN	PART NUMBER

DIMENSIONS: 単位： 耗 mm	DWN A. YAMAGUCHI 31AUG00	MATERIAL 材料 —	FINISH 仕上 —
	CHK D. MATSUURA 31AUG00	<div> TE Connectivity</div>	
TOLERANCES UNLESS OTHERWISE SPECIFIED: 一般公差	APVD K. BETSUI 31AUG00		
	PRODUCT SPEC 製品規格 —	NAME 名称 INSULATION SLEEVE	
0 PLC ± — 1 PLC ± — 2 PLC ± — 3 PLC ± — 4 PLC ± — ANGLES ± —	APPLICATION SPEC 取付適用規格 —	SIZE A4	CAGE CODE 00779
	WEIGHT —	DRAWING NO 番号 C-170823	RESTRICTED TO —
	CUSTOMER DRAWING		SCALE 尺度 2:1
		SHEET 2 OF 13	REV H4


LOC	DIST	REVISIONS 変更				
J	—	P	LTR	DESCRIPTION	DATE	APVD
		—		SEE SHEET 1	—	—



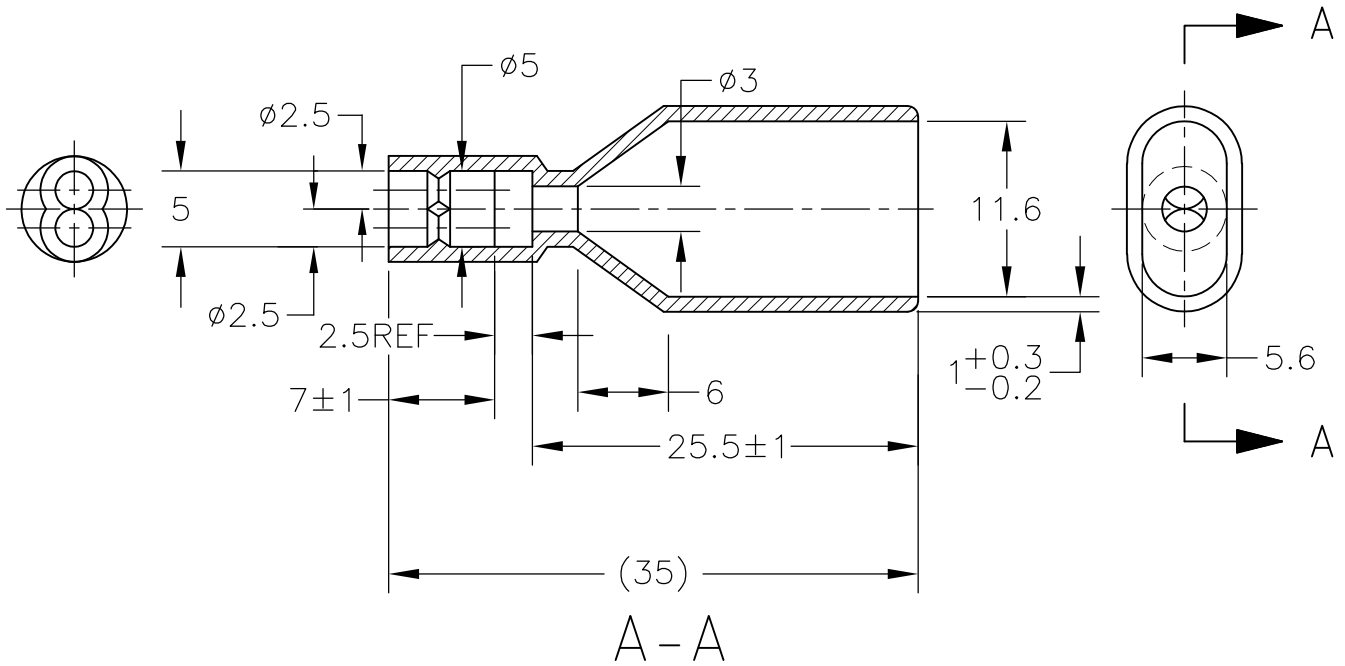
1. 材質: SS-108 (一般)
2. 一般公差:  $\pm 0.5$
3. 適用製品規格は無し
4. 品川商工発行のカタログと本図で寸法が異なる場合は本図を優先する。
5. この製品の名称は旗型コネクトスリーブ 250シリーズ

1. MATERIAL: SS-108 (GENERAL)
2. GENERAL TOLERANCE:  $\pm 0.5$
3. APPLICABLE PRODUCT SPEC NOT AVAILABLE
4. IN THE EVENT OF CONFLICT BETWEEN THE REQUIREMENTS OF THIS CUSTOMER DRAWING AND THE SHINAGAWA SHOKO CO LTD CATALOG THIS CUSTOMER DRAWING SHALL TAKE PRECEDENCE
5. THIS PRODUCT NAME FLAG TYPE CONNECT SLEEVE FOR 250 SERIES
6. OBSOLETE PARTS: OBSOLETE CIS STREAMLINING PER D.RENAUD/D.SINISI

6	OBSOLETE	CLEAR	1 $\pm$ 0.3	5	248550	5-170823-7
	OBSOLETE			2.5	248525	4-170823-4
	COLOR	THICKNESS	$\phi$ D	SHINAGAWA SHOKO PN PART NUMBER		

DIMENSIONS: 単位: 耗 mm	DWN A. YAMAGUCHI 31AUG00	MATERIAL 材料 —	FINISH 仕上 —
	CHK D. MATSUURA 31AUG00	 TE Connectivity	
TOLERANCES UNLESS OTHERWISE SPECIFIED: 一般公差	APVD K. BETSUI 31AUG00		
	PRODUCT SPEC 製品規格 —	NAME 名称 INSULATION SLEEVE	
0 PLC $\pm$ — 1 PLC $\pm$ — 2 PLC $\pm$ — 3 PLC $\pm$ — 4 PLC $\pm$ — ANGLES $\pm$ —	APPLICATION SPEC 取付適用規格 —	SIZE A4	CAGE CODE 00779
WEIGHT —		DRAWING NO 番号 C-170823	RESTRICTED TO —
CUSTOMER DRAWING		SCALE 尺度 2:1	SHEET 3 OF 13
		REV H4	

LOC	DIST	REVISIONS 変更							
		P	LTR	DESCRIPTION			DATE	DWN	APVD
J	—		—	SEE SHEET 1			—	—	—



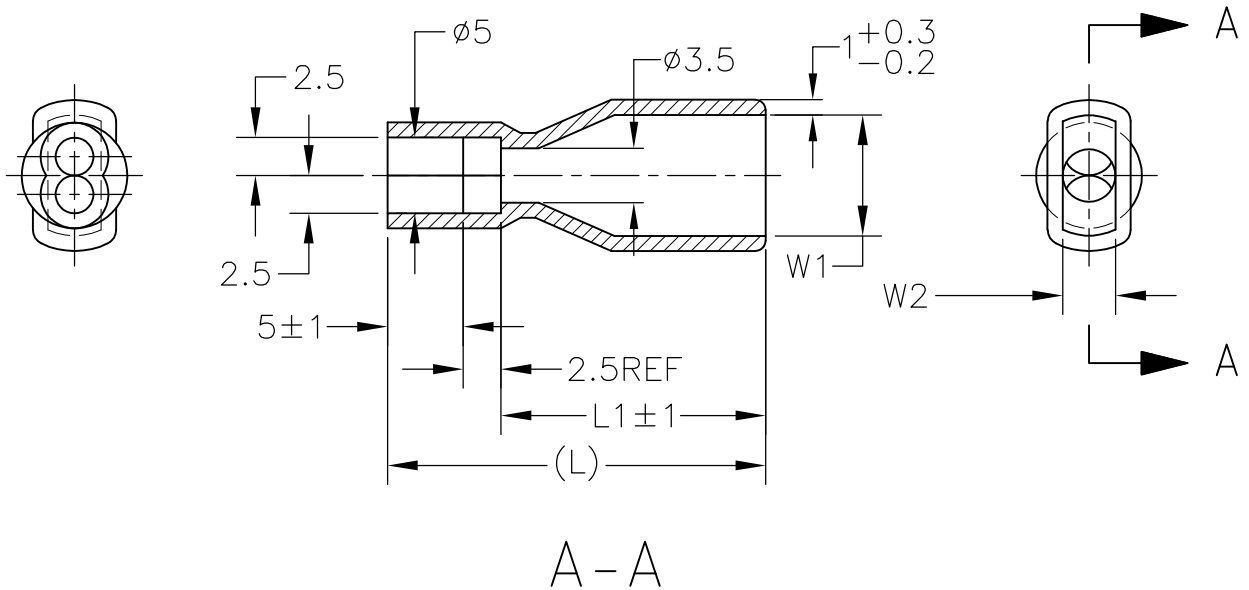
1. 材質：SS-108（一般）
2. 一般公差：±0.5
3. 適用製品規格は無し
4. 品川商工発行のカタログと本図で寸法が異なる場合は本図を優先する。
5. この製品の名称はコネクタスリーブ AMP00シリーズ

1. MATERIAL:SS-108(GENERAL)
2. GENERAL TOLERANCE: ±0.5
3. APPLICABLE PRODUCT SPEC NOT AVAILABLE
4. IN THE EVENT OF CONFLICT BETWEEN THE REQUIREMENTS OF THIS CUSTOMER DRAWING AND THE SHINAGAWA SHOKO CO LTD CATALOG THIS CUSTOMER DRAWING SHALL TAKE PRECEDENCE
5. THIS PRODUCT NAME FLAG TYPE CONNECT SLEEVE AMP00 SERIES

OBSOLETE	CLEAR	230025W	3-170823-7
	COLOR	SHINAGAWA SHOKO PN	PART NUMBER

DIMENSIONS: 単位： 耗 mm	DWN A. YAMAGUCHI 31AUG00	MATERIAL 材料	FINISH 仕上
	CHK D. MATSUURA 31AUG00	—	
TOLERANCES UNLESS OTHERWISE SPECIFIED: 一般公差	APVD K. BETSUI 31AUG00	TE Connectivity	
	PRODUCT SPEC 製品規格	INSULATION SLEEVE	
0 PLC ± — 1 PLC ± — 2 PLC ± — 3 PLC ± — 4 PLC ± — ANGLES ± —	APPLICATION SPEC 取付適用規格	NAME 名称	
	WEIGHT	SIZE A4	CAGE CODE 00779
CUSTOMER DRAWING		DRAWING NO 番号 C-170823	RESTRICTED TO —
		SCALE 尺度 2:1	SHEET 4 OF 13
		REV H4	


LOC	DIST	REVISIONS					
		P	LTR	DESCRIPTION	DATE	DWN	APVD
J	—		—	SEE SHEET 1	—	—	—



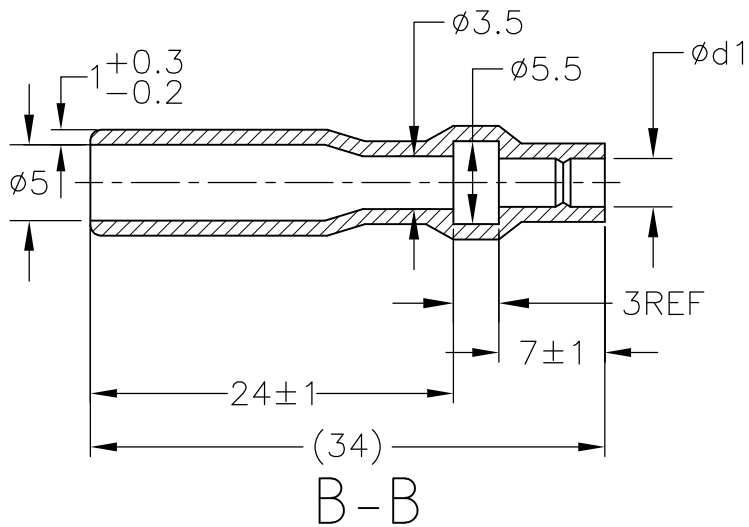
1. 材質：SS-108（一般）
2. 一般公差：±0.5
3. 適用製品規格は無し
- ④ 品川商工発行のカタログと本図で寸法が異なる場合は本図を優先する。
5. この製品の名称はコネクタスリーブ AMP00 シリーズ

1. MATERIAL:SS-108(GENERAL)
2. GENERAL TOLERANCE: ±0.5
3. APPLICABLE PRODUCT SPEC NOT AVAILABLE
- ④ IN THE EVENT OF CONFLICT BETWEEN THE REQUIREMENTS OF THIS CUSTOMER DRAWING AND THE SHINAGAWA SHOKO CO LTD CATALOG THIS CUSTOMER DRAWING SHALL TAKE PRECEDENCE
5. THIS PRODUCT NAME FLAG TYPE CONNECT SLEEVE AMP00 SERIES

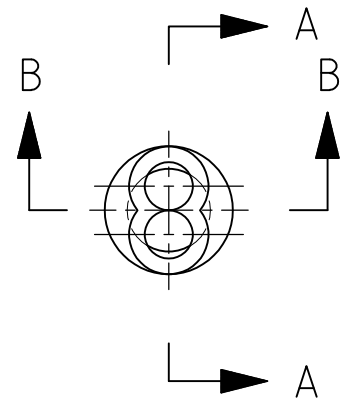
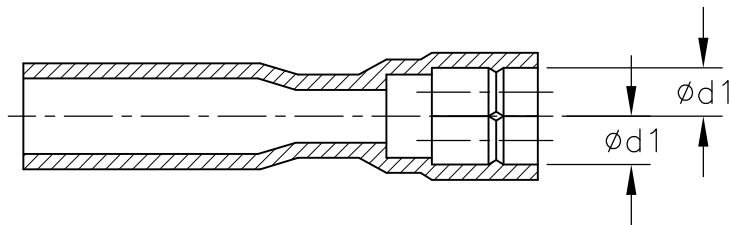
OBSOLETE	CLEAR	23	15.5	3	6.5	236525W	4-170823-2
OBSOLETE		21	13.5		4	234025W	4-170823-0
OBSOLETE		25	17.5	3.5	8	238025W	3-170823-6
	COLOR	L	L1	W2	W1	△ SHINAGAWA SHOKO PN	PART NUMBER

DIMENSIONS: 単位： 耗 mm	DWN A. YAMAGUCHI 31AUG00	MATERIAL 材料 —	FINISH 仕上 —
	CHK D. MATSUURA 31AUG00	 TE Connectivity	
TOLERANCES UNLESS OTHERWISE SPECIFIED: 一般公差	APVD K. BETSUI 31AUG00	NAME 名称 INSULATION SLEEVE	
	PRODUCT SPEC 製品規格 —	SIZE A4	CAGE CODE 00779
0 PLC ± — 1 PLC ± — 2 PLC ± — 3 PLC ± — 4 PLC ± — ANGLES ± —	APPLICATION SPEC 取付適用規格 —	DRAWING NO 番号 C-170823	RESTRICTED TO —
WEIGHT —		SCALE 尺度 2:1	
CUSTOMER DRAWING		SHEET 5 OF 13	REV H4

LOC	DIST	REVISIONS					
		P	LTR	DESCRIPTION	DATE	DWN	APVD
J	—		—	SEE SHEET 1	—	—	—



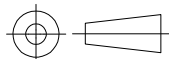
ROTATED CW 90°


$$A - A$$

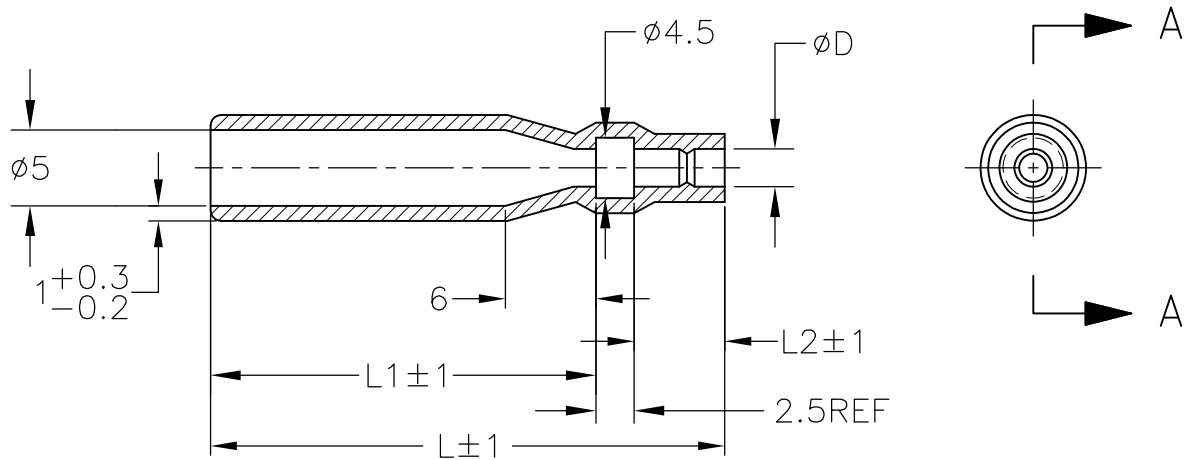
1. 材質：SS-108（一般）
2. 一般公差：±0.5
3. 適用製品規格は無し
4. 品川商工発行のカタログと本図で寸法が異なる場合は本図を優先する。
5. この製品の名称はコネクトスリーブ 5DIAシリーズシュワープラグ リセプタクル

1. MATERIAL:SS-108(GENERAL)
2. GENERAL TOLERANCE:  $\pm 0.5$
3. APPLICABLE PRODUCT SPEC NOT AVAILABLE
- △4. IN THE EVENT OF CONFLICT BETWEEN THE REQUIREMENTS OF THIS  
CUSTOMER DRAWING AND THE SHINAGAWA SHOKO CO LTD CATALOG THIS  
CUSTOMER DRAWING SHALL TAKE PRECEDENCE
5. THIS PRODUCT NAME : CONNECT SLEEVE 5DIA SERIES SHUR PLUG RECEPTACLE
- △6. OBSOLETE PARTS: OBSOLETE CIS STREAMLINING PER D.RENAUD/D.SINISI

 OBSOLETE	CLEAR	2.5	215025W	<del>4-170823-3</del>
		3.2	215032W	<del>3-170823-3</del>
	COLOR	φ d1	 SHINAGAWA SHOKO PN	PART NUMBER

DIMENSIONS: 単位： 耗 mm		DWN A. YAMAGUCHI 31AUG00		MATERIAL 材料 —		FINISH 仕上 —					
TOLERANCES UNLESS OTHERWISE SPECIFIED: 一般公差  0 PLC ± — 1 PLC ± — 2 PLC ± — 3 PLC ± — 4 PLC ± — ANGLES ± —		CHK D. MATSUURA 31AUG00		<div>TE</div> TE Connectivity							
		APVD K. BETSUI 31AUG00									
		PRODUCT SPEC 製品規格 —		NAME 名称 INSULATION SLEEVE							
		APPLICATION SPEC 取付適用規格 —									
		WEIGHT —		SIZE A4		CAGE CODE 00779		DRAWING NO 番号 C-170823		RESTRICTED TO —	
		CUSTOMER DRAWING						SCALE 尺度 2:1		SHEET 6 of 13	

LOC	DIST	REVISIONS 変更					
		P	LTR	DESCRIPTION	DATE	DWN	APVD
J	—		—	SEE SHEET 1	—	—	—



A-A

1. 材質：SS-108（一般）

2. 一般公差：±0.5

3. 適用製品規格は無し

△ 品川商工発行のカatalogと本図で寸法が異なる場合は本図を優先する。

5. この製品の名称はコネクタスリーブ 5DIA シリーズ シュワープラグリセプタクル

1. MATERIAL:SS-108(GENERAL)

2. GENERAL TOLERANCE: ±0.5

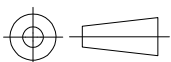
3. APPLICABLE PRODUCT SPEC NOT AVAILABLE

△ IN THE EVENT OF CONFLICT BETWEEN THE REQUIREMENTS OF THIS CUSTOMER DRAWING AND THE SHINAGAWA SHOKO CO LTD CATALOG THIS CUSTOMER DRAWING SHALL TAKE PRECEDENCE

5. THIS PRODUCT NAME FLAG TYPE CONNECT SLEEVE 5DIA SERIES SHUR PLUG RECEPTACLE

△ OBSOLETE PARTS: OBSOLETE CIS STREAMLINING PER D.RENAUD/D.SINISI

△ OBSOLETE	CLEAR	33	6	24.5	2.8	215028	<del>3-170823-5</del>
		47	7	37.5	3.2	215032-1	<del>2-170823-9</del>
	COLOR	L	L2	L1	φD	△ SHINAGAWA SHOKO PN	PART NUMBER

DIMENSIONS:  
単位： 耗  
mmTOLERANCES UNLESS  
OTHERWISE SPECIFIED:  
一般公差0 PLC ± —  
1 PLC ± —  
2 PLC ± —  
3 PLC ± —  
4 PLC ± —  
ANGLES ± —DWN A. YAMAGUCHI 31AUG00  
CHK D. MATSUURA 31AUG00  
APVD K. BETSUI 31AUG00PRODUCT SPEC  
製品規格APPLICATION SPEC  
取付適用規格

WEIGHT

MATERIAL  
材料FINISH  
仕上

TE Connectivity

NAME  
名称

INSULATION SLEEVE

SIZE

CAGE CODE

DRAWING NO  
番号

A4 00779 C-170823

RESTRICTED TO

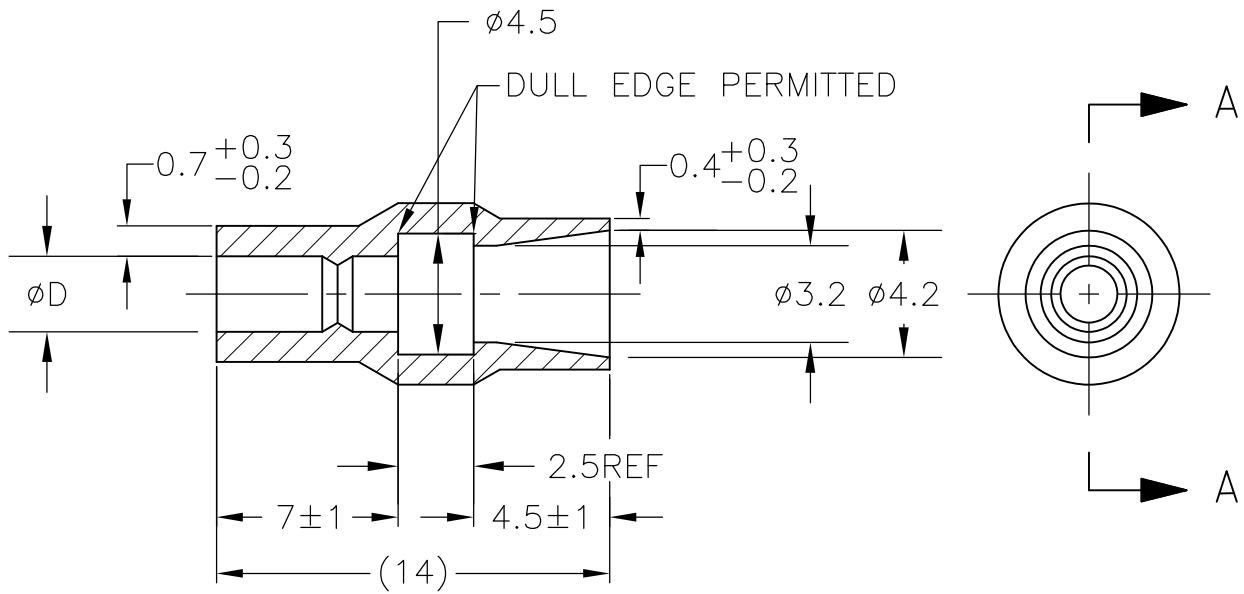
CUSTOMER DRAWING

SCALE  
尺度 2:1

SHEET 7 OF 13

REV H4

LOC	DIST	REVISIONS 変更				DATE	DWN	APVD
J	—	P	LTR	DESCRIPTION				
		—	—	SEE SHEET 1		—	—	—




A-A

1. 材質：SS-108（一般）
2. 一般公差：±0.5
3. 適用製品規格は無し
4. 品川商工発行のカatalogと本図で寸法が異なる場合は本図を優先する。
5. この製品の名称はコネクトスリーブ 5DIAシリーズシュワープラグ

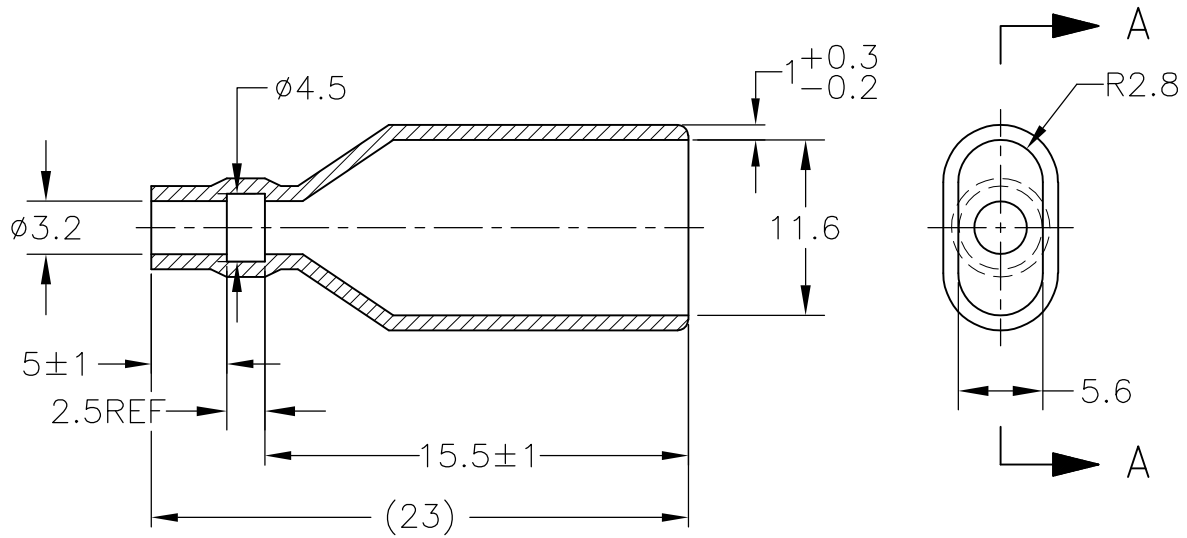
1. MATERIAL:SS-108(GENERAL)
2. GENERAL TOLERANCE: ±0.5
3. APPLICABLE PRODUCT SPEC NOT AVAILABLE
4. IN THE EVENT OF CONFLICT BETWEEN THE REQUIREMENTS OF THIS CUSTOMER DRAWING AND THE SHINAGAWA SHOKO CO LTD CATALOG THIS CUSTOMER DRAWING SHALL TAKE PRECEDENCE
5. THIS PRODUCT NAME CONNECT SLEEVE 5DIA SERIES SHUR PLUG
6. OBSOLETE PARTS: OBSOLETE CIS STREAMLINING PER D.RENAUD/D.SINISI

△6	OBSOLETE	CLEAR	2.2	224222	5-170823-1
	OBSOLETE		2.8	224228	<del>3-170823-4</del>
		COLOR	φ D	△ SHINAGAWA SHOKO PN	PART NUMBER

DIMENSIONS: 単位： 耗 mm	DWN A. YAMAGUCHI 31AUG00	MATERIAL 材料 —	FINISH 仕上 —
	CHK D. MATSUURA 31AUG00	 TE Connectivity	
	APVD K. BETSUI 31AUG00		
	PRODUCT SPEC 製品規格 —	NAME 名称 INSULATION SLEEVE	
TOLERANCES UNLESS OTHERWISE SPECIFIED: 一般公差	APPLICATION SPEC 取付適用規格 —	SIZE A4	CAGE CODE 00779
	WEIGHT —	DRAWING NO 番号 C-170823	RESTRICTED TO —
	CUSTOMER DRAWING		SCALE 尺度 4:1
			SHEET 8 OF 13
		REV H4	



LOC	DIST	REVISIONS 変更					
		P	LTR	DESCRIPTION	DATE	DWN	APVD
J	—		—	SEE SHEET 1	—	—	—



A-A

1. 材質：SS-108（一般）

2. 一般公差：±0.5

3. 適用製品規格は無し

△ 品川商工発行のカタログと本図で寸法が異なる場合は本図を優先する。

5. この製品の名称はコネクタスリーブ AMP00シリーズ

1. MATERIAL:SS-108(GENERAL)

2. GENERAL TOLERANCE: ±0.5


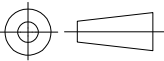
3. APPLICABLE PRODUCT SPEC NOT AVAILABLE

△ IN THE EVENT OF CONFLICT BETWEEN THE REQUIREMENTS OF THIS CUSTOMER DRAWING AND THE SHINAGAWA SHOKO CO LTD CATALOG THIS CUSTOMER DRAWING SHALL TAKE PRECEDENCE

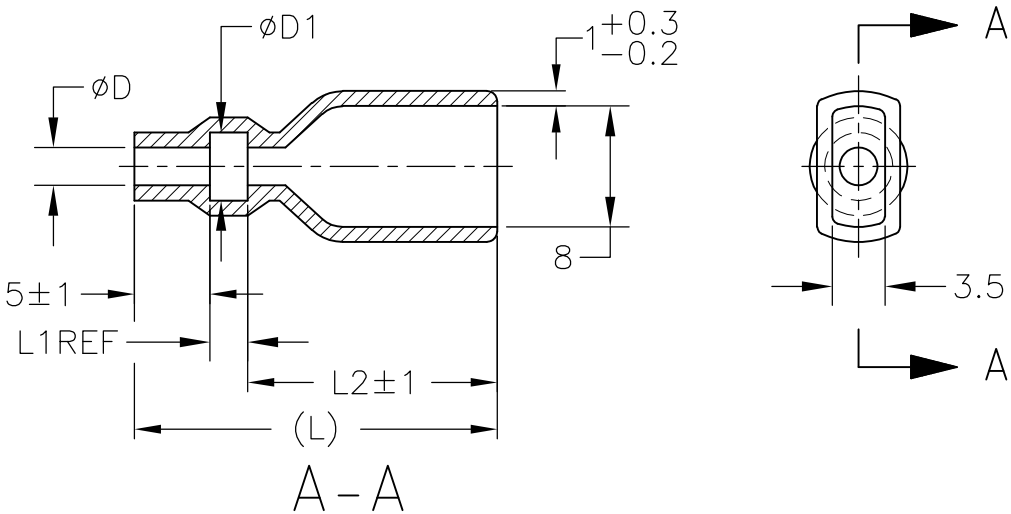
5. THIS PRODUCT NAME FLAG TYPE CONNECT SLEEVE AMP00 SERIES

△ OBSOLETE PARTS: OBSOLETE CIS STREAMLINING PER D.RENAUD/D.SINISI

△ OBSOLETE	CLEAR	230032-1	2-170823-1
	COLOR	△ SHINAGAWA SHOKO PN	PART NUMBER

DIMENSIONS: 単位： 耗 mm	DWN A. YAMAGUCHI 31AUG00	MATERIAL 材料 —	FINISH 仕上 —
	CHK D. MATSUURA 31AUG00	 TE Connectivity	
TOLERANCES UNLESS OTHERWISE SPECIFIED: 一般公差	APVD K. BETSUI 31AUG00		
0 PLC ± —	PRODUCT SPEC 製品規格 —	NAME 名称 INSULATION SLEEVE	
1 PLC ± —	APPLICATION SPEC 取付適用規格 —		
2 PLC ± —	WEIGHT —	SIZE A4	CAGE CODE 00779
3 PLC ± —		DRAWING NO 番号 C-170823	RESTRICTED TO —
4 PLC ± —			
ANGLES ± —			
			
CUSTOMER DRAWING		SCALE 尺度 2:1	SHEET 9 OF 13
		REV H4	

LOC	DIST	REVISIONS					
		P	LTR	DESCRIPTION		DATE	APVD
J	—		—	SEE SHEET 1		—	—



1. 材質：SS-108（一般）

2. 一般公差：±0.5

3. 適用製品規格は無し

⚠ 品川商工発行のカタログと本図で寸法が異なる場合は本図を優先する。
1. MATERIAL:SS-108(GENERAL)

2. GENERAL TOLERANCE：±0.5

3. APPLICABLE PRODUCT SPEC NOT AVAILABLE

⚠ IN THE EVENT OF CONFLICT BETWEEN THE REQUIREMENTS OF THIS CUSTOMER DRAWING AND THE SHINAGAWA SHOKO CO LTD CATALOG THIS CUSTOMER DRAWING SHALL TAKE PRECEDENCE

⚠ OBSOLETE PARTS: OBSOLETE CIS STREAMLINING PER D.RENAUD/D.SINISI

OBSOLETE	YELLOW	24	16.5	2.5	4.5	2.5	238025-2	4-170823-8
OBSOLETE	RED					2.5	238025-1	4-170823-7
OBSOLETE	CLEAR	25	17.5	3	5	4	238040	4-170823-9
OBSOLETE	BROWN	24.5	17.0	2.5	4.7	3.2	238032-3	3-170823-2
OBSOLETE	BLUE						238032-2	3-170823-1
⚠ OBSOLETE	CLEAR	40.5	32.5	3	4.5	3.5	238035-3	<del>2-170823-7</del>
							238035-2	2-170823-0
							238035-1	1-170823-9
		27	19.5	2.5	4.7	3.2	238032-1	1-170823-8
⚠ OBSOLETE		45	37.5	3	3.2	2	238020-1	<del>4-170823-7</del>
		25	17.5	2.5	5.3	3.8	238038	1-170823-6
		24	16.0	3	4.5	3.5	238035	1-170823-5
⚠ OBSOLETE		27	19.5	2.5	7.5	6	238060	<del>170823-7</del>
		25	17.5		6.3	4.8	238048	170823-6
		24	16.5		4.7	3.2	238032	170823-4
			16.0	3	3.2	2	238020	170823-3
				3	4.5	2.5	238025	170823-2
	COLOR	L	L2	L1	φ D1	φ D	SHINAGAWA SHOKO PN	PART NUMBER

THIS DRAWING IS A CONTROLLED DOCUMENT.

DIMENSIONS:  
単位： 耗  
mm

MATERIAL  
材料

TOLERANCES UNLESS OTHERWISE SPECIFIED:  
一般公差

0 PLC ± —

1 PLC ± —

2 PLC ± —

3 PLC ± —

4 PLC ± —

ANGLES ± —

FINISH  
仕上

DWN  
A. YAMAGUCHI  
31AUG00

CHK  
D. MATSUURA  
31AUG02

APVD  
K. BETSUI  
31AUG02

PRODUCT SPEC  
製品規格

APPLICATION SPEC  
取付適用規格

WEIGHT  
—

CUSTOMER DRAWING

TE Connectivity

NAME  
名称

INSULATION SLEEVE

SIZE  
A3

CAGE CODE  
00779

DRAWING NO  
番号  
C-170823

RESTRICTED TO  
—

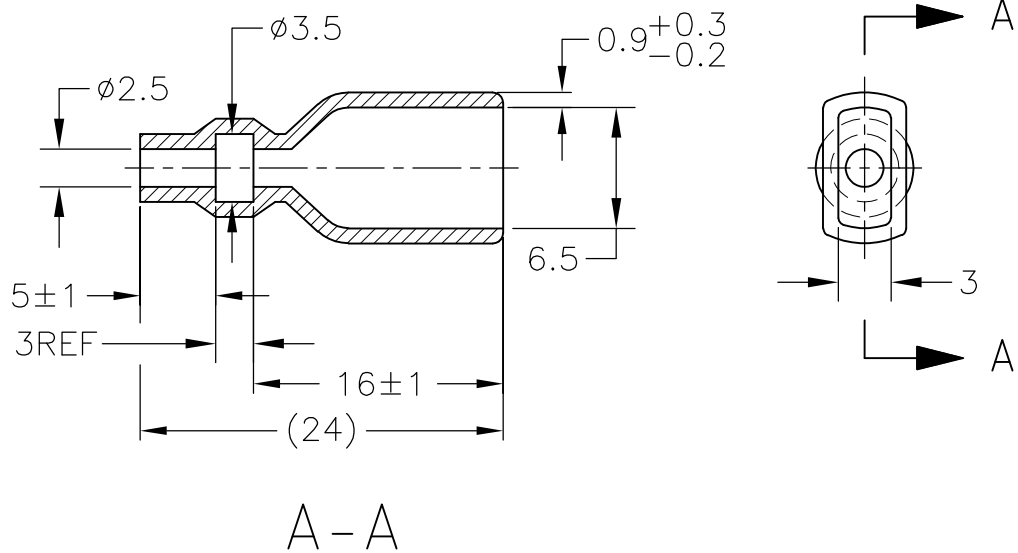
SCALE  
尺度 2:1

SHEET  
10 OF 13

REV  
H4

1470-19 (3/11)  
Downloaded from [Arrow.com](https://arrow.com)


LOC	DIST	REVISIONS 変更					
		P	LTR	DESCRIPTION	DATE	DWN	APVD
J	—		—	SEE SHEET 1	—	—	—



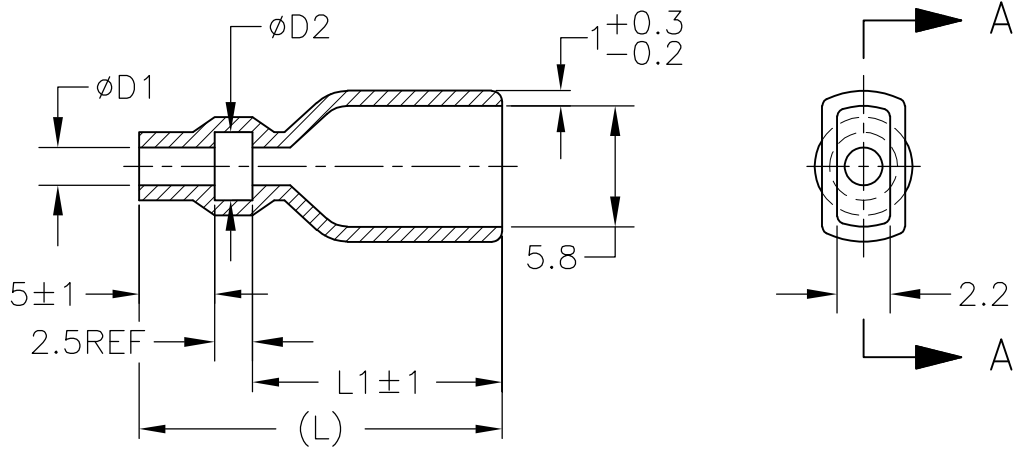
1. 材質：SS-108（一般）
2. 一般公差：±0.5
3. 適用製品規格は無し
4. 品川商工発行のカatalogと本図で寸法が異なる場合は本図を優先する。
5. この製品の名称はコネクトスリーブ AMP205シリーズ

1. MATERIAL:SS-108(GENERAL)
2. GENERAL TOLERANCE: ±0.5
3. APPLICABLE PRODUCT SPEC NOT AVAILABLE
4. IN THE EVENT OF CONFLICT BETWEEN THE REQUIREMENTS OF THIS CUSTOMER DRAWING AND THE SHINAGAWA SHOKO CO LTD CATALOG THIS CUSTOMER DRAWING SHALL TAKE PRECEDENCE
5. THIS PRODUCT NAME FLAG TYPE CONNECT SLEEVE AMP205 SERIES

CLEAR	236525	4-170823-1
COLOR	△ SHINAGAWA SHOKO PN	PART NUMBER

DIMENSIONS: 単位： 耗 mm	DWN A. YAMAGUCHI	31AUG00	MATERIAL 材料	—	FINISH 仕上	—
	CHK D. MATSUURA	31AUG00	 TE Connectivity			
TOLERANCES UNLESS OTHERWISE SPECIFIED: 一般公差	APVD K. BETSUI	31AUG00				
	PRODUCT SPEC 製品規格	—	NAME 名称			
0 PLC ± —	APPLICATION SPEC 取付適用規格	—	INSULATION SLEEVE			
1 PLC ± —	WEIGHT	—	SIZE	CAGE CODE	DRAWING NO 番号	RESTRICTED TO
2 PLC ± —			A4	00779	C-170823	—
3 PLC ± —						
4 PLC ± —						
ANGLES ± —						
CUSTOMER DRAWING			SCALE 尺度	2:1	SHEET 11 OF 13	REV H4

LOC	DIST	REVISIONS 変更					
		P	LTR	DESCRIPTION	DATE	DWN	APVD
J	—		—	SEE SHEET 1	—	—	—




A-A

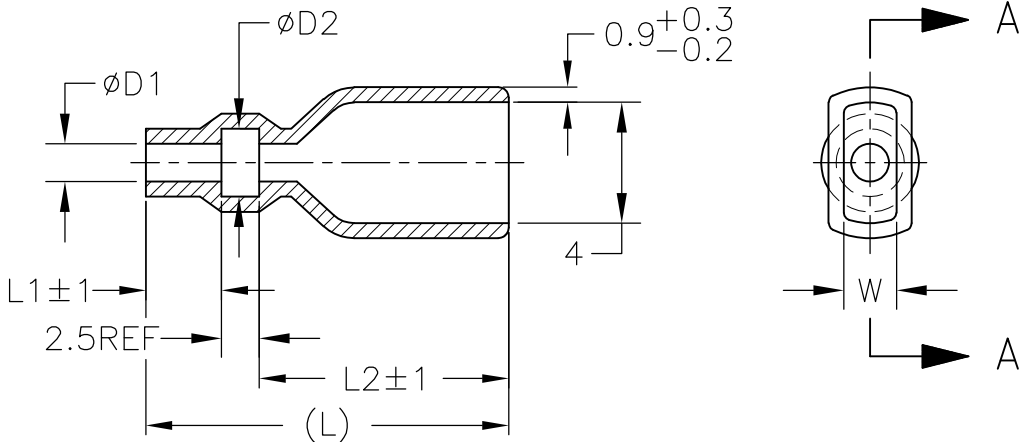
1. 材質: SS-108 (一般)
2. 一般公差:  $\pm 0.5$
3. 適用製品規格は無し
- △ 品川商工発行のカタログと本図で寸法が異なる場合は本図を優先する。
5. この製品の名称はコネクタスリーブ AMP187シリーズ

1. MATERIAL: SS-108 (GENERAL)
2. GENERAL TOLERANCE:  $\pm 0.5$
3. APPLICABLE PRODUCT SPEC NOT AVAILABLE
- △ IN THE EVENT OF CONFLICT BETWEEN THE REQUIREMENTS OF THIS CUSTOMER DRAWING AND THE SHINAGAWA SHOKO CO LTD CATALOG THIS CUSTOMER DRAWING SHALL TAKE PRECEDENCE
5. THIS PRODUCT NAME FLAG TYPE CONNECT SLEEVE AMP187 SERIES
- △ OBSOLETE PARTS: OBSOLETE CIS STREAMLINING PER D.RENAUD/D.SINISI

△ OBSOLETE	CLEAR	23	15.5	3.3	1.8	235818	2-170823-5
		20	12.5	3.5	2.5	235825-1	1-170823-4
		23	15.5	3.7	2.2	235822	1-170823-3
	COLOR	L	L1	$\phi D2$	$\phi D1$	△ SHINAGAWA SHOKO PN	PART NUMBER

DIMENSIONS: 単位: 耗 mm	DWN A. YAMAGUCHI 31AUG00	MATERIAL 材料 —	FINISH 仕上 —
	CHK D. MATSUURA 31AUG00	 TE Connectivity	
TOLERANCES UNLESS OTHERWISE SPECIFIED: 一般公差	APVD K. BETSUI 31AUG00		
	PRODUCT SPEC 製品規格 —	NAME 名称 INSULATION SLEEVE	
0 PLC 1 PLC 2 PLC 3 PLC 4 PLC ANGLES	APPLICATION SPEC 取付適用規格 —	SIZE A4	CAGE CODE 00779
	WEIGHT —	DRAWING NO 番号 C-170823	RESTRICTED TO —
CUSTOMER DRAWING		SCALE 尺度 2:1	SHEET 12 OF 13
		REV H4	

LOC	DIST	REVISIONS				
		P	LTR	DESCRIPTION	DATE	APVD
J	—		—	SEE SHEET 1	—	—



A-A

1. 材質：SS-108（一般）

2. 一般公差：±0.5

3. 適用製品規格は無し

4. 品川商工発行のカタログと本図で寸法が異なる場合は本図を優先する。
1. MATERIAL:SS-108(GENERAL)

2. GENERAL TOLERANCE：±0.5

3. APPLICABLE PRODUCT SPEC NOT AVAILABLE

4. IN THE EVENT OF CONFLICT BETWEEN THE REQUIREMENTS OF THIS CUSTOMER DRAWING AND THE SHINAGAWA SHOKO CO LTD CATALOG THIS CUSTOMER DRAWING SHALL TAKE PRECEDENCE

5. OBSOLETE PARTS: OBSOLETE CIS STREAMLINING PER D.RENAUD/D.SINISI

△5	OBSOLETE	CLEAR	37	29.5	5	3.5	2.5	2	234025-4	<del>5-170823-4</del>	
	OBSOLETE					4.3	2.8	2.1	234028	5-170823-3	
△5	OBSOLETE	YELLOW	21	13.5		3.5	2.5	2	234025-3	<del>4-170823-6</del>	
	OBSOLETE	RED							234025-2	4-170823-5	
	OBSOLETE	BLACK				3.3	1.8	2.1	234018-4	<del>2-170823-4</del>	
	OBSOLETE	CLEAR	23	15.5		3.5	2.5		234025-1	2-170823-3	
△5	OBSOLETE					3.8	3	2	234030-1	<del>2-170823-2</del>	
			30	22.5		3.4	1.8	2.1	234018-2	1-170823-2	
			23	15.5					234018-1	1-170823-1	
			21	13.5		3.8	3	2	234030	1-170823-0	
			18	12.5	3	2.8	1.6	2.1	234016	170823-8	
	21		13.5	5	3.5	2.5	2		234025	170823-1	
		COLOR	L	L2	L1	φ d2	φ d1	W	SHINAGAWA SHOKO PN	PART NUMBER	

THIS DRAWING IS A CONTROLLED DOCUMENT.

DIMENSIONS:  
単位： 耗  
mm

MATERIAL  
材料

TOLERANCES UNLESS  
OTHERWISE SPECIFIED:  
一般公差

0 PLC ± —

1 PLC ± —

2 PLC ± —

3 PLC ± —

4 PLC ± —

ANGLES ± —

FINISH  
仕上

DWN  
A. YAMAGUCHI  
31AUG00

CHK  
D. MATSUURA  
31AUG02

APVD  
K. BETSUI  
31AUG02

PRODUCT SPEC  
製品規格

APPLICATION SPEC  
取付適用規格

WEIGHT  
—

CUSTOMER DRAWING

STE

TE Connectivity

NAME  
名称

INSULATION SLEEVE

SIZE  
A3

CAGE CODE  
00779

DRAWING NO  
番号  
C-170823

RESTRICTED TO  
—

SCALE  
尺度 2:1

SHEET  
13 OF 13

REV  
H4

1470-19 (3/11)  
Downloaded from [Arrow.com](https://arrow.com)