

This document is the property of Amphenol Corporation and is delivered on the express condition that it is not to be disclosed, reproduced or used, in whole or in part, for manufacture or sale by anyone other than Amphenol Corporation without its prior consent, and that no right is granted to disclose or to use any information in this document.

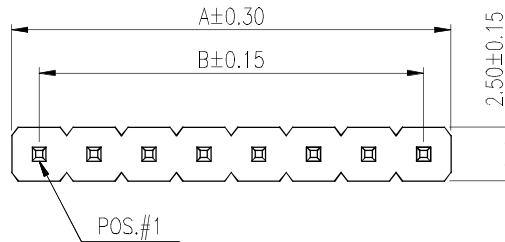
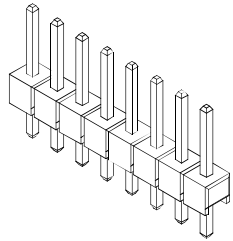
The marking on this product doesn't contain environmental hazardous materials per Material Specification SS-00259 for Sony GP compliant or per directive 2011/65/EU for RoHS compliant.



ORIGINAL



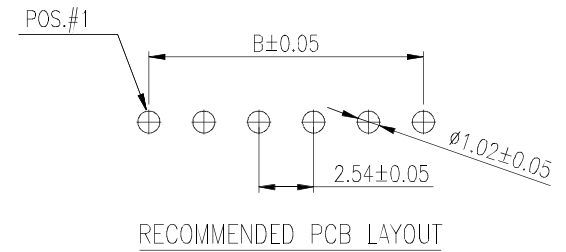
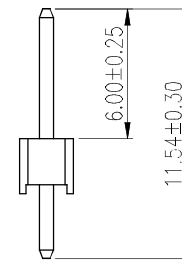
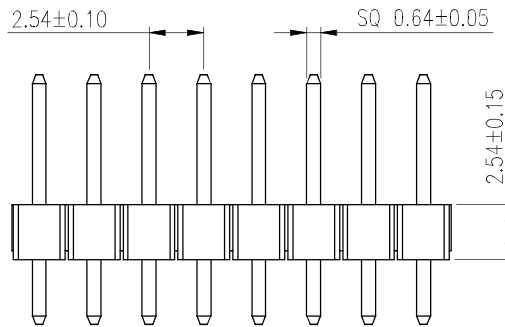
REVISIONS				
SYM	ECN No.	DESCRIPTION	DATE	APPROVED
A		RELEASE TO PRODUCTION	02/19/2008	Honk Hsu
B	NE-12108	CHANGE NEW FORM	06/28/2012	Roger Tsai
C	NE-14225	ADDED PACKAGING	12/30/2014	Roger Tsai



NOTES:

- INSULATOR: LCP, UL 94V-0, COLOR- BLACK
- CONTACT: COPPER ALLOY, "XXX"- PIN CONTACT PLATING
 "005"- 15μ" GOLD
 "010"- 30μ" GOLD
 "018"- FULL GOLD FLASH
 "025"- 5μ" GOLD
 "032"- FULL TIN
- THIS PRODUCT DOESN'T CONTAIN ENVIRONMENTAL HAZARDOUS MATERIALS PER DIRECTIVE 2011/65/EU FOR RoHS.
- PACKING IS PER AMTA PACKING SPECIFICATION PKS-0001
- ELECTRICAL:
 CURRENT RATING: 3.0 AMPS/CONTACT MAX.;
 CONTACT RESISTANCE: ≤ 20 mΩ / CONTACT;
 INSULATION RESISTANCE: ≥1000 MΩ AT V=100 V
 WITHSTANDING VOLTAGE:1000 V AC/MINUTE.

G800 LQ 268 XXX EU	1 x 40 = 40	101.60	99.06
G800 LQ 269 XXX EU	1 x 39 = 39	99.06	96.52
G800 LQ 270 XXX EU	1 x 38 = 38	96.52	93.98
G800 LQ 271 XXX EU	1 x 37 = 37	93.98	91.44
G800 LQ 272 XXX EU	1 x 36 = 36	91.44	88.90
G800 LQ 273 XXX EU	1 x 35 = 35	88.90	86.36
G800 LQ 274 XXX EU	1 x 34 = 34	86.36	83.82
G800 LQ 275 XXX EU	1 x 33 = 33	83.82	81.28
G800 LQ 276 XXX EU	1 x 32 = 32	81.28	78.74
G800 LQ 277 XXX EU	1 x 31 = 31	78.74	76.20
G800 LQ 278 XXX EU	1 x 30 = 30	76.20	73.66
G800 LQ 279 XXX EU	1 x 29 = 29	73.66	71.12
G800 LQ 280 XXX EU	1 x 28 = 28	71.12	68.58
G800 LQ 281 XXX EU	1 x 27 = 27	68.58	66.04
G800 LQ 282 XXX EU	1 x 26 = 26	66.04	63.50
G800 LQ 283 XXX EU	1 x 25 = 25	63.50	60.96
G800 LQ 284 XXX EU	1 x 24 = 24	60.96	58.42
G800 LQ 285 XXX EU	1 x 23 = 23	58.42	55.88
G800 LQ 286 XXX EU	1 x 22 = 22	55.88	53.34
G800 LQ 287 XXX EU	1 x 21 = 21	53.34	50.80
G800 LQ 288 XXX EU	1 x 20 = 20	50.80	48.26
G800 LQ 289 XXX EU	1 x 19 = 19	48.26	45.72
G800 LQ 290 XXX EU	1 x 18 = 18	45.72	43.18
G800 LQ 291 XXX EU	1 x 17 = 17	43.18	40.64
G800 LQ 292 XXX EU	1 x 16 = 16	40.64	38.10
G800 LQ 293 XXX EU	1 x 15 = 15	38.10	35.56
G800 LQ 294 XXX EU	1 x 14 = 14	35.56	33.02
G800 LQ 295 XXX EU	1 x 13 = 13	33.02	30.48
G800 LQ 296 XXX EU	1 x 12 = 12	30.48	27.94
G800 LQ 297 XXX EU	1 x 11 = 11	27.94	25.40
G800 LQ 298 XXX EU	1 x 10 = 10	25.40	22.86
G800 LQ 299 XXX EU	1 x 9 = 9	22.86	20.32
G800 LQ 300 XXX EU	1 x 8 = 8	20.32	17.78
G800 LQ 301 XXX EU	1 x 7 = 7	17.78	15.24
G800 LQ 302 XXX EU	1 x 6 = 6	15.24	12.70
G800 LQ 303 XXX EU	1 x 5 = 5	12.70	10.16
G800 LQ 304 XXX EU	1 x 4 = 4	10.16	7.62
G800 LQ 305 XXX EU	1 x 3 = 3	7.62	5.08
G800 LQ 306 XXX EU	1 x 2 = 2	5.08	2.54
PART NUMBER	NO. OF POS.	A	B



TOLERANCE	APPROVALS	DATE	TITLE		PART No.	
X. X.X X.XX X.XXX ANGULAR ±1° UNLESS OTHERWISE SPECIFIED	DRAWN Aqua Chou CHECKED Roger Tsai APPROVED Roger Tsai DWG TYPE CUST DWG	12/30/2014 12/30/2014 12/30/2014	G800 SERIES SINGLE ROW HEADER 2.54MM-PITCH, STR. PCB MOUNT		G800LQ XXX XXX EU	
			UNIT mm	SIZE A3	SHEET 1 OF 2	
			SCALE NA		DWG No. HEAD-G800LQXXXXXXEU_1-13	REV. C

Amphenol®

Amphenol Corporation
Amphenol Taiwan Corporation



This document is the property of Amphenol Corporation and is delivered on the express condition that it is not to be disclosed, reproduced or used, in whole or in part, for manufacture or sale by anyone other than Amphenol Corporation without its prior consent, and that no right is granted to disclose or to use any information in this document.

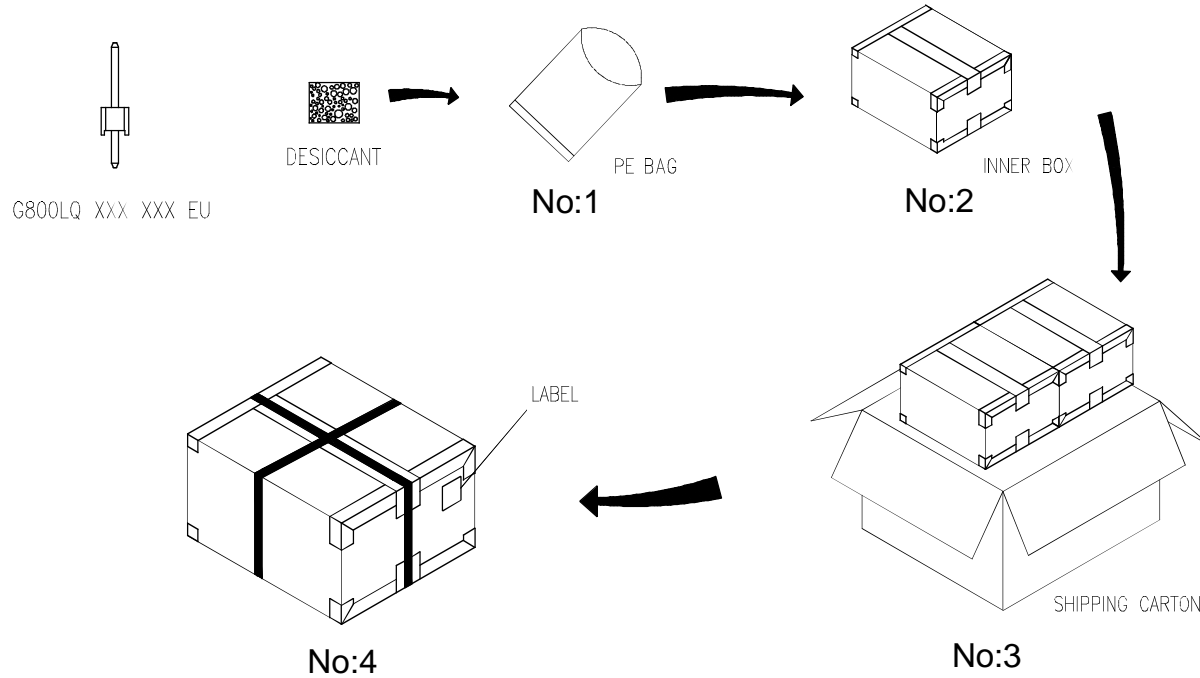
The marking on this product doesn't contain environmental hazardous materials per Material Specification SS-00259 for Sony GP compliant or per directive 2011/65/EU for RoHS compliant.



ORIGINAL



REVISIONS				
SYM	ECN No.	DESCRIPTION	DATE	APPROVED
A		RELEASE TO PRODUCTION	02/19/2008	Hank Hsu
B	NE-12108	CHANGE NEW FORM	06/28/2012	Roger Tsai
C	NE-14225	ADDED PACKAGING	12/30/2014	Roger Tsai



NOTES:

1. INNER BOX SIZE : 215 X 175 X 150 mm
2. SHIPPING CARTON SIZE : 370 X 230 X 175 mm

P/N	POS.	PCS/BAG	BAG/INNER BOX	INNER BOX/SHIPPING CARTON	QUANTITY (PCS)	N.W. KG	G.W. KG
G800LQ 300 XXX EU	1x8=8	1000	6	2	12,000	5.4	5.7
G800LQ 302 XXX EU	1x6=6	1000	6	2	12,000	4.2	4.6
G800LQ 303 XXX EU	1x5=5	2000	5	2	20,000	5.8	6.6
G800LQ 304 XXX EU	1x4=4	2000	5	2	20,000	4.6	5.3
G800LQ 305 XXX EU	1x3=3	2000	6	2	24,000	3.8	4.6
G800LQ 306 XXX EU	1x2=2	2000	15	2	60,000	7.2	8.0

TOLERANCE	APPROVALS	DATE	TITLE		PART No.	
X. ±0.30	DRAWN Aqua Chou	12/30/2014	G800 SERIES SINGLE ROW HEADER 2.54MM-PITCH, STR. PCB MOUNT		Amphenol® Amphenol Corporation Amphenol Taiwan Corporation	
X.X ±0.20	CHECKED Roger Tsai	12/30/2014				
X.XX ±0.10	APPROVED Roger Tsai	12/30/2014				
ANGULAR ±1°	DWG TYPE CUST DWG	PROJECT CODE HEAD	UNIT mm	SIZE A3	G800LQ XXX XXX EU	
UNLESS OTHERWISE SPECIFIED			SCALE NA	SHEET 2 OF 2	DWG No. HEAD-G800LQXXXXXXEU_1-13	REV. C

