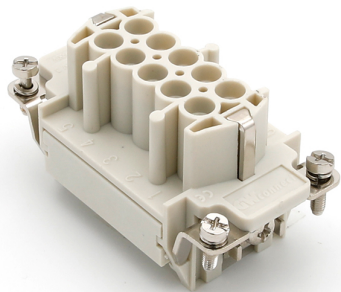





Part Number : 936010236
Product Description : GWconnect Crimp Contact Insert, Female, 10-Pole, 16A, for Crimp Contacts, Size 10B «57x27»
Series Number : 93601
Status : Active
Product Category : Heavy-Duty Connectors
Engineering Number : 7310.6062.0



Product Environment Compliance

Compliance

GADSL/IMDS	Not Relevant
China RoHS	
EU ELV	Not Relevant
Low-Halogen Status	Not Reviewed per IEC 61249-2-21
REACH SVHC	Contains Lead per ED/71/2019 (16 July 2019)
EU RoHS	Compliant with Exemption 6(c) per EU 2015/863

Multiple Part Product Compliance Statements

- Eu RoHS
- REACH SVHC
- Low-Halogen

Multiple Part Industry Compliance Documents

- IPC 1752A Class C
- IPC 1752A Class D
- Molex Product Compliance Declaration
- IEC-62474
- chemSHERPA (xml)

EU RoHS Certificate of Compliance

Part Details

General

Status	Active
Category	Heavy-Duty Connectors
Series	93601
Description	GWconnect Crimp Contact Insert, Female, 10-Pole, 16A, for Crimp Contacts, Size 10B «57x27»
Component Type	Inserts - Crimp Contact
Insert Series	S-EC
Product Name	GWconnect
Standard	CSA C22.2 NO. 182.3, EN 60664-1, EN 61984, UL 1977
UPC	887191878447

Agency

CSA	256883
UL	E249674

Electrical

Current - Maximum per Contact	16.0A
Voltage - Maximum	500V

Physical

Component Size	10B «57X27»
Durability (mating cycles max)	700
Gender	Female
Insert Color	Grey
Material - Insert	Polycarbonate
Net Weight	48.000/g
Number of Rows	2
Packaging Type	Bag
Polarized to Mating Part	Yes
Poles	10
Temperature Range - Operating	-40° to +125°C

Mates With / Use With

Mates with Part(s)

Description	Part Number
GWconnect Crimp Contact Insert, Male, 10-Pole, 16A, for Crimp Contacts, Size 10B «57x27»	<u>936010243</u>

Use with Part(s)

Description	Part Number
Use With	Turned Contacts - Male

This document was generated on Apr 26, 2025