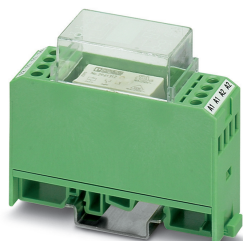


## Relay Module - EMG 22-REL/KSR-230/21 - 2952855

Please be informed that the data shown in this PDF Document is generated from our Online Catalog. Please find the complete data in the user's documentation. Our General Terms of Use for Downloads are valid (<http://phoenixcontact.com/download>)



Relay module, with soldered-in miniature switching relay, contact (AgNi): medium to large loads, 1 changeover contact, input voltage 230 V AC/DC


The figure shows version EMG 22-REL/KSR- 24/21 AU, with soldered-in miniature switching relay

### Your advantages

- ✓ Safe isolation according to DIN EN 50178 between coil and contact
- ✓ Integrated input circuit and interference suppression circuit



### Key Commercial Data

|                                      |   |
|--------------------------------------|---|
| Packing unit                         | 1 pc  |
| Minimum order quantity               | 10 pc   |
| GTIN                                 | <br>4 017918 084493 |
| GTIN                                 | 4017918084493   |
| Weight per Piece (excluding packing) | 70.400 g  |
| Custom tariff number                 | 85364900  |
| Country of origin                    | Germany   |

### Technical data

#### Note

|                         |   |
|-------------------------|---|
| Utilization restriction | EMC: class A product, see manufacturer's declaration in the download area |
|-------------------------|---|

#### Dimensions

|       |         |
|-------|---------|
| Width | 22.5 mm |
|-------|---------|

# Relay Module - EMG 22-REL/KSR-230/21 - 2952855

## Technical data

### Dimensions

|        |         |
|--------|---------|
| Height | 75 mm   |
| Depth  | 62.5 mm |

### Ambient conditions

|   |                  |
|---|------------------|
| Ambient temperature (operation)         | -20 °C ... 50 °C |
| Ambient temperature (storage/transport) | -20 °C ... 70 °C |
| Degree of protection                    | IP20             |

### Coil side

|   |                                   |
|---|-----------------------------------|
| Nominal input voltage $U_N$             | 230 V AC/DC                       |
| Typical input current at $U_N$          | 5 mA                              |
| Typical response time                   | 8 ms                              |
| Typical release time                    | 10 ms                             |
| Protective circuit                      | Bridge rectifier Bridge rectifier |
|   | Varistor Varistor                 |
| Operating voltage display               | Yellow LED                        |
| Power dissipation for nominal condition | 1.15 W                            |

### Contact side

|                                       |                                      |
|---------------------------------------|--------------------------------------|
| Contact type                          | Single contact, 1 changeover contact |
| Type of switch contact                | Single contact                       |
| Contact material                      | AgNi                                 |
| Maximum switching voltage             | 250 V AC/DC                          |
| Maximum inrush current                | 8 A                                  |
| Limiting continuous current           | 6 A                                  |
| Interrupting rating (ohmic load) max. | 144 W (at 24 V DC)                   |
|                                       | 58 W (at 48 V DC)                    |
|                                       | 48 W (at 60 V DC)                    |
|                                       | 50 W (at 110 V DC)                   |
|                                       | 80 W (at 220 V DC)                   |
|                                       | 1500 VA (for 250 V AC)               |

### General

|                         |  |
|-------------------------|--|
| Test voltage            | 5 kV <sub>rms</sub> (50 Hz, 1 min., winding/contact) |
|                         | 1 kV AC (50 Hz, 1 min., contact/contact)             |
| Operating mode          | 100% operating factor                                |
| Mechanical service life | approx. $5 \times 10^7$ cycles                       |
| Mounting position       | any  |
| Assembly instructions   | in rows with zero spacing                            |

## Relay Module - EMG 22-REL/KSR-230/21 - 2952855

### Technical data

#### Connection data

|                                  |                     |
|----------------------------------|---------------------|
| Connection name                  | Coil side           |
| Connection method                | Screw connection    |
| Stripping length                 | 8 mm                |
| Screw thread                     | M3                  |
| Conductor cross section solid    | 0.2 mm² ... 4 mm²   |
| Conductor cross section flexible | 0.2 mm² ... 2.5 mm² |
| Conductor cross section AWG      | 24 ... 12           |

#### Connection data 2

|                                  |                     |
|----------------------------------|---------------------|
| Connection name                  | Contact side        |
| Connection method                | Screw connection    |
| Stripping length                 | 8 mm                |
| Screw thread                     | M3                  |
| Conductor cross section solid    | 0.2 mm² ... 4 mm²   |
| Conductor cross section flexible | 0.2 mm² ... 2.5 mm² |
| Conductor cross section AWG      | 24 ... 12           |

### Standards and Regulations

|                          |  |
|--------------------------|--|
| Standards/regulations    | EN 50178   |
| Rated insulation voltage | 260 V AC   |
| Rated surge voltage      | 4 kV   |
| Insulation               | Basic insulation   |
|                          | Safe isolation, reinforced insulation, and 6 kV between input circuit and output contact current paths |
| Pollution degree         | 2  |
| Overvoltage category     | III  |

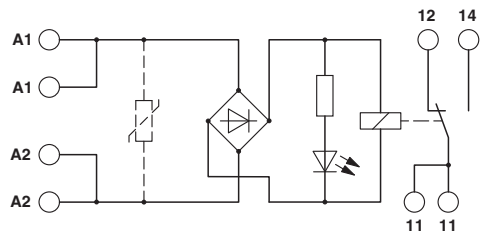
### Environmental Product Compliance

|            |   |
|------------|---|
| REACH SVHC | Lead 7439-92-1  |
| China RoHS | Environmentally Friendly Use Period = 50 years  |
|            | For details about hazardous substances go to tab "Downloads", Category "Manufacturer's declaration" |

### Drawings

Relay Module - EMG 22-REL/KSR-230/21 - 2952855

Circuit diagram



Classifications

eCl@ss

|               |          |
|---------------|----------|
| eCl@ss 10.0.1 | 27371601 |
| eCl@ss 11.0   | 27371601 |
| eCl@ss 4.0    | 27371100 |
| eCl@ss 4.1    | 27371100 |
| eCl@ss 5.0    | 27371600 |
| eCl@ss 5.1    | 27371600 |
| eCl@ss 6.0    | 27371600 |
| eCl@ss 7.0    | 27371601 |
| eCl@ss 9.0    | 27371601 |

ETIM

|          |          |
|----------|----------|
| ETIM 2.0 | EC001437 |
| ETIM 3.0 | EC001437 |
| ETIM 4.0 | EC001437 |
| ETIM 6.0 | EC001437 |
| ETIM 7.0 | EC001437 |

UNSPSC

|               |          |
|---------------|----------|
| UNSPSC 6.01   | 30211916 |
| UNSPSC 7.0901 | 39121515 |
| UNSPSC 11     | 39121515 |
| UNSPSC 12.01  | 39121515 |
| UNSPSC 13.2   | 39122334 |
| UNSPSC 18.0   | 39122334 |
| UNSPSC 19.0   | 39122334 |
| UNSPSC 20.0   | 39122334 |
| UNSPSC 21.0   | 39122334 |



# Relay Module - EMG 22-REL/KSR-230/21 - 2952855

## Approvals



### Approvals

Approvals

EAC / EAC

Ex Approvals

### Approval details

|     |  |                         |
|-----|--|-------------------------|
| EAC |   | TR_TS_D_00573_c         |
| EAC |  | RU*C-<br>DE.*08.B.00010 |