



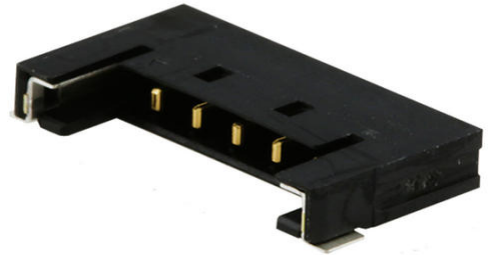
Part Number : [5040501291](#)

Product Description : 1.50mm Pitch, Pico-Lock PCB Header, Single Row, Right-Angle, Surface Mount, Gold (Au) Plating, Positive Lock, 12 Circuits, Tape and Reel

Series Number : 504050

Status : Active

Product Category : PCB Headers and Receptacles



Documents and Resources

Drawings

[5040501291_sd.pdf](#)

3D Models and Design Files

[STEP AP242](#)

[SOLIDWORKS](#)

[Creo](#)

[Symbol and Footprint \(Multi-Format\)](#)

[5040501291.dxf](#)

Specifications

[AS-504051-001-001.pdf](#)


[SPK-504050-001-001.pdf](#)

[5040511001-PS-000.pdf](#)

[PS-504051-001-001.pdf](#)

Product Environment Compliance

Compliance

| | |
|--------------------|---|
| GADSL/IMDS | Not Relevant |
| China RoHS |  per SJ/T 11365-2006 |
| EU ELV | Not Relevant |
| Low-Halogen Status | Low-Halogen per IEC 61249-2-21 |
| REACH SVHC | Not Contained per D(2025)7771-DC (04 Feb 2026) |

| | |
|---------|---------------------------|
| EU RoHS | Compliant per EU 2015/863 |
|---------|---------------------------|

Compliance Statements

- EU RoHS
- REACH SVHC
- Low-Halogen

Industry Documents

- IPC 1752A Class C
- IPC 1752A Class D
- Molex Product Compliance Declaration
- IEC-62474
- chemSHERPA (xml)

Substances of Interest

- PFAS

EU RoHS Certificate of Compliance

Additional Product Compliance Information

Part Details

General

| | |
|----------------|--|
| Status | Active |
| Category | PCB Headers and Receptacles |
| Series | 504050 |
| Description | 1.50mm Pitch, Pico-Lock PCB Header, Single Row, Right-Angle, Surface Mount, Gold (Au) Plating, Positive Lock, 12 Circuits, Tape and Reel |
| Application | Wire-to-Board |
| Component Type | PCB Header |
| Keyword | Pico-Lock 1.5 |
| Product Name | Pico-Lock |
| UPC | 887191541518 |

Agency

| | |
|-----|---------|
| CSA | LR19980 |
| UL | E29179 |

Electrical

| | |
|-------------------------------|------------------|
| Current - Maximum per Contact | 2.0A |
| Voltage - Maximum | 150V AC (RMS)/DC |

Physical

| | |
|--------------------------------|--------------------------------|
| Breakaway | No |
| Circuits (Loaded) | 12 |
| Circuits (maximum) | 12 |
| Color - Resin | Black |
| Durability (mating cycles max) | 30 |
| First Mate / Last Break | No |
| Flammability | 94V-0 |
| Glow-Wire Capable | No |
| Guide to Mating Part | No |
| Keying to Mating Part | N/A |
| Lock to Mating Part | Yes |
| Mated Height | 2.00mm |
| Material - Metal | Copper Alloy |
| Material - Plating Mating | Gold |
| Material - Plating Termination | Gold |
| Material - Resin | High Temperature Thermoplastic |
| Net Weight | 260.100/mg |
| Number of Rows | 1 |
| Orientation | Right Angle |
| Packaging Type | Embossed Tape on Reel |
| Pitch - Mating Interface | 1.50mm |
| Pitch - Termination Interface | 1.50mm |
| Plating min - Mating | 0.100µm |
| Polarized to Mating Part | Yes |
| Shrouded | Shrouded |
| Stackable | No |
| Temperature Range - Operating | -40° to +105°C |
| Termination Interface Style | Surface Mount |

Mates With / Use With

Mates with Part(s)

| Description | Part Number |
|---|---------------|
| 1.50mm Pitch, Pico-Lock Single Row Receptacle Housings | <u>504051</u> |
| Pico-Lock-to-Pico-Lock Off-the-Shelf (OTS) Cable Assemblies | <u>15132</u> |

This document was generated on May 19, 2026