

REFERENCE SPECIFICATIONS

-NFC 93425 (in compliance with HE 507)

PHYSICAL CHARACTERISTICS

-INSULATOR MATERIAL: THERMOPLASTIC ,UL94V0

-CONTACT MATERIAL: BRASS

-ACCESSORIES: BRASS

-SHELLS: STEEL

ELECTRICAL CHARACTERISTICS

-NOMINAL CURRENT: 40A

-CONTACT RESISTANCE: <= 7.3 mOhms

-CONTACT/CONTACT : >=1000 V

-CONTACT/GROUND : >=1200 V

-INSULATION RESISTANCE: >=5000 MOhms

ENVIRONMENTAL CHARACTERISTICS

- CLIMATIC CATEGORY: 55/125/21

TEMPERATURE RANGE -55°C TO +125°C

DAMP HEAT STEADY STATE 21 DAYS

SALT SPRAY 24 HOURS

MECHANICAL CHARACTERISTICS

- RETENTION AGAINST TORQUE: - Threaded insert: 0.7 N.m maximum

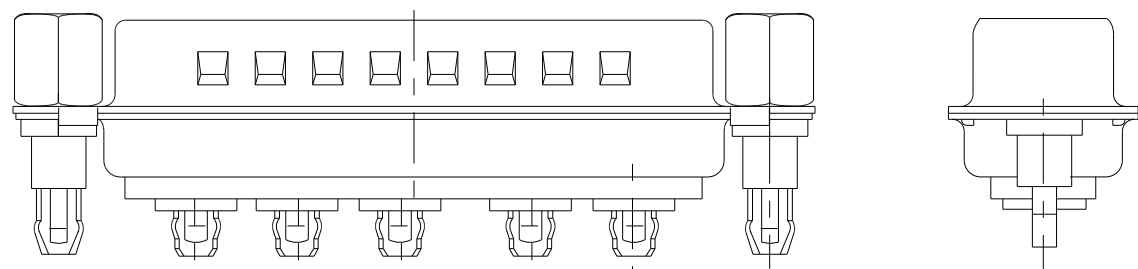
- Female screw : 0.5 N.m maximum

PRESS FIT PERFORMANCES

PRESS FIT CONTACTS	
INSERTION FORCE	<= 200 N Average insertion 160N
EXTRACTION FORCE	>= 30 N

NOTE RoHS INFORMATION

- The "LF" products meet european union Directives and other country regulations as described in GS-47-0004
- Termination plating spec:
 - Ni 1.27µmi+Sn 0.5 to 1.5µ(pure bright)
- Active area plating spec:
 - Ni + Gold/GxT
- Shell plating :2 to 4µm Cu + Ni + 3 to 10µmm Sn(pure bright)
- Accessories: Sn pure bright + nickel
- Packaging spec: See GS-14-920



5W5 FOR EXAMPLE

Series

DBL5W5P93C5G40LF

Shell size: **E A B C**

see sheet 2

Front accessory definition

see sheet 2

L :threaded insert M3

O :threaded insert UNC 4-40

V :female screw UNC 4-40

Layout of contacts (see sheet 3)

Contacts

P :Pin

Termination type

93 C Straight version

Plating

5 200 matings/unmatings

6 500 matings/unmatings

PCB accessories definition

see sheet 2

G :Harpoon used for PCB thickness from 1.60 mm

Power contacts

40 :Fitted with power contacts 40 Amp.

TABLE 1:PCB HOLE DIAMETERS

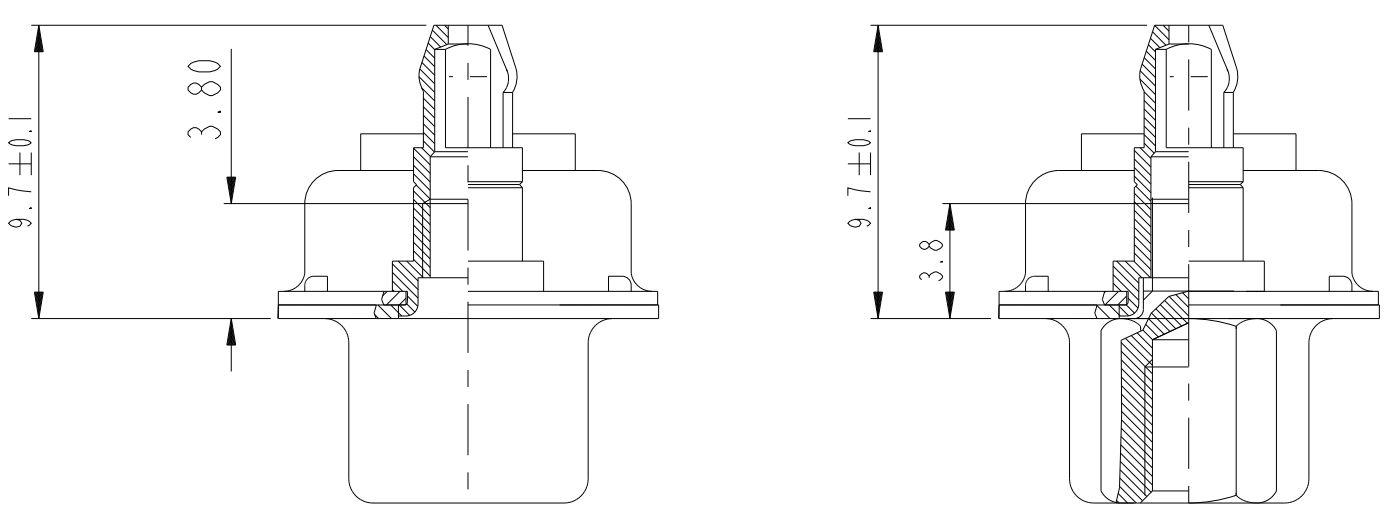
		SnPb holes for CONTACTS	Sn holes for CONTACTS	holes ACCESSORIES
P.C.B HOLE DEFINITION (NOTE-1 AND 2)	DRILL DIAMETER	ø3.22 REF(NOTE 3)	ø3.22 REF(NOTE 3)	ø3.10±0.10
	DRILLED HOLE	ø3.19-3.25	ø3.19-3.25	
	COPPER PLATING	25µ MINI (RECOMMENDED 50µ MAXI)	25µ MINI (RECOMMENDED 50µ MAXI)	
	TIN-LEAD PLATING	15µ MAXI (RECOMMENDED 5µ MINI)		
	TIN PLATING		0.8 to1,2µ	
		FINISH HOLE (AFTER REFLOW)	ø 3.02-3.20	ø3.08-3.20

NOTE-1:THESE DIMENSIONS MUST BE RESPECT TO SECURE PRESS-FIT PIN PERFORMANCES.

NOTE-2: ACCORDING TO IEC-352-5 SPEC.

NOTE-3: MAJOR REQUIREMENT FOR PRESS FIT PIN PERFORMANCE

spec ref		dr		1, Product Eng	2015/06/16			size	A2	scale	3:1		
tolerance std		eng		Gregar Mathew	2020/12/04			ecn no	ELX-133502-1	rel level	Released		
ISO 406		chr		-	-								
ISO 1101		appr		Kuriakose, San	2020/12/06								
						product family		D SUB -					
surface			Amphenol FCI			title		sub male dw		dwg no	C01-8639-2321C	rev	D
ISO 1302						full powerstraight press fit							
		linear		0.X	±0.3								
				0.XX	±0.1								
				0.XXX	±0.05								
		angular		0°	±2°								
						cat. no.		-	Product - Customer Drw		sheet 1 of 4		



FRONT ACCESSORIES	L insert M3	V insert UNC 4.40
	O insert UNC 4.40	
PCB ACCESSORY	G Harpoon for PCB from 1.60mm	G Harpoon for PCB from 1.60mm

PART NUMBER	AMPS	MATINGS/ UNMATINGS	FRONT ACCESSORIES	PCB ACCESSORY
D*LxWxP93C5G40LF	40	200	insert M3	harpoon PCB from 1.60mm
D*OxWxP93C5G40LF	40	200	insert UNC 4.40	harpoon PCB from 1.60mm
D*VxWxP93C5G40LF	40	200	female screw UNC 4.40	harpoon PCB from 1.60mm

shell size	LAYOUTS
*	xWx
E	2V2
A	3V3
A	3W3
B	5W5
C	8W8

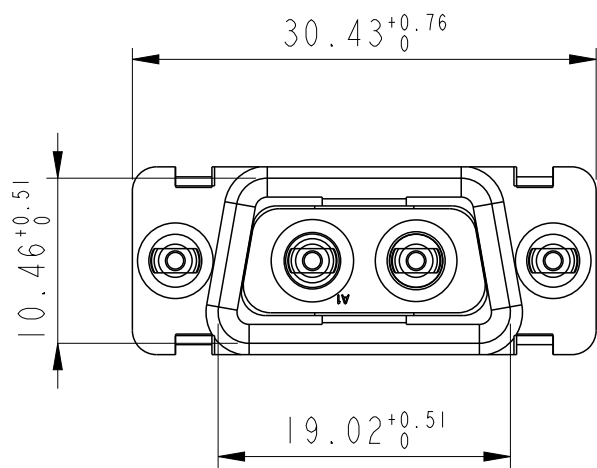
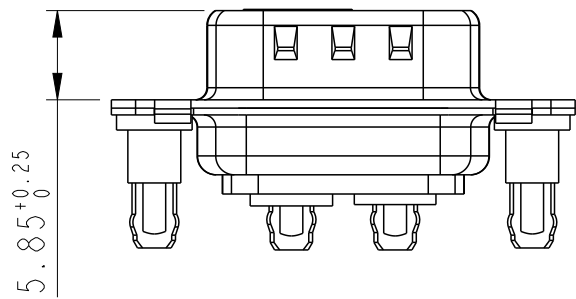
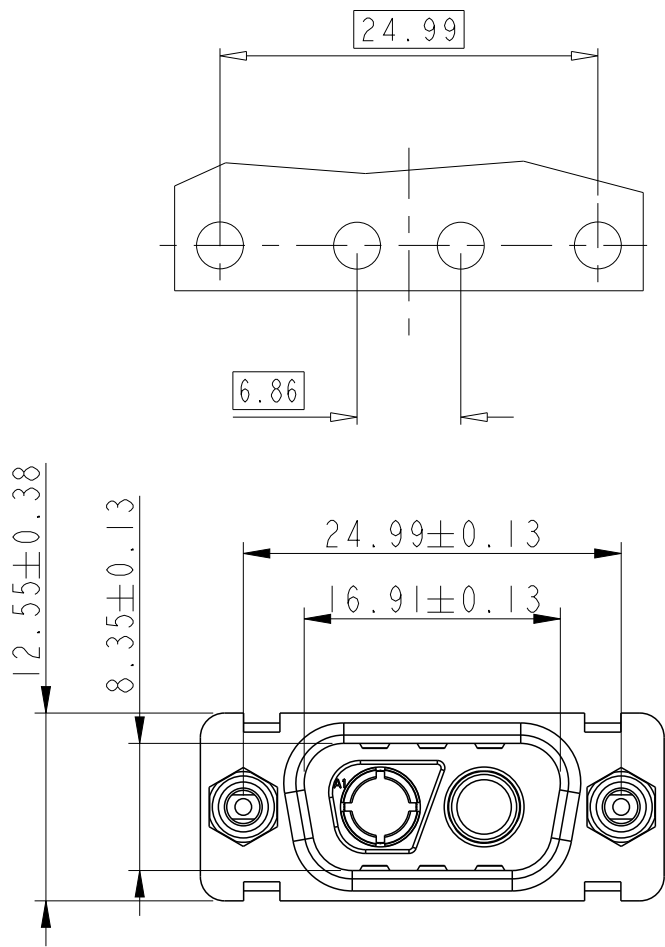
PART NUMBER	AMPS	MATINGS/ UNMATINGS	FRONT ACCESSORY	PCB ACCESSORIES
D*LxWxP93C6G40LF	40	500	insert M3	harpoon PCB from 1.60mm
D*OxWxP93C6G40LF	40	500	insert UNC 4.40	harpoon PCB from 1.60mm
D*VxWxP93C6G40LF	40	500	female screw UNC 4.40	harpoon PCB from 1.60mm

spec ref		dr		1, Product Eng		2015/06/16		projection		mm		size		A2		scale		3:1					
tolerance std		eng		Gregar Mathew		2020/12/04						ecn no		ELX-43502-1									
ISO 406 ISO 1101		chr		-		-		product family				D SUB -		rel level		Released							
ISO 1302		appr		Kuriakose, San		2020/12/06																	
surface		linear		0.X		±0.3				title		sub male dw		dwg no		C01-8639-2321C		rev		D			
		0.XX		±0.1																			
		0.XXX		±0.05																			
ISO 1302		angular		0°		±2°																	

2V2

LAYOUT AND CONNECTOR DIMENSIONS

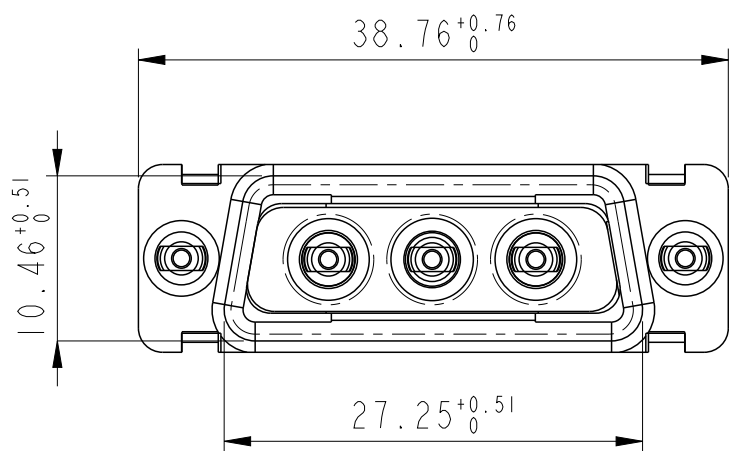
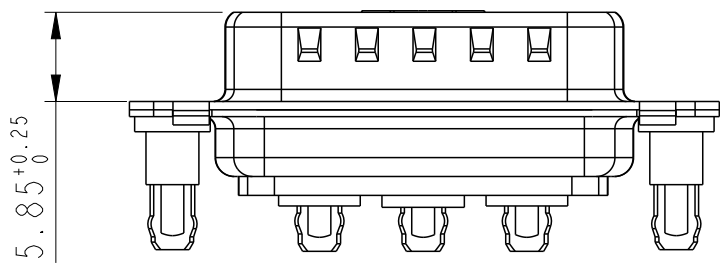
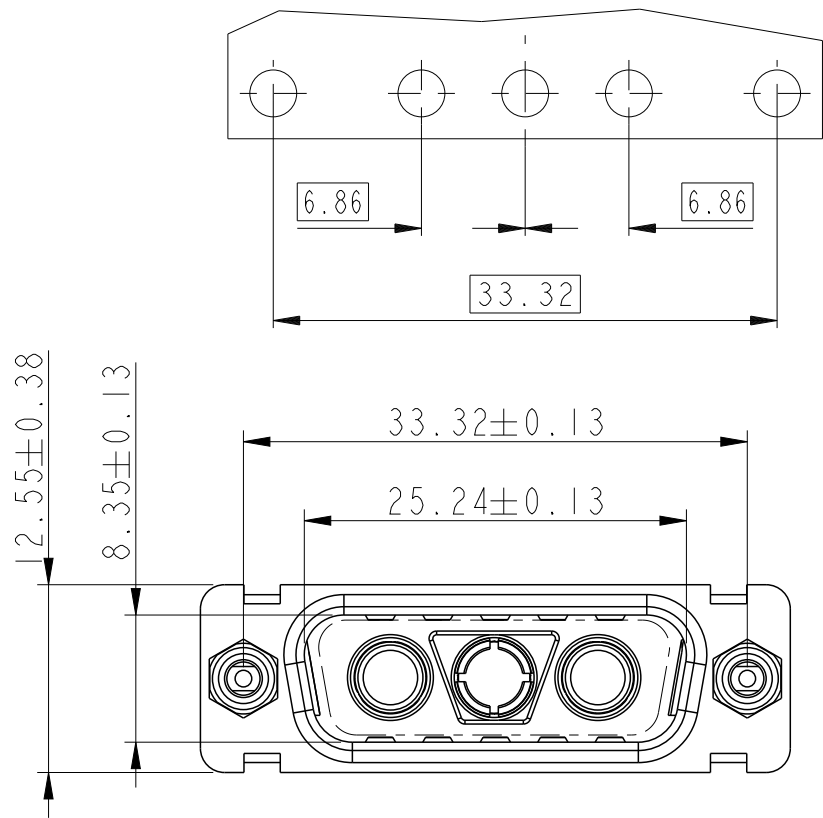
For PCB hole diameters see table I sheet I



3V3

LAYOUT AND CONNECTOR DIMENSIONS

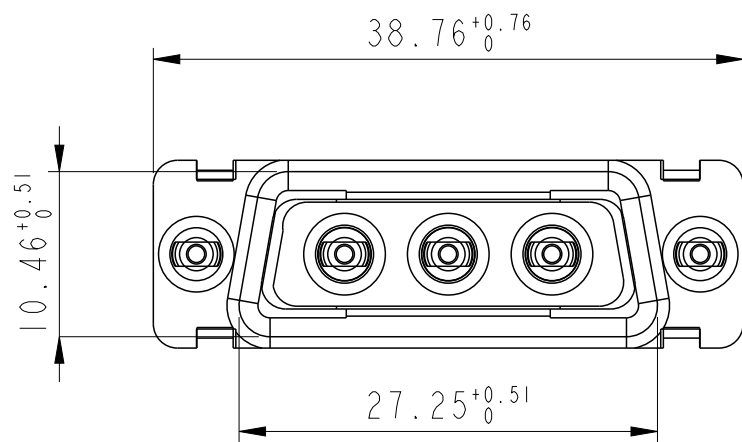
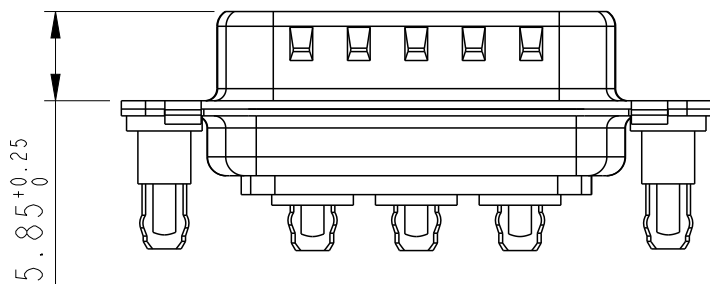
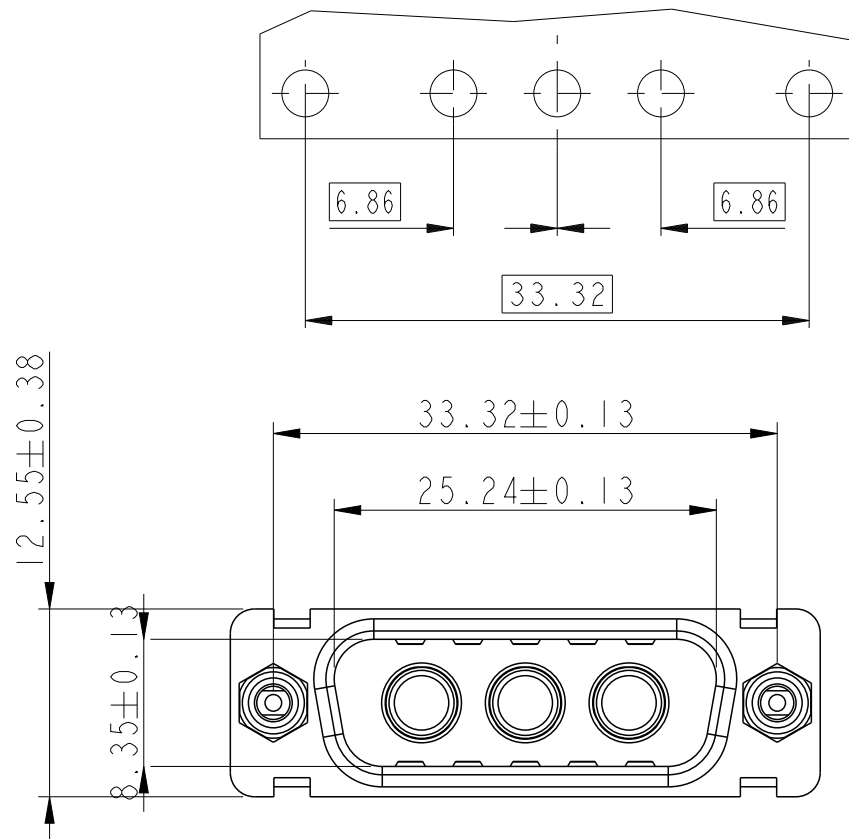
For PCB hole diameters see table I sheet I



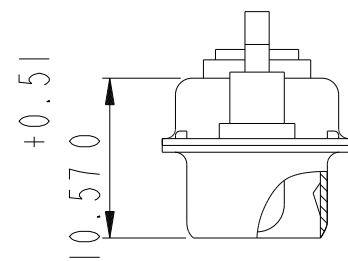
3W3

LAYOUT AND CONNECTOR DIMENSIONS

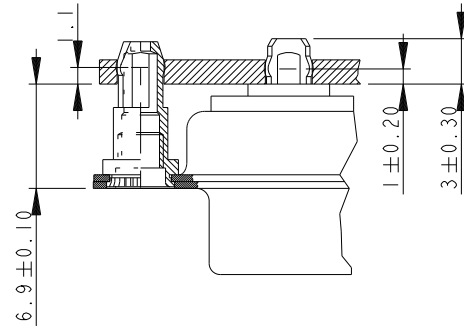
For PCB hole diameters see table I sheet I



SIDE VIEW FOR
LAYOUTS: E A B C



DETAIL OF PRESS FIT



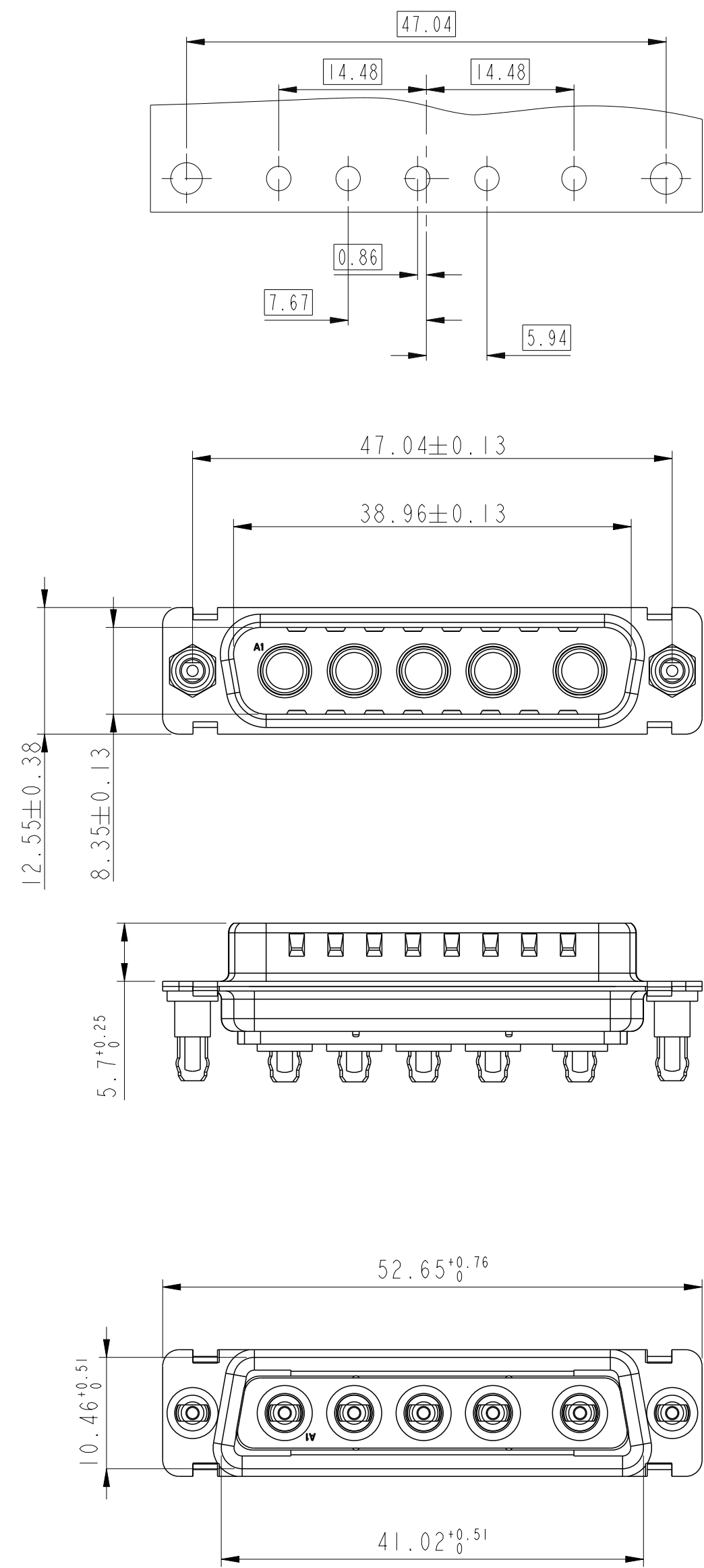
spec ref			dr 1, Product Eng		2015/06/16		projection		mm		size A2		scale 2:1	
tolerance std			eng Gregar Mathew		2020/12/04						ecn no		ELX-433502-1	
ISO 406			chr -		-						rel level		Released	
ISO 1101			appr Kuriakose, San		2020/12/06		product family		D SUB -					
surface - ISO 1302			linear		0.X ±0.3 0.XX ±0.1 0.XXX ±0.05		Amphenol FCI		title sub male dw full powerstraight press fit		dwg no C01-8639-2321C		rev D	
			angular 0°		±2°		cat. no. -		Product - Customer Drw		sheet 3 of 4			

PDS: Rev :D

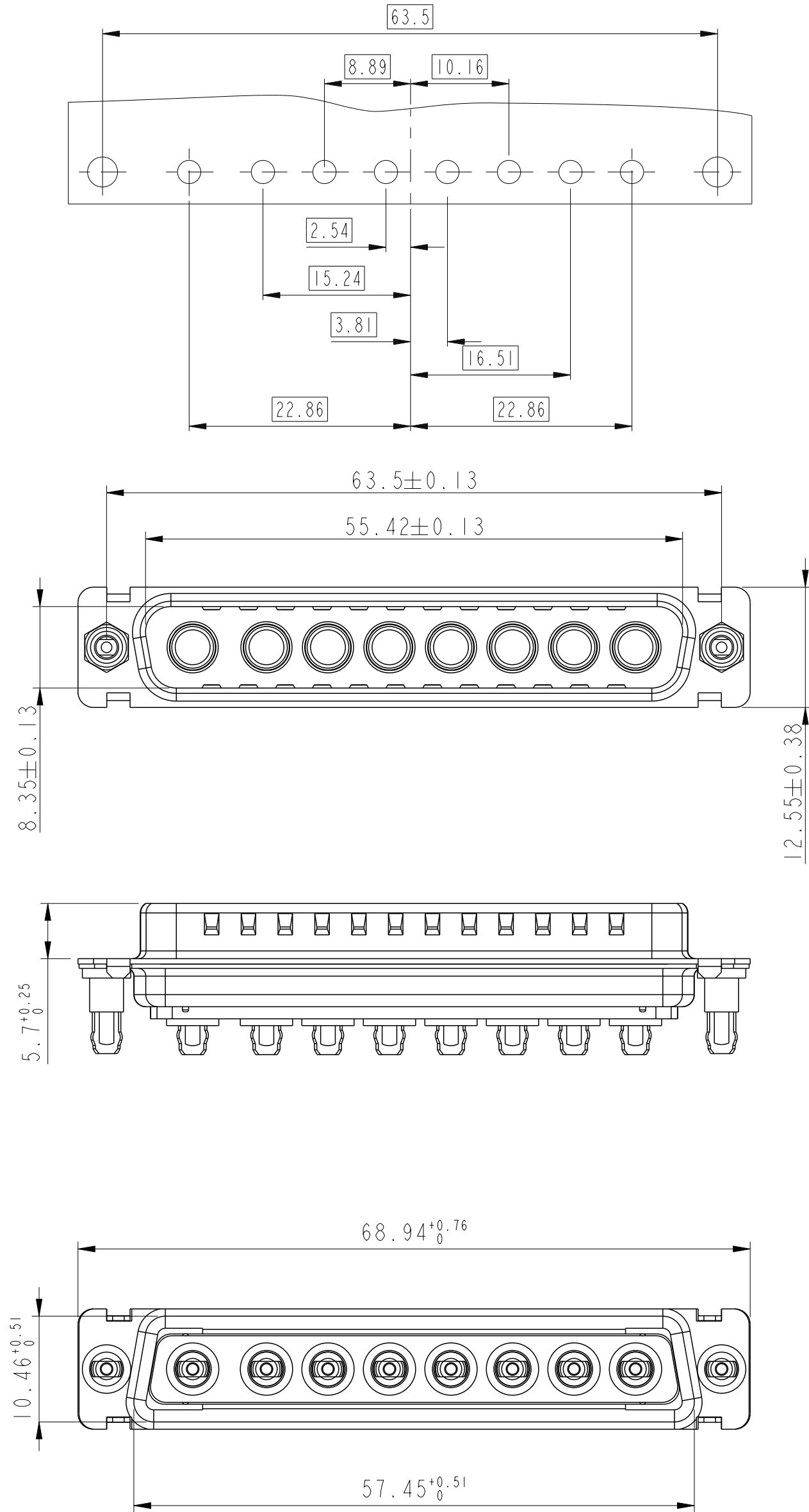
STATUS:Released



Printed: Dec 18, 2020

5W5
LAYOUT AND CONNECTOR DIMENSIONS
For PCB hole diameters see table I sheet I



8W8
LAYOUT AND CONNECTOR DIMENSIONS
For PCB hole diameters see table I sheet I



spec ref				dr		1, Product Eng		2015/06/16		projection		size		scale							
tolerance std		TOLERANCES UNLESS OTHERWISE SPECIFIED		eng		Gregar Mathew		2020/12/04						A2 2:1							
ISO 406		chr		-		-															
ISO 1101		appr		Kuriakose, San		2020/12/06															
										product family		D SUB -		ecn no		ELX-433502-1					
										rel level										Released	
surface		linear		0.X		±0.3		Amphenol FCI		title		sub male dw		dwg no		C01-8639-2321C		rev		D	
				0.XX		±0.1															
				0.XXX		±0.05															
ISO 1302		angular		0°		±2°				cat. no.		-		Product - Customer Drw		sheet 4 of 4					