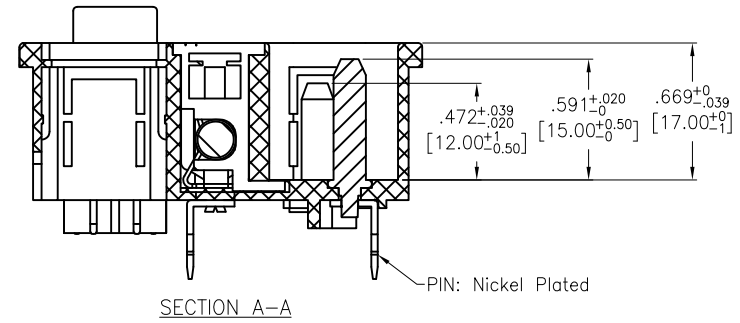
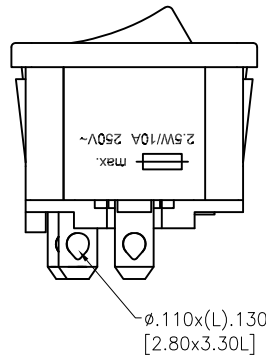
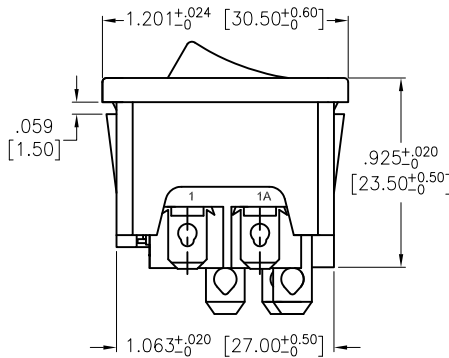
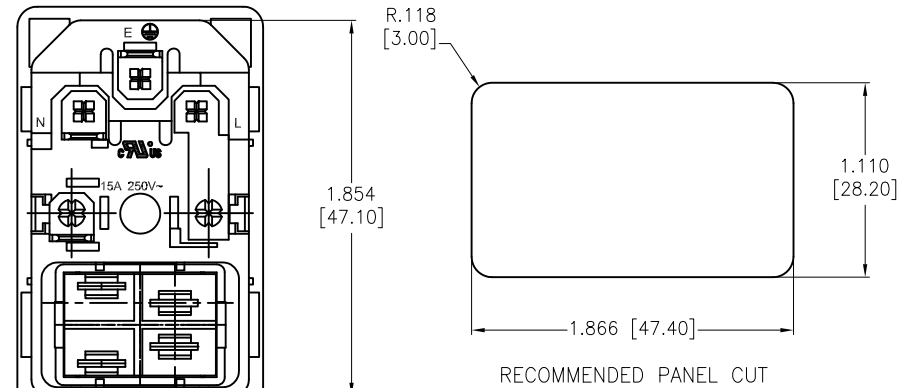
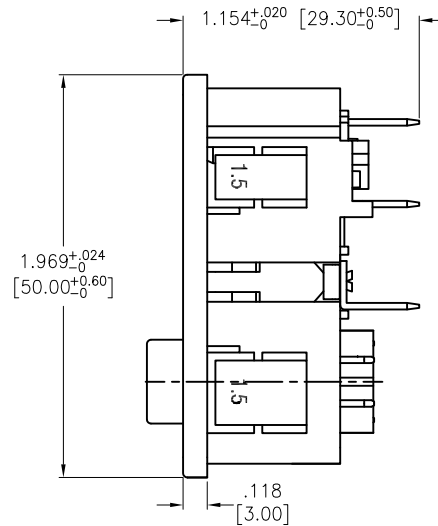
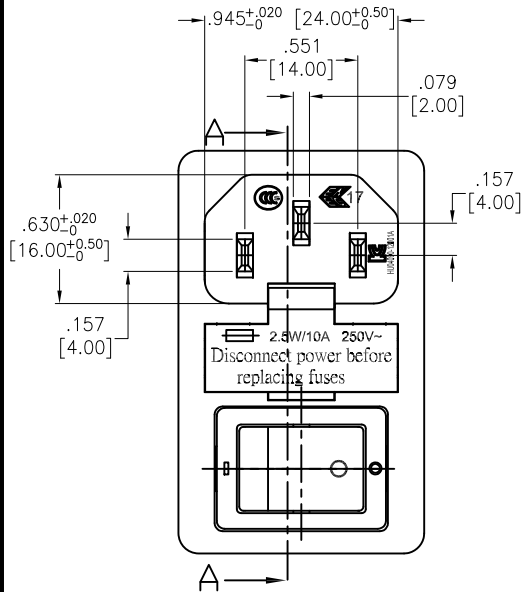


APPROVED: _____
 DATE: _____ TITLE: _____

Rev	AWO #	Description	Date	Appr
-		RELEASED	12/08/09	
A		UPDATE DRAWING	9/7/20	LH/KC
B		UPDATE DRAWING	11/4/20	SS



SPECIFICATIONS:

Material:
 Insulator: Nylon66, rated UL 94V-0
 Insulator color: Black
 Contacts: Copper Alloy
 Plating:
 Tin over Copper underplate

Electrical:
 Rating: 15A 250V~(C-ULus)
 15A 250V~(ENEC & CCC & KC)
 Insulation resistance: 100 Mohms min @ 500 VDC
 Dielectric withstanding voltage: 3000 VAC for 1 minute
 Environmental:
 Lead free, RoHS compliant.

RECOMMENDED FUSE SIZE
 5X20mm
 2.5W, 10A, 250V
 Fuse drawer accepts 1 Fuse only



UNLESS OTHERWISE SPECIFIED ALL DIMENSIONS ARE MM [INCHES] TOLERANCES: EXCEPT AS NOTED		ADAM TECH		909 Rahway Avenue, Union, NJ 07083 Phone: 908-687-5000 Fax: 908-687-5710	
INCHES		HOLES		TITLE	
.X	±.10	Ø.X	±.10	IEC CONNECTOR, ISOLATED FUSE 1.50mm SNAP IN, .187" [4.8] QC TERMINAL	
.XX	±.020	Ø.XX	±.015		
.XXX	±.015	Ø.XXX	±.010	SIZE X PART NO. IEC-GS-1-150	
APPROVALS		DATE		REV. B	
DRAWN	DY	12/08/09		REF: S00087C	
CHECKED				SCALE: NTS	
APPROVED				SHEET 1 OF 1	