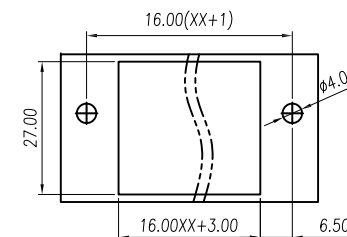
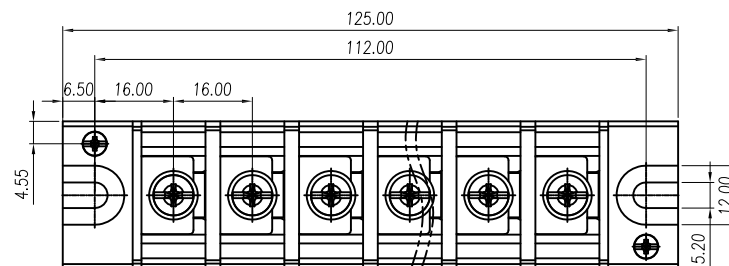


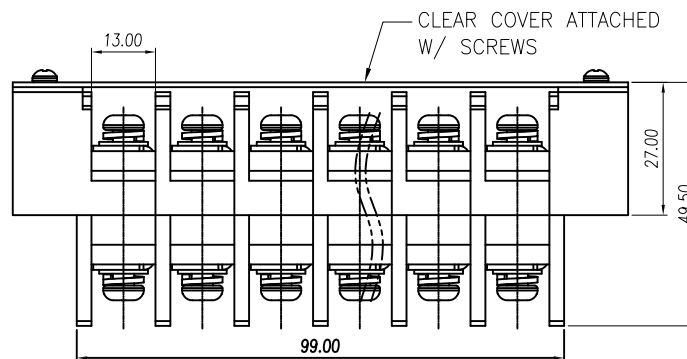
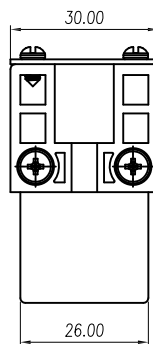
APPROVED: \_\_\_\_\_

DATE: \_\_\_\_\_ TITLE: \_\_\_\_\_

Rev	AWO #	Description	Date	Appr
-		RELEASED	11/26/18	
A		UPDATED DRAWING	2/18/23	JJ/LL1



RECOMMENDED MOUNTING CUT-OUT



Poles: 01 thru 15

SPECIFICATIONS:

Material:

Insulator: PBT, rated UL 94V-0 color: Black

Cover: PC, rated UL 94V-2

Contacts: Copper Alloy, Tin plated

Screw: M5 Steel, Zinc plated

Electrical:

Voltage rating: 600 V

Current rating: 65 A

Contact resistance: 20 mohms

Insulation resistance: 1000 Mohms / DC500V

Dielectric withstanding voltage: 2,200 VAC for 1 minute

Mechanical:

Wire Range: 14~6 AWG

Torque: 2.5Nm/25.0lb.in

Temperature Rating:

-40°C to +130°C

Environmental:

Lead free, RoHS compliant.



linear dimension( Tolerances Standard )								—	∕	⊥
variable	to	over	over	over	over	over	over	to	over	over
range	6	6	10	30	60	100	160	to	10	100
	to	to	to	to	to	to	to	to	to	to
tolerance	±0.20	±0.30	±0.50	±0.70	±1.00	±1.30	±1.60	0.10	0.30	0.60

UNLESS OTHERWISE SPECIFIED  
ALL DIMENSIONS ARE MILLIMETERS  
TOLERANCES: EXCEPT AS NOTED

SEE CHART

DRAWN	AY	11/26/18
CHECKED	AC	11/26/18
APPROVED		

THIS DRAWING CONTAINS INFORMATION THAT IS PROPRIETARY  
AND SHOULD NOT BE USED WITHOUT PRIOR WRITTEN  
PERMISSION FROM ADAM TECH

**ADAM**  
**TECH**

909 Rahway Avenue,  
Union, NJ 07083  
Phone: 908-687-5000  
Fax: 908-687-5710

TITLE  
TERMINAL BLOCK, .630 [16.00] PITCH  
W/ CLEAR COVER

SIZE X	PART NO. TBU-XX-W3-CCS	REV. A
REF: S00067C	SCALE: NTS	SHEET 1 OF 1