

BWP 2043W - Web panel



1060549
<https://www.phoenixcontact.com/us/products/1060549>

Please be informed that the data shown in this PDF document is generated from our Online Catalog. Please find the complete data in the user documentation. Our General Terms of Use for Downloads are valid.



Web panel with 10.92 cm / 4.3" TFT-display (analog resistive), 480 x 272 pixel(s) (WQVGA), 16.7 million colors, i.MX 6DualLite, 1 GHz, 1x USB Host 2.0, 1 x Ethernet (10/100 Mbps), RJ45, Yocto/Linux and user software: QT browser. (bus system: without)

Commercial Data

Item number	1060549
Packing unit	1 pc
Sales Key	DR17
Product Key	DRCEBF
Catalog Page	Page 468 (C-6-2019)
GTIN	4055626711386
Weight per Piece (including packing)	320 g
Weight per Piece (excluding packing)	320 g
Customs tariff number	84715000
Country of origin	IN

BWP 2043W - Web panel



1060549

<https://www.phoenixcontact.com/us/products/1060549>

Technical Data

Product properties

Product type	Operator panel
--------------	----------------

Computer data

Processor	i.MX 6DualLite, 1 GHz
Operating system	Yocto/Linux
RAM	1 GB DDR3 SDRAM
Data storage system	Flash eMMC, 4 GB

Display

Display type	10.92 cm / 4.3" TFT
Screen resolution	480 x 272 Pixel(s) (WQVGA)
Touch technology	analog resistive
Display lighting type	LED
Brightness	350 cd/m ²
MTBF	20000 h
Color spectrum	16.7 million colors
Reading angle left	70 °
Reading angle right	70 °
Reading angle top	50 °
Reading angle bottom	70 °

Software

User software	QT browser
---------------	------------

Interfaces

Interfaces	1x USB Host 2.0
Network	1 x Ethernet (10/100 Mbps), RJ45
Bus system	without

System properties

User software	QT browser
---------------	------------

Electrical properties

Supply

Power supply unit	24 V DC ±15 %
Typical current consumption	0.22 A

Mounting

Mounting type	Front mounting
---------------	----------------

Material specifications

BWP 2043W - Web panel



1060549

<https://www.phoenixcontact.com/us/products/1060549>

Material front plate	Plastic
Housing material	Plastic

Environmental and real-life conditions

Ambient conditions

Degree of protection	IP66 (front), IP20 (back)
Ambient temperature (operation)	0 °C ... 50 °C
Ambient temperature (storage/transport)	-20 °C ... 85 °C
Permissible humidity (operation)	10 % ... 95 % (non-condensing)
Permissible humidity (storage/transport)	10 % ... 95 % (non-condensing)
Shock	DIN EN 60068-2-27
Vibration (operation)	DIN EN 60068-2-6

Dimensions

External dimensions

Width / Height / Depth	120 mm / 89 mm / 5 mm (Dimensions of the front plate)
------------------------	---

Installation dimensions

Width / Height / Installation depth	111 mm / 80 mm / 31.5 mm (Installation cutout)
-------------------------------------	--

BWP 2043W - Web panel




1060549


<https://www.phoenixcontact.com/us/products/1060549>

Approvals


To download certificates, visit the product detail page: <https://www.phoenixcontact.com/us/products/1060549>




EAC
Approval ID: RU*-DE*08.B.01618



EAC-RoHS
Approval ID: RU*-DE*35.B.00394/20



cUL Listed
Approval ID: FILE E 196811



UL Listed
Approval ID: FILE E 196811

cULus Listed

BWP 2043W - Web panel

1060549

<https://www.phoenixcontact.com/us/products/1060549>



Classifications

ECLASS

ECLASS-11.0	27330201
ECLASS-12.0	27330201
ECLASS-13.0	27330201

ETIM

ETIM 8.0	EC001412
----------	----------

UNSPSC

UNSPSC 21.0	43211900
-------------	----------

BWP 2043W - Web panel

1060549

<https://www.phoenixcontact.com/us/products/1060549>



Accessories

TOUCH PEN - Touch pen

2701379

<https://www.phoenixcontact.com/us/products/2701379>

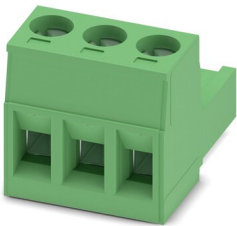


Touch pen for analog-resistive HMIs, silver coated. Delivery includes self-adhesive pen holder.

MSTB 2,5/ 3-ST-5,08 - PCB connector

1757022

<https://www.phoenixcontact.com/us/products/1757022>



PCB connector, nominal cross section: 2.5 mm², color: green, nominal current: 12 A, rated voltage (III/2): 320 V, contact surface: Tin, contact connection type: Socket, number of potentials: 3, number of rows: 1, number of positions: 3, number of connections: 3, product range: MSTB 2,5/...-ST, pitch: 5.08 mm, connection method: Screw connection with tension sleeve, screw head form: L Slotted, conductor/PCB connection direction: 0 °, locking clip: - Locking clip, plug-in system: COMBICON MSTB 2,5, locking: without, mounting: without, type of packaging: packed in cardboard

Phoenix Contact 2023 © - all rights reserved

<https://www.phoenixcontact.com>

Phoenix Contact USA
586 Fulling Mill Road
Middletown, PA 17057, United States
(+717) 944-1300
info@phoenixcon.com