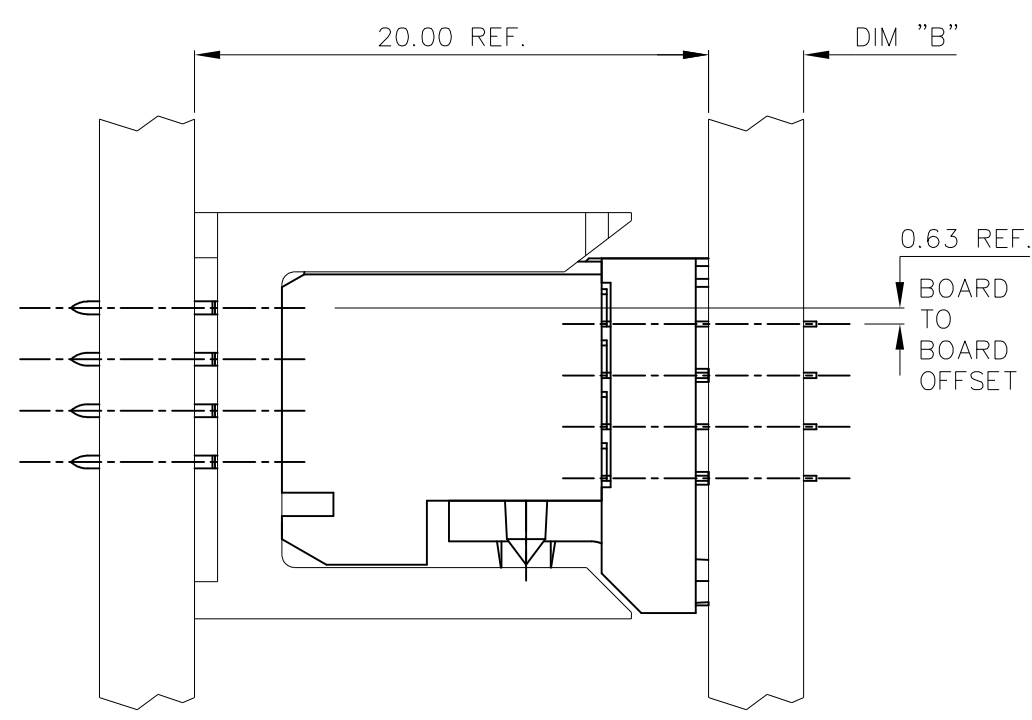
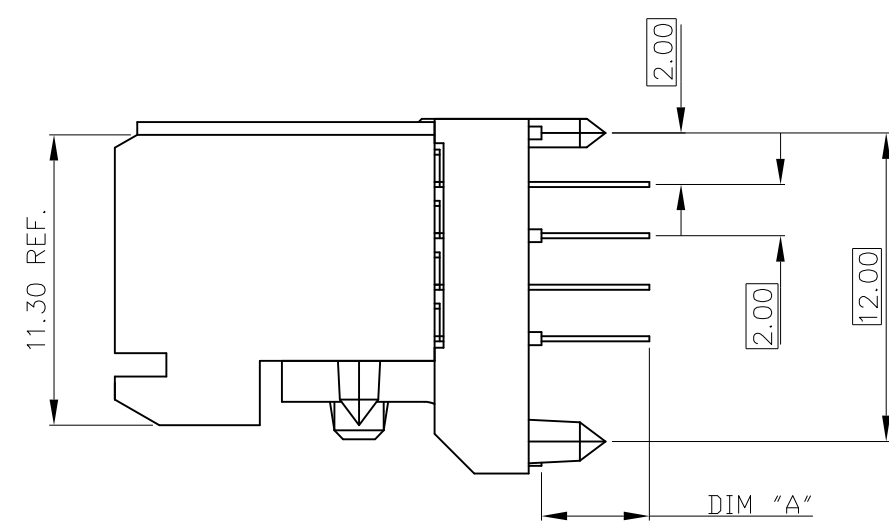
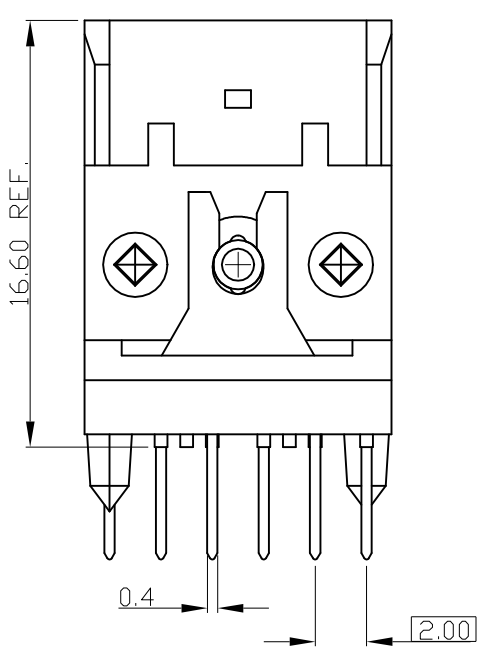
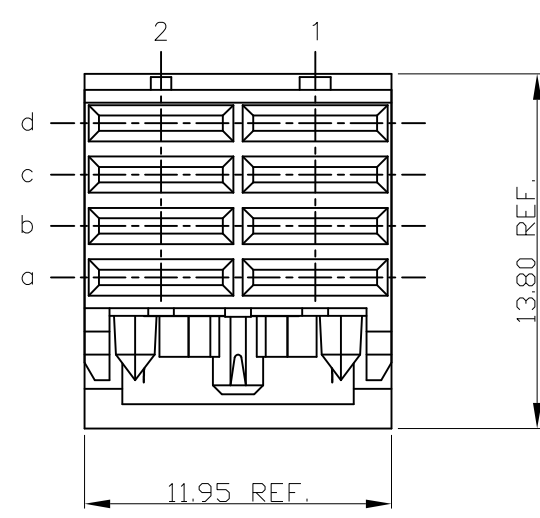




© 2016 AFCI



PRODUCT NUMBER
93239-X1Y
93239-X1YLF



PRODUCT NR:	PLATING CONTACT AREA:	UNDERPLATING
93239-1YYY	0.76 um GOLD OR GXT	1.3 um Ni MIN.
93239-2YYY	2 um GOLD	1.3 um Ni MIN.
93239-3YYY	1.3 um GOLD	1.3 um Ni MIN.
93239-9YYY	0.76 um GXT	1.3 um Ni MIN.
93239-1YYYLF	0.76 um GOLD	1.3 um Ni MIN.
93239-2YYYLF	2 um GOLD	1.3 um Ni MIN.
93239-3YYYLF	1.3 um GOLD	1.3 um Ni MIN.
93239-9YYYLF	0.76 um GXT	1.3 um Ni MIN.

mat'l. code				surface <input checked="" type="checkbox"/> ISO 1302 <input type="checkbox"/> ISO 406 <input type="checkbox"/> ISO 1101		projection	product family METRAL (tm)			
ltr	ecn no	dr	date	tolerances unless otherwise specified		MM	title VERT. PWR. RECEPT. ASS'Y 4X2			
E	V01598	JWS	12/07/00	angles	linear					
F	V03-0723	LP	0825'03				scale 1:1			
G	V05-1101	JRV	12/5/05	0±2°						
H	DG08-0171	TER	9/3/08	dr	STU STONGER	2/10/94				
J	ELX-N-26608	MZ	3/22/17	enrg	R. DOUTRICH	2/10/94				
				chr	STU STONGER	2/10/94				
				appd	STU STONGER	2/10/94	sheet 1 of 2 size A3			
sheet index		revision sheet		J	J					
				1	2		type Product Customer Drawing			

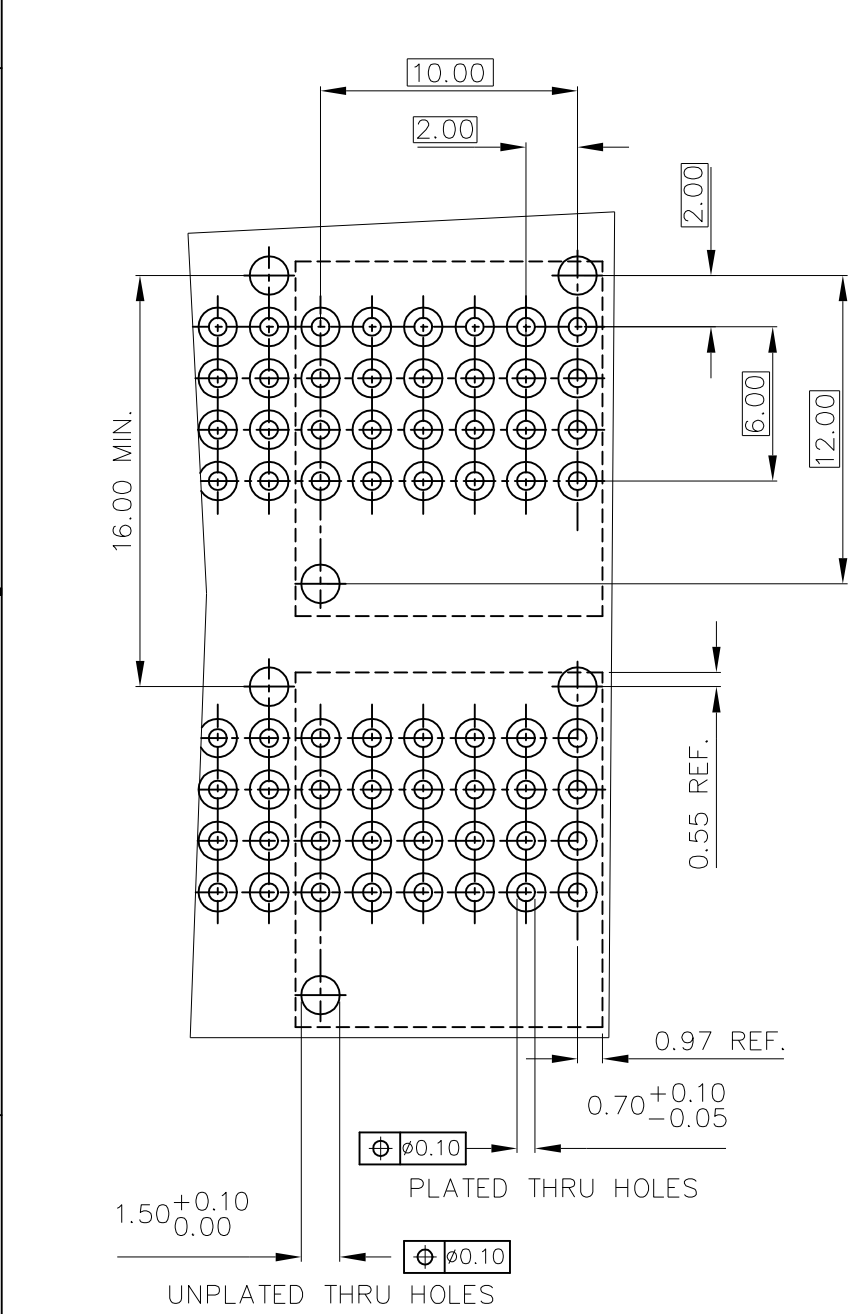


2016 AFCl



D

PRODUCT NUMBER	DIM "A" TAIL LGTH.	DIM "B" PCB THK.
93239-X11	2.65 REF.	1.6
93239-X12	3.45 REF.	2.4
93239-X13	4.25 REF.	3.2
93239-X11LF	2.65 REF.	1.6
93239-X12LF	3.45 REF.	2.4
93239-X13LF	4.25 REF.	3.2



RECOMMENDED HOLE PATTERN
COMPONENT SIDE

NOTES:

- CONNECTOR MATERIALS:
HOUSING: LCP, 30% GLASS FILLED,
UL 94-V0 COMPLIANT
TERMINAL: PHOSPHOR BRONZE ALLOY
- PLATING ON TAIL:
SOLDER-TO-BOARD TYPE
93239-XXX IS 2-8um SnPb
93239-XXYLF IS 2-8um Sn (LEAD FREE)
- PRODUCT SPECIFICATION:
GS-12-002
- APPLICATION SPECIFICATIONS:
BUS-20-059
GS-20-001
TA-941
- PRODUCT MARKING: (PART NUMBER & LOT CODE).
- INDICATED HOLES ARE UNPLATED.
- LOCATION PEG FEATURES MAY NOT BE AVAILABLE AS SHOWN FOR ASSYS W/ PRESS PEGS.
- TOP SURFACE OF PRESS BLOCK MAY EXTEND UP TO 0.4MM HIGHER THAN HOUSING. THIS MAY AFFECT THE TAIL LENGTH BEFORE APPLICATION TO A BOARD.
- DIMENSION APPLIES TO BOTH PRESS-FIT AND SOLDER TAIL TERMINATIONS.
- THESE PRODUCTS WHERE THE PART NUMBER ENDS IN "LF" MEET THE EUROPEAN UNION DIRECTIVES AND OTHER COUNTRY REGULATIONS AS DESCRIBED IN GS-22-008.

ALL PRODUCTS MANUFACTURED BEFORE APRIL 2006 WILL WITHSTAND EXPOSURE TO 240°C FOR 60 SECONDS IN A CONVECTION, INFAR-RED OR VAPOR PHASE REFLOW OVEN.

ALL PRODUCTS MANUFACTURED AFTER MARCH 2006 WILL WITHSTAND EXPOSURE TO 260°C FOR 60 SECONDS IN A CONVECTION, INFAR-RED OR VAPOR PHASE REFLOW OVEN.
- FOR LEAD FREE PART NUMBERS ADD "LF" SUFFIX. EXAMPLE: 93239-XXYYLF.

mat'l. code				surface ISO 1302 ✓	tolerance ISO 406 ISO 1101	projection MM	product family METRAL (tm)
ltr	ecn no	dr	date	tolerances unless otherwise specified		MM	title
J				angles	linear		VERT. PWR. RECEPT. ASS'Y 4x2
				0±2°	.X ±.3 .XX ±.10 .XXX ±.050		
		dr	J.R. VOLSTORF	12/5/05		Amphenol FCI	dwg no
		enr	J.R. VOLSTORF	12/5/05			sheet 2 of 2
		chr	J.R. VOLSTORF	12/5/05			size
		appd	J.R. VOLSTORF	12/5/05			A3
sheet index	revision sheet						type Product Customer Drawing