

# AI-XL 2,5-12 BU - Ferrule

3201987

<https://www.phoenixcontact.com/us/products/3201987>



Please be informed that the data shown in this PDF document is generated from our online catalog. Please find the complete data in the user documentation. Our general terms of use for downloads are valid.

Ferrule, Length contact range: 12 mm, sleeve length: 21.5 mm, color: blue



## Your advantages

- Previous methods of achieving correct conductor insulation are much more time consuming
- These ferrules can be used for short-circuit-proof cables

## Commercial data

Item number	3201987
Packing unit	100 pc
Minimum order quantity	100 pc
Sales key	BH34
Product key	BH341S
Catalog page	Page 485 (C-3-2019)
GTIN	4017918125066
Weight per piece (including packing)	0.3 g
Weight per piece (excluding packing)	0.3 g
Customs tariff number	85369010
Country of origin	DE

# AI-XL 2,5-12 BU - Ferrule



3201987  
<https://www.phoenixcontact.com/us/products/3201987>

## Technical data

### Product properties

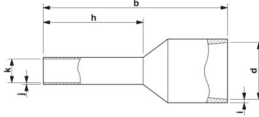
Product type	Cable end sleeve
Conductor category	stranded conductors, class 2, 5, 6 / B, C, K, M
Product property	Suitable for short-circuit-proof cables (NSGAFÖU) due to the significantly increased collar diameter
	UL certified
	Made from soft tin-plated electrolytic copper
	Correspond to the requirements of UL 486F
	Plastic collar made of polypropylene
	Halogen-free
	Long/short-term temperature: +105°C/+120°C

### Connection data

#### Conductor connection

Conductor cross section flexible max.	2.5 mm²
Conductor cross section AWG max.	14
Stripping length	17 mm

### Dimensions

Dimensional drawing	
Sleeve length	21.5 mm
Length contact range	12 mm
Maximum stripping length	17 mm
Ferrule diameter	2.3 mm
Sleeve wall thickness	0.15 mm
Insulating collar thickness	0.3 mm
Inner dimensions of the insulating collar	7.9 mm

### Material specifications

Color	blue (RAL 5015)
Material	CU-DHP
Flammability rating according to UL 94	HB
Coating	galvanically tin-plated
Surface characteristics	Tin-plated
Components	free from silicone and halogen

### Mechanical properties

# AI-XL 2,5-12 BU - Ferrule

3201987

<https://www.phoenixcontact.com/us/products/3201987>



## Technical data

Sleeve length	21.5 mm
---------------	---------

## Environmental and real-life conditions

### Ambient conditions

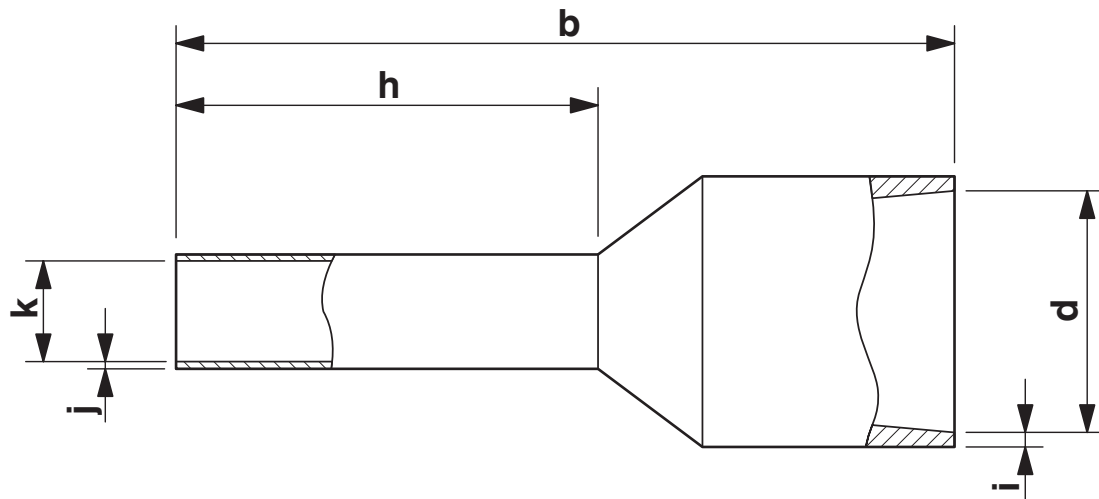
Optimum ambient temperature (storage/transport)	23.00 °C 50.00 % Storage in a dry and dark place in the original packaging is recommended
Permanent temperature	105 °C (-40 °C no load / 0 °C dynamic load)
Short-term temperature	120 °C

## Standards and regulations

Design according to standard	Color code in accordance with DIN 46228-4, UL 486F-E
------------------------------	--

## Drawings

Dimensional drawing



Sleeve length (b), length contact range (h), insulating collar inner dimension (d), sleeve diameter (k), insulating collar thickness (i), sleeve wall thickness (j)

# AI-XL 2,5-12 BU - Ferrule

3201987

<https://www.phoenixcontact.com/us/products/3201987>



## Approvals

To download certificates, visit the product detail page: <https://www.phoenixcontact.com/us/products/3201987>



**cULus Listed**

Approval ID: E488001

# AI-XL 2,5-12 BU - Ferrule



3201987  
<https://www.phoenixcontact.com/us/products/3201987>

## Classifications

### ECLASS

ECLASS-13.0	27400201
-------------	----------

### ETIM

ETIM 9.0	EC000005
----------	----------

### UNSPSC

UNSPSC 21.0	27121700
-------------	----------

# AI-XL 2,5-12 BU - Ferrule



3201987  
<https://www.phoenixcontact.com/us/products/3201987>

## Environmental product compliance

EU RoHS	
Fulfills EU RoHS substance requirements	Yes, No exemptions
China RoHS	
Environment friendly use period (EFUP)	EFUP-E
	No hazardous substances above the limits
EU REACH SVHC	
REACH candidate substance (CAS No.)	No substance above 0.1 wt%

Phoenix Contact 2025 © - all rights reserved  
<https://www.phoenixcontact.com>

Phoenix Contact USA  
586 Fulling Mill Road  
Middletown, PA 17057, United States  
(+717) 944-1300  
[info@phoenixcon.com](mailto:info@phoenixcon.com)