



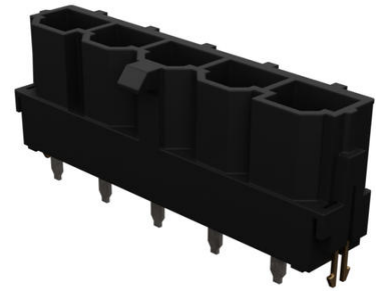
Part Number : [428195212](#)

Product Description : 10.00mm Pitch Mini-Fit Sr. Header, Single Row, Vertical, 1.57mm PCB Thickness, Tin (Sn) Plating, 5 Circuits, USE NYE LUBE ON MATING SURFACES

Series Number : 42819

Status : Active

Product Category : PCB Headers and Receptacles



Documents and Resources

Drawings

[428195212 sd.pdf](#)

[PK-42819-2375-001.pdf](#)

[STEP AP242](#)

[SOLIDWORKS](#)

[Creo](#)

[Symbol and Footprint \(Multi-Format\)](#)

Specifications


[AS-42815-001-001.pdf](#)

[PS-42815-001-001.pdf](#)

[TS-42815-001-001.pdf](#)

Product Environment Compliance

Compliance

GADSL/IMDS	Compliant with Exemption 44; 33
China RoHS	 per SJ/T 11365-2006
EU ELV	Not Relevant
Low-Halogen Status	Not Low-Halogen per IEC 61249-2-21
REACH SVHC	Not Contained per D(2025)7771-DC (04 Feb 2026)
EU RoHS	Compliant per EU 2015/863

Compliance Statements

- EU RoHS
- REACH SVHC
- Low-Halogen

Industry Documents

- IPC 1752A Class C
- IPC 1752A Class D
- Molex Product Compliance Declaration
- IEC-62474
- chemSHERPA (xml)

Substances of Interest

- PFAS

EU RoHS Certificate of Compliance

Additional Product Compliance Information

Part Details

General

Status	Active
Category	PCB Headers and Receptacles
Series	42819
Description	10.00mm Pitch Mini-Fit Sr. Header, Single Row, Vertical, 1.57mm PCB Thickness, Tin (Sn) Plating, 5 Circuits, USE NYE LUBE ON MATING SURFACES
Application	Power, Wire-to-Board
Comments	WHEN USING OVERALL TIN PLATED TERMINALS: FOR APPLICATIONS INVOLVING VIBRATION AND/OR THERMAL CYCLING, MOLEX STRONGLY RECOMMENDS THE USE OF NYE LUBRICANT (NYOGEL 7600) ON THE MATING SURFACES OF THE TERMINAL
Component Type	PCB Header
Product Name	Mini-Fit Sr.
UPC	800754382700

Agency

CSA	LR19980
UL	E29179

Electrical

Current - Maximum per Contact	50.0A
Voltage - Maximum	600V

Physical

Breakaway	No
Circuits (Loaded)	5
Circuits (maximum)	5
Color - Resin	Black
Durability (mating cycles max)	30
First Mate / Last Break	No
Flammability	94V-0
Glow-Wire Capable	No
Guide to Mating Part	No
Keying to Mating Part	No
Lock to Mating Part	Yes
Material - Metal	Brass
Material - Plating Mating	Tin
Material - Plating Termination	Tin
Material - Resin	High Temperature Thermoplastic
Net Weight	11.593/g
Number of Rows	1
Orientation	Vertical
Packaging Type	Tray
PCB Locator	Yes
PCB Retention	Yes
PCB Thickness - Recommended	1.57mm
PC Tail Length	3.50mm
Pitch - Mating Interface	10.00mm
Pitch - Termination Interface	10.00mm
Plating min - Mating	2.540µm
Plating min - Termination	2.540µm

Polarized to Mating Part	Yes
Polarized to PCB	Yes
Shrouded	Shrouded
Stackable	No
Temperature Range - Operating	-40° to +105°C
Termination Interface Style	Through Hole

Solder Process Data

Max-Duration	30
Lead-Free Process Capability	SMC&WAVE
Max-Cycle	3
Max-Temp	235

Mates With / Use With

Mates with Part(s)

Description	Part Number
10.00mm Pitch Mini-Fit Sr. Single Row Receptacle Housings	<u>42816</u>

This document was generated on Apr 28, 2026