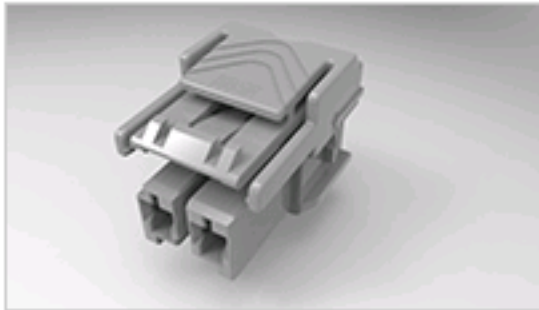




7-1971773-2 Product Details

 Share  Print  Email



 Active

 View 3D PDF

Power Triple Lock Connector System

1x2 plug housing Key C lgr

7-1971773-2 

TE Internal Number: 7-1971773-2

Product Highlights [View All](#)

- Power Triple Lock Product Line
- Wire-to-Wire
- Applies To Wire/Cable
- Connector
- Connector Assembly

Pricing & Availability 

Request Sample 

Add to My Part List 

Buy Product through
Distributor 

Feedback

Documents

Features

Compliance

Please Note:

Use the Product Drawing for all design activity

Product Type Features

| | |
|----------------|--------------------|
| Product Line | Power Triple Lock |
| Product Type | Connector |
| Connector Type | Connector Assembly |

Mechanical Attachment

| | |
|-----------------------|------------|
| Mating Retention Type | Latch(ing) |
|-----------------------|------------|

Electrical Characteristics

| | |
|-------------------------|-----|
| Operating Voltage (VAC) | 600 |
| Operating Voltage (VDC) | 600 |

Body Features

| | |
|------------------|------|
| Mating Retention | With |
|------------------|------|

Contact Features

| | |
|----------------|---------|
| Contact Layout | In-Line |
|----------------|---------|

Housing Features

| | |
|----------------------|--------------|
| Connector Style | Plug |
| Centerline (mm [in]) | 6.00 [0.236] |
| Housing Material | Nylon - GF |
| Housing Color | Light Gray |

Configuration Features

| | |
|---------------------|---|
| Number of Positions | 2 |
|---------------------|---|

Industry Standards

| | |
|--|---|
| RoHS/ELV Compliance  | RoHS compliant, ELV compliant |
| Lead Free Solder Processes  | Not reviewed for lead free solder process |
| RoHS/ELV Compliance History | Always was RoHS compliant |
| UL Flammability Rating | UL 94V-0 |

Identification Marking

| | |
|--------|---|
| Keying | C |
|--------|---|

Environmental

| | |
|---------------------------------|-------------------------|
| Operating Temperature (°C [°F]) | -55 - +150 [-67 - +302] |
| Halogen Free | Yes |

Conditions for Usage

| | |
|------------------|--|
| Applies To | Wire/Cable |
| Glow Wire Rating | High Temperature Part - Not Glow Wire |
| For Use With | Cap Housing, Receptacle (Socket) Contact |

Operation/Application

| | |
|---|--------------|
| Application Use | Wire-to-Wire |
| Contact Transmits (Typical Application) | Power |

Other

| | |
|-------|-----------------|
| Brand | TE Connectivity |
|-------|-----------------|

Related Products

Not quite the product you're looking for?

[Find Similar Products](#)

[View Part in Product Feature Selector](#)

[Check for Tooling](#)

Corporate Information

- [About TE](#)
- [Investors](#)
- [News Room](#)
- [Supplier Portal](#)
- [Careers](#)
- [Terms & Conditions](#)
- [Privacy Policy](#)
- [Global Accessibility Statement](#)

Quick Links

- [Distributor Inventory](#)
- [Product Cross Reference](#)
- [Documents & Drawings](#)
- [Product Compliance Support Center](#)
- [Site Map](#)

Customer Support

- [Email or Chat With Us](#)
- [Find a Phone Number](#)
- [Knowledge Base](#)
- [Manage Your Account](#)

Keep Me Informed

