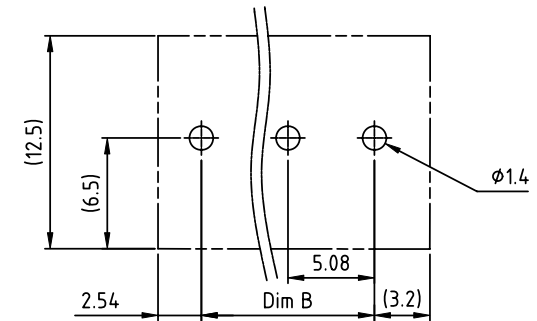
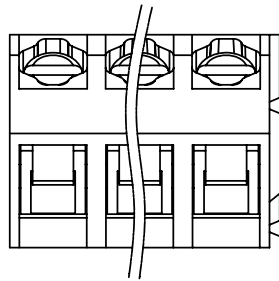
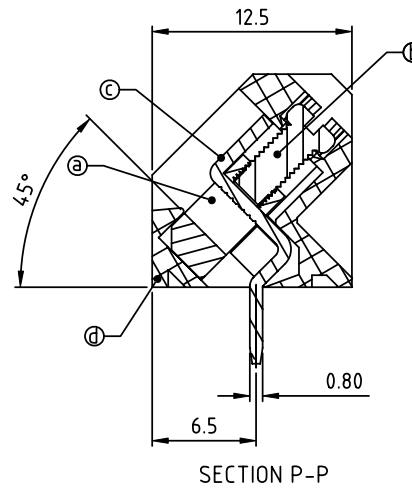
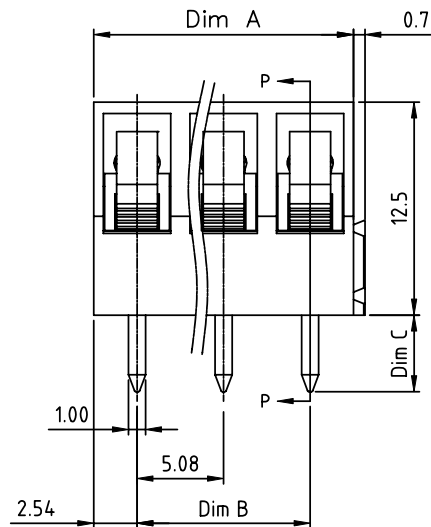




PRODUCT NUMBER	PITCH
TGxx51xxB0J0G	5.08 mm



RECOMMENDED P.C.B LAYOUT
TOP VIEW



- Material:
- ItemⒶ Clamp: Brass, Ni plated
 - ItemⒷ Terminal screw: Steel Zinc plating "-" slot type.
 - ItemⒸ Solder pin: Brass, Tin plated
 - ItemⒹ Terminal housing: Thermoplastic (UL94V-0)

- Electrical:
- Voltage rating: 300V/250V
 - Current rating: 15A/10A
 - Wire range: 0.34-4.0mm²
 - Solid wire(AWG): 12-24
 - Stranded wire(AWG): 12-24
 - Torque: 3.5 Lb-In / 0.4 N.m
 - Screw: M2.5
 - Wire strip length: 6-7mm
 - Withstanding Voltage: 1.6 KV/2 KV
 - Operating temperature: -40°C to +115°C
 - Soldering temperature: 260°C±5°C/5 Sec
 - Safety Approval:



N = Number of poles
Dim A = N x 5.08
Dim B = (N-1) x 5.08

poles	Tolerance
2-6p	±0.15
7-12p	±0.20
13-18p	±0.30
19-24p	±0.40

PART NO.: TG xx 5 1 x x B 0J0 G

End stackable	No. of poles	Body Color	DIM C Length	RoHS compliant
0	2 poles	Black (RAL9005)	0 4.5mm	(lead<4%)
2	3 poles	Red (RAL3001/D)	3 3.2mm	In copper Alloy
3	...	Orange (RAL2011/P)		
4	...	Yellow (RAL1018/A)		
5	...	Green (RAL6018/T)		
6	...	Blue (RAL5015/A)		
8	...	Grey (RAL7035/D)		
9	...	White (RAL1102)		
C	...	Green (RAL6018/U)		

mat'l. code				surface	tolerance	projection	product family		
ltr ecn no dr date				ASME Y14.5	ASME Y14.5		TERMINAL BLOCK		
				tolerances unless otherwise specified		MM	title		
				angles	X.±0.5		TERMINAL BLOCK		
				⌀	X.X±0.3		RISING CLAMP, 45D WIRE INLET, END STACKABLE		
				X*±1°	X.XX±0.1	scale	dwg no		
				dr	EVIN ZHONG	041514	sheet 1 of 1		
				enrg	EVIN ZHONG	041514	TGxx51xxB0J0G		
				chr	HANKE FENG	041514	A4		
				appd	SHI JUN	041514	type		
							CUSTOMER Drawing		
sheet index	revision sheet	A	1						