

K-1000 Series, Rated up to 1,000 Amps, 28 Vdc

Product Facts

- SPST NO, Double break
- Gasket sealed
- Meets many requirements of MIL-PRF-6106

Performance Data

Electrical Characteristics

Contact Arrangement —
SPST NO, Double Break

Rated Operating Voltage — 28 Vdc

Resistive Rating — 1,000 Amps

General Characteristics

Temperature Range —
-55°C to +71°C

Operating Cycles (Life) at Rated

Resistive Load — 50,000 cycles

Operating Cycles (Life)
Mechanical — 100,000 cycles

Weight, Max. — 2.75 lbs

Coil Characteristics

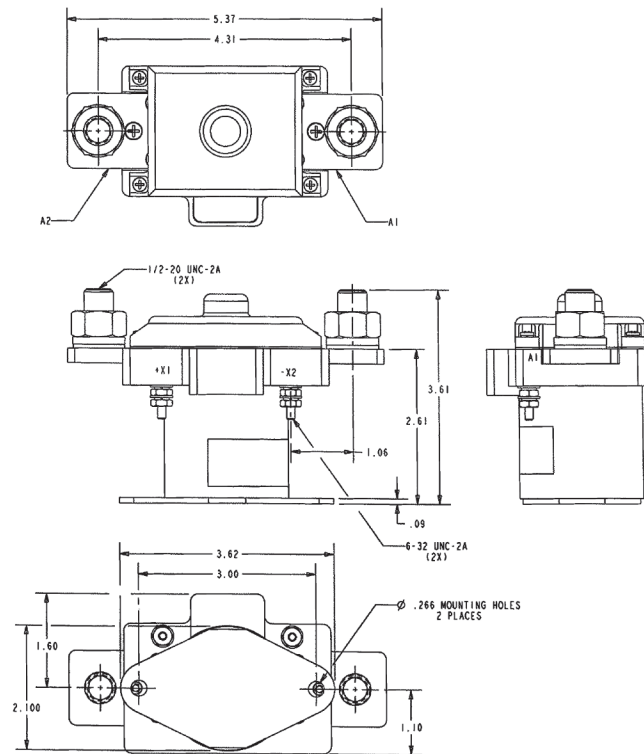
Duty Cycle — Continuous, economizing

Operating Voltage, Nom. — 28 Vdc

Pickup Voltage, Max. @25°C —
18 Vdc

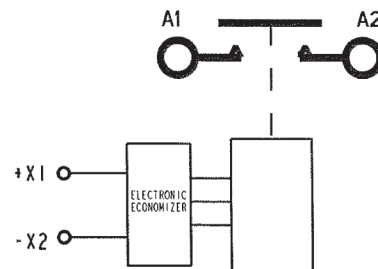
Dropout Voltage — 1 to 8 Vdc
Current, Inrush, Max. @ 30 Vdc — 7.0 Amps

Current, Hold, Max. @ 30 Vdc —
1.0 Amps



Mounting Style A

Circuit Configurations (Consult factory for other available circuit configurations)



Circuit Configuration 1

HARTMAN Part Number	Construction Type	Mounting Style	Coil Type	Circuit Config.	TE Part Number
K-1000A1F03	Gasket Sealed	A	Continuous	1	4-1616966-1

For factory-direct application assistance, phone 419-521-9500 or fax 419-526-2749.

Catalog 5-1773450-5
Revised 3-13

www.te.com

Dimensions are shown for reference purposes only. Specifications subject to change.

Dimensions are in millimeters
unless otherwise specified.

USA: +1 800 522 6752
Asia Pacific: +86 0 400 820 6015
UK: +44 800 267 666

For additional support numbers
please visit www.te.com