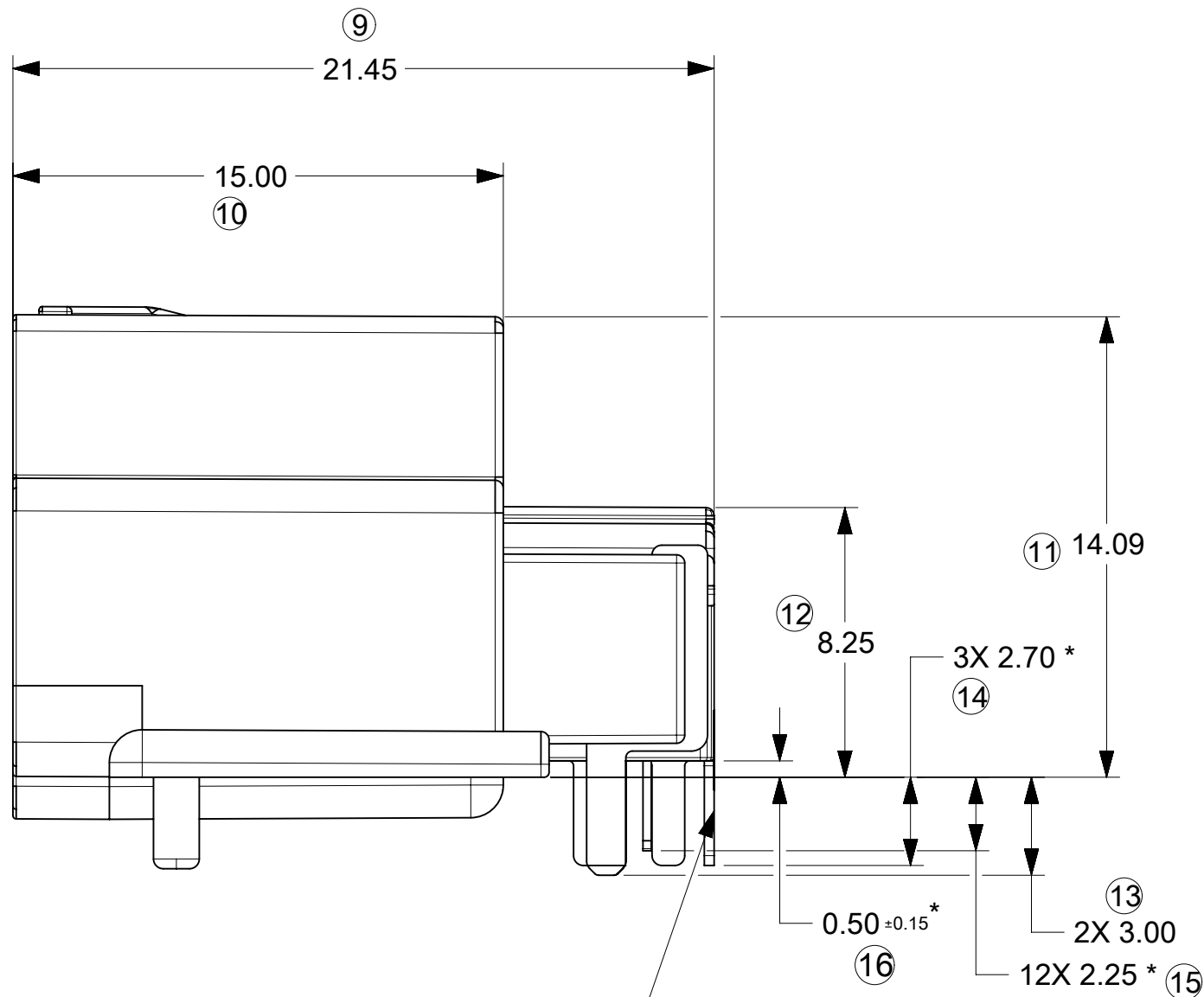
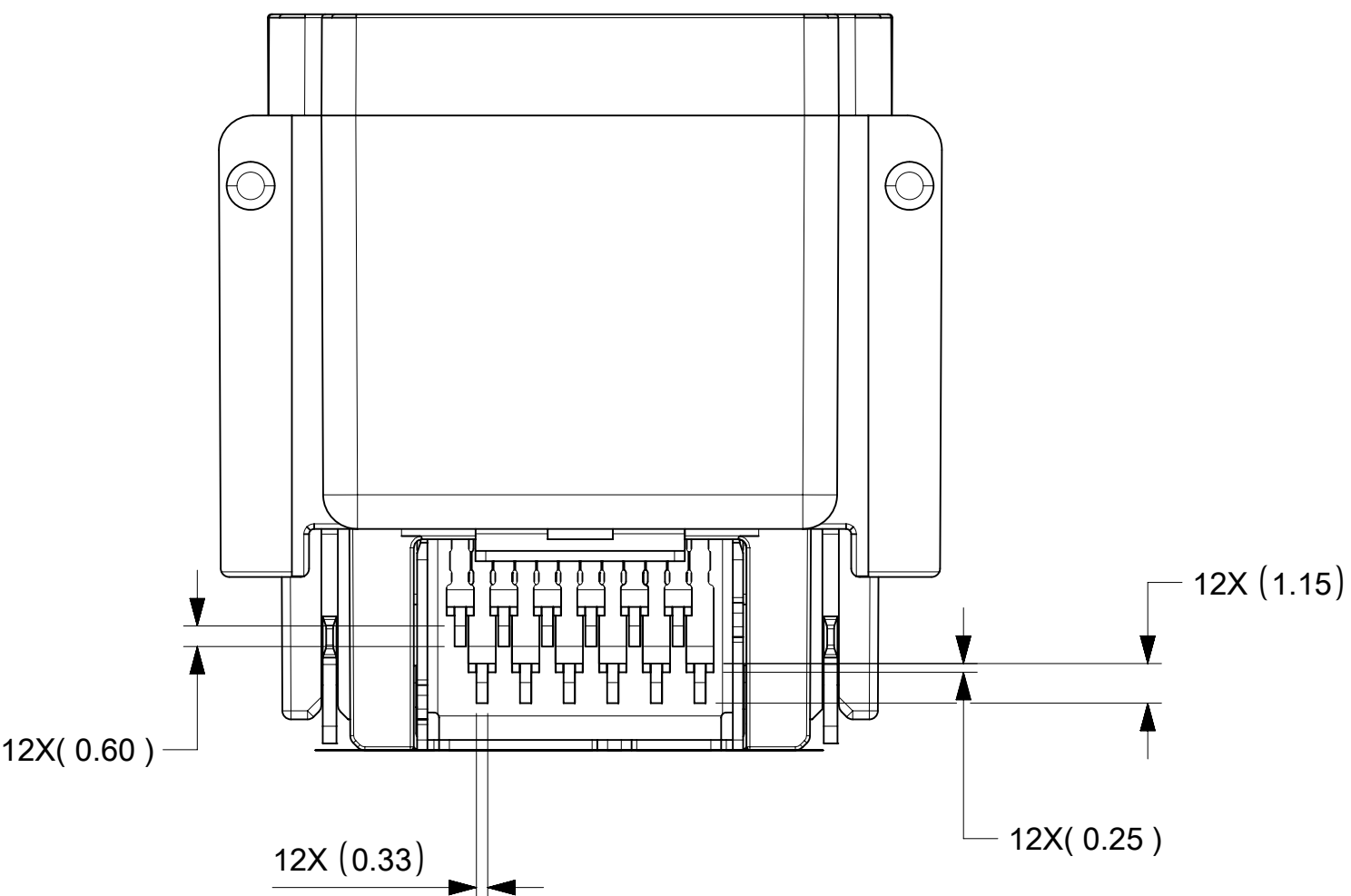


Note:-
* - Balloon Number 14, 15 & 16 is not applicable for 348618009, 8019, 8029, 8039, 8049.

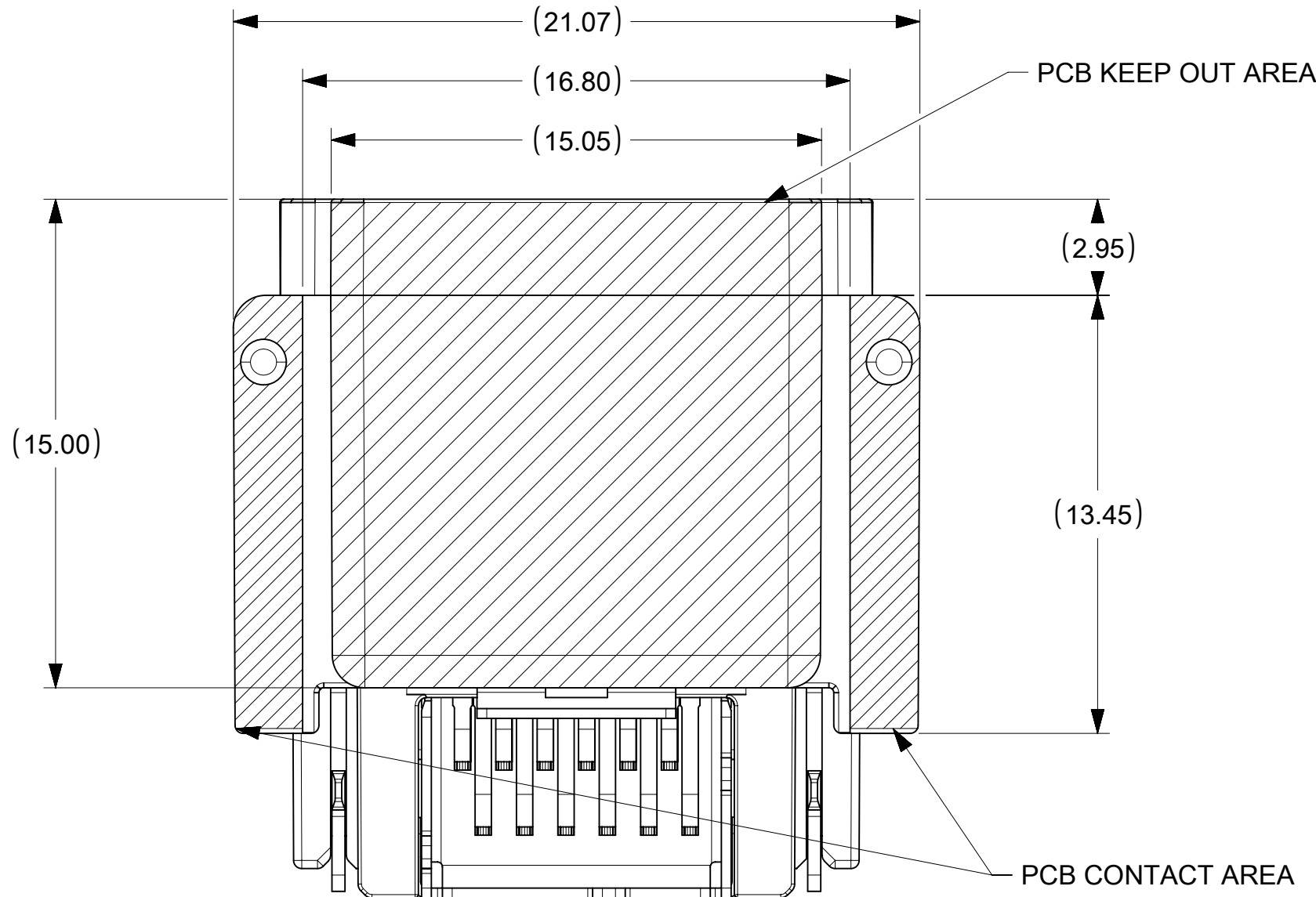


THIS SHIELD TAB IS REMOVED ON
PART NUMBERS 34861-1306, 34861-1316, 34861-1326
34861-7009, 34861-7019, 34861-7029
34861-7059

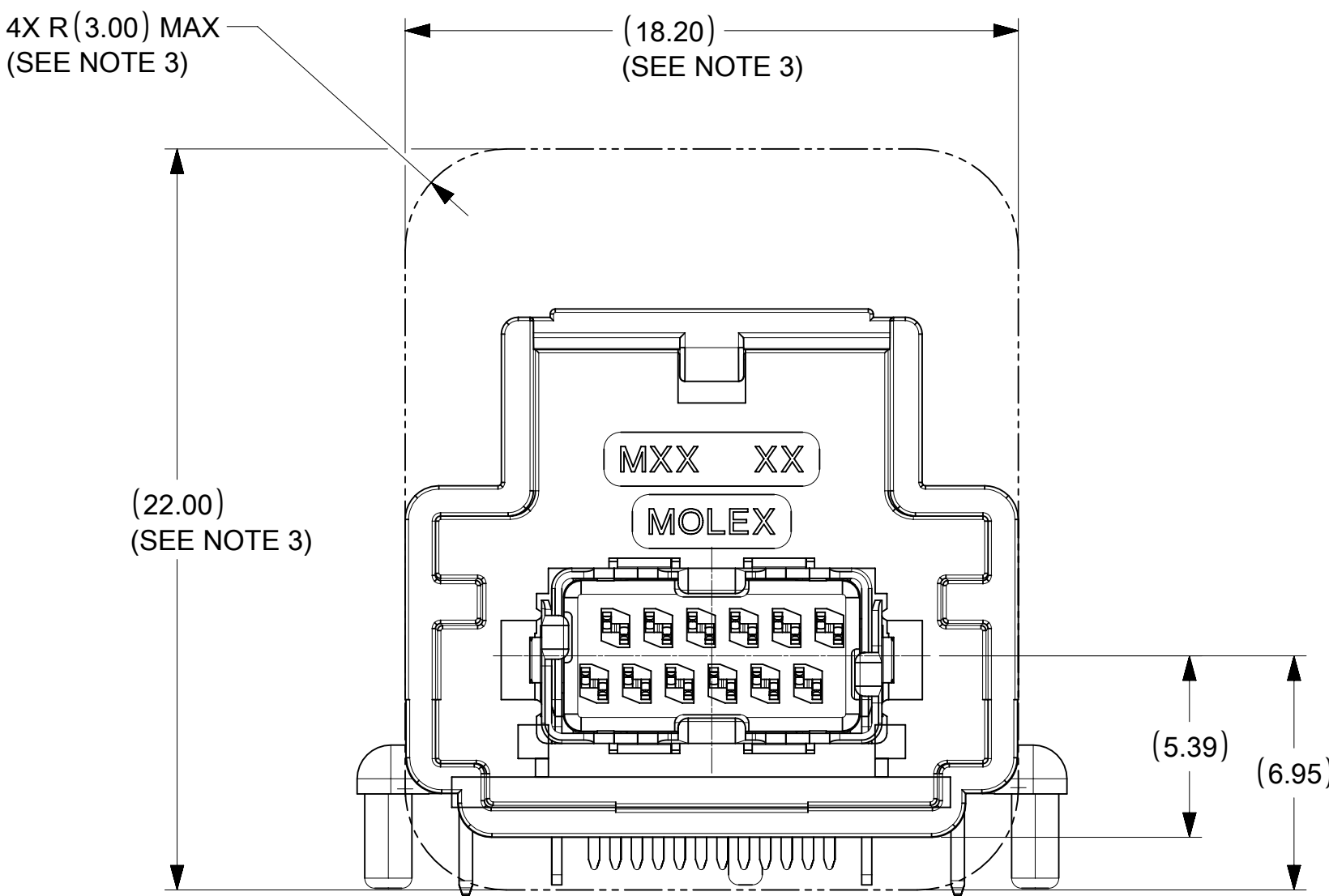
SMT VERSION *NOT QUALIFIED*



PCB CLEAROUT REGIONS



HEADER-TO-MODULE INTERFACE REQUIREMENTS



| | | | | | | | | | | | | | | | |
|---|--|-------|--|---|--|--|--|--|--|--|--|---------------|--|--|--|
| THIS DRAWING CONTAINS INFORMATION THAT IS PROPRIETARY TO MOLEX ELECTRONIC TECHNOLOGIES, LLC AND SHOULD NOT BE USED WITHOUT WRITTEN PERMISSION | | | | | | | | | | | | | | | |
| DIMENSION UNITS | | SCALE | | CURRENT REV DESC: | | | | | | | | | | | |
| mm | | 5:1 | | | | | | | | | | | | | |
| GENERAL TOLERANCES (UNLESS SPECIFIED) | | | | <div>molex</div> <div>12CKT HSALII RIGHT ANGLE HEADER HEADER ASSEMBLY</div> <div>PRODUCT CUSTOMER DRAWING</div> | | | | | | | | | | | |
| ANGULAR TOL ± ° | | | | | | | | | | | | | | | |
| 4 PLACES | | ± | | | | | | | | | | EC NO: 772885 | | | |
| 3 PLACES | | ± | | | | | | | | | | DRWN: PRAVEC2 | | | |

molex

12CKT HSALII RIGHT ANGLE HEADER
HEADER ASSEMBLY

PRODUCT CUSTOMER DRAWING

| | | | |
|-----------------|----------|----------|----------|
| DOCUMENT NUMBER | DOC TYPE | DOC PART | REVISION |
| 348611406 | PSD | 000 | C11 |

| | | |
|-----------------|----------------|--------------|
| MATERIAL NUMBER | CUSTOMER | SHEET NUMBER |
| SEE SHEET 1 | GENERAL MARKET | 2 OF 4 |

| | | | | |
|-----------------|----|--------------|------------|----------|
| DOCUMENT STATUS | P1 | RELEASE DATE | 2024/01/05 | 14:27:53 |
|-----------------|----|--------------|------------|----------|

3X 0.70 ±0.08

2X 0.70 ±0.08

3.4925

3.4925

10X 1.27

1.00

THIS HOLE IS REMOVED ON 2 SHIELD TAB VERSION
FOR PART NUMBERS 34861-1306, 34861-1316, 34861-1326
34861-7009, 34861-7019, 34861-7025

12X Ø0.7 ±0.08
(Ø0.6 ± 0.08 mm for all Existing Customers)

Ø0.13 F G

CIRCUIT #1

CIRCUIT #6

6X 2.00

3X 1.40 ±0.13

4.75

2X 2.85

2X 1.90 ±0.13

F

2.35

4.10

15.30MAX

6.00

CIRCUIT #7

4.60

4.60

7.30

7.30

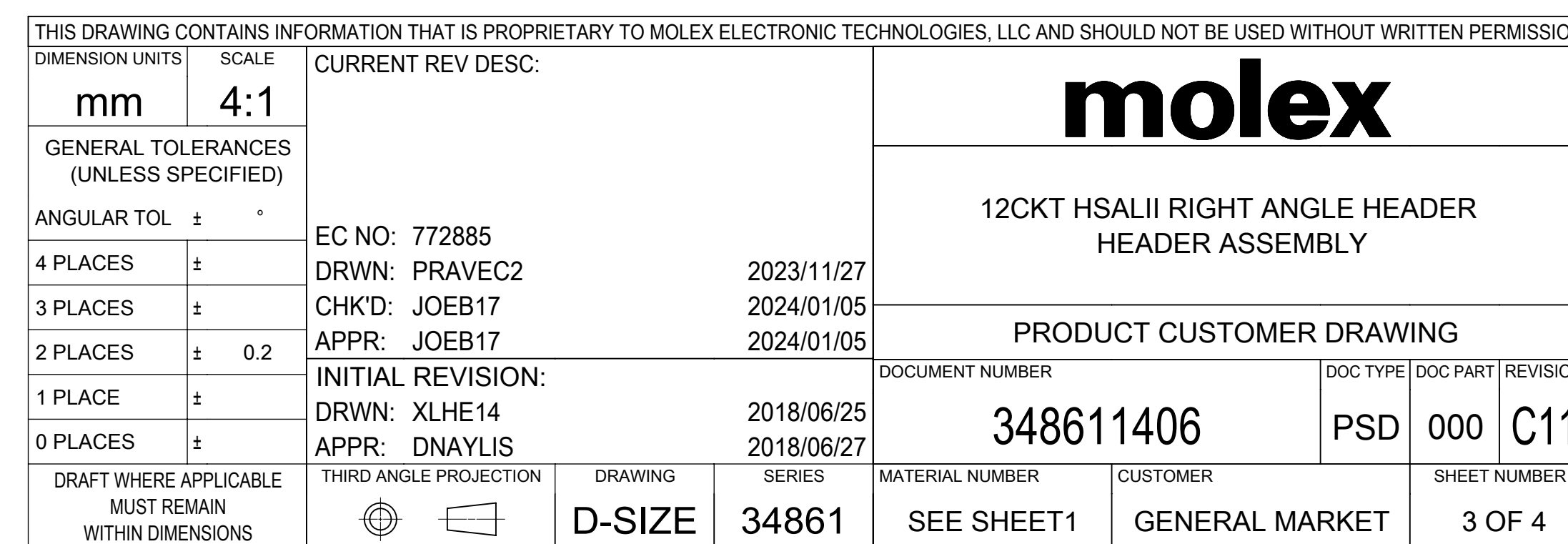
15.60 ±0.08

G

CIRCUIT #12

ALL THROUGH HOLE DIMENSIONS ARE
APPLICABLE FOR ALL KEY OPTIONS

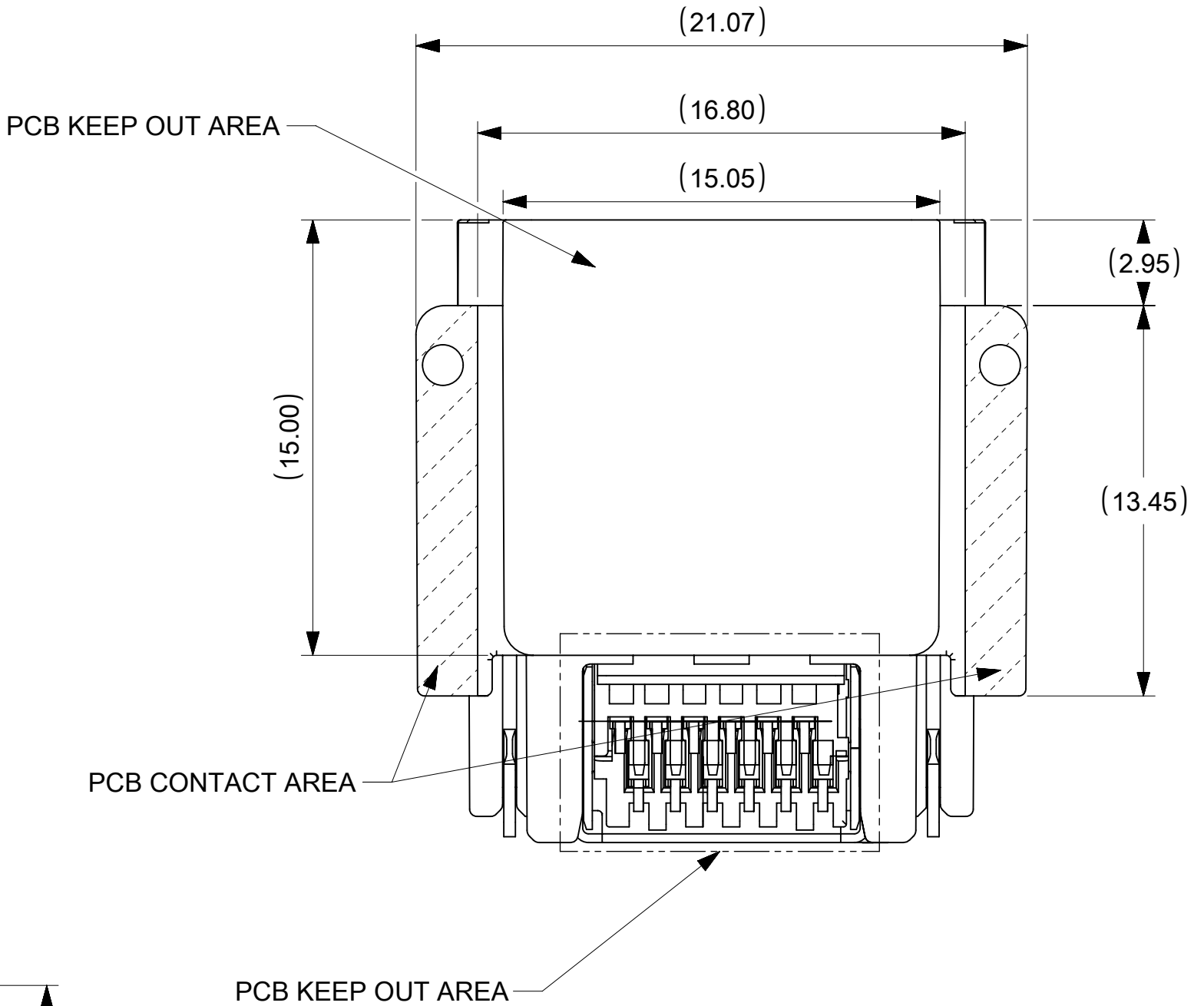
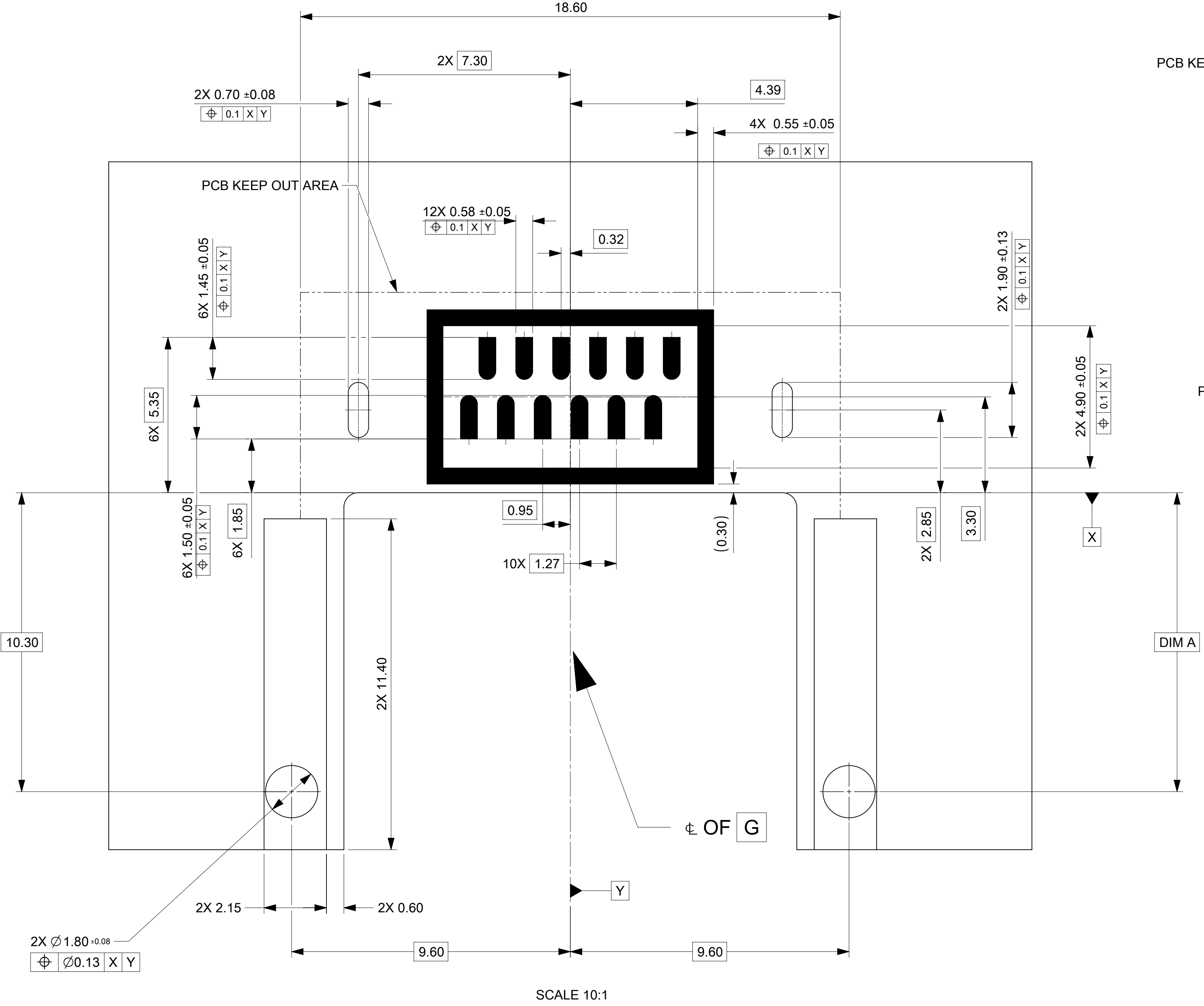
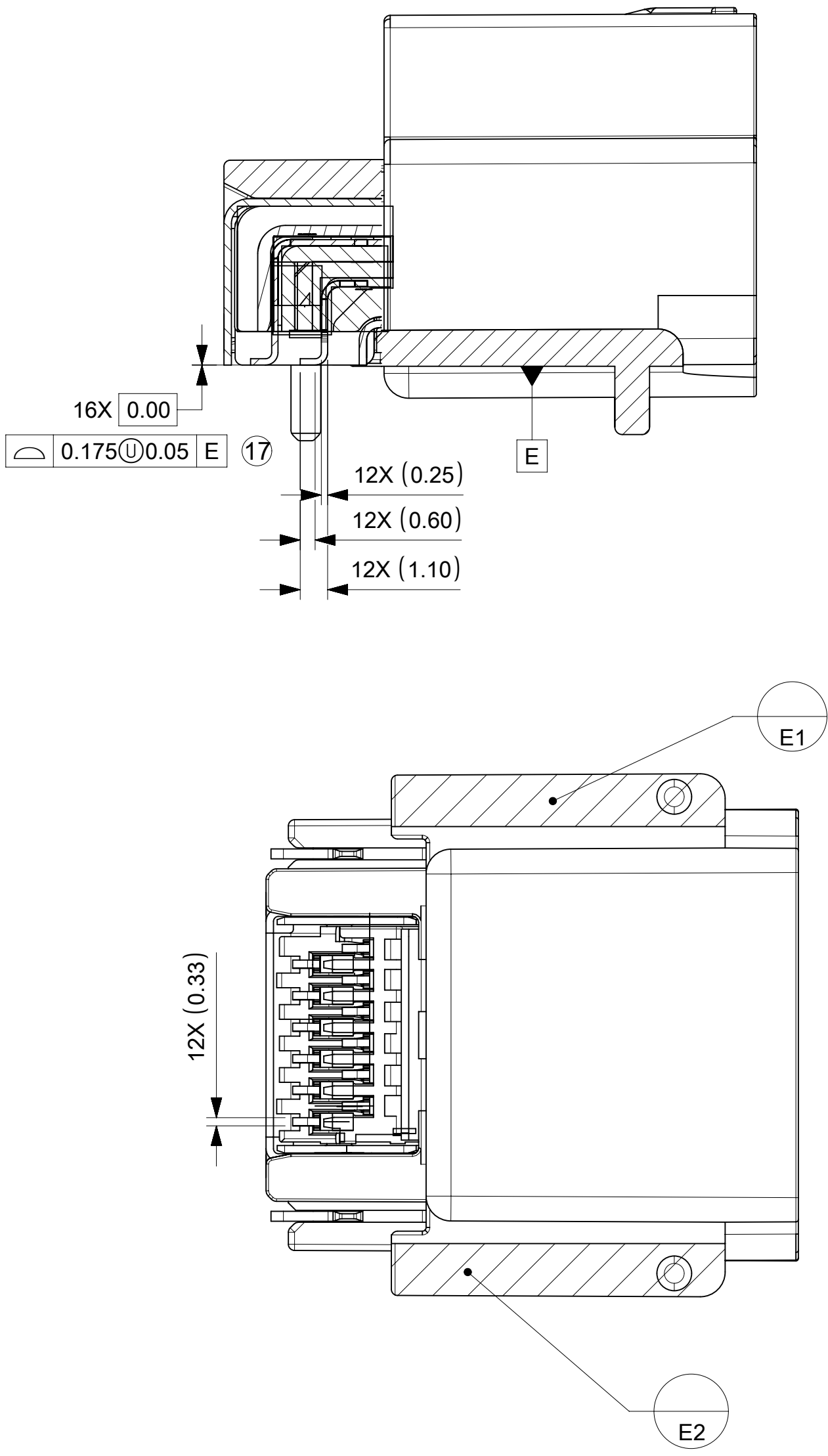
DETAIL G
SCALE 13:1



RECOMMENDED SMT PCB LAYOUT
HEADER SIDE PCB

SMT VERSION WITH
HIGH SPEED INSERTS

SMT VERSION HIGH SPEED INSERT 34861-8009, 8019, 8029, 8039



SCALE 10:1

| KEY OPTION | DIM A |
|------------|-------|
| A | 10.30 |
| B | 6.30 |
| C | 2.30 |

THIS DRAWING CONTAINS INFORMATION THAT IS PROPRIETARY TO MOLEX ELECTRONIC TECHNOLOGIES, LLC AND SHOULD NOT BE USED WITHOUT WRITTEN PERMISSION

| | | | | |
|--|-------|------------------------|---------|--------|
| DIMENSION UNITS | SCALE | CURRENT REV DESC: | | |
| mm | 10:1 | | | |
| GENERAL TOLERANCES (UNLESS SPECIFIED) | | | | |
| ANGULAR TOL | ± ° | | | |
| 4 PLACES | ± | | | |
| 3 PLACES | ± | | | |
| 2 PLACES | ± 0.2 | | | |
| 1 PLACE | ± | | | |
| 0 PLACES | ± | | | |
| DRAFT WHERE APPLICABLE MUST REMAIN WITHIN DIMENSIONS | | THIRD ANGLE PROJECTION | DRAWING | SERIES |
| | | | D-SIZE | 34861 |

EC NO: 772885
DRWN: PRAVEC2
CHK'D: JOEB17
APPR: JOEB17

2023/11/27
2024/01/05
2024/01/05

INITIAL REVISION:
DRWN: XLHE14
APPR: DNAYLIS

2018/06/25
2018/06/27

12CKT HSALII RIGHT ANGLE HEADER
HEADER ASSEMBLY

PRODUCT CUSTOMER DRAWING

| | | | |
|-----------------|----------------|--------------|----------|
| DOCUMENT NUMBER | DOC TYPE | DOC PART | REVISION |
| 348611406 | PSD | 000 | C11 |
| MATERIAL NUMBER | CUSTOMER | SHEET NUMBER | |
| | GENERAL MARKET | 4 OF 4 | |

| | | | | |
|-----------------|----|--------------|------------|----------|
| DOCUMENT STATUS | P1 | RELEASE DATE | 2024/01/05 | 14:27:53 |
|-----------------|----|--------------|------------|----------|