

Description: 1608 0.7-0.9GHz Low Pass Filter
PART NUMBER: LPF1608LL55R0709A
Features:

- Compact size : 1.60x0.80x0.60mm
- RoHS compliant

Applications:

- LTE(0.7-2.7GHz)

ELECTRICAL SPECIFICATIONS

| DESCRIPTION | Value |
|-----------------------|----------------------------------------------------------------------------------------------------------|
| Pass Band | 698~960 MHz |
| Impedance | 50Ω |
| Insertion Loss | 0.60(Max) @ 698~830 MHz 0.70(Max) @ 830~900 MHz 0.75(Max) @ 900~915 MHz 0.90(Max) @ 915~960 MHz |
| V.S.W.R | 1.6(Max) |
| Attenuation | 30dB Min @ 1554~1830 MHz 35dB Min @ 2097~2745 MHz |
| Operating Temperature | -40 ~ 85°C |

In the effort to improve our products, we reserve the right to make changes judged to be necessary.

CONFIDENTIAL AND PROPRIETARY INFORMATION

This document contains confidential and proprietary information of Pulse Electronics, Inc. (Pulse) and is protected by copyright, trade secret and other state and federal laws. Its receipt or possession does not convey any rights to reproduce, disclose its contents, or to manufacture, use or sell anything it may describe. Reproduction, disclosure or use without specific written authorization of Pulse is strictly forbidden.

For more information:

Pulse Worldwide Headquarters
15255 Innovation Drive #100
San Diego, CA 92128
USA
Tel: 1-858-674-8100

Pulse/Larsen Antennas
18110 SE 34th St Bldg 2 Suite 250
Vancouver, WA 98683
USA
Tel: 1-360-944-7551

Europe Headquarters
Pulse GmbH & Co, KG
Zeppelinstrasse 15
Herrenberg, Germany
Tel: 49 7032 7806 0

Pulse (Suzhou) Wireless Products Co, Inc.
99 Huo Ju Road(#29 Bldg, 4th Phase
Suzhou New District
Jiangsu Province, Suzhou 215009 PR China
Tel: 86 512 6807 9998

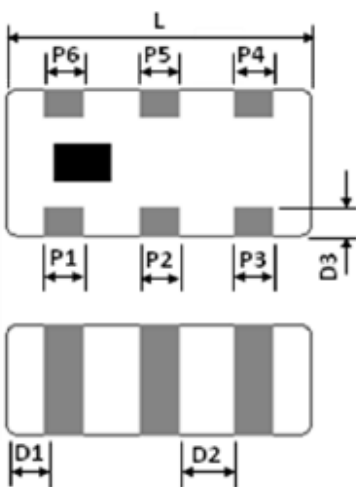


Description: 1608 0.7-0.9GHz Low Pass Filter

PART NUMBER: LPF1608LL55R0709A

MECHANICAL DIMENSION

Outline



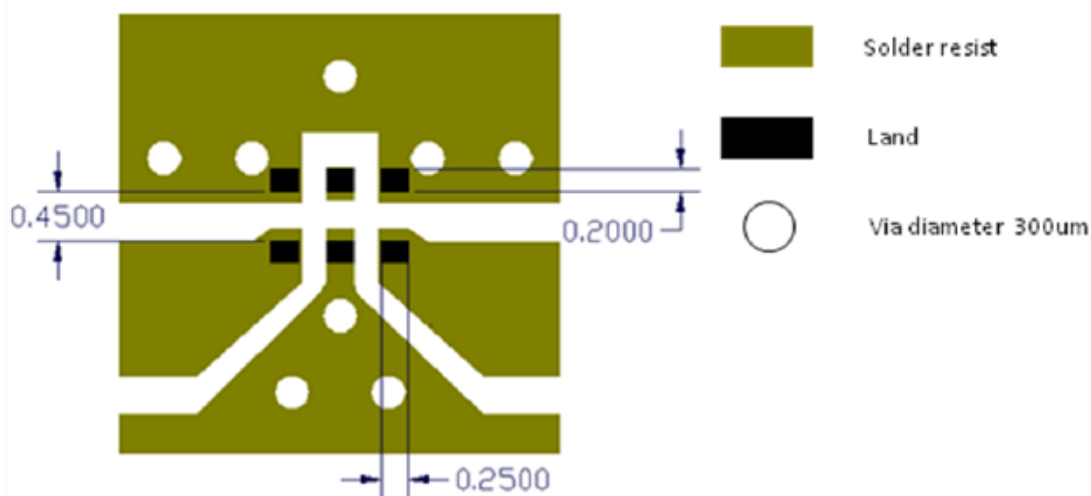
Termination

| Terminal name | function |
|---------------|----------|
| P1 | GND |
| P2 | NC |
| P3 | GND |
| P4 | Output |
| P5 | GND |
| P6 | Input |

Mechanical

| | Dimension |
|---------|------------|
| L (mm) | 1.60 ±0.15 |
| W (mm) | 0.80 ±0.15 |
| T (mm) | 0.60 ±0.15 |
| P1 (mm) | 0.20 ±0.15 |
| P2 (mm) | 0.20 ±0.15 |
| P3 (mm) | 0.20 ±0.15 |
| P4 (mm) | 0.20 ±0.15 |
| P5 (mm) | 0.20 ±0.15 |
| P6 (mm) | 0.20 ±0.15 |
| D1 (mm) | 0.20 ±0.15 |
| D2 (mm) | 0.30 ±0.10 |
| D3 (mm) | 0.15 ±0.10 |

Reference design of EVB



Line width should be designed to match 50Ω characteristic impedance, depending on PCB material and thickness .

In the effort to improve our products, we reserve the right to make changes judged to be necessary.

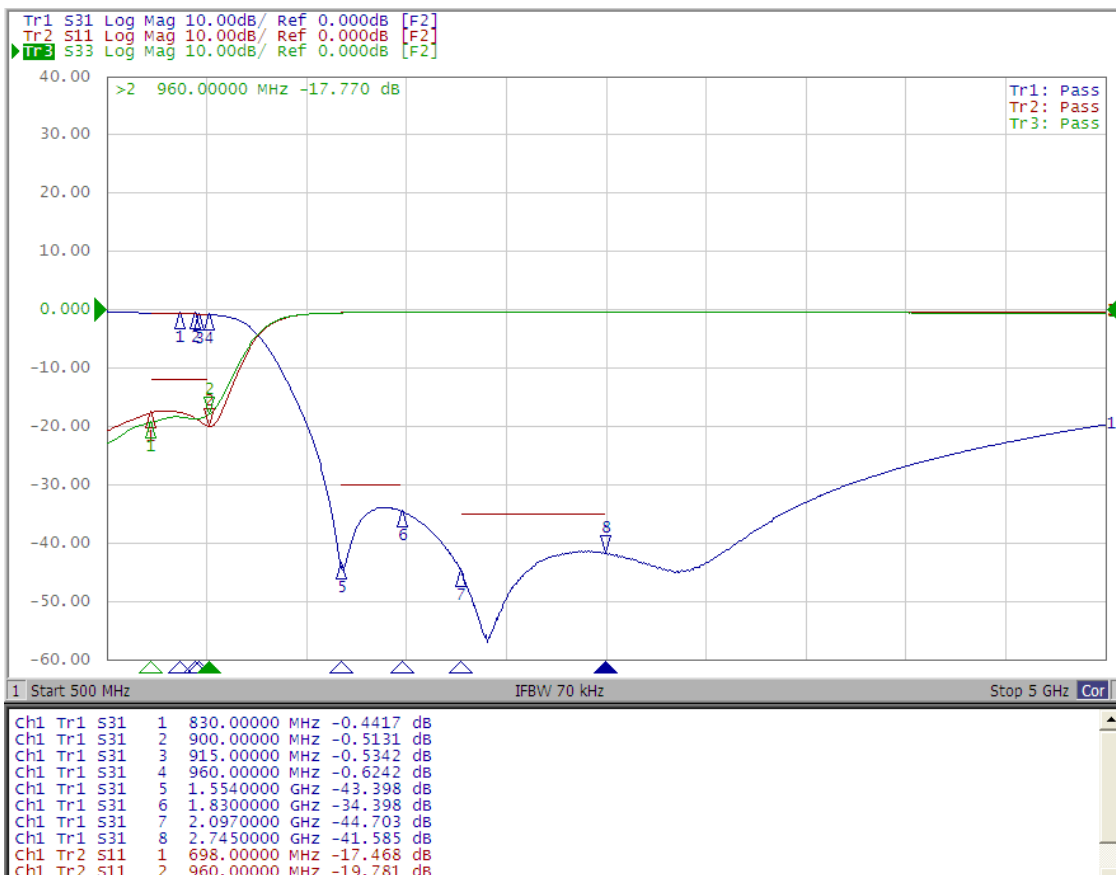
CONFIDENTIAL AND PROPRIETARY INFORMATION

This document contains confidential and proprietary information of Pulse Electronics, Inc. (Pulse) and is protected by copyright, trade secret and other state and federal laws. Its receipt or possession does not convey any rights to reproduce, disclose its contents, or to manufacture, use or sell anything it may describe. Reproduction, disclosure or use without specific written authorization of Pulse is strictly forbidden.

Description: 1608 0.7-0.9GHz Low Pass Filter

PART NUMBER: LPF1608LL55R0709A

ELECTRICAL PERFORMANCES



- Measured on Agilent E5071C Network Analyzer
- Input port : Port 1 (Return loss : S11)
- Output port : Port 3 (Return loss : S33)
- Insertion loss : S31

Frequency Characteristics

In the effort to improve our products, we reserve the right to make changes judged to be necessary.

CONFIDENTIAL AND PROPRIETARY INFORMATION

This document contains confidential and proprietary information of Pulse Electronics, Inc. (Pulse) and is protected by copyright, trade secret and other state and federal laws. Its receipt or possession does not convey any rights to reproduce, disclose its contents, or to manufacture, use or sell anything it may describe. Reproduction, disclosure or use without specific written authorization of Pulse is strictly forbidden.

Description: 1608 0.7-0.9GHz Low Pass Filter

PART NUMBER: LPF1608LL55R0709A

REVISION HISTORY

| Revision | Date | Description |
|-----------|---------------|-------------|
| Version 1 | Nov. 20, 2020 | - New issue |

In the effort to improve our products, we reserve the right to make changes judged to be necessary.

CONFIDENTIAL AND PROPRIETARY INFORMATION

This document contains confidential and proprietary information of Pulse Electronics, Inc. (Pulse) and is protected by copyright, trade secret and other state and federal laws. Its receipt or possession does not convey any rights to reproduce, disclose its contents, or to manufacture, use or sell anything it may describe. Reproduction, disclosure or use without specific written authorization of Pulse is strictly forbidden.

