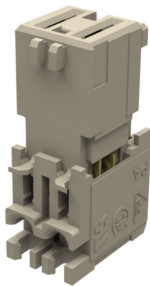




Part Number : [917780030](#)
Product Description : 5.00mm Appli-Mate
RAST 5 IDT Housing, Indirect, Female, 10 Amp,
2 Circuits, Fully Coded
Series Number : 91778
Status : Active
Product Category : Connector Housings




Documents & Resources

Drawings
[917780030_sd.pdf](#)

Specifications
[PK-90833-001-001.pdf](#)
[PS-99020-0037-001.pdf](#)

Product Environment Compliance

Compliance

GADSL/IMDS	Not Relevant
China RoHS	
EU ELV	Not Relevant
Low-Halogen Status	Not Low-Halogen per IEC 61249-2-21
REACH SVHC	Not Contained per D(2024)6225-DC (07 Nov 2024)
EU RoHS	Compliant per EU 2015/863

Multiple Part Product Compliance Statements

- Eu RoHS
- REACH SVHC
- Low-Halogen

Multiple Part Industry Compliance Documents

- IPC 1752A Class C
- IPC 1752A Class D
- Molex Product Compliance Declaration
- IEC-62474

Part Details

General

Status	Active
Category	Connector Housings
Series	91778
Description	5.00mm Appli-Mate RAST 5 IDT Housing, Indirect, Female, 10 Amp, 2 Circuits, Fully Coded
Comments	<p>This Molex product is manufactured from material that has the following ratings, tested by independent agencies: a) A Glow Wire Ignition Temperature (GWIT) of at least 775 deg C per IEC 60695-2-13. b) A Glow Wire Flammability Index (GWFI) above 850 deg C per IEC 60695-2-12 and hence complies with the requirements set out in the International Standard IEC 60335-1 5th edition - household and similar electrical appliances - safety, section 30 Resistance to heat and fire. The customers using this product must determine its suitability for use in their particular application through testing or other acceptable means as described in end-product glow-wire flammability test standard IEC 60695-2-11 and any applicable product end-use standard(s). If it is determined during the customer's evaluation of suitability, that higher performance is required, please contact Molex for possible product options.</p>
Product Name	RAST 5
UPC	883906937829

Agency

CSA	LR19980
UL	E29179

Electrical

Voltage - Maximum	250V AC
-------------------	---------

Physical

Circuits (Loaded)	2
Circuits (maximum)	2
Color - Resin	Natural
Durability (mating cycles max)	10
Flammability	94V-2
Gender	Female
Glow-Wire Capable	Yes
Lock to Mating Part	Yes
Material - Metal	Phosphor Bronze
Material - Plating Mating	Tin
Material - Plating Termination	Tin
Material - Resin	Nylon
Net Weight	2.980/g
Number of Rows	1
Packaging Type	Tray
Panel Mount	No
Pitch - Mating Interface	5.00mm
Pitch - Termination Interface	5.00mm
Plating min - Mating	5.080µm
Plating min - Termination	5.080µm
Polarized to Mating Part	Yes
Stackable	No
Temperature Range - Operating	-20° to +120°C
Termination Interface Style	IDT or Pierce
Wire Size (AWG)	18, 20

Mates With / Use With

Mates with Part(s)

Description	Part Number
Appli-Mate RAST 5 Vertical Headers	<u>91999</u>
Appli-Mate RAST 5 Right-Angle Headers	<u>93003</u>

Use with Part(s)

Description	Part Number
Use With	RAST Standard Interface

Application Tooling

Global

Description	Part Number
RAST 5 Power Semi-Automatic IDC Machine	<u>2166580200</u>
Hand Tool for Appli-Mate RAST 5 Connectors	<u>638276300</u>

This document was generated on Mar 09, 2025