

# MICRO SWITCH

FREEPORT ILL. U.S.A.  
A DIVISION OF HONEYWELL

FED MFG CODE 91929

## SWITCH - ENCLOSED

CATALOG LISTING  
21EN191-5

21EN191-5

M

DRAWING  
NUMBER

ISSUE  
M1213

RELEASE NO SR-12349 REPLACES

CHECK

### REVISIONS

A	C044351	D J W	24 OCT 79
B	C047573	PART 4	
		R J H	12 AUG 80
C	C057370	J A P	15 MAY 85
D	C074101		
		G J W	19 JAN 93
E	775048		
		R J H	13 MAY 94

CHECK

30 OCT 79

C E B

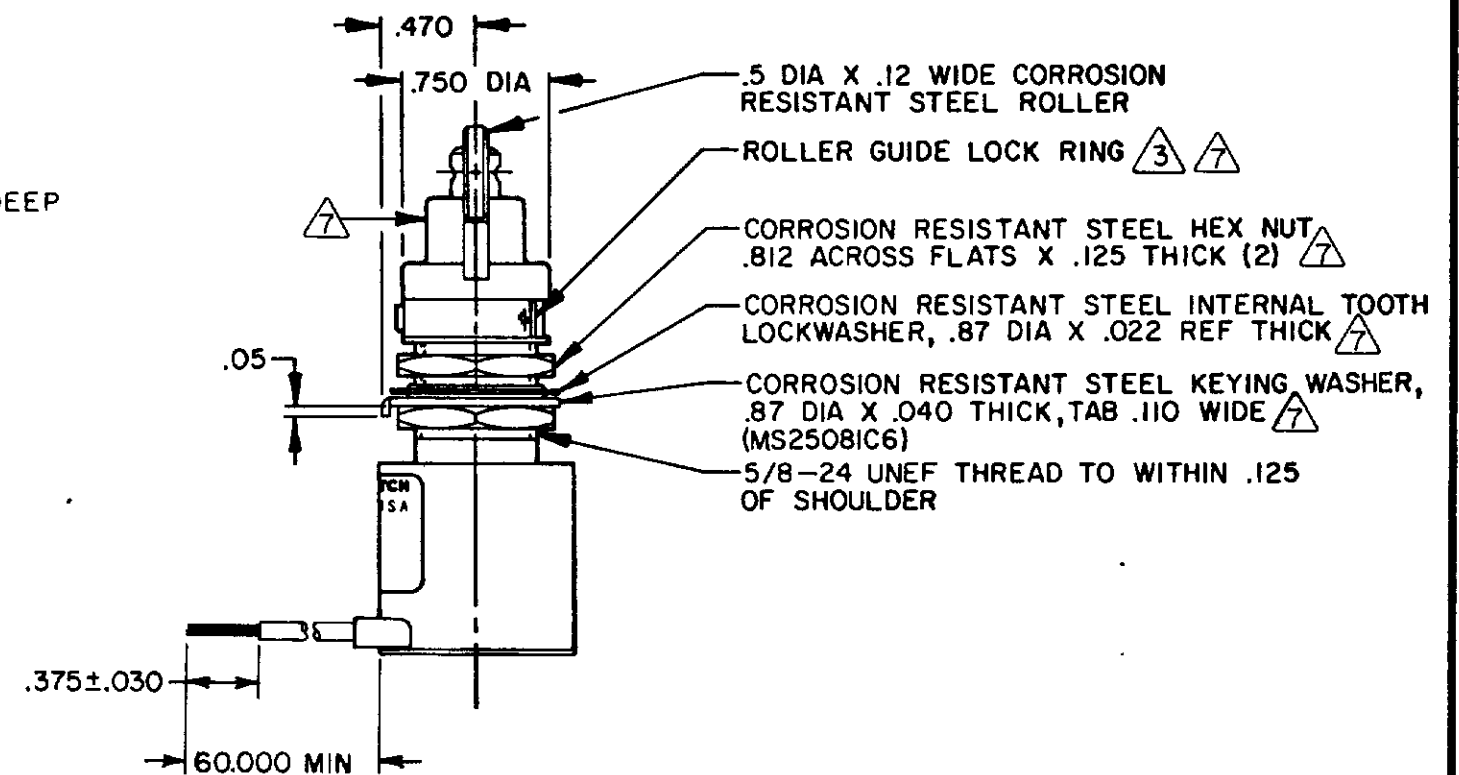
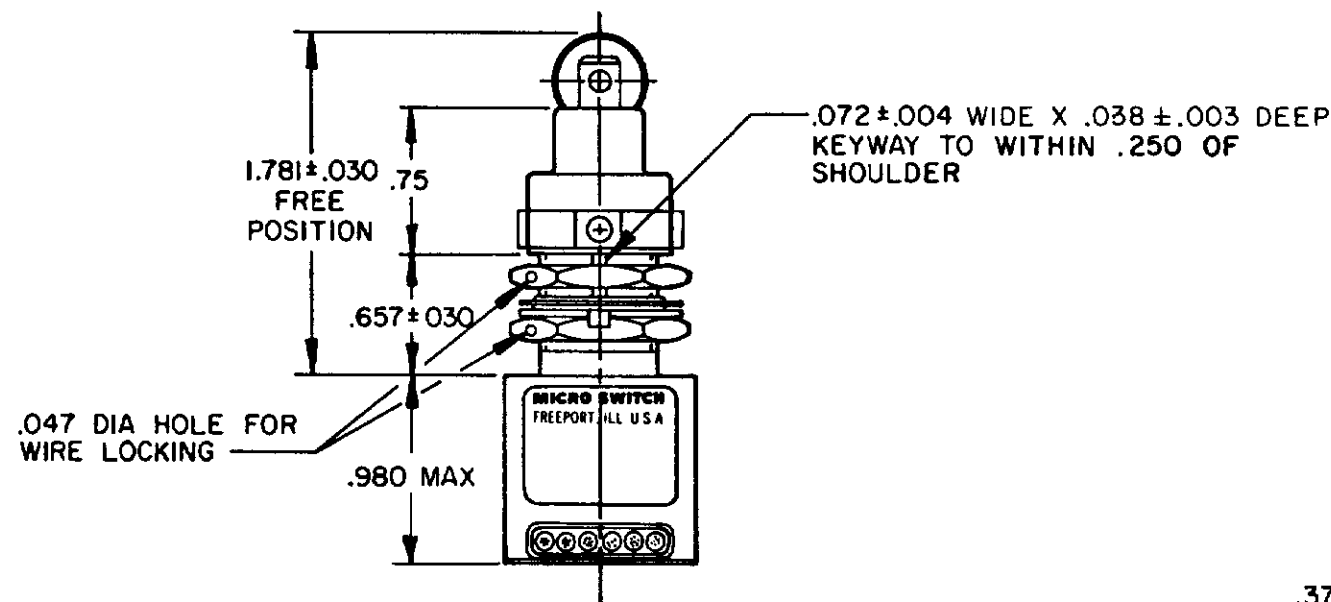
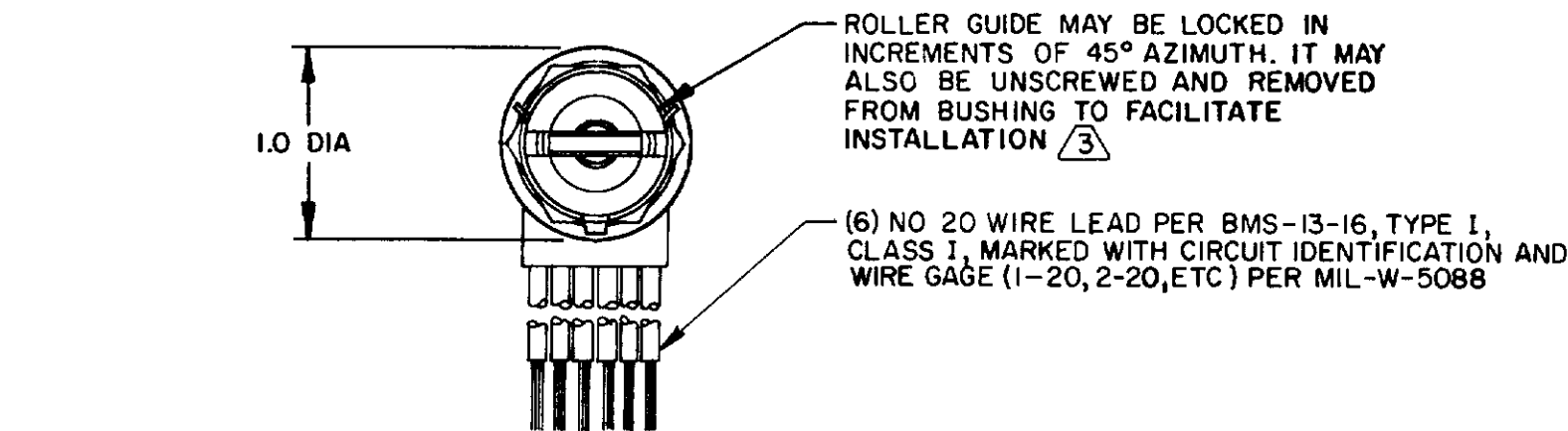
CHECK

25 OCT 79

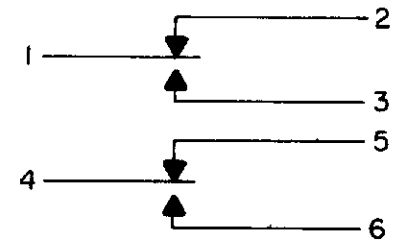
D J W

FO-52851-A

DRAWN



### CIRCUIT DIAGRAM

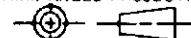


### NOTES

- 1 - CORROSION RESISTANT STEEL ENCLOSURE
- 2 - SWITCH SEALED PER MIL-S-8805 SYMBOL 4
- 3 - TO ADJUST ROLLER DIRECTION, REMOVE ROLLER GUIDE LOCK RING, SCREW ROLLER GUIDE DOWN AS FAR AS POSSIBLE, THEN UNSCREW TO DESIRED DIRECTION. SECURE BY REPLACING ROLLER GUIDE LOCK RING
- 4 - COINCIDENCE OF OPERATING AND RELEASING POINTS: .010 OF PLUNGER TRAVEL
- 5 - CIRCUIT DIAGRAM AND CAT. LIST. ARE SHOWN ON NAMEPLATE
- 6 - REPLACEMENT LOCKRING-PACKET 15PA137
- $\Delta$  - HARDWARE MAY BE PACKAGED UNASSEMBLED PER MIL-S-8805

THIS DRAWING COVERS A PROPRIETARY ITEM AND IS THE PROPERTY OF MICRO SWITCH, A DIVISION OF HONEYWELL. THIS DRAWING IS NOT TO BE COPIED OR USED WITHOUT THE APPROVAL OF MICRO SWITCH

THIRD ANGLE PROJECTION



SCALE FULL

DO NOT SCALE PRINT

TOLERANCES  
APPLY TO DESIGN UNITS. CONVERSIONS ARE ONLY FOR REFERENCE. UNLESS NOTED, TOLERANCES ARE 2

	DIM	TOL	DIM	TOL
	mm	mm/in	in	mm/in
NO PLACES				
ONE PLACE	0.1	1/16	0.01	0.001
TWO PLACES	0.01	1/1000	0.001	0.0001
THREE PLACES	0.001	1/10000	0.0001	0.00001

DESIGN UNITS ☐ SI METRIC ☒ US CUSTOMARY

RAW MATERIAL-COMMERCIAL STANDARD  
MICRO SWITCH STANDARDS APPLY  
DIMENSIONS ARE TO BE MET BEFORE  
PROTECTIVE COATINGS ARE APPLIED

WEIGHT 7.1 OZ MAX

### CHARACTERISTICS

OPERATING FORCE	6-12 LB
FULL OVERTRAVEL FORCE	30 LB MAX
RELEASE FORCE	4 LB MIN
PRETRAVEL	.040 MAX
DIFFERENTIAL TRAVEL	.020 MAX
OVERTRAVEL	.250 MIN

### ELECTRICAL DATA

CONTACT ARRANGEMENT  
SPDT (2)

LOAD	SEA LEVEL	50,000 FT.
RES	4	4
IND	2	2
MOTOR	4	
LAMP		