



Part Number : [39310028](#)

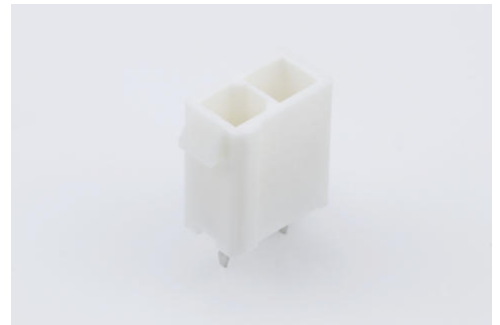
Product Description : Mini-Fit Jr. Vertical Header, 4.20mm Pitch, Dual Row, 2 Circuits, without Snap-in Plastic Peg PCB Lock, Gold, Natural

Series Number : 5566

Status : Active

Product Category : PCB Headers and Receptacles

Engineering Part Number : 5566-02BGS-210



Documents and Resources

Drawings

[039310028 sd.pdf](#)

[PK-5566-000.pdf](#)

3D Models and Design Files

[STEP AP242](#)

[SOLIDWORKS](#)

[Creo](#)

[Symbol and Footprint \(Multi-Format\)](#)

Specifications

[AS-5557-001-001.pdf](#)


[AS-5566-001-001.pdf](#)

[PK-5566-003-001.pdf](#)

[PS-5556-001-001.pdf](#)

Product Environment Compliance

Compliance

GADSL/IMDS	Not Relevant
China RoHS	 per SJ/T 11365-2006
EU ELV	Not Relevant
Low-Halogen Status	Low-Halogen per IEC 61249-2-21
REACH SVHC	Not Contained per D(2025)7771-DC (04 Feb 2026)

EU RoHS

Compliant per EU 2015/863

Compliance Statements

- EU RoHS
- REACH SVHC
- Low-Halogen

Industry Documents

- IPC 1752A Class C
- IPC 1752A Class D
- Molex Product Compliance Declaration
- IEC-62474
- chemSHERPA (xml)

Substances of Interest

- PFAS

EU RoHS Certificate of ComplianceAdditional Product Compliance Information**Part Details****General**

Status	Active
Category	PCB Headers and Receptacles
Series	5566
Description	Mini-Fit Jr. Vertical Header, 4.20mm Pitch, Dual Row, 2 Circuits, without Snap-in Plastic Peg PCB Lock, Gold, Natural
Application	Wire-to-Board
Comments	The 5566 header should be used with standard Mini-Fit female terminals. If increased amperage of up to 13A per circuit is needed, please consider using the Mini-Fit Plus HCS family 45750 terminals with 46015 headers; See Molex Product specification PS-5666-001 for current de-rating information.
Component Type	PCB Header
Product Name	Mini-Fit Jr.
UPC	800754251471

Agency

CSA	LR19980
UL	E29179

Electrical

Current - Maximum per Contact	9.0A
Voltage - Maximum	600V

Physical

Breakaway	No
Circuits (Loaded)	2
Circuits (maximum)	2
Color - Resin	Natural
Durability (mating cycles max)	30
First Mate / Last Break	No
Flammability	94V-0
Gender	Male
Glow-Wire Capable	No
Guide to Mating Part	No
Keying to Mating Part	No
Lock to Mating Part	Yes
Material - Metal	Brass
Material - Plating Mating	Gold
Material - Plating Termination	Tin
Material - Resin	Nylon
Mounting Style	Through Hole
Net Weight	1.223/g
Number of Rows	2
Orientation	Vertical
Packaging Type	Bag
PCB Locator	Yes
PCB Retention	No
PCB Thickness - Recommended	1.60mm
PC Tail Length	3.50mm
Pitch - Mating Interface	4.20mm

Pitch - Termination Interface	4.20mm
Plating min - Mating	0.762µm
Plating min - Termination	2.540µm
Polarized to Mating Part	Yes
Polarized to PCB	Yes
Shrouded	Shrouded
Stackable	No
Temperature Range - Operating	-40° to +105°C
Termination Interface Style	Through Hole

Solder Process Data

Max-Duration	5
Lead-Free Process Capability	WAVE
Max-Cycle	1
Max-Temp	260

Mates With / Use With

Mates with Part(s)

Description	Part Number
Mini-Fit Jr. Receptacle Housings	<u>5557</u>
Mini-Fit TPA2 and Mini-Fit Sigma Dual Row Receptacle Housings	<u>172708</u>

This document was generated on Jun 14, 2026