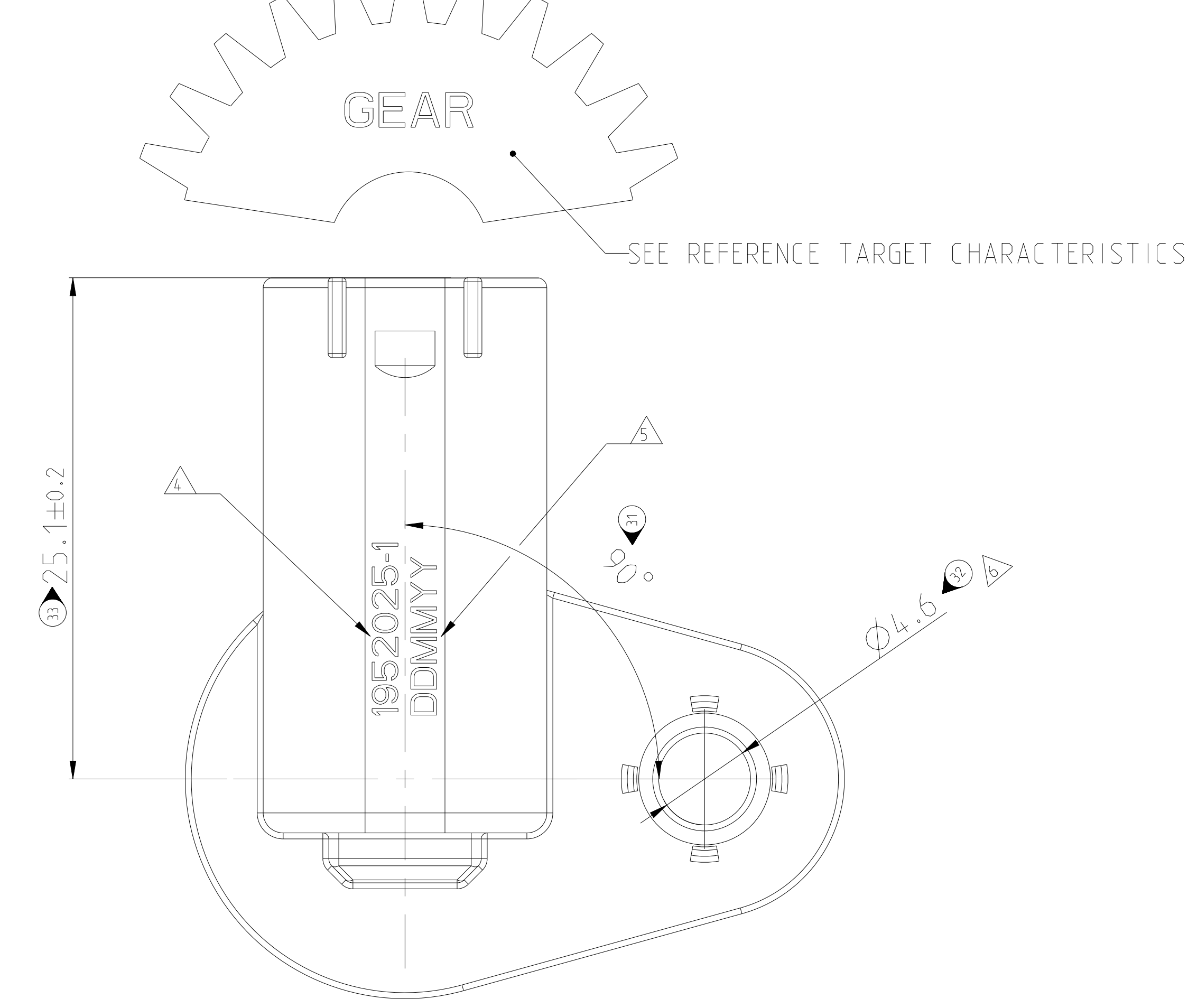
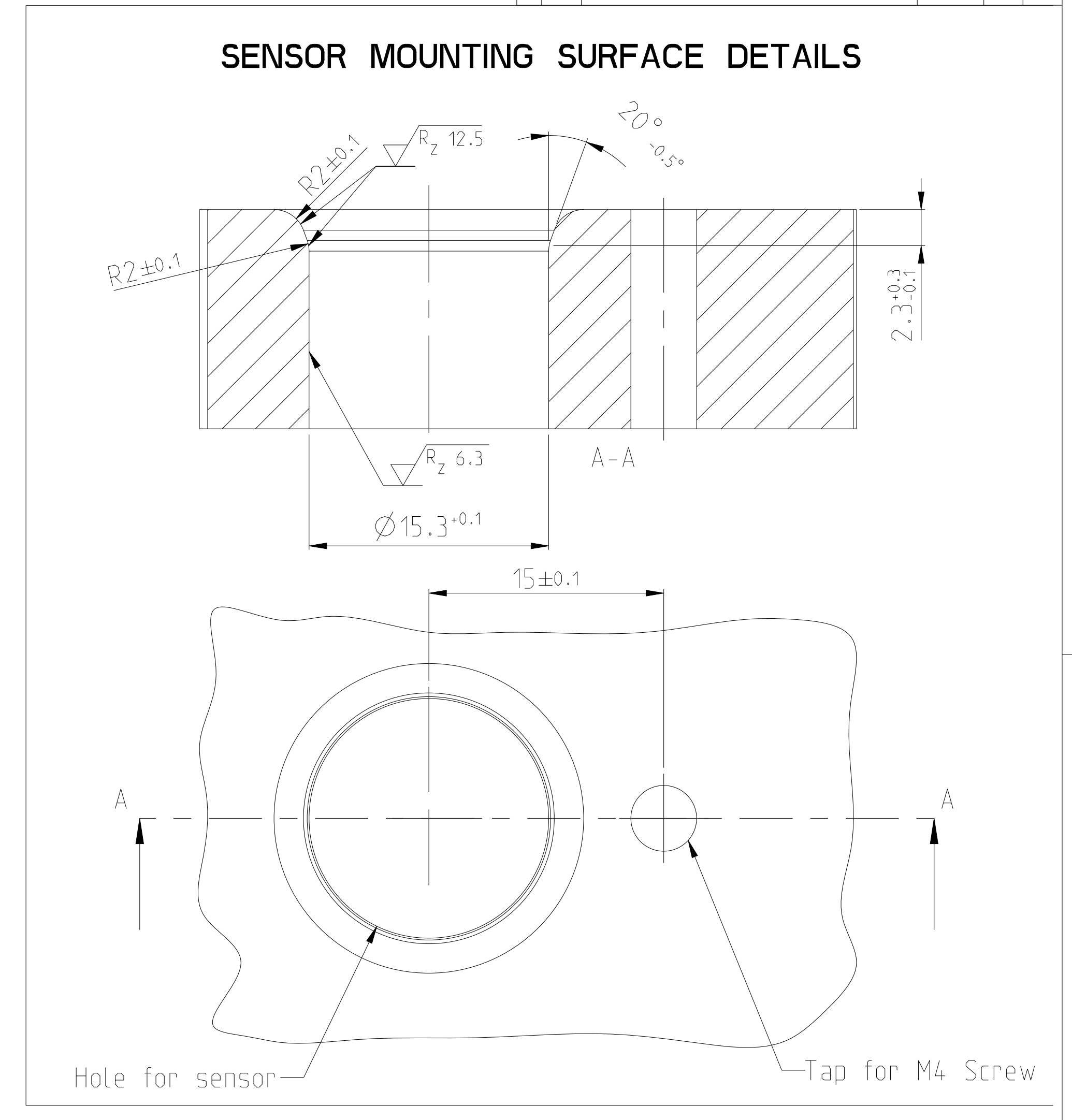
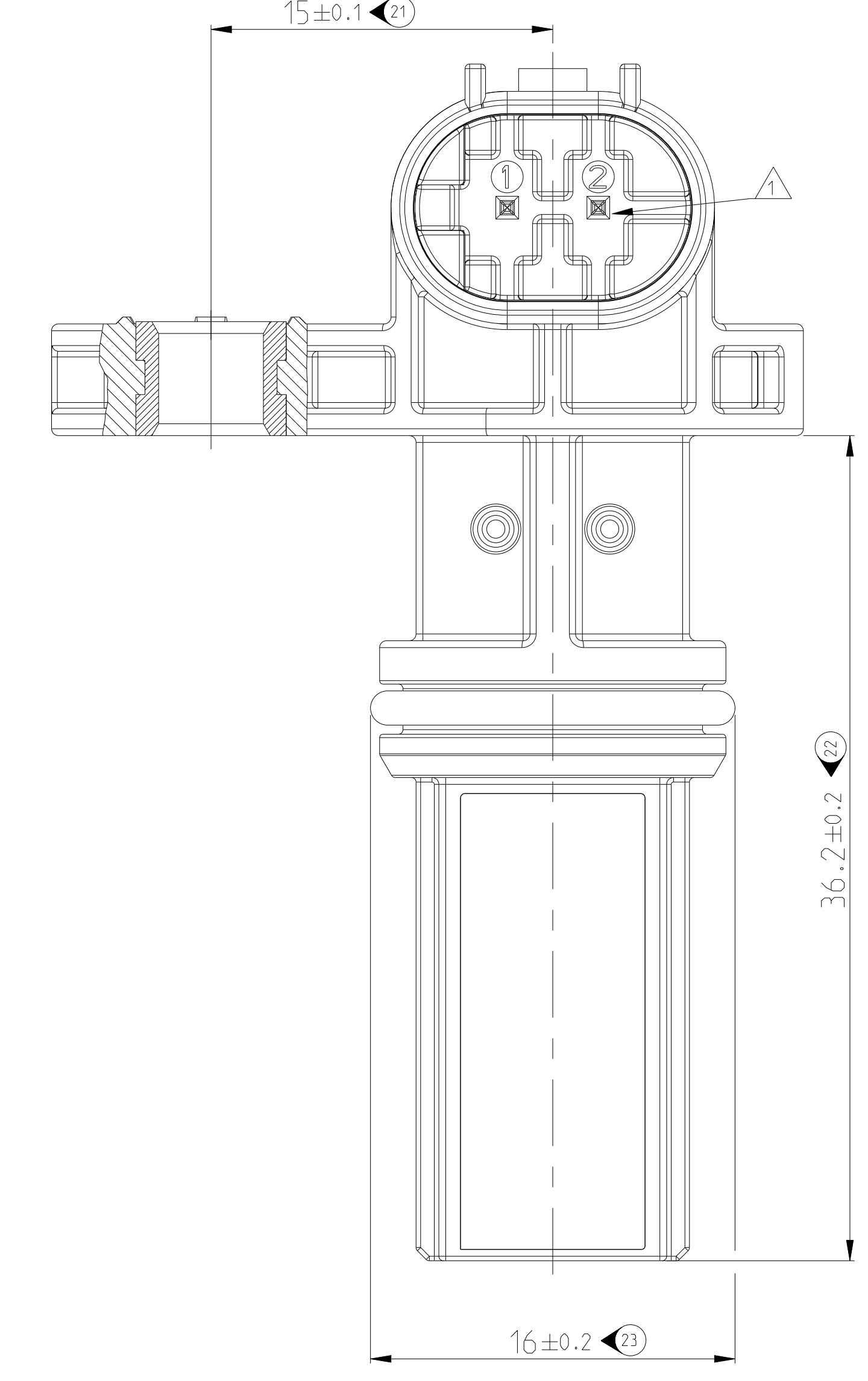
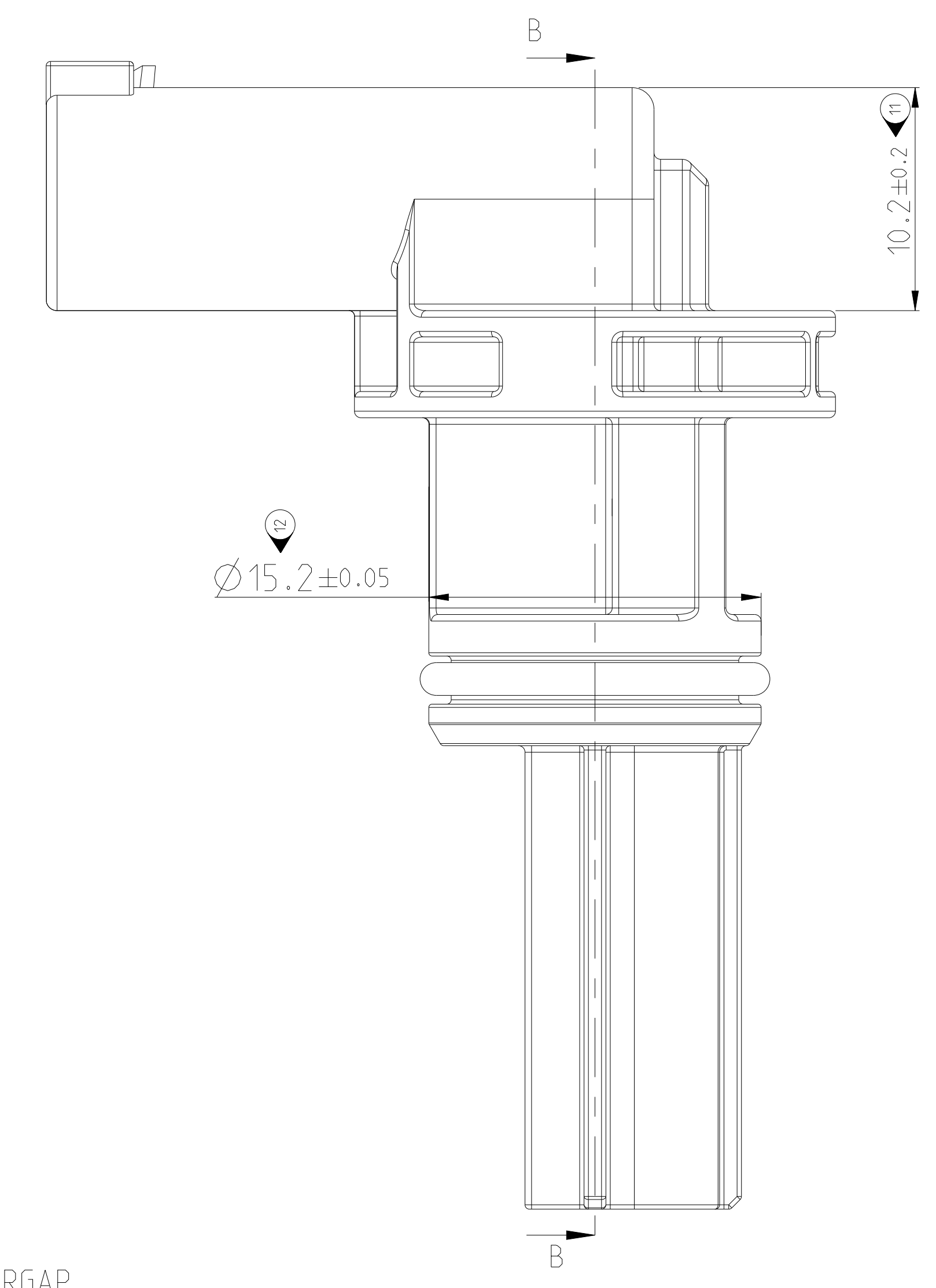
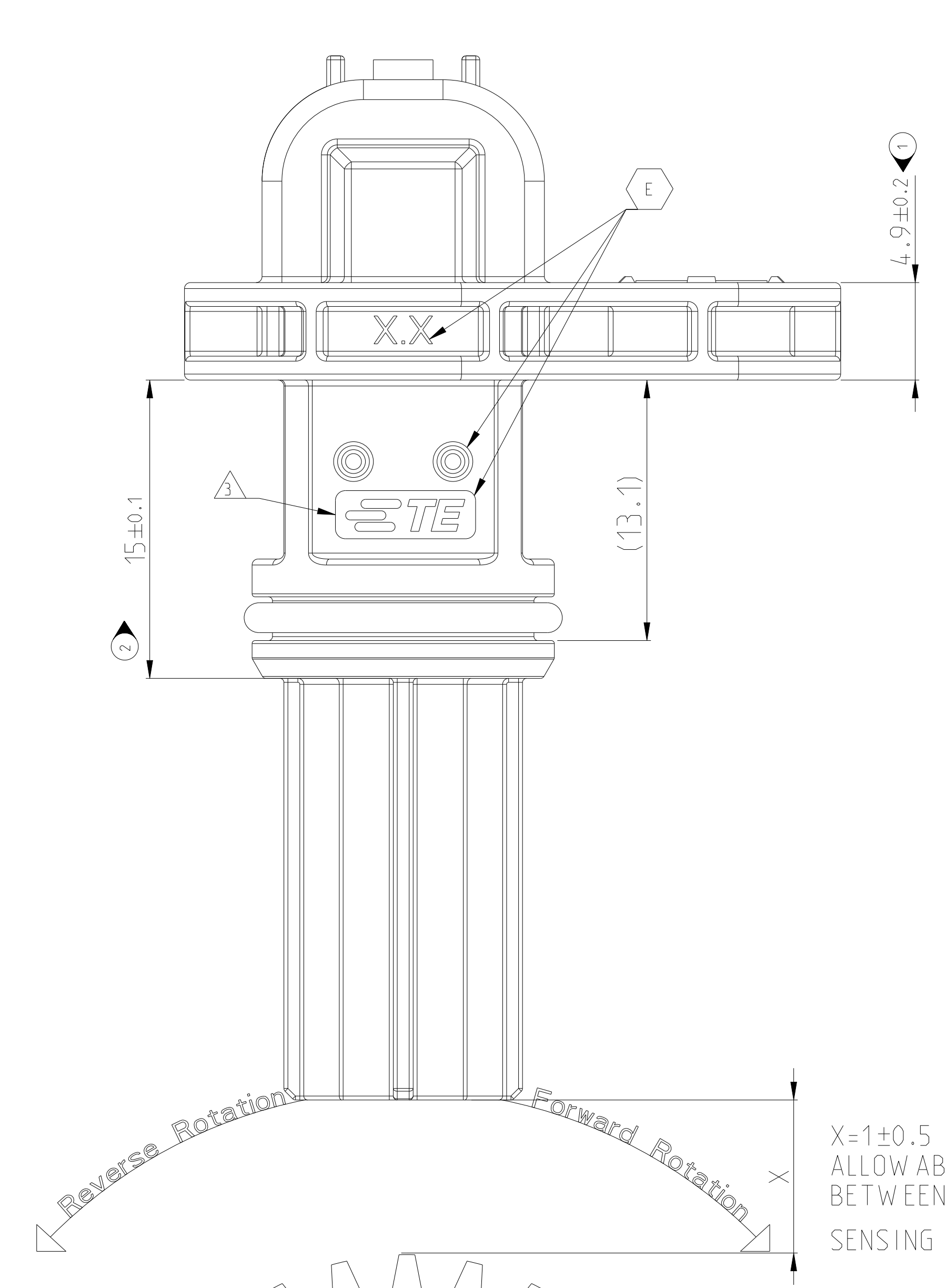


REV	DATE	DESCRIPTION	BY	CHK	APPD
D2	24.02.2018	Updated Tolerance of sensor mounting surface	SPB	SP	
D3	16.04.2019	Weight info. added in the BOM	SPB	SP	
D4	23.08.2019	customer interface surface finish details updated	SPB	SP	
E	09.02.2025	TE logo updated, Pin support, Cavity mark added	SP	SKC	



PIN ALLOCATION SCHEDULE

2	OUTPUT
1	INPUT 'I _{CC} '
PIN	FUNCTION

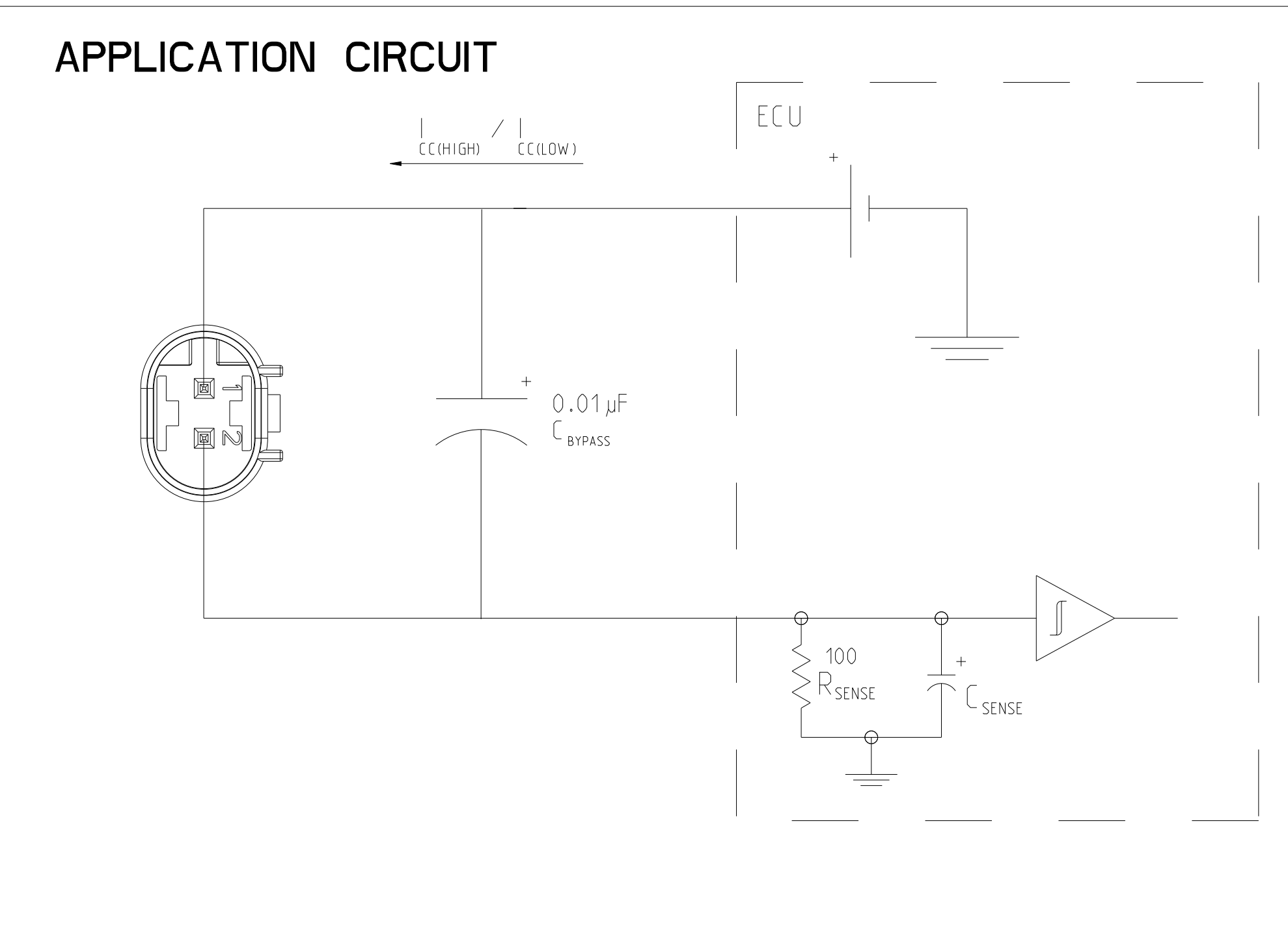
- ④ △ MATING CONNECTOR TE PN 1-967644-1 CODE A, 2POS INTERFACE ACCORDING TO SPEC 114-18063-122
- ⑥ 2. TEST ACCORDING TO EOL SPEC 109-64001
- ⑥ △ TE LOGO DEEPEMED AND RAISED
- ⑥ △ TE PN - PRINTED AFTER POSITIVE EOL TEST
- ⑥ △ PRODUCTION DATE CODE FORMAT - DDMYY - PRINTED AFTER POSITIVE EOL TEST
- △ BUSH SUITABLE FOR M4 BOLT/SCREW

*Operational Air Gap Range is dependent on the available differential magnetic field. The available field is dependent of target geometry and material, and should be independently characterized. The field available from the Reference Target is given in the Reference Target Parameters.

EOL TEST CHARACTERISTICS

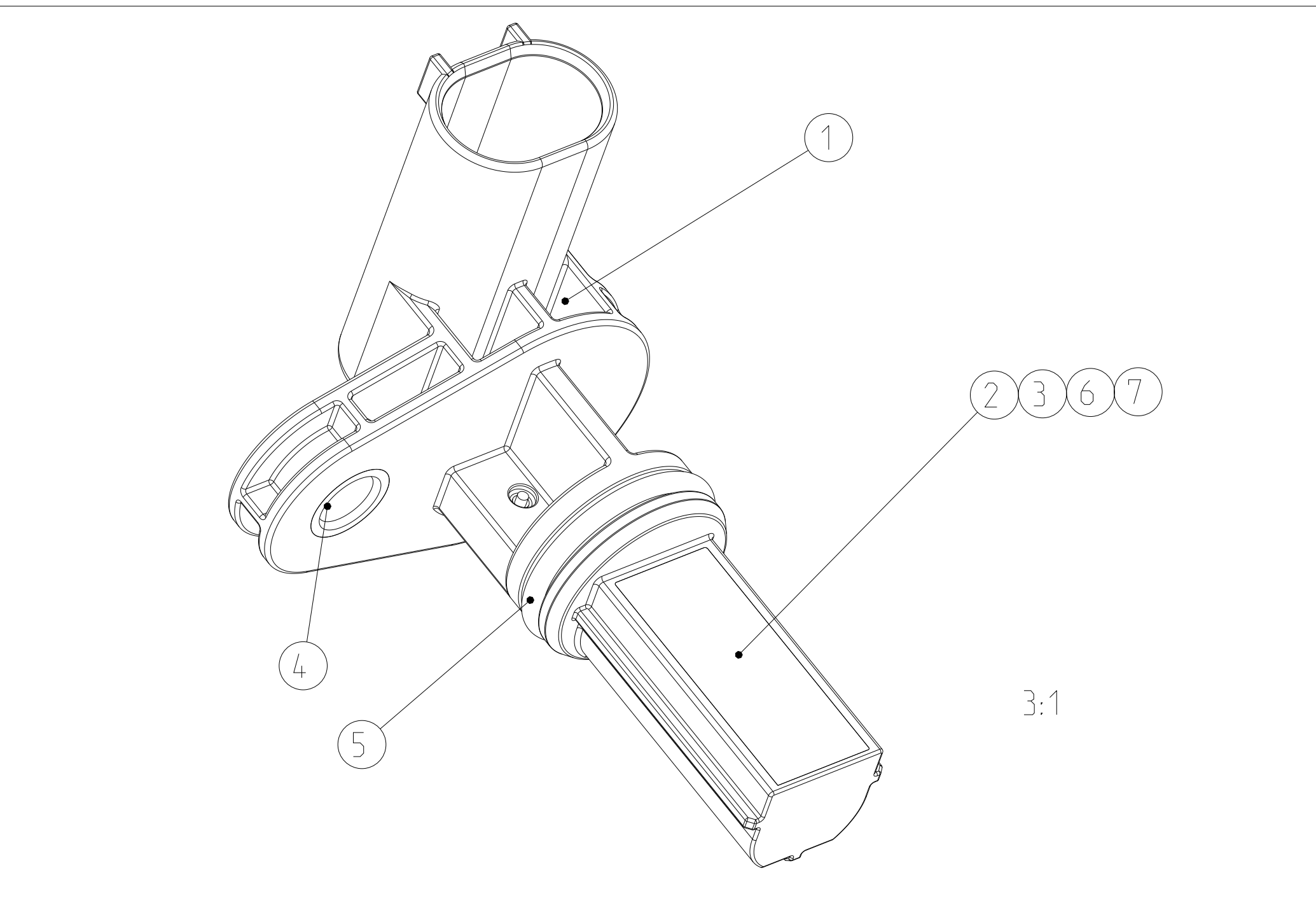
Temperature	25±10 °C
Supply Voltage	13.5±0.5V
Air gap	1.5mm±0.05mm
Reference Gearwheel	see Target Characteristics
Speed of Wheel	5000 rpm
Number of pulses	60 Tooth
Frequency	5000 Hz
Pulse forward	45 µs
Pulse reverses	90 µs
Missed pulse / revolution	= ZERO

OUTPUT PULSE TIMING



REFERENCE TARGET CHARACTERISTICS

Characteristics	Symbol	Test Conditions	Typ. Units	Symbol Key
Outside Diameter	D _o	Outside diameter of target	120 mm	
Face Width	F	Breadth of tooth, with respect to sensor	6 mm	
Circular Tooth Length	t	Length of tooth, with respect to sensor; measured at D _o	3 mm	
Circular Valley Length	t _v	Length of valley, with respect to sensor; measured at D _o	3 mm	
Tooth Whole Depth	h ₁		3 mm	
Material		Low Carbon Steel	-	



1952025-1	10	-	BLACK	EPOXONIC	POTTING	7			
		1	-	-	HALL IC, AT5692	6			
ASSY P/N	WEIGHT (g)	QTY	1	BLACK	VITON (GLT)	O-RING	5		
			1	-	CuZn39Pb3	BUSH	4		
			1	-	-	PCB	3		
			2	-	CuFe2	CONTACT PIN	2		
			1	BLACK	PA 66 GF25	SENSOR HOUSING	1		
THIS DRAWING IS A CONTROLLED DOCUMENT.		DATE	16FEB2008	BY	Uday M. Bhat	CHK	Supal Alva	DATE	16FEB2008
DIMENSIONS: DIMS		UNITS	mm	SCALE	1:1	MATERIAL: - FINISH: -			
MATERIAL: - FINISH: -		WEIGHT	10g	SCALE	5:1	Customer Drawing			