



BD070LIC2

7" 1280x800 Display with PCAP Multi-touch.

7 in stock (can be backordered)

[Add to cart](#)

The BD070LIC2 is a 7" Display with 1280×800 resolution with 5-point PCAP multi-touch. This is the replacement panel for the BD070LIC1. This 7" display has the Tianma TM070JDHG30-00. Datasheet is referenced below. The touch screen is a PCAP multi-touch with an I2C interface and Chemically Hardened Glass using an FT5426 touch controller. The display kit ships with a daughter board and cable that interfaces with all Boundary Devices i.MX6 boards. Touch Screen Driver is integrated with all Boundary Devices kernels.

Please make sure to upgrade to the latest 2016 uboot. For 3.14 and newer kernels, just use this environment variable:

```
setenv fb_lvds tm070jdhg30:24:68152388,1280,800,5,63,2,39,1,1
savee
```

For older kernels, you will need to modify the bootscript to use this display with the above timings.

SUPPORT

[7" Tianma Datasheet](#)
[Touch Screen Datasheet](#)

Compatible Products



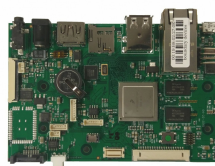
BD-SL-i.MX6

formerly SABRE Lite



Nitrogen6_MAX

i.MX6Q/QPlus + 4GB
DDR3



Nitrogen6X

NXP/Freescale i.MX6



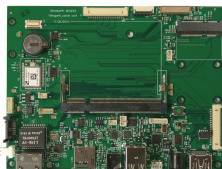
Nit6_SoloX

i.MX6 SoloX



Nitrogen6_Lite

i.MX6 Solo, 512MB
DDR3



Nit6X_Carrier



[Products](#)

[Custom](#)

[Video Reviews](#)

[Where To Buy](#)

[Support](#)

[Contact](#)

[Blog](#)

[About Us](#)

[Careers](#)

[Privacy Policy](#)

[Return Policy](#)

[Terms and Conditions](#)

Register for Downloads

[Go!](#)

Product Selector Guide

Still not sure about exactly what you need? Check out our informative guide!

[Go!](#)