

D SUB HD FE STR 26P PL3

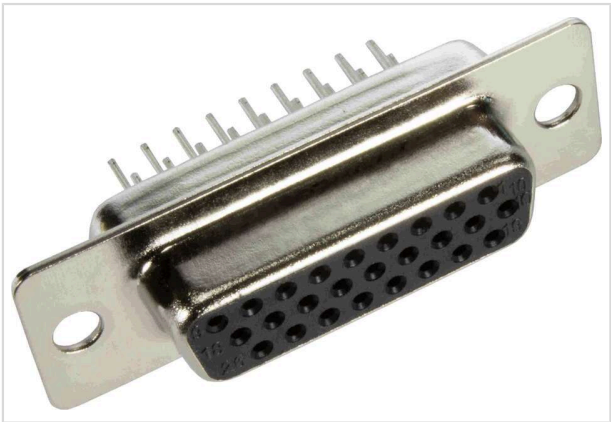


Image is for illustration purposes only. Please refer to product description.

Part number	09 56 251 7500
Specification	D SUB HD FE STR 26P PL3
HARTING eCatalogue	https://harting.com/09562517500

Identification

Category	Connectors
Series	D-Sub
Identification	High Density
Element	Connector
Description of the contact	Stamped Straight

Version

Termination method	Wave soldering termination
Gender	Female
Size	D-Sub 2
Number of contacts	26
Locking type	Fixing flange with feed through hole Ø 3.1 mm

Technical characteristics

Distance between rows	1.98 mm
Contact spacing (termination side)	2.29 mm
Rated current	2 A
Clearance distance	≥1 mm
Creepage distance	≥1 mm
Insulation resistance	> 5 x 10 ⁹ Ω
Contact resistance	<20 mΩ
Limiting temperature	-40 ... +85 °C



Pushing Performance
Since 1945

Technical characteristics

Performance level	3
Mating cycles	≥50
Test voltage $U_{r.m.s.}$	1 kV
Isolation group	IIIa ($175 \leq CTI < 400$)
PCB thickness	1.6 mm
Installation height	4.1 mm
Hot plugging	No

Material properties

Material (insert)	Thermoplastic resin, glass-fibre filled (PBTP) Shell: steel, nickel plated
Colour (insert)	Black
Material (contacts)	Copper alloy
Surface (contacts)	Noble metal over Ni Mating side Sn over Ni Termination side
Material flammability class acc. to UL 94	V-0
RoHS	compliant with exemption
RoHS exemptions	6(c): Copper alloy containing up to 4 % lead by weight
ELV status	compliant with exemption
China RoHS	50
REACH Annex XVII substances	Not contained
REACH ANNEX XIV substances	Not contained
REACH SVHC substances	Yes
REACH SVHC substances	Lead
ECHA SCIP number	ecef7555-f643-4ceb-a337-fc54762297f1
California Proposition 65 substances	Yes
California Proposition 65 substances	Lead Nickel
Fire protection on railway vehicles	EN 45545-2 (2020-08)
Requirement set with Hazard Levels	R26

Specifications and approvals

Specifications	DIN 41652
----------------	-----------



Pushing Performance
Since 1945

Commercial data

Packaging size	100
Net weight	0.01 g
Country of origin	China
European customs tariff number	85366990
GTIN	5713140071506
eCl@ss	27440214 D-Sub coupler
ETIM	EC001136