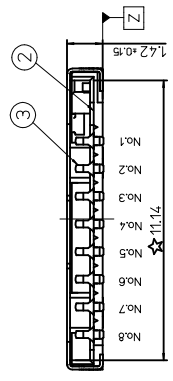
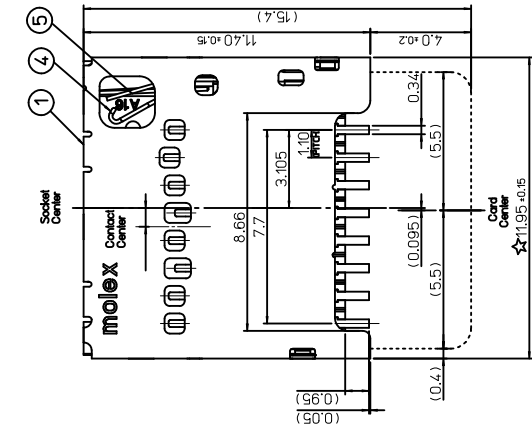


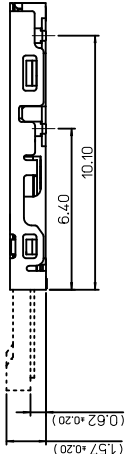
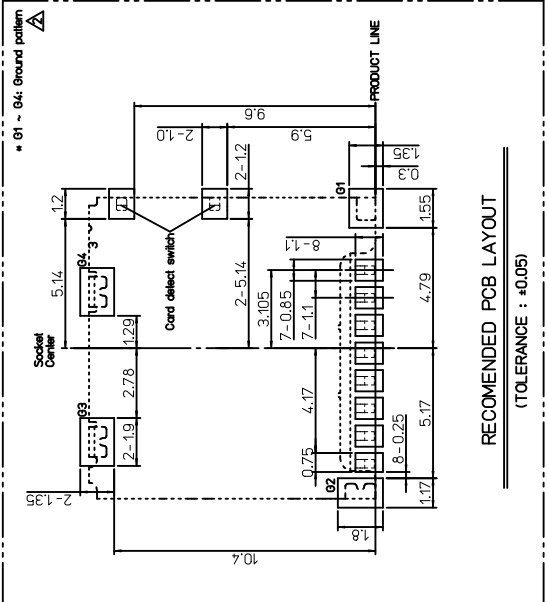
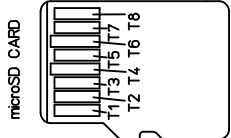
10 9 8 7 6 5 4 3 2 1



Card insertion condition	Card detect switch	Switch terminal	Detected terminal
Without Card	Open	○	○
Card insertion	Close	—	—

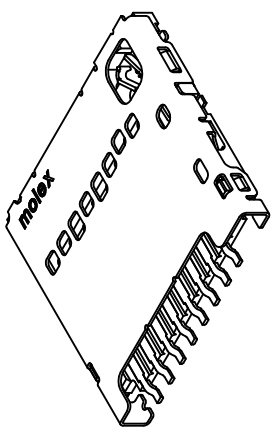
[microSD CARD PIN-MAP]

PIN NUMBER	DESCRIPTION
T1	DAT2
T2	CD/DAT3 ²
T3	CMD
T4	Vcc
T5	CLK
T6	Vss ²
T7	DAT0
T8	DAT1



NOTES

1. MATERIALS: SEE TABLE
2. FINISHES: SEE TABLE
3. PRODUCT SPECIFICATIONS: PS-104031-001
4. PACKING SPECIFICATIONS: PK-104031-001
5. COPLANARITY OF SOLDER TAILS: 0.1mm MAX.
MISALIGNMENT OF SOLDER TAIL FROM 'Z'
UPPER DIRECTION 0.05mm MAX., LOWER DIRECTION 0.1mm MAX.



NO.	PARTS NAME	MATERIALS	FINISHES
5	SWITCH TERMINAL	PHOSPHOR BRONZE	SELECTIVE GOLD OVER NICKEL
4	DETECT TERMINAL	PHOSPHOR BRONZE	SELECTIVE GOLD OVER NICKEL
3	CONTACT TERMINALS	PHOSPHOR BRONZE	SELECTIVE GOLD OVER NICKEL
2	HOUSING	LIQUID CRYSTAL POLYMER	BLACK COLOR, UL94V-0
1	METAL SHELL	STAINLESS STEEL	NICKEL OVERALL

DIMENSION STYLE	SCALE	DESIGN UNITS	METRIC	THIRD ANGLE PROJECTION
MM ONLY	5:1	METRIC		

DRAWN BY	DATE	TITLE
I.C. YANG	2008. 10. 01	MICRO SD SOCKET
CHECKED BY	DATE	
SH. CHU	2008. 10. 02	PUSH-PULL 1.42H CONN.
APPROVED BY	DATE	
S.J. SEH	2008. 10. 02	

MATERIAL NO.	ORDER NO.
1040310811	104031-0811

QUALITY SYMBOLS	GENERAL TOLERANCES (UNLESS SPECIFIED)
▷=0	4 PLACES ± --- INCH
▽=0	3 PLACES ± 0.1
	2 PLACES ± 0.1
	1 PLACE ± 0.2
	ANGULAR ± 1 °

REV	DESCRIPTION
A	NEW RELEASE
	EC NO: KOR2010-0180
	DRW#HJEONG
	CHKD:SSOOKIM
	APP:YUNSIKKIM
	2010/05/18

10 9 8 7 6 5 4 3 2 1