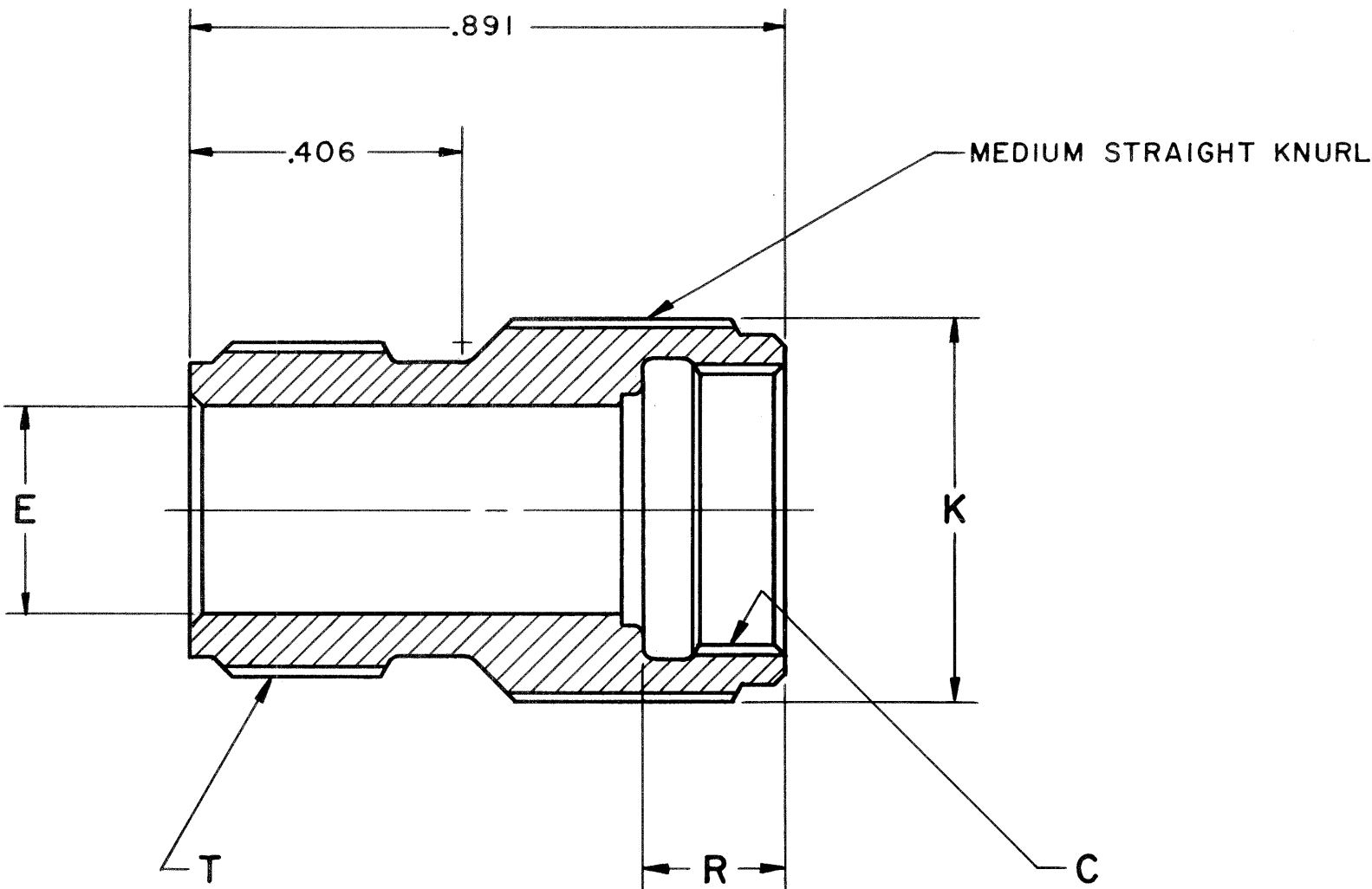


PART NUMBER	C THREAD CLASS 2B	E DIA ±.005	K DIA MAX	R +.000 -.010	T THREAD CLASS 2A	RELEASE	MADE FROM
10-123011-6	.3125-32 UNEF	.190	.469	.215	.3750-32 UNEF	31508 -287	10-123011- 6B
- 8	.4375-28 UNEF	.312	.594		.5000-28 UNEF		- 8B
-10	.5625-24 UNEF	.436	.719		.6250-24 UNEF		-10B
-12	.6875-24 UNEF	.561	.844		.7500-20 UNEF		-12B
-14	.8125-20 UNEF	.678	.969		.8750-20 UNEF		-14B
-16	.9375-20 UNEF	.802	1.094		1.0000-20 UNEF		-16B
-18	1.0625-18 UNEF	.894	1.219		1.1875-18 UNEF		-18B
-20	1.1875-18 UNEF	1.029	1.312	.312	1.1875-18 UNEF		-20B
-22	1.3125-18 UNEF	1.150	1.469		1.4375-18 UNEF		-22B
-24	1.4375-18 UNEF	1.274	1.594		1.4375-18 UNEF	33524 -599	-24B

REL NO. 31508-287		REVISIONS			
CHG NO.	SYM	DESCRIPTION	DATE	APPROVED	
43525 -746	A1	REDRAWN, WAS SIZE "B" TYPE WRITTEN; PROVIDED ENVELOPE DWG	11-21-64 W. GAY	J. Harrison	
47524-170	A2	ADD & REL -XX9 FINISH	11-1-65 J. Harrison	J. Harrison	
55524 -58	A3	ADD & REL -XXG FINISH	11-1-67 DEMATTIO	J. Harrison	
72028 -54	B	(CL II) ADD & REL -XX7 FINISH	5/12/81 J. Harrison	J. Harrison	
76484 -1	C	(CL II) ADDED MADE FROM COLUMN	10-2-81 J. Harrison	J. Harrison	
80544 -1	D	(CL II) ADDED 9-2 SPEC TO NOTE 1	9-1-89 J. Harrison	J. Harrison	
82906	E	(CL II) ADD & REL -XXY FINISH	3-5-97 J. Harrison	J. Harrison	
85035	F	ADD AND REL -XXY FINISH & DATA	6/20/93 J. Harrison	J. Harrison	
85448	G	(CL II) SEE ECN: 85448	4-27-99 J. Harrison	J. Harrison	
86546	H	(CL II) ADD & RELEASE -XXU FINISH & DATA	4-28-99 J. Harrison	J. Harrison	
C2018	J	SEE ECN C2018	3/16	Prescott	



3. REF SYMBOL

2. THREADS ARE IN ACCORDANCE WITH
FEDERAL HANDBOOK H - 28.

1. TO COMPLETE PART NO., ADD APPLICABLE LAST
DIGIT TO SUFFIX FOR DESIRED FINISH.

CHROMATE TREAT	SUFFIX -XX0	9-3350
CADMIUM PLATE	SUFFIX -XX1	9-2158
BLACK ANODIZE	SUFFIX -XX2	9-3487
CADMIUM PLATE OLIVE DRAB	SUFFIX -XX3	9-3047
GREY ANODIZE	SUFFIX -XX4	9-3487
ANODIC COATING	SUFFIX -XX5	9-3290
BRIGHT CADMIUM PLATE, NICKEL	SUFFIX -XX6	9-4332
NICKEL ALLOY PLATE	SUFFIX -XX7	9-6914
CAD PLATE, O.D., NICKEL BASE	SUFFIX -XX8	9-4960
BRIGHT NICKEL	SUFFIX -XX9	9-3435
BLACK ZINC ALLOY PLATE	SUFFIX -XXY	9-9181
BLACK ZINC CONDUCTIVE	SUFFIX -XXX	9-9181-1
GREEN ZINC ALLOY PLATE	SUFFIX -XXU	9-9263
GRAY ZINC NICKEL	SUFFIX -XXFL	C9-9422-FL

NOTES:

USE OF THIS DOCUMENT IS UNLIMITED. DOCUMENTS
REFERENCED HEREON CONTAIN LIMITED RIGHTS DATA.

ITEM NO.	QTY REQD	DESCRIPTION	PART NUMBER	CODE IDENT	ZONE
PARTS LIST					
UNLESS OTHERWISE SPECIFIED					
LINEAR DIMENSIONS ARE IN INCHES. TOLERANCES: 3 PLACES ±.010; 2 PLACES ±.03; 1 PLACE ±.1; ANGLES ±2°. OTHER STANDARDS PER SCINTILLA SPEC 9-3800 AND MIL-STD 8.		DRAWN: HAYES CHECKED: Teelon MATERIAL: STANDARDS: J. Balantieri 4-7-65 DRAFTING: D. Sweet 4-7-65 ENGINEERING: J. Harrison 4-7-65 DEVELOPMENT:	DATE: 7-12-56 DATE: 4-7-65	THE Bendix CORPORATION SCINTILLA DIVISION SIDNEY, NEW YORK, U.S.A.	
MATERIAL SPEC ALUMINUM ALLOY		PROCESS SPEC	TITLE: ADAPTER, ELECTRICAL CONNECTOR, TYPE PB(), (ENVELOPE DRAWING)		
			CODE IDENT NO. 77820	SIZE C	10-123011
			SCALE NONE	WT	REF SHEET