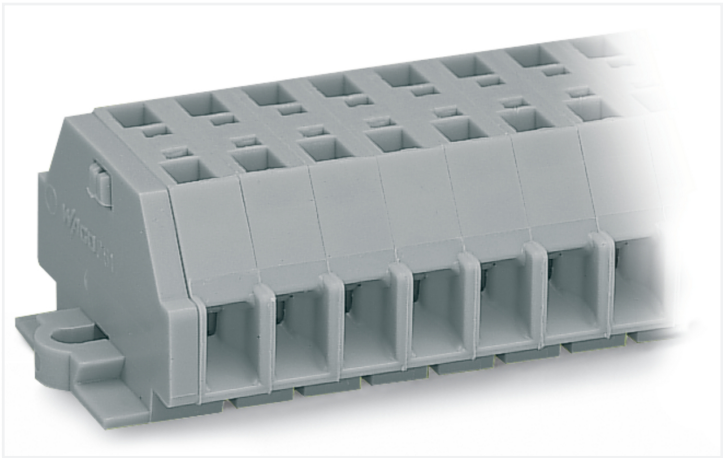


Data Sheet | Item Number: 261-153

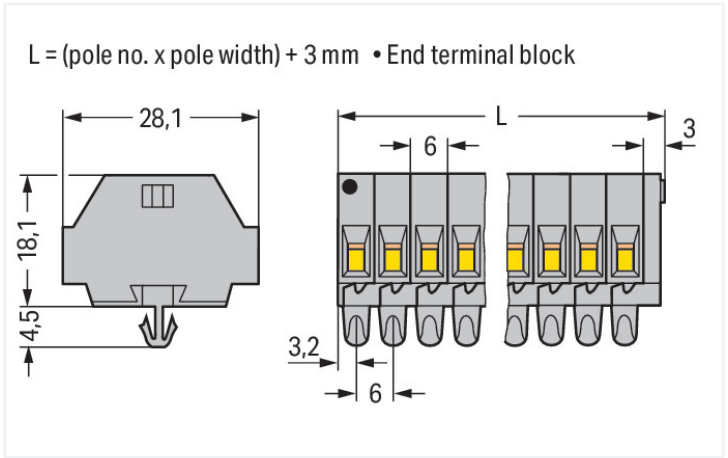
2-conductor terminal strip; without push-buttons; with snap-in mounting feet; 3-pole; for plate thickness 0.6 - 1.2 mm; Fixing hole 3.5 mm Ø; 2.5 mm²; CAGE CLAMP®; 2,50 mm²; gray

<https://www.wago.com/261-153>



Color: ■ gray

Similar to illustration



Dimensions in mm

Through terminal block, 261 Series, CAGE CLAMP®

Quick and easy connections are guaranteed with this through terminal block (item number 261-153). Whether for industrial or building applications, you can use our through terminal blocks to connect electrical conductors quickly and safely. We offer variants for both classic through-wiring and potential distribution. Our mini rail-mount terminal block is rated for 500 V and is designed for use with a rated current of up to 24 A. Strip lengths must be between 8 mm and 9 mm when connecting conductors to this through terminal block. This product incorporates conductor terminals and utilizes CAGE CLAMP®. Our CAGE CLAMP® connection provides a reliable and maintenance-free way to connect all types of conductors. You do not need to prepare the conductor in any way, such as crimping ferrules. This through terminal block is suitable for conductor cross sections ranging from 0.08 mm² to 2.5 mm². Up to three potentials / three poles can be connected to this terminal strip using six clamping points on one level. The gray housing is made of polyamide (PA66) for insulation. This mini rail-mount terminal block is operated with an operating tool. The side-entry wiring makes it possible to connect copper conductors.

Electrical data

Ratings per IEC/EN	
Nominal voltage (III/3)	500 V
Rated impulse withstand voltage (III / 3)	6 kV
Rated current	24 A
Legend (ratings)	(III / 3) Δ Overvoltage category III / Pollution degree 3

Approvals per		UL 1059		
Use group	B	C	D	
Rated voltage	300 V	300 V	600 V	
Rated current	15 A	15 A	5 A	

Approvals per		CSA 22.2 No 158		
Use group	B	C	D	
Rated voltage	-	300 V	600 V	
Rated current	-	10 A	5 A	

Connection data

Clamping units	6
Total number of potentials	3
Number of levels	1

Connection 1	
Connection technology	CAGE CLAMP®
Actuation type	Operating tool
Connectable conductor materials	Copper
Solid conductor	0.08 ... 2.5 mm² / 28 ... 14 AWG
Fine-stranded conductor	0.08 ... 2.5 mm² / 28 ... 14 AWG
Strip length	8 ... 9 mm / 0.31 ... 0.35 inches
Pole number	3
Wiring direction	Side-entry wiring



Physical data		
Width		21 mm / 0.827 inches
Height		28 mm / 1.102 inches
Height from the surface		18.1 mm / 0.713 inches
Depth		22.5 mm / 0.886 inches
Module width		6 mm / 0.236 inches

Mechanical data		
Design		horizontal type
Mounting type		Snap-in foot
Marking level		Side marking

Material data		
Note (material data)		<a href="#">Information on material specifications can be found here</a>
Color		gray
Material group		I
Insulation material (main housing)		Polyamide (PA66)
Flammability class per UL94		V0
Fire load		0.147 MJ
Halogen-free		Yes
Weight		7.7 g

Commercial data		
Product Group		9 (Std Chassis Mt Blocks)
PU (SPU)		100 pcs
Packaging type		Box
Country of origin		DE
GTIN		4044918629263
Customs tariff number		85369010000

Product classification		
UNSPSC		39121410
eCl@ss 10.0		27-14-11-06
eCl@ss 9.0		27-14-11-06
ETIM 9.0		EC001284
ETIM 8.0		EC001284
ECCN		NO US CLASSIFICATION

Environmental Product Compliance		
RoHS Compliance Status		Compliant,No Exemption



Approvals / Certificates

General approvals



Approval	Standard	Certificate Name
CCA DEKRA Certification B.V.	EN 60998	NTR-NL 6509
CCA DEKRA Certification B.V.	EN 60998	2110272.02
CSA DEKRA Certification B.V.	C22.2	70010891
UR Underwriters Laboratories Inc.	UL 1059	E45172

Declarations of conformity and manufacturer's declarations

Approval	Standard	Certificate Name
EU-Declaration of Confor- mity WAGO GmbH & Co. KG	-	-
UK-Declaration of Confor- mity WAGO GmbH & Co. KG	-	-

Approvals for marine applications



Approval	Standard	Certificate Name
ABS American Bureau of Ship- ping	-	19-HG1869868-PDA
BV Bureau Veritas S.A.	EN 60947	07436/F0 BV
LR Lloyds Register	IEC 60998	LR22173030TA

Downloads

Environmental Product Compliance

Compliance Search

Environmental Product Compliance 261-153	
---	--

Documentation

Bid Text

261-153	19.02.2019	xml 3.09 KB	
261-153	14.06.2017	doc 24.50 KB	



CAD/CAE-Data	
CAD data	CAE data
2D/3D Models 261-153	EPLAN Data Portal 261-153
	WSCAD Universe 261-153
	ZUKEN Portal 261-153

1 Compatible Products
1.1 Optional Accessories
1.1.1 DIN-rail
1.1.1.1 Mounting accessories



[Item No.: 210-154](#)  
Aluminum carrier rail; 1000 mm long; 18 mm wide; 7 mm high; silver-colored

1.1.2 Ferrule			
1.1.2.1 Ferrule			
<a href="#">Item No.: 216-301</a> Ferrule; Sleeve for 0.25 mm² / AWG 24; insulated; electro-tin plated; yellow	<a href="#">Item No.: 216-302</a> Ferrule; Sleeve for 0.34 mm² / 22 AWG; insulated; electro-tin plated; light turquoise	<a href="#">Item No.: 216-201</a> Ferrule; Sleeve for 0.5 mm² / 20 AWG; insulated; electro-tin plated; electrolytic copper; acc. to DIN 46228, Part 4/09.90; white	<a href="#">Item No.: 216-101</a> Ferrule; Sleeve for 0.5 mm² / AWG 22; un-insulated; electro-tin plated; silver-colored
<a href="#">Item No.: 216-202</a> Ferrule; Sleeve for 0.75 mm² / 18 AWG; insulated; electro-tin plated; gray	<a href="#">Item No.: 216-102</a> Ferrule; Sleeve for 0.75 mm² / AWG 20; un-insulated; electro-tin plated; silver-colored	<a href="#">Item No.: 216-203</a> Ferrule; Sleeve for 1 mm² / AWG 18; insulated; electro-tin plated; red	<a href="#">Item No.: 216-103</a> Ferrule; Sleeve for 1 mm² / AWG 18; un-insulated; electro-tin plated
<a href="#">Item No.: 216-204</a> Ferrule; Sleeve for 1.5 mm² / AWG 16; insulated; electro-tin plated; black	<a href="#">Item No.: 216-104</a> Ferrule; Sleeve for 1.5 mm² / AWG 16; un-insulated; electro-tin plated; silver-colored	<a href="#">Item No.: 216-205</a> Ferrule; Sleeve for 2.08 mm² / AWG 14; insulated; electro-tin plated; yellow	<a href="#">Item No.: 216-206</a> Ferrule; Sleeve for 2.5 mm² / AWG 14; insulated; electro-tin plated; blue
<a href="#">Item No.: 216-106</a> Ferrule; Sleeve for 2.5 mm² / AWG 14; un-insulated; electro-tin plated; silver-colored			

1.1.3 Installation

1.1.3.1 Mounting accessories



**Item No.: 209-137**  
Mounting adapter; can be used as end stop; 6.5 mm wide; gray

**Item No.: 209-120**  
Mounting foot; can be snapped on terminal blocks with snap-in mounting foot; for mounting on relay-modules; 6.4 mm wide; gray

1.1.4 Jumper

1.1.4.1 Jumper



**Item No.: 261-402**  
Jumper; for conductor entry; 2-way; insulated; gray

1.1.5 Marking

1.1.5.1 Marking strip



**Item No.: 210-833**  
Marking strips; 25 m on roll; 6 mm wide; plain; Self-adhesive; white

1.1.6 Test and measurement

1.1.6.1 Testing accessories



**Item No.: 261-404**  
Test plug module; with locking latches; modular; for 2-conductor terminal blocks; for 261 Series; gray

**Item No.: 249-136**  
Test plug module; without locking device; modular; for 2-conductor terminal blocks; gray

1.1.7 Tool

1.1.7.1 Operating tool



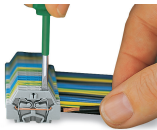
**Item No.: 210-658**  
Operating tool; Blade: 3.5 x 0.5 mm; with a partially insulated shaft; angled; short; multicoloured

**Item No.: 210-720**  
Operating tool; Blade: 3.5 x 0.5 mm; with a partially insulated shaft; multicoloured

**Item No.: 210-657**  
Operating tool; Blade: 3.5 x 0.5 mm; with a partially insulated shaft; short; multicoloured

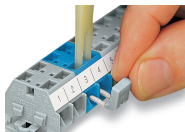
Installation Notes

Conductor termination

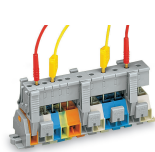


**CAGE CLAMP® connection**  
Inserting a conductor.  
With ferruled conductors, it is necessary to use a terminal block one size larger than the conductor's nominal cross-section.

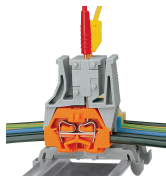
Commoning



Commoning with comb-style jumper bar.



Testing via test plug modules snapped onto a terminal strip – wired or unwired. As touch contact is made with the CAGE CLAMP® (spring steel) unit, this testing type is limited to maximum 0.5 A.  
  
Distance between locking devices must be approximately 35 ... 40 mm!



Testing after the conductors have been terminated.

Installation



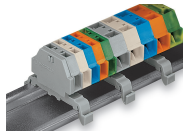
Mounting a terminal strip with snap-in feet into holes.



Mounting a terminal strip with snap-in feet onto aluminum rail.



Terminal strip with snap-in mounting feet  
Snapping a mounting foot (209-120).  
(Distance between mounting feet: approx. 25 ... 30 mm)



Terminal strip; with snap-in mounting feet; for DIN-35 rail



Terminal strip with snap-in mounting feet, for 0.6 ... 1.2 mm plate thickness, 3.5 mm mounting hole diameter (also for 210-154 Aluminum Rail or with 209-120 Mounting Foot for DIN-35 rail)

Marking



Marking with self-adhesive marking strips.



Marking by direct printing (upon request).