



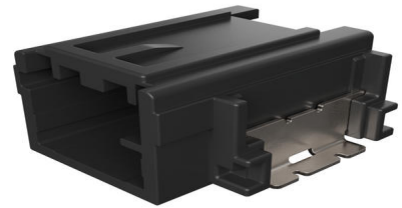
Part Number : [349128022](#)

Product Description : Mini50 Unsealed Header, UL 94 HB, Right-Angle, SMT, Single Row, 2 Circuits, Tin (Sn) Plating, Polarization Option C, Dark Gray, Tape and Reel

Series Number : 34912

Status : Active

Product Category : PCB Headers and Receptacles



Documents and Resources

Drawings

[349128022 sd.pdf](#)

[PK-31301-786-001.pdf](#)

3D Models and Design Files

[STEP AP242](#)

[SOLIDWORKS](#)

[Creo](#)

[Symbol and Footprint \(Multi-Format\)](#)

Specifications

[AS-34791-020-CH-001.pdf](#)

[2065230000-AS-000.pdf](#)

[AS-34791-020-001.pdf](#)

[AS-34791-020-CH-001.pdf](#)

[AS-34791-020-FR-001.pdf](#)

[2065230000-AS-KR-000.pdf](#)

[PS-34791-020-001.pdf](#)

[2065230000-TS-000.pdf](#)

[347910020-TS-000.pdf](#)

Product Environment Compliance

Compliance

GADSL/IMDS	Compliant with Exemption 44; 33
------------	---------------------------------

China RoHS	Not Relevant
EU ELV	Compliant per 2000/53/EC
Low-Halogen Status	Low-Halogen per IEC 61249-2-21
REACH SVHC	Not Contained per D(2025)7771-DC (04 Feb 2026)
EU RoHS	Compliant per EU 2015/863

Compliance Statements

- EU RoHS
- REACH SVHC
- Low-Halogen

Industry Documents

- IPC 1752A Class C
- IPC 1752A Class D
- Molex Product Compliance Declaration
- IEC-62474
- chemSHERPA (xml)

Substances of Interest

- PFAS

EU RoHS Certificate of Compliance

Additional Product Compliance Information

Part Details

General

Status	Active
Category	PCB Headers and Receptacles
Series	34912
Description	Mini50 Unsealed Header, UL 94 HB, Right-Angle, SMT, Single Row, 2 Circuits, Tin (Sn) Plating, Polarization Option C, Dark Gray, Tape and Reel
Application	Automotive, Power, Signal, Wire-to-Board
Component Type	PCB Header
Product Name	Mini50
UPC	889056525473

Electrical

Current - Maximum per Contact	4.0A (for reference only)
Voltage - Maximum	14V (typical operating)

Physical

Breakaway	No
Circuits (Loaded)	2
Circuits (maximum)	2
Color - Resin	Gray (Dark)
First Mate / Last Break	No
Glow-Wire Capable	No
Guide to Mating Part	No
Keying to Mating Part	Yes
Lock to Mating Part	Yes
Material - Metal	Brass
Material - Plating Mating	Tin
Material - Plating Termination	Tin
Material - Resin	SPS
Net Weight	1.200/g
Number of Rows	1
Orientation	Right Angle
Packaging Type	Embossed Tape on Reel
PCB Retention	Yes
Pitch - Mating Interface	2.00mm
Polarized to Mating Part	Yes
Polarized to PCB	Yes
Temperature Range - Operating	-40° to +100°C
Termination Interface Style	Surface Mount

Mates With / Use With

Mates with Part(s)

Description	Part Number
Mini50 Unsealed Receptacle Housings	<u>34791</u>

Mini50 Unsealed Dual Row Receptacles	<u>206523</u>
---	---------------

This document was generated on Apr 13, 2026