

NOTES:

1. MATERIALS AND FINISHES:
BODIES, COUPLING NUT, WASHERS, CAP & NUT - BRASS, NICKEL PLATING (0.000100/0.000250) THICK
CLAMP NUTS - BRASS, SILVER PLATING
CONTACT & OUTER CONTACT- BRASS, GOLD PLATING (0.00005/0.0001 THICK) OVER NICKEL
CONTACTS - BeCu, GOLD PLATING (0.00005/0.0001 THICK) OVER NICKEL
GASKETS - SILICONE RUBBER, RED
INSULATORS - PTFE, NATURAL
SPRING - BeCu, NICKEL PLATING (0.000100/0.000250) THICK
FERRULE - COPPER, NICKEL PLATING (0.000100/0.000250) THICK
SHRINK TUBE - POLYOLEFIN, WHITE

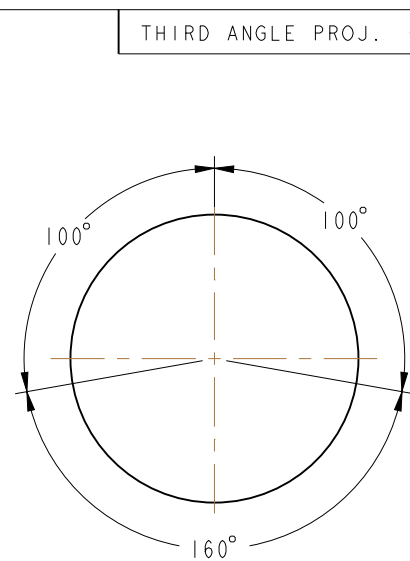
2. ELECTRICAL:
A. IMPEDANCE: NON-CONSTANT CAN BE USED WITH 50, 75 AND 93 OHM TRIAXIAL CABLES
B. FREQUENCY RANGE: DC - 500 MHz

3. ENVIRONMENTAL:
A. TEMPERATURE RANGE: -65°C TO $+165^{\circ}\text{C}$

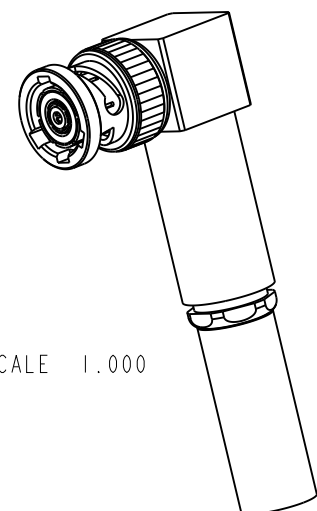
4. FOR ASSEMBLY AND STRIPPING INSTRUCTIONS SEE 9-9950-433

5. FERRULE TO BE CRIMPED WITH A 0.178 [4.52] HEX DIE CONTACT TO BE SOLDERED.

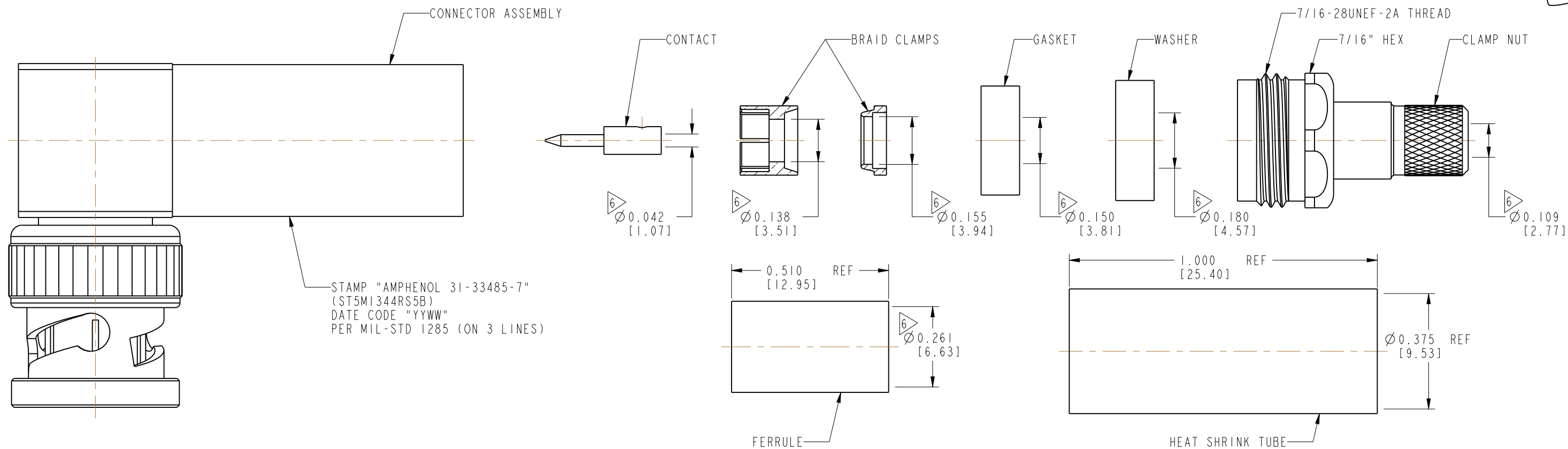
6 SHOWS CABLE ENTRY DIMENSIONS



POLARITY



SCALE 1.000



CUSTOMER OUTLINE DRAWING

ALL OTHER SHEETS ARE FOR INTERNAL USE ONLY

UNLESS OTHERWISE SPECIFIED, DIMENSIONS ARE IN INCHES AND TOLERANCES ARE: 2 PLACE DECIMAL 3 PLACE DECIMAL ANGLES ±.015 (0,381 mm) ±.005 (0,127 mm) ± 1°		MATERIAL SEE NOTES	DRAWN M.SANCA	DATE 13-Sep-11	TITLE BNC R/A TRIAX PLUG FOR BOEING ST5MI323		Amphenol RF www.amphenolrf.com	
NOTICE - These drawings, specifications, or other data (1) are, and remain the property of Amphenol corp. (2) must be returned upon request; and (3) are confidential and not to be disclosed to any person other than those to whom they are given by Amphenol Corp. the furnishing of these drawings, specifications, or other data by Amphenol Corp., or to any other person to anyone for any purpose is not to be regarded by implication or otherwise in any manner licensing, granting rights to permitting such holder or any other person to manufacture, use or sell any product, process or design, patented or otherwise, that may in any way be related to or disclosed by said drawings, specifications, or other data.			ENGINEER K.CAPOZZI	DATE 13-Sep-11				
		REFERENCE McDONNELL-DOUGLAS SPEC. ST5MI344RS5B	APPROVED K.CAPOZZI	DATE 13-Mar-17	SCALE: 3.0:1.0	SHEET 2 OF 2	DRAWING NO.31-33485-7	
		CONFIGURATION LEVEL: In Work	CAD FILE	DWG SIZE B	REV AA	ITEM NO.31-33485-7		
FINISH						PART NO.31-33485-7		