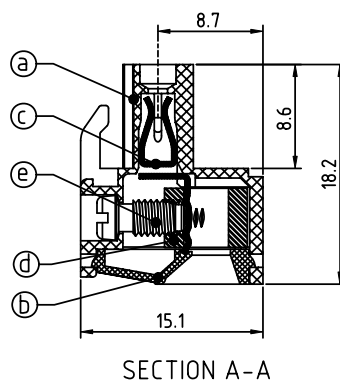
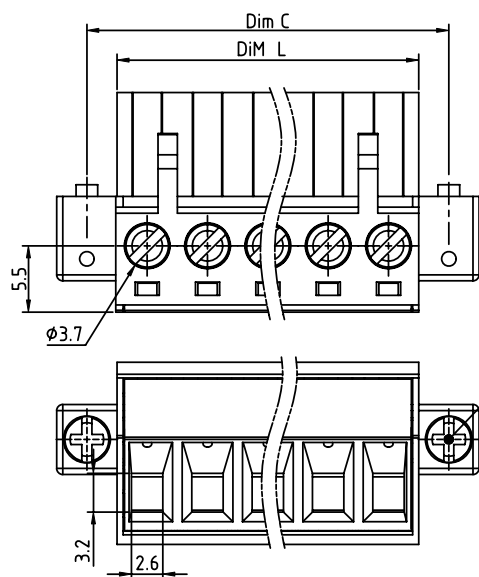
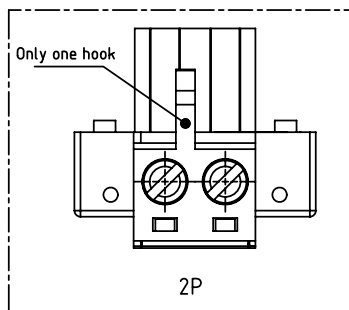
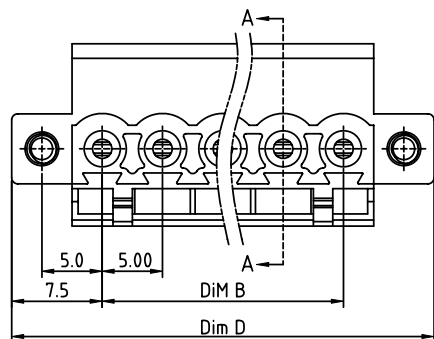


PRODUCT NUMBER	PITCH
TJxx71x700J0G	5.00 mm



PART NO.: TJ xx 71x 7 00J0 G

N=NUMBER OF POLES

Dim L=N×5.00
Dim B=(N-1)×5.00
Dim C=(N+1)×5.00
Dim D=(N+2)×5.00

POLES	Tolerance
2P-5P	±0.15
6P-10P	±0.20
11P-15P	±0.25
16P-20P	±0.30
21P-24P	±0.40

 No. of poles
 02 2 poles
 03 3 poles
 ...
 24 24 poles


 Color
 0 Black (RAL9005)
 2 Red (RAL3001/D)
 3 Orange(RAL2011/P)
 4 Yellow(RAL1018/A)
 5 Green(RAL6018/T)
 6 Blue (RAL5015/A)
 8 Grey(RAL7035/D)
 9 White(RAL1102)
 C Green(RAL6018/U)

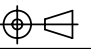
 RoHS compliant
 (lead<4%)
 In copper Alloy

Material

- Item(a) Terminal body:Thermoplastic (UL94V-0)
- Item(b) Terminal cover:Thermoplastic (UL94V-0)
- Item(c) Female contact:High conductivity copper, Tin plated
- Item(d) Clamp: Brass,Ni plated
- Item(e) Terminal screw:Steel Zinc plating "- " slot type
- Item(f) With flange screw:Steel Zinc plating M2.5"/+/- " slot type

Electrical

- Voltage rating:300V
- Current rating:20A
- Solid wire(AWG):12-24
- Stranded wire(AWG):12-24
- Torque(Lb-In): 5
- Screw: M3
- Wire strip length: 7-8mm
- Withstanding Voltage: 1.6KV
- Operating temperature: -40°C to +115°C
- Safety Approval: 

mat'l. code				surface ASME Y14.5✓	tolerance ASME Y14.5	projection 	product family TERMINAL BLOCK
ltr	ecn	no	dr	date	tolerances unless otherwise specified	MM	title TERMINAL BLOCK
					angles X°±1°		scale PLUGGABLE PLUG, WITH PLANGE, CONTACT ON UP SIDE
					dr HANKE FENG 031514		dwg no TJxx71x700J0G
					enr HANKE FENG 031514		sheet 1 of 1 size A4
					chr SHI JUN 031514		type CUSTOMER Drawing
					appd SHI JUN 031514		
sheet index	revision	sheet	A	1			