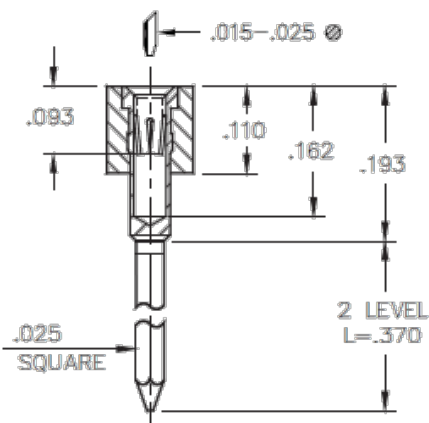




PRODUCT NUMBER: 522-13-022-05-001002

www.mill-max.com
DATA SHEET

SERIES 522 (2 Level Wrapost)



General Info

Description ¹ :	2 Level Wrapost
Type:	PGA
Category:	Machined Pin Socket
Mounting Style:	Through Hole Solder Mount
# Pins:	22
ECCN:	Contact Factory
HTSUS:	8536.90.4040
Product Lifecycle:	Active
Country Of Origin:	USA

522-13-022-05-001002- SPECIFICATIONS

Environmental Specs

Temperature Range ² :	-55/+125° C
RoHS ³ :	Yes
Moisture Sensitivity Level (MSL):	1 (Unlimited)
REACH Status:	REACH Unaffected

Materials

Loose Pin/Receptacle # (Material):	0089 (Brass Alloy)
Shell Plating:	10 μ" Gold over 100 μ" Nickel
Inner Contact #:	35
# Contact Fingers:	6
Inner Contact Material:	Beryllium Copper
Inner Contact Plating:	30 μ" Gold over 50 μ" Nickel
Insulator Material:	High Temp Thermoplastic

NOTES:

1. Standard Tolerances:

Assembly tolerance: $\pm .010$ " (.25mm)

Insulator length: $\pm .005$ " (.13mm)

Insulator width: $\pm .005$ " (.13mm)

Insulator height: $\pm .005$ " (.13mm)

Pin Length: $\pm .005$ " (.13mm)

Pin Diameter: $\pm .002$ " (.051mm)

Pin Angle: $\pm 2^\circ$

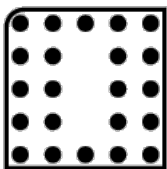
Co-planarity of SMT connectors: .005" (.13mm) up to 1" (25.4mm) in connector length

Insulator Flatness: .005" (.13mm) up to 1" (25.4mm) in connector length

2. Per IEC 60512-11-(4,-9,-10,-12)

3. Mill-Max products labeled with the RoHS symbol are compliant with all three ROHS Directives. All of our products previously described as RoHS (2002/95/EC) and RoHS-2 (2011/65/EC) are also compliant with RoHS-3 (2015/863/EU).

ADDITIONAL PARTS, PACKAGING, & ASSEMBLY INFO



022-05-001

ADDITIONAL NOTES AND SPECIFICATIONS

In the interest of improved design, quality and performance, Mill-Max reserves the right to make changes in its specifications without prior notice. Specifications and tolerances are provided wherever possible. The tolerance on dimensions of critical to function features is typically held tighter than the stated standard tolerances, such as press-fits, holes and lengths affecting the coplanarity of SMT products. Due to the wide variety of interconnects Mill-Max offers, the specific tolerances vary from product to product. If you need information regarding the tolerance of a particular part, please contact Technical Services.

RELATED LINKS AND DOCUMENTS

- Environmental Compliance: <https://www.mill-max.com/rohs>