

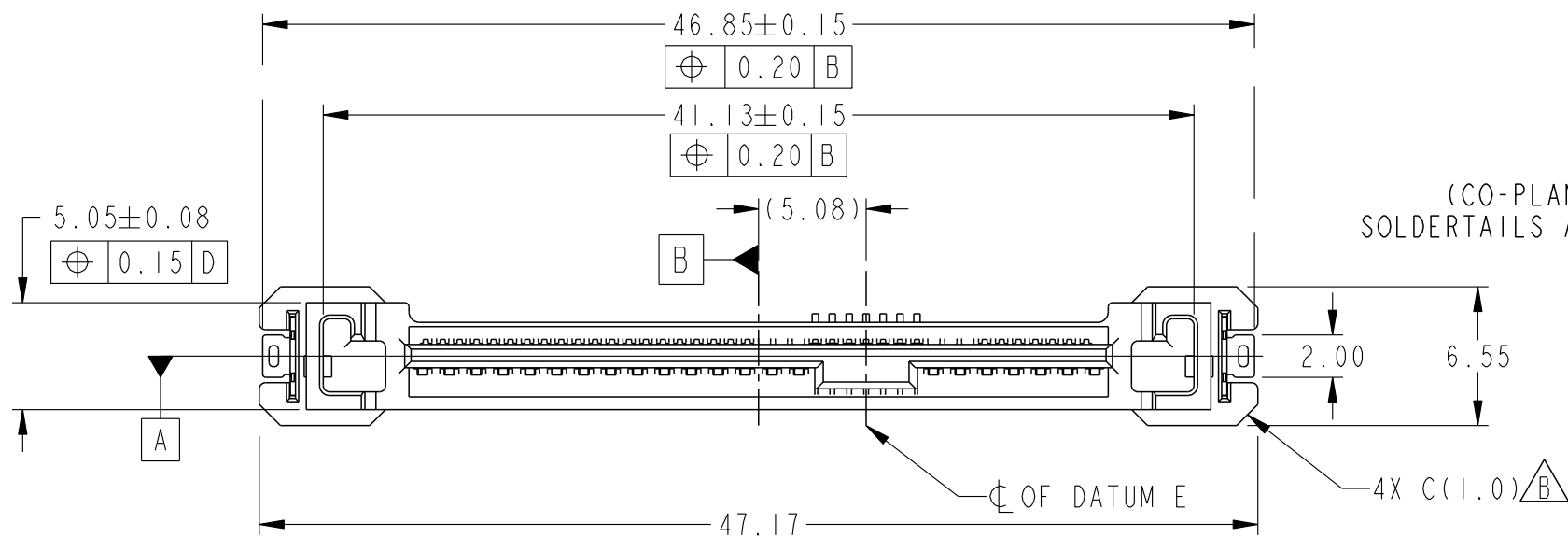
PRODUCT NUMBER	REMARK	
10126428-001C-TRLF	OBSOLETE	
10126428-002C-TRLF		

A

B

C

D

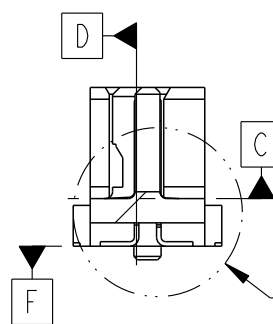
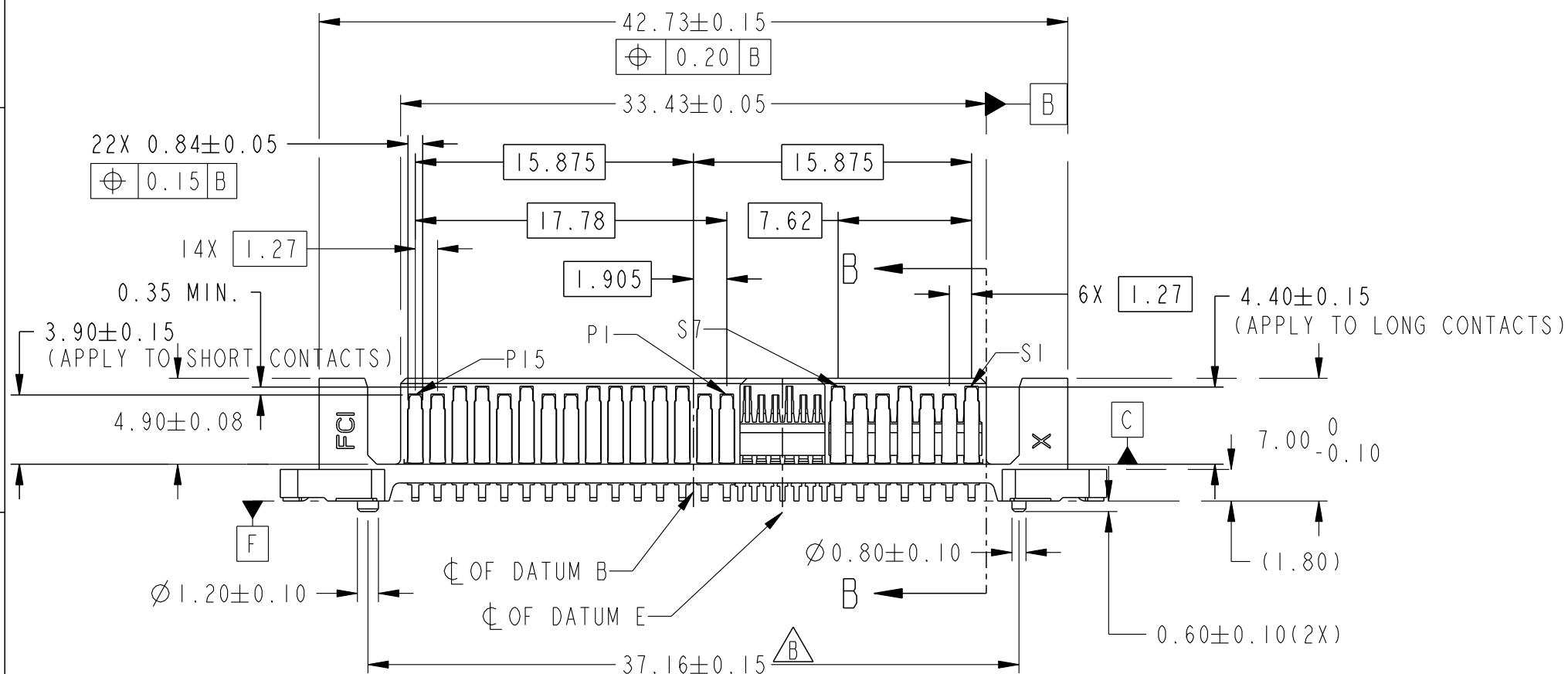
  
0.10(CO-PLANARITY FOR ALL  
SOLDER TAILS AND HOLD DOWN)

(S1~S7; P1~P15)

DETAIL A  
SCALE 8:1

SEE DETAIL A

SECTION B-B



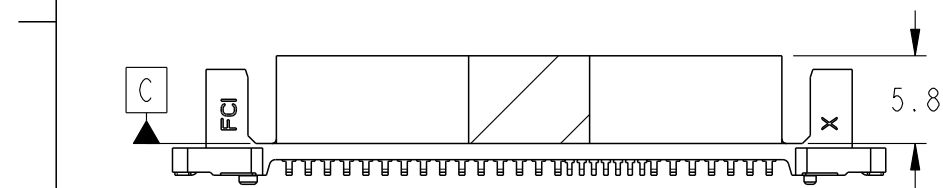
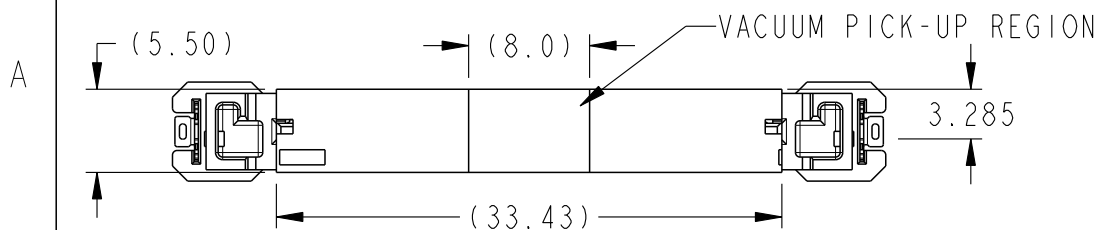
spec ref	-	dr	Jeffrey Lim	2014/08/28	projection	MM	size	A3	scale	3:1
tolerance std	-	eng	Jeffrey Lim	2016/02/01			ecn no	ELX-S-23180-1		
ASME Y14.5	TOLERANCES UNLESS OTHERWISE SPECIFIED	chr	-	-			rel level	Released		
surface	✓	appr	Koon-Poh Tay	2016/03/09	product family	-	dwg no	10126428	rev	B
ASME Y14.5	linear	angular	0°	±2°	www.fci.com	cat. no.	-	Product - Customer Drw	sheet 1 of 3	



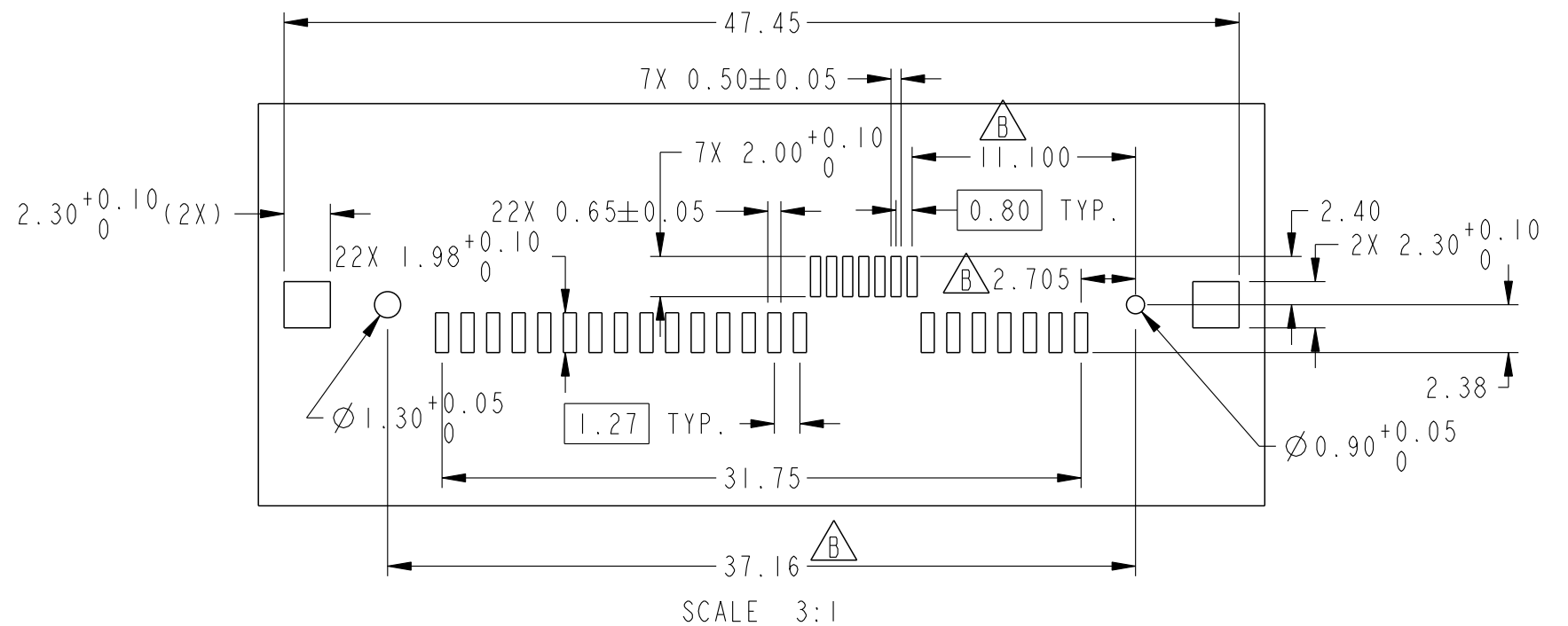


Copyright FCI.

PRODUCT NUMBER	PACKAGING	REMARK
10126428-001C-TRLF	TAPE & REEL	OBSOLETE
10126428-002C-TRLF		



SCALE 2:1  
WITH PICK-UP CAP ATTACHED



RECOMMENDED PCB LAYOUT

NOTES:

1. MATERIAL:  
HOUSING & CAP: HIGH TEMPERATURE THERMOPLASTIC, BALCK, UL94V-0  
CONTACT & HOLD DOWN: COPPER ALLOY
2. FINISH:  
CONTACT: 1.27µm MIN. Ni UNDERPLATE OVERALL,  
1.91µm MIN. 100% MATTE Sn (LEAD-FREE) ON SOLDER TAIL,  
0.76µm MIN. Au ON CONTACT AREA  
HOLD DOWN: 1.91µm MIN. 100% MATTE Sn (LEAD-FREE) OVER 1.27µm MIN. Ni UNDERPLATE OVERALL
3. PRODUCT SPEC.: GS-12-1120
4. PACKAGING SPEC.: GS-14-2307(TAPE & REEL)
5. THIS PRODUCT MEETS EUROPEAN UNION DIRECTIVES AND OTHER COUNTRY REGULATIONS AS DESCRIBED IN GS-47-0004
6. THIS PRODUCT IS COMPLY WITH SFF-8680 SPECIFICATION
7. THE HOUSING WILL WITHSTAND EXPOSURE TO 260°C PEAK TEMPERATURE FOR 10 SECONDS IN A CONVECTION, INFRA-RED OR VAPOR PHASE REFLOW OVEN
8. A SYMBOL WILL BE NEXT TO ANY DIMENSION, VIEW OR NOTE WHICH HAS BEEN MODIFIED WITH THE CURRENT DRAWING REVISION.

spec ref -				dr Jeffrey Lim		2014/08/28		projection		MM		size A3		scale 2:1			
tolerance std -				eng Jeffrey Lim		2016/02/01						ecn no ELX-S-23180-1					
ASME Y14.5				chr -		-											
				appr Koon-Poh Tay		2016/03/09		product family -				rel level Released					
surface		linear		0.X		±0.25				title 12G SAS PLUG VERTICAL SMT ASSY				dwg no 10126428		rev B	
				0.XX		±0.13											
				0.XXX		±0.050											
ASME Y14.5		angular		0°		±2°		www.fci.com		cat. no. -		Product - Customer Drw				sheet 3 of 3	