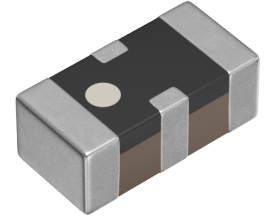


MEM1608D201RT001



Applications	Commercial Grade
Feature	For Signal Line
Series	MEM
Status	Production
Brand	TDK



Size	
Length(L)	1.60mm ±0.10mm
Width(W)	0.80mm ±0.10mm
Thickness(T)	0.60mm ±0.10mm

Electrical Characteristics	
Insertion Loss [Typ.]	15dB (700MHz to 1.5GHz)
Cut-Off Frequency [Typ.]	200MHz
Rated Voltage [Max.]	6.3V
Rated Current [Max.]	200mA
DC Resistance (Max.)	
Rated Capacitance [Typ.]	30pF

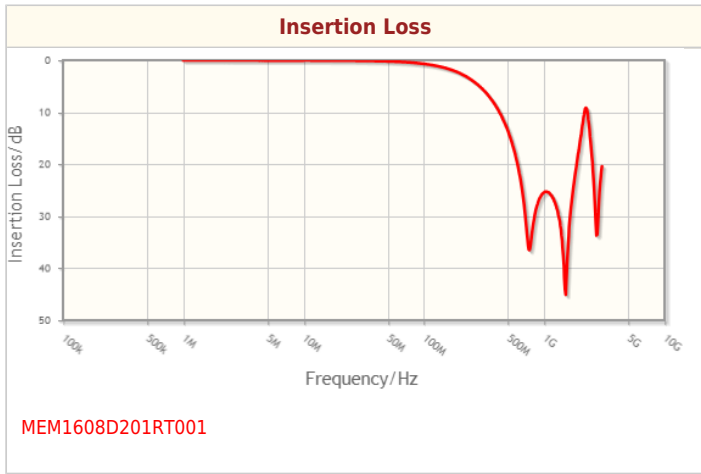
Other	
Circuit Type	L Type
Transmission Line	Single-ended
Operating Temp. Range	-40 to 85°C
Soldering Method	Reflow Iron Soldering
AEC-Q200	NO
Packing	Punched (Paper)Taping [180mm Reel]
Package Quantity	4000pcs
Weight	0.0035g

! Images are for reference only and show exemplary products.
! This PDF document was created based on the data listed on the TDK Corporation website.
! All specifications are subject to change without notice.

MEM1608D201RT001



Characteristic Graphs(This is reference data, and does not guarantee the products characteristics.)

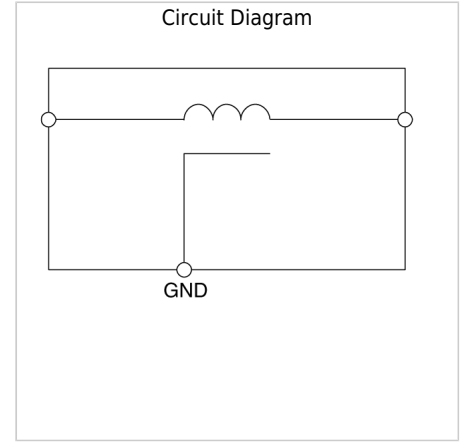
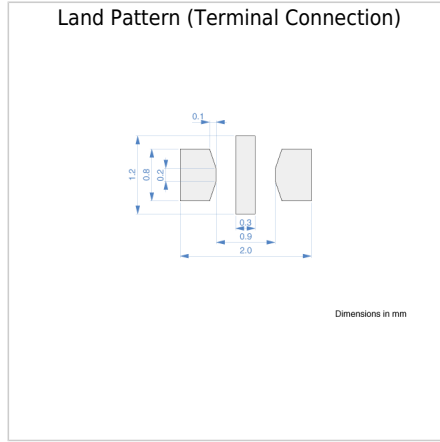
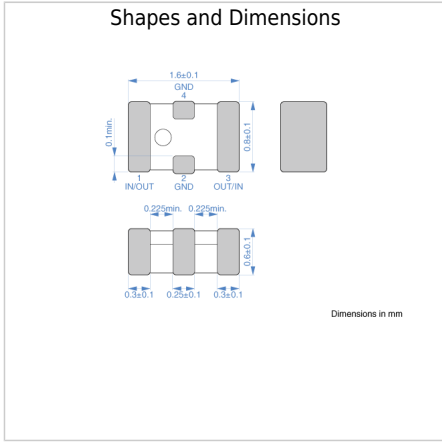


! Images are for reference only and show exemplary products.
! This PDF document was created based on the data listed on the TDK Corporation website.
! All specifications are subject to change without notice.

MEM1608D201RT001



Associated Images



! Images are for reference only and show exemplary products.
 ! This PDF document was created based on the data listed on the TDK Corporation website.
 ! All specifications are subject to change without notice.