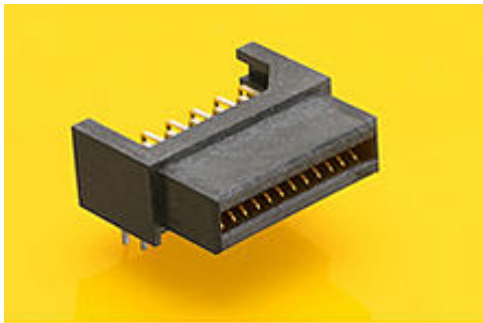




Part Number : [459840382](#)
Product Description : EXTreme LPHPower
Receptacle Header, Right-Angle, 40 Signal Contacts,
Select Gold (Au) Plating, for 2.36mm Thick PC Board,
with Press-fit Plastic Pegs
Series Number : 45984
Status : Active
Product Category : Board-to-Board Connectors



Documents & Resources

Drawings

[459840382 sd.pdf](#)
[PK-45984-002-001.pdf](#)

3D Models and Design Files


[STEP AP242](#)
[SOLIDWORKS](#)
[Creo](#)
[Symbol and Footprint \(Multi-Format\)](#)
[SYM-45984-0381-001.zip](#)

Specifications

[PS-45984-001-001.pdf](#)

Product Environment Compliance

Compliance

| | |
|--------------------|--|
| GADSL/IMDS | Compliant with Exemption 44; 34; 33 |
| China RoHS |  per SJ/T 11365-2006 |
| EU ELV | Not Relevant |
| Low-Halogen Status | Low-Halogen per IEC 61249-2-21 |
| REACH SVHC | Not Contained per D(2025)4165-DC (25 June 2025) |
| EU RoHS | Compliant per EU 2015/863 |

Compliance Statements

- EU RoHS
- REACH SVHC
- Low-Halogen

Industry Documents

- IPC 1752A Class C
- IPC 1752A Class D
- Molex Product Compliance Declaration
- IEC-62474
- chemSHERPA (xml)

Substances of Interest

- PFAS

EU RoHS Certificate of Compliance

Additional Product Compliance Information

Part Details

General

| | |
|----------------|---|
| Status | Active |
| Category | Board-to-Board Connectors |
| Series | 45984 |
| Description | EXTreme LPHPower Receptacle Header, Right-Angle, 40 Signal Contacts, Select Gold (Au) Plating, for 2.36mm Thick PC Board, with Press-fit Plastic Pegs |
| Application | Board-to-Board, Signal |
| Component Type | PCB Receptacle |
| Product Name | EXTreme LPHPower |
| UPC | 883906344795 |

Agency

| | |
|-----|---------|
| CSA | LR19980 |
| UL | E29179 |

Electrical

| | |
|-------------------------------|------|
| Current - Maximum per Contact | 1.0A |
| Grounding to PCB | No |

| | |
|-------------------|-----------------|
| Voltage - Maximum | 30V DC (Signal) |
|-------------------|-----------------|

Physical

| | |
|--------------------------------|--------------------------------|
| Circuits (Loaded) | 40 |
| Circuits (maximum) | 40 |
| Color - Resin | Black |
| Durability (mating cycles max) | 250 |
| Flammability | 94V-0 |
| Glow-Wire Capable | No |
| Guide to Mating Part | No |
| Keying to Mating Part | None |
| Lock to Mating Part | None |
| Material - Metal | High Performance Alloy (HPA) |
| Material - Plating Mating | Gold |
| Material - Plating Termination | Tin |
| Material - Resin | High Temperature Thermoplastic |
| Net Weight | 3.225/g |
| Number of Rows | 2 |
| Orientation | Right Angle |
| Packaging Type | Tray |
| PCB Locator | No |
| PCB Retention | None |
| PCB Thickness - Recommended | 2.36mm |
| PC Tail Length | 3.60mm |
| Pitch - Mating Interface | 1.27mm |
| Pitch - Termination Interface | 1.27mm |
| Plating min - Mating | 0.762µm |
| Plating min - Termination | 3.810µm |
| Polarized to Mating Part | Yes |
| Polarized to PCB | Yes |
| (p)ower-(s)ignal Configuration | 40s - 0p |
| Stackable | No |
| Temperature Range - Operating | -40° to +105°C |
| Termination Interface Style | Through Hole |

Solder Process Data

| | |
|------------------------------|------|
| Max-Duration | 20 |
| Lead-Free Process Capability | WAVE |
| Max-Cycle | 3 |
| Max-Temp | 260 |

Mates With / Use With

Mates with Part(s)

| | |
|------------------------------------|------------------|
| Description | Part Number |
| EXTreme LPHPower Right-Angle Plugs | <u>45985</u> |
| Mates With | 1.57mm Card Edge |

This document was generated on Sep 24, 2025