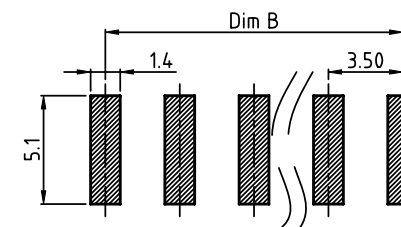
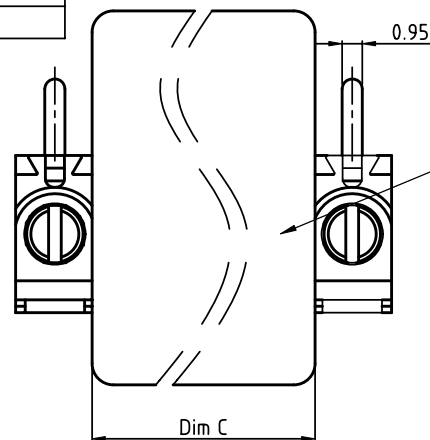
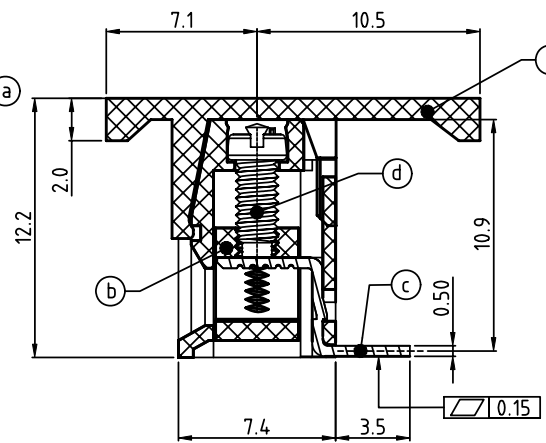
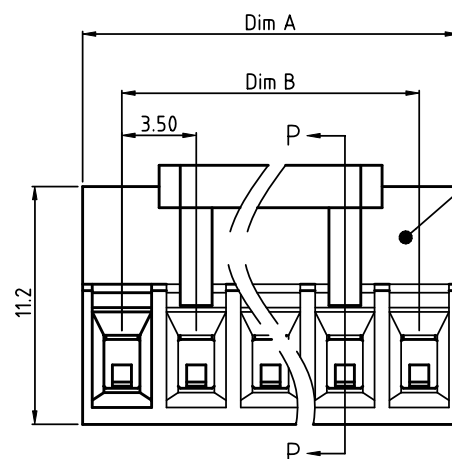


PRODUCT NUMBER	PITCH
TZxx2103B0J0G	3.50 mm



RECOMMENDED P.C.B LAYOUT
TOP VIEW



Material:

- Item ① Terminal housing: High temp. polyamide (UL94V-0)
- Item ② Clamp: Brass ,Ni plated
- Item ③ Solder pin: Brass ,Tin plated
- Item ④ Terminal screw: Steel Zinc plating "-" slot type
- Item ⑤ Terminal Cover: High temp. polyamide (UL94V-0)

Electrical cULus

- Voltage rating: 300VAC
- Current rating: 10A
- Wire range:
- Solid wire(AWG): 16-30
- Stranded wire(AWG): 16-30
- Torque: 1.7 Lb-In
- Screw: M2.0
- Wire strip length: 4-5mm
- Withstanding Voltage: 1.6KV
- Operating temperature: -40°C to +115°C
- Reflow Soldering temperature: 260°C/10 Sec Max

Cover

Poles	Dim C
2P	7.00
3P	10.50

DIMENSION

Dim A	NX3.50+0.20
Dim B	(N-1)X3.50

N=NUMBER OF POLES

Poles	Tolerance
2p-6p	±0.15
7p-12p	±0.25
13p-16p	±0.30

PART NO.: TZ xx 21 0 3 B0J0 G

Solid block
No. of poles
02 2 poles
03 3 poles
...
16 16 poles

Color
0 Black (RAL9005)

RoHS compliant
(lead<4%)
In copper Alloy

SECTION P-P

mat'l. code				surface ASME Y14.5	tolerance ASME Y14.5	projection	product family			
ltr	ecn	no	dr	date	tolerances unless otherwise specified		TERMINAL BLOCK			
					angles	X.±0.5	TERMINAL BLOCK			
					X.X±0.3					
					X*±1"	X.XX±0.1	RISING CLAMP, 180D WIRE INLET, SMT TYPE			
					dr	EVIN ZHONG 041614	FCI			
					enrg	EVIN ZHONG 041614				
					chr	HANKE FENG 041614	type			
					appd	SHI JUN 041614				
sheet index	revision	A		1			CUSTOMER Drawing			