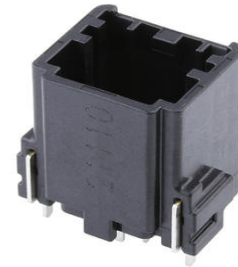


Part Number : [1600641103](#)
Series Number : 160064
Status : Active - Proprietary
Product Category : PCB Headers and Receptacles



Drawings


[1600641103_sd.pdf](#)
[PK-31302-336-001.pdf](#)
[1600641103_stp.zip](#)

Specifications

[PS-34861-001-001.pdf](#)

Product Environment Compliance

Compliance

GADSL/IMDS	Compliant with Exemption 44; 34; 33
China RoHS	 per SJ/T 11365-2006
EU ELV	Compliant per 2000/53/EC
Low-Halogen Status	Low-Halogen per IEC 61249-2-21
REACH SVHC	Not Contained per D(2025)7771-DC (04 Feb 2026)
EU RoHS	Compliant per EU 2015/863

Compliance Statements

- EU RoHS
- REACH SVHC
- Low-Halogen

Industry Documents

- IPC 1752A Class C
- IPC 1752A Class D
- Molex Product Compliance Declaration
- IEC-62474
- chemSHERPA (xml)

Substances of Interest

- PFAS

EU RoHS Certificate of Compliance

Additional Product Compliance Information

Part Details

General

Status	Active - Proprietary
Category	PCB Headers and Receptacles
Series	160064
Description	HSAutoLink II Unsealed Header, Vertical, 6 Circuits, Key A, Black
Application	Automotive, Signal, Wire-to-Board
Comments	Higher current capability depending of the connector loading, please contact Molex for further technical details.
Component Type	PCB Header
Product Name	HSAutoLink II
UPC	889056197496

Electrical

Current - Maximum per Contact	1.5A
Voltage - Maximum	36V

Physical

Breakaway	No
Circuits (Loaded)	6
Circuits (maximum)	6
Color - Resin	Black
Durability (mating cycles max)	25
First Mate / Last Break	No
Glow-Wire Capable	No
Guide to Mating Part	No
Keying to Mating Part	Yes
Lock to Mating Part	Yes

Material - Metal	Copper Alloy
Material - Plating Mating	Gold
Material - Plating Termination	Tin
Material - Resin	High Temperature Thermoplastic
Net Weight	3.000/g
Number of Rows	2
Orientation	Vertical
Packaging Type	Embossed Tape on Reel
PCB Retention	Yes
PCB Thickness - Recommended	1.60mm
Pitch - Mating Interface	1.27mm
Pitch - Termination Interface	1.27mm
Plating min - Mating	0.406µm
Plating min - Termination	2.500µm
Polarized to Mating Part	Yes
Polarized to PCB	Yes
Stackable	No
Temperature Range - Operating	-40° to +105°C
Termination Interface Style	Through Hole

This document was generated on Apr 23, 2026